

<b>IH 43/94: BECHER ST TO MITCHELL INTERCHANGE (MILWAUKEE COUNTY)</b> <b>NIGHTTIME 2 LANE CLOSURE</b> <b>NO DIVERSION ROUTE (MAX QUEUE METHOD)</b>	<b>OCTOBER</b>
	Analyzed for 2009 Construction Season

**SUMMARY OF TRAFFIC MODEL OUTPUT**

MON-THUR      WESTBOUND DIRECTION

TIME OF DAY	FLOWS AND CAPACITY IN VEH/HR						AVERAGE SPEEDS IN MPH				
	MAIN ROUTE		SITE CAPA CITY	FLOW		AV.DEL PER VEH (MINS)	AVERAGE QUEUE (VEH)	MAIN ROUTE		SITE	
	DEMAND FLOW	PCT HEAVY		MAIN ROUTE	'DIVER TED'			WITHOUT WORK ZONE	WITH WORK ZONE		
MID-1 AM	591	0.0	1500	591	0	0.54	0	70.0	59.2	43.2	
1-2 AM	435	0.0	1500	435	0	0.53	0	70.2	59.7	43.8	
2-3 AM	372	0.0	1500	372	0	0.52	0	70.2	59.8	44.0	
3-4 AM	385	0.0	1500	385	0	0.52	0	70.2	59.8	44.0	
4-5 AM	738	0.0	1500	738	0	0.56	0	69.8	58.9	42.6	
5-6 AM	1721	0.0	OFF	1721	0	0.00	0	68.6	68.6	68.6	
6-7 AM	2945	0.0	OFF	2945	0	0.00	0	67.1	67.1	67.1	
7-8 AM	3381	0.0	OFF	3381	0	0.00	0	66.5	66.5	66.5	
8-9 AM	2912	0.0	OFF	2912	0	0.00	0	67.1	67.1	67.1	
9-10 AM	2638	0.0	OFF	2638	0	0.00	0	67.4	67.4	67.4	
10-11 AM	2649	0.0	OFF	2649	0	0.00	0	67.4	67.4	67.4	
11AM-NOON	2950	0.0	OFF	2950	0	0.00	0	67.1	67.1	67.1	
NOON-1PM	3238	0.0	OFF	3238	0	0.00	0	66.7	66.7	66.7	
1-2 PM	3435	0.0	OFF	3435	0	0.00	0	66.4	66.4	66.4	
2-3 PM	4343	0.0	OFF	4343	0	0.00	0	61.2	61.2	61.2	
3-4 PM	5297	0.0	OFF	5297	0	0.00	0	54.6	54.6	54.6	
4-5 PM	5621	0.0	OFF	5621	0	0.00	0	52.5	52.5	52.5	
5-6 PM	5635	0.0	OFF	5635	0	0.00	0	52.4	52.4	52.4	
6-7 PM	4085	0.0	OFF	4085	0	0.00	0	63.0	63.0	63.0	
7-8 PM	2725	0.0	1499	1580	1145	15.02+	379	67.4	11.6	36.3	
8-9 PM	2171	0.0	1499	1859	312	13.12+	334	68.1	12.9	30.8	
9-10 PM	1888	0.0	1499	1482	406	16.28+	398	68.4	10.9	30.8	
10-11 PM	1409	0.0	1499	1358	51	14.83+	362	69.0	11.7	30.8	
11PM-MID	937	0.0	1499	937	0	2.33	84	69.6	39.2	39.4	

"OFF" INDICATES NO ROAD WORK (ALL LANES OPEN TO TRAFFIC)

+ INDICATES QUEUEING EXCEEDS USER-SPECIFIED MAXIMUM LIMIT

*----- SITE BREAKDOWN DELAYS -----*	
BREAKDOWN DURATION (MINS)	0
RANGE OF QUEUE DELAY - MIN (VEH-H) MAX	0.0
AV BREAKDOWNS PER DAY	0.00
AV QUEUE DELAY/DAY (VEH-H)	0.0
AV TOTAL DELAY/DAY (VEH-H)	0.0

*----- SITE ACCIDENT DELAYS -----*	
BREAKDOWN DURATION (MINS)	0
RANGE OF QUEUE DELAY - MIN (VEH-H) MAX	0
AV BREAKDOWNS PER DAY	0
AV QUEUE DELAY/DAY (VEH-H)	0
AV TOTAL DELAY/DAY (VEH-H)	0

AVERAGE ACCIDENT NUMBERS (PIA/DAY)	
MAIN ROUTE WITHOUT WORKS	0.0348
MAIN ROUTE WITH WORKS	0.0331
'DIVERSION'	0.0025
PIA: Personal Injury Accidents	
IMPACTS ON ROAD USERS	
ROAD USER COSTS PER DAY	\$28,716
CONGESTED HOURS PER DAY*	4

\*Delays Exceeding User-Specified Maximum

**IH 43/94: BECHER ST TO MITCHELL INTERCHANGE (MILWAUKEE COUNTY)**  
**NIGHTTIME 2 LANE CLOSURE**  
**NO DIVERSION ROUTE (MAX QUEUE METHOD)**

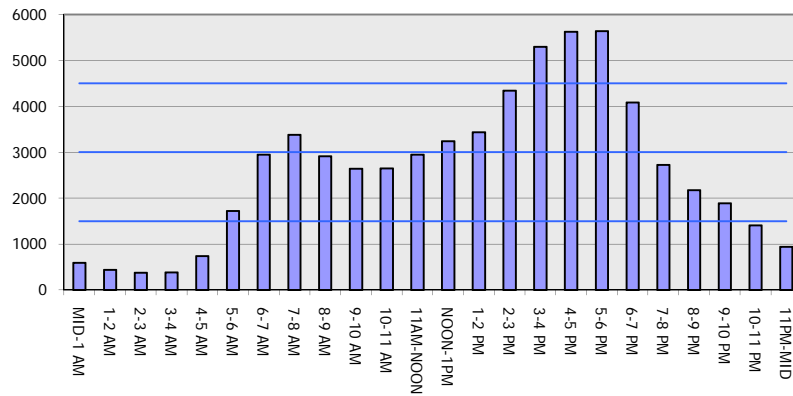
**OCTOBER**

Analyzed for 2009  
 Construction Season

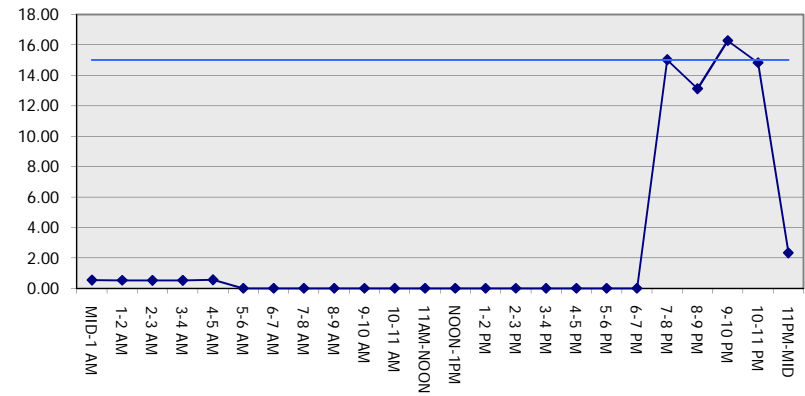
**GRAPHICAL REPRESENTATION OF TRAFFIC MODEL INPUT AND OUTPUT**

**MON-THUR WESTBOUND DIRECTION**

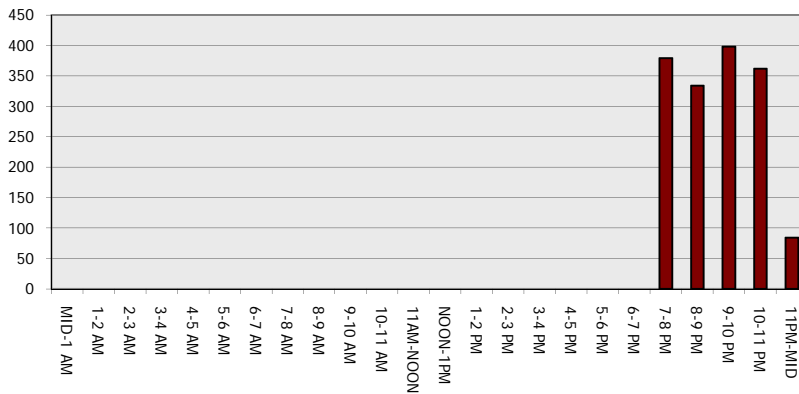
**Main Route - Traffic Demand (Vehicles Per Hour)**



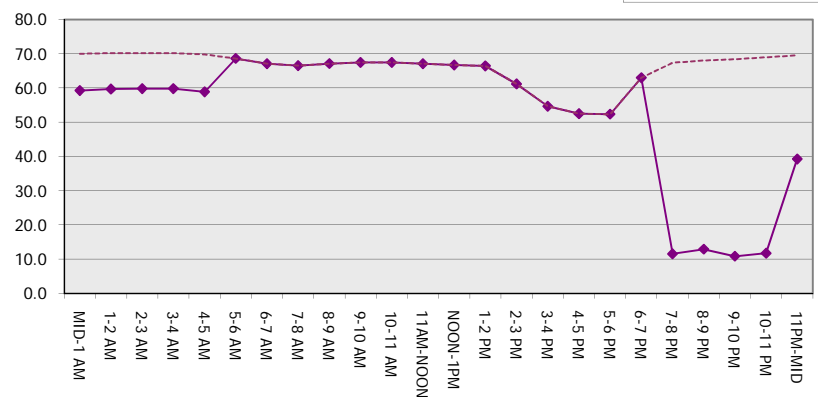
**Main Route Average Delay Per Vehicle (Minutes)**



**Main Route - Average Queue Length (Vehicles)**



**Main Route - Average Speed (MPH)**



<b>IH 43/94: BECHER ST TO MITCHELL INTERCHANGE (MILWAUKEE COUNTY)</b> <b>NIGHTTIME 2 LANE CLOSURE</b> <b>NO DIVERSION ROUTE (MAX QUEUE METHOD)</b>	<b>OCTOBER</b>
	Analyzed for 2009 Construction Season

**SUMMARY OF TRAFFIC MODEL OUTPUT**

MON-THUR                      EASTBOUND DIRECTION

TIME OF DAY	FLOWS AND CAPACITY IN VEH/HR							AVERAGE SPEEDS IN MPH		
	MAIN ROUTE		SITE CAPA CITY	FLOW		AV.DEL PER VEH (MINS)	AVERAGE QUEUE (VEH)	MAIN ROUTE		SITE
	DEMAND FLOW	PCT HEAVY		MAIN ROUTE	'DIVER TED'			WITHOUT WORK ZONE	WITH WORK ZONE	
MID-1 AM	580	0.0	1500	580	0	0.54	0	70.0	59.3	43.2
1-2 AM	310	0.0	1500	310	0	0.51	0	70.2	59.9	44.2
2-3 AM	291	0.0	1500	291	0	0.51	0	70.2	60.0	44.3
3-4 AM	318	0.0	1500	318	0	0.51	0	70.2	59.9	44.2
4-5 AM	568	0.0	1500	568	0	0.54	0	70.0	59.3	43.2
5-6 AM	1946	0.0	OFF	1946	0	0.00	0	68.3	68.3	68.3
6-7 AM	4650	0.0	OFF	4650	0	0.00	0	59.1	59.1	59.1
7-8 AM	5705	0.0	OFF	5705	0	0.00	0	51.9	51.9	51.9
8-9 AM	4654	0.0	OFF	4654	0	0.00	0	59.1	59.1	59.1
9-10 AM	3198	0.0	OFF	3198	0	0.00	0	66.8	66.8	66.8
10-11 AM	2820	0.0	OFF	2820	0	0.00	0	67.3	67.3	67.3
11AM-NOON	2834	0.0	OFF	2834	0	0.00	0	67.2	67.2	67.2
NOON-1PM	2914	0.0	OFF	2914	0	0.00	0	67.1	67.1	67.1
1-2 PM	2960	0.0	OFF	2960	0	0.00	0	67.1	67.1	67.1
2-3 PM	3222	0.0	OFF	3222	0	0.00	0	66.8	66.8	66.8
3-4 PM	3571	0.0	OFF	3571	0	0.00	0	66.3	66.3	66.3
4-5 PM	3579	0.0	OFF	3579	0	0.00	0	66.3	66.3	66.3
5-6 PM	3679	0.0	OFF	3679	0	0.00	0	65.7	65.7	65.7
6-7 PM	3061	0.0	OFF	3061	0	0.00	0	66.9	66.9	66.9
7-8 PM	2349	0.0	1499	1929	420	12.71+	317	67.8	13.3	31.3
8-9 PM	1971	0.0	1499	1500	471	16.35+	399	68.3	10.8	30.8
9-10 PM	1883	0.0	1500	1500	383	16.36+	400	68.4	10.8	30.8
10-11 PM	1410	0.0	1499	1343	67	14.60+	356	69.0	11.9	30.8
11PM-MID	947	0.0	1499	947	0	2.31	82	69.6	39.4	39.2

"OFF" INDICATES NO ROAD WORK (ALL LANES OPEN TO TRAFFIC)

+ INDICATES QUEUEING EXCEEDS USER-SPECIFIED MAXIMUM LIMIT

*----- SITE BREAKDOWN DELAYS -----*	
BREAKDOWN DURATION (MINS)	0
RANGE OF QUEUE DELAY - MIN (VEH-H) MAX	0.0
AV BREAKDOWNS PER DAY	0.00
AV QUEUE DELAY/DAY (VEH-H)	0.0
AV TOTAL DELAY/DAY (VEH-H)	0.0

*----- SITE ACCIDENT DELAYS -----*	
BREAKDOWN DURATION (MINS)	0
RANGE OF QUEUE DELAY - MIN (VEH-H) MAX	0
AV BREAKDOWNS PER DAY	0
AV QUEUE DELAY/DAY (VEH-H)	0
AV TOTAL DELAY/DAY (VEH-H)	0

AVERAGE ACCIDENT NUMBERS (PIA/DAY)	
MAIN ROUTE WITHOUT WORKS	0.0331
MAIN ROUTE WITH WORKS	0.0317
'DIVERSION'	0.0017

PIA: Personal Injury Accidents

ECONOMIC IMPACT ON ROAD USERS	
ROAD USER COSTS PER DAY	\$26,910
CONGESTED HOURS PER DAY*	4

\*Delays Exceeding User-Specified Maximum

**IH 43/94: BECHER ST TO MITCHELL INTERCHANGE (MILWAUKEE COUNTY)**  
**NIGHTTIME 2 LANE CLOSURE**  
**NO DIVERSION ROUTE (MAX QUEUE METHOD)**

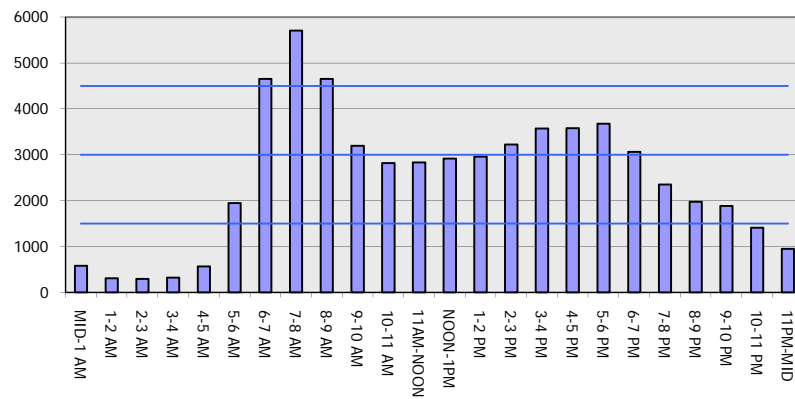
**OCTOBER**

Analyzed for 2009  
 Construction Season

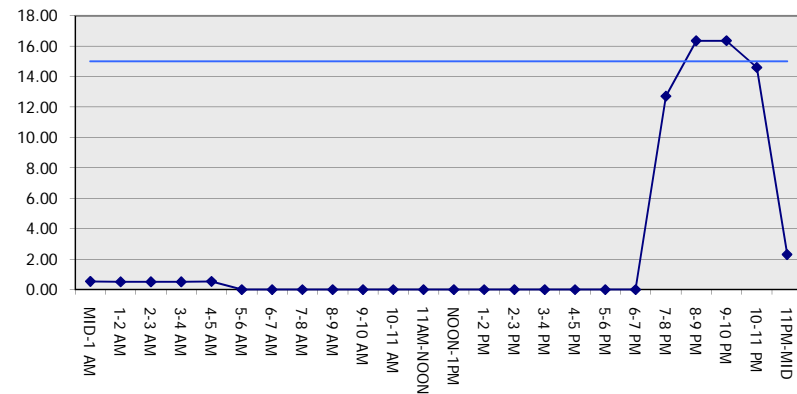
**GRAPHICAL REPRESENTATION OF TRAFFIC MODEL INPUT AND OUTPUT**

**MON-THUR EASTBOUND DIRECTION**

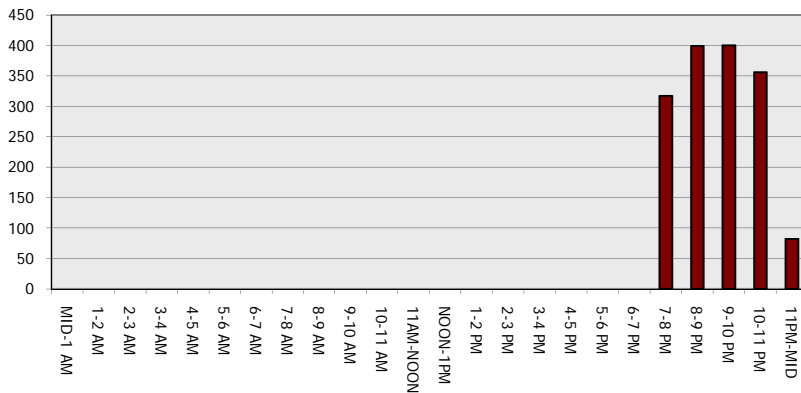
**Main Route - Traffic Demand (Vehicles Per Hour)**



**Main Route Average Delay Per Vehicle (Minutes)**



**Main Route - Average Queue Length (Vehicles)**



**Main Route - Average Speed (MPH)**

