

IH 43/94: BECHER ST TO MITCHELL INTERCHANGE (MILWAUKEE COUNTY) NIGHTTIME 2 LANE CLOSURE NO DIVERSION ROUTE (MAX QUEUE METHOD)	AUGUST
	Analyzed for 2009 Construction Season

SUMMARY OF TRAFFIC MODEL OUTPUT

SUNDAY WESTBOUND DIRECTION

TIME OF DAY	FLOWS AND CAPACITY IN VEH/HR						AVERAGE SPEEDS IN MPH				
	MAIN ROUTE		SITE CAPA CITY	FLOW		AV.DEL PER VEH (MINS)	AVERAGE QUEUE (VEH)	MAIN ROUTE		SITE	
	DEMAND FLOW	PCT HEAVY		MAIN ROUTE	'DIVER TED'			WITHOUT WORK ZONE	WITH WORK ZONE		
MID-1 AM	1587	0.0	1499	1587	0	2.45	38	68.7	38.2	30.8	
1-2 AM	1166	0.0	1500	1166	0	1.12	15	69.3	50.5	38.4	
2-3 AM	914	0.0	1500	914	0	0.58	0	69.6	58.4	42.0	
3-4 AM	509	0.0	1500	509	0	0.53	0	70.1	59.5	43.5	
4-5 AM	465	0.0	1500	465	0	0.53	0	70.2	59.6	43.7	
5-6 AM	606	0.0	1500	606	0	0.54	0	70.0	59.2	43.1	
6-7 AM	888	0.0	1500	888	0	0.57	0	69.6	58.5	42.1	
7-8 AM	1084	0.0	1499	1084	0	0.63	0	69.4	57.5	40.6	
8-9 AM	1570	0.0	1499	1570	0	1.87	28	68.8	42.6	31.7	
9-10 AM	2359	0.0	OFF	2359	0	0.02	1	67.8	67.3	67.3	
10-11 AM	3024	0.0	OFF	3024	0	0.00	0	67.0	67.0	67.0	
11AM-NOON	3158	0.0	OFF	3158	0	0.00	0	66.8	66.8	66.8	
NOON-1PM	3713	0.0	OFF	3713	0	0.00	0	65.5	65.5	65.5	
1-2 PM	4063	0.0	OFF	4063	0	0.00	0	63.1	63.1	63.1	
2-3 PM	4041	0.0	OFF	4041	0	0.00	0	63.2	63.2	63.2	
3-4 PM	4100	0.0	OFF	4100	0	0.00	0	62.8	62.8	62.8	
4-5 PM	3964	0.0	OFF	3964	0	0.00	0	63.8	63.8	63.8	
5-6 PM	3394	0.0	OFF	3394	0	0.00	0	66.5	66.5	66.5	
6-7 PM	3238	0.0	OFF	3238	0	0.00	0	66.7	66.7	66.7	
7-8 PM	2594	0.0	1499	1785	809	13.47+	336	67.5	12.7	35.1	
8-9 PM	2275	0.0	1499	1566	709	16.08+	393	67.9	10.9	30.8	
9-10 PM	1908	0.0	1500	1527	381	16.23+	396	68.4	10.9	30.8	
10-11 PM	1428	0.0	1500	1428	0	15.19+	370	68.9	11.5	30.8	
11PM-MID	1006	0.0	1499	1006	0	2.45	91	69.5	38.4	39.6	

"OFF" INDICATES NO ROAD WORK (ALL LANES OPEN TO TRAFFIC)

+ INDICATES QUEUEING EXCEEDS USER-SPECIFIED MAXIMUM LIMIT

----- SITE BREAKDOWN DELAYS -----	
BREAKDOWN DURATION (MINS)	0
RANGE OF QUEUE DELAY - MIN	0.0
(VEH-H) MAX	0.0
AV BREAKDOWNS PER DAY	0.00
AV QUEUE DELAY/DAY (VEH-H)	0.0
AV TOTAL DELAY/DAY (VEH-H)	0.0

----- SITE ACCIDENT DELAYS -----	
BREAKDOWN DURATION (MINS)	0
RANGE OF QUEUE DELAY - MIN	0
(VEH-H) MAX	0
AV BREAKDOWNS PER DAY	0
AV QUEUE DELAY/DAY (VEH-H)	0
AV TOTAL DELAY/DAY (VEH-H)	0

AVERAGE ACCIDENT NUMBERS (PIA/DAY)	
MAIN ROUTE WITHOUT WORKS	0.0295
MAIN ROUTE WITH WORKS	0.0274
'DIVERSION'	0.0024
PIA: Personal Injury Accidents	
IMPACTS ON ROAD USERS	
ROAD USER COSTS PER DAY	\$35,663
CONGESTED HOURS PER DAY*	4

*Delays Exceeding User-Specified Maximum

IH 43/94: BECHER ST TO MITCHELL INTERCHANGE (MILWAUKEE COUNTY)
NIGHTTIME 2 LANE CLOSURE
NO DIVERSION ROUTE (MAX QUEUE METHOD)

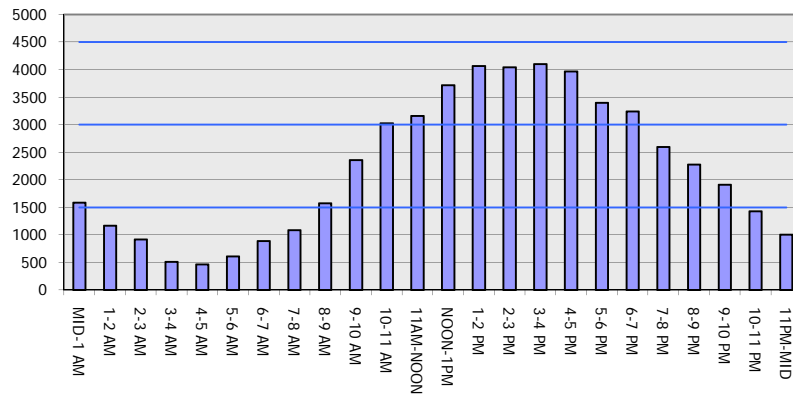
AUGUST

Analyzed for 2009
 Construction Season

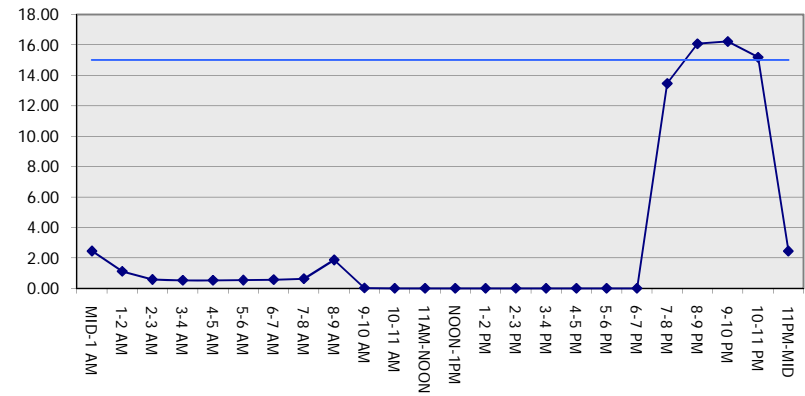
GRAPHICAL REPRESENTATION OF TRAFFIC MODEL INPUT AND OUTPUT

SUNDAY WESTBOUND DIRECTION

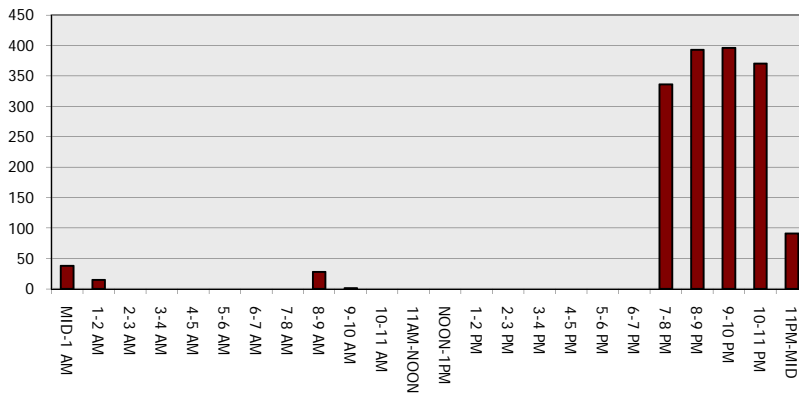
Main Route - Traffic Demand (Vehicles Per Hour)



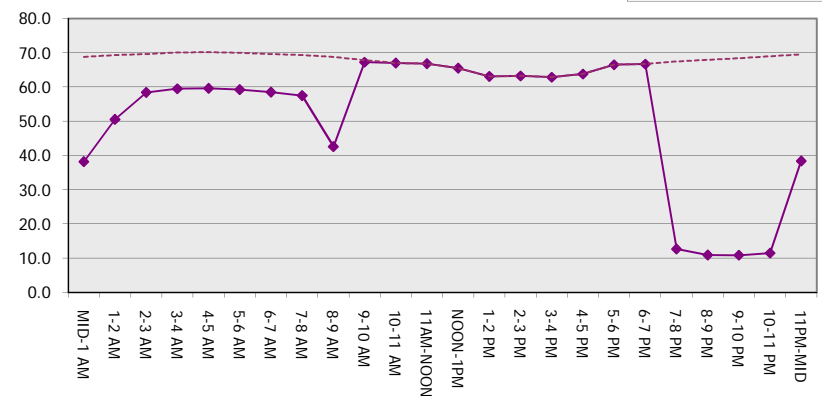
Main Route Average Delay Per Vehicle (Minutes)



Main Route - Average Queue Length (Vehicles)



Main Route - Average Speed (MPH)



IH 43/94: BECHER ST TO MITCHELL INTERCHANGE (MILWAUKEE COUNTY) NIGHTTIME 2 LANE CLOSURE NO DIVERSION ROUTE (MAX QUEUE METHOD)	AUGUST
	Analyzed for 2009 Construction Season

SUMMARY OF TRAFFIC MODEL OUTPUT

SUNDAY EASTBOUND DIRECTION

TIME OF DAY	FLOWS AND CAPACITY IN VEH/HR						AVERAGE SPEEDS IN MPH			
	MAIN ROUTE		SITE CAPA CITY	FLOW		AV.DEL PER VEH (MINS)	AVERAGE QUEUE (VEH)	MAIN ROUTE		SITE
	DEMAND FLOW	PCT HEAVY		MAIN ROUTE	'DIVER TED'			WITHOUT WORK ZONE	WITH WORK ZONE	
MID-1 AM	997	0.0	1500	997	0	0.59	0	69.5	58.2	41.7
1-2 AM	609	0.0	1500	609	0	0.54	0	70.0	59.2	43.1
2-3 AM	426	0.0	1500	426	0	0.52	0	70.2	59.7	43.8
3-4 AM	278	0.0	1500	278	0	0.51	0	70.2	60.0	44.4
4-5 AM	266	0.0	1500	266	0	0.50	0	70.2	60.1	44.4
5-6 AM	416	0.0	1500	416	0	0.52	0	70.2	59.7	43.8
6-7 AM	658	0.0	1500	658	0	0.55	0	69.9	59.1	42.9
7-8 AM	896	0.0	1500	896	0	0.58	0	69.6	58.4	42.0
8-9 AM	1310	0.0	1499	1310	0	0.84	0	69.1	54.1	35.6
9-10 AM	2033	0.0	OFF	2033	0	0.00	0	68.2	68.2	68.2
10-11 AM	2512	0.0	OFF	2512	0	0.00	0	67.6	67.6	67.6
11AM-NOON	3059	0.0	OFF	3059	0	0.00	0	66.9	66.9	66.9
NOON-1PM	3437	0.0	OFF	3437	0	0.00	0	66.4	66.4	66.4
1-2 PM	3251	0.0	OFF	3251	0	0.00	0	66.7	66.7	66.7
2-3 PM	3033	0.0	OFF	3033	0	0.00	0	66.9	66.9	66.9
3-4 PM	3017	0.0	OFF	3017	0	0.00	0	67.0	67.0	67.0
4-5 PM	3016	0.0	OFF	3016	0	0.00	0	67.0	67.0	67.0
5-6 PM	2729	0.0	OFF	2729	0	0.00	0	67.3	67.3	67.3
6-7 PM	2743	0.0	OFF	2743	0	0.00	0	67.3	67.3	67.3
7-8 PM	2386	0.0	1499	1952	434	12.71+	318	67.8	13.3	31.1
8-9 PM	2033	0.0	1499	1489	544	16.31+	398	68.2	10.8	30.8
9-10 PM	1874	0.0	1499	1478	396	16.27+	397	68.4	10.9	30.8
10-11 PM	1386	0.0	1499	1349	36	14.62+	357	69.0	11.9	30.8
11PM-MID	1024	0.0	1499	1024	0	2.41	83	69.5	38.6	38.8

"OFF" INDICATES NO ROAD WORK (ALL LANES OPEN TO TRAFFIC)

+ INDICATES QUEUEING EXCEEDS USER-SPECIFIED MAXIMUM LIMIT

BREAKDOWN DURATION (MINS)	0
RANGE OF QUEUE DELAY - MIN (VEH-H) MAX	0.0
AV BREAKDOWNS PER DAY	0.00
AV QUEUE DELAY/DAY (VEH-H)	0.0
AV TOTAL DELAY/DAY (VEH-H)	0.0

BREAKDOWN DURATION (MINS)	0
RANGE OF QUEUE DELAY - MIN (VEH-H) MAX	0
AV BREAKDOWNS PER DAY	0
AV QUEUE DELAY/DAY (VEH-H)	0
AV TOTAL DELAY/DAY (VEH-H)	0

MAIN ROUTE WITHOUT WORKS	0.0242
MAIN ROUTE WITH WORKS	0.0225
'DIVERSION'	0.0018

PIA: Personal Injury Accidents

ROAD USER COSTS PER DAY	\$31,232
CONGESTED HOURS PER DAY*	4

*Delays Exceeding User-Specified Maximum

IH 43/94: BECHER ST TO MITCHELL INTERCHANGE (MILWAUKEE COUNTY)
NIGHTTIME 2 LANE CLOSURE
NO DIVERSION ROUTE (MAX QUEUE METHOD)

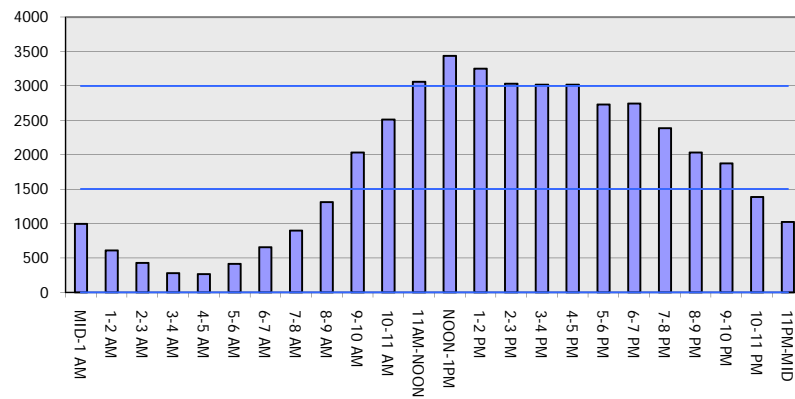
AUGUST

Analyzed for 2009
 Construction Season

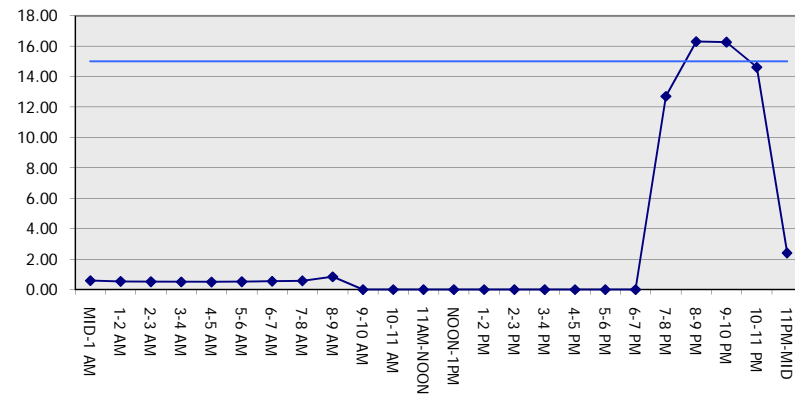
GRAPHICAL REPRESENTATION OF TRAFFIC MODEL INPUT AND OUTPUT

SUNDAY EASTBOUND DIRECTION

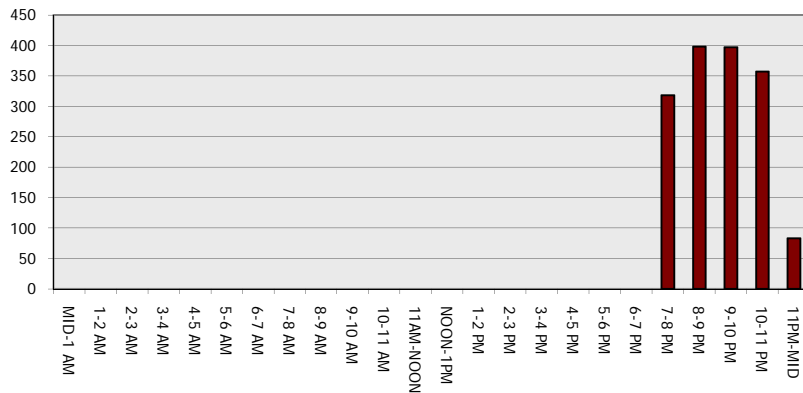
Main Route - Traffic Demand (Vehicles Per Hour)



Main Route Average Delay Per Vehicle (Minutes)



Main Route - Average Queue Length (Vehicles)



Main Route - Average Speed (MPH)

