

IH 43/94: BECHER ST TO MITCHELL INTERCHANGE (MILWAUKEE COUNTY) NIGHTTIME 2 LANE CLOSURE NO DIVERSION ROUTE (MAX QUEUE METHOD)	AUGUST
	Analyzed for 2009 Construction Season

SUMMARY OF TRAFFIC MODEL OUTPUT

FRIDAY WESTBOUND DIRECTION

TIME OF DAY	FLOWS AND CAPACITY IN VEH/HR						AVERAGE SPEEDS IN MPH				
	MAIN ROUTE		SITE CAPA CITY	FLOW		AV.DEL PER VEH (MINS)	AVERAGE QUEUE (VEH)	MAIN ROUTE		SITE	
	DEMAND FLOW	PCT HEAVY		MAIN ROUTE	'DIVER TED'			WITHOUT WORK ZONE	WITH WORK ZONE		
MID-1 AM	861	0.0	1499	861	0	3.63	157	69.7	31.6	38.2	
1-2 AM	624	0.0	1500	624	0	0.55	0	70.0	59.2	43.0	
2-3 AM	596	0.0	1500	596	0	0.54	0	70.0	59.2	43.2	
3-4 AM	486	0.0	1500	486	0	0.53	0	70.1	59.6	43.5	
4-5 AM	861	0.0	1500	861	0	0.57	0	69.7	58.6	42.2	
5-6 AM	1863	0.0	OFF	1863	0	0.00	0	68.4	68.4	68.4	
6-7 AM	2733	0.0	OFF	2733	0	0.00	0	67.3	67.3	67.3	
7-8 AM	2811	0.0	OFF	2811	0	0.00	0	67.3	67.3	67.3	
8-9 AM	3009	0.0	OFF	3009	0	0.00	0	67.0	67.0	67.0	
9-10 AM	2981	0.0	OFF	2981	0	0.00	0	67.0	67.0	67.0	
10-11 AM	3192	0.0	OFF	3192	0	0.00	0	66.8	66.8	66.8	
11AM-NOON	3523	0.0	OFF	3523	0	0.00	0	66.4	66.4	66.4	
NOON-1PM	4010	0.0	OFF	4010	0	0.00	0	63.5	63.5	63.5	
1-2 PM	4150	0.0	OFF	4150	0	0.00	0	62.5	62.5	62.5	
2-3 PM	4353	0.0	OFF	4353	0	0.00	0	61.1	61.1	61.1	
3-4 PM	5209	0.0	OFF	5209	0	0.00	0	55.3	55.3	55.3	
4-5 PM	5138	0.0	OFF	5138	0	0.00	0	55.8	55.8	55.8	
5-6 PM	5333	0.0	OFF	5333	0	0.00	0	54.4	54.4	54.4	
6-7 PM	3634	0.0	OFF	3634	0	0.00	0	66.0	66.0	66.0	
7-8 PM	2957	0.0	1499	1550	1407	16.49+	412	67.1	10.7	36.6	
8-9 PM	2093	0.0	1499	1849	244	12.00+	312	68.1	13.9	30.8	
9-10 PM	2123	0.0	1500	1500	623	16.34+	400	68.1	10.8	30.8	
10-11 PM	2687	0.0	1500	1500	1187	16.31+	400	67.4	10.8	30.8	
11PM-MID	1984	0.0	1500	1500	484	16.35+	400	68.2	10.8	30.8	

"OFF" INDICATES NO ROAD WORK (ALL LANES OPEN TO TRAFFIC)

+ INDICATES QUEUEING EXCEEDS USER-SPECIFIED MAXIMUM LIMIT

----- SITE BREAKDOWN DELAYS -----	
BREAKDOWN DURATION (MINS)	0
RANGE OF QUEUE DELAY - MIN (VEH-H) MAX	0.0
AV BREAKDOWNS PER DAY	0.00
AV QUEUE DELAY/DAY (VEH-H)	0.0
AV TOTAL DELAY/DAY (VEH-H)	0.0

----- SITE ACCIDENT DELAYS -----	
BREAKDOWN DURATION (MINS)	0
RANGE OF QUEUE DELAY - MIN (VEH-H) MAX	0
AV BREAKDOWNS PER DAY	0
AV QUEUE DELAY/DAY (VEH-H)	0
AV TOTAL DELAY/DAY (VEH-H)	0

AVERAGE ACCIDENT NUMBERS (PIA/DAY)	
MAIN ROUTE WITHOUT WORKS	0.0374
MAIN ROUTE WITH WORKS	0.0345
'DIVERSION'	0.0051
<small>PIA: Personal Injury Accidents</small>	
IMPACTS ON ROAD USERS	
ROAD USER COSTS PER DAY	\$44,749
CONGESTED HOURS PER DAY*	5

*Delays Exceeding User-Specified Maximum

IH 43/94: BECHER ST TO MITCHELL INTERCHANGE (MILWAUKEE COUNTY)
NIGHTTIME 2 LANE CLOSURE
NO DIVERSION ROUTE (MAX QUEUE METHOD)

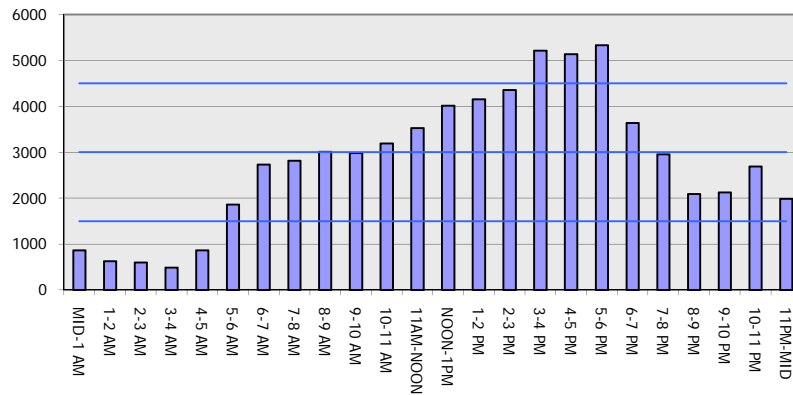
AUGUST

Analyzed for 2009
 Construction Season

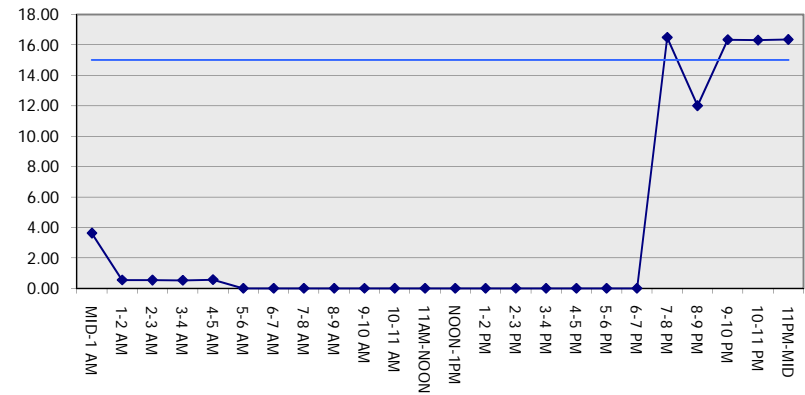
GRAPHICAL REPRESENTATION OF TRAFFIC MODEL INPUT AND OUTPUT

FRIDAY WESTBOUND DIRECTION

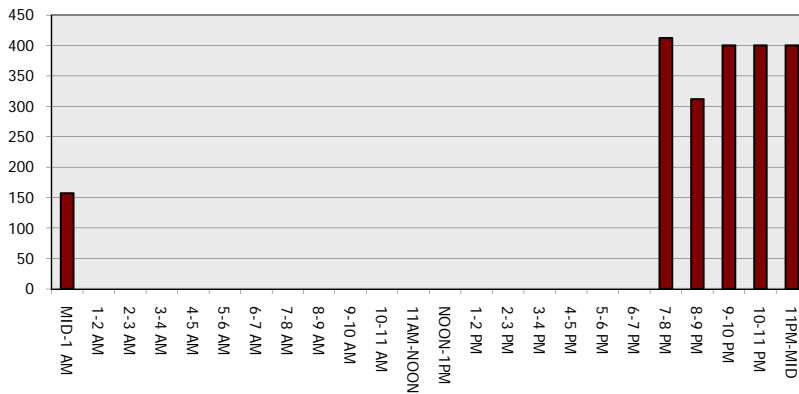
Main Route - Traffic Demand (Vehicles Per Hour)



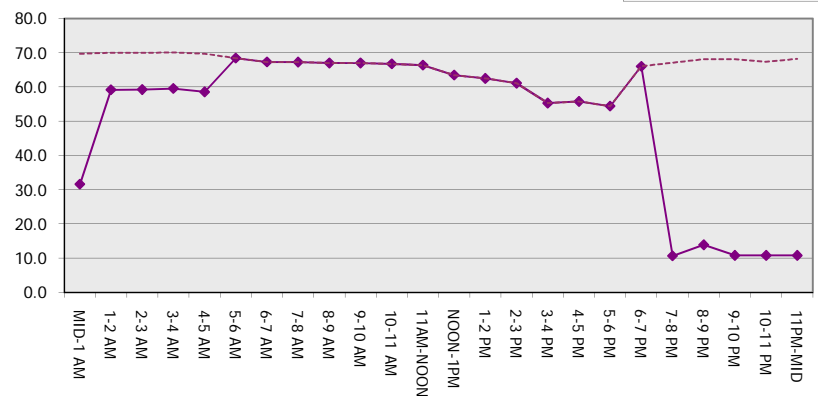
Main Route Average Delay Per Vehicle (Minutes)



Main Route - Average Queue Length (Vehicles)



Main Route - Average Speed (MPH)



IH 43/94: BECHER ST TO MITCHELL INTERCHANGE (MILWAUKEE COUNTY) NIGHTTIME 2 LANE CLOSURE NO DIVERSION ROUTE (MAX QUEUE METHOD)	AUGUST
	Analyzed for 2009 Construction Season

SUMMARY OF TRAFFIC MODEL OUTPUT

FRIDAY EASTBOUND DIRECTION

TIME OF DAY	FLOWS AND CAPACITY IN VEH/HR							AVERAGE SPEEDS IN MPH			
	MAIN ROUTE		SITE CAPA CITY	FLOW		AV.DEL PER VEH (MINS)	AVERAGE QUEUE (VEH)	MAIN ROUTE		SITE	
	DEMAND FLOW	PCT HEAVY		MAIN ROUTE	'DIVER TED'			WITHOUT WORK ZONE	WITH WORK ZONE		
MID-1 AM	765	0.0	1499	765	0	2.26	92	69.8	39.8	41.3	
1-2 AM	402	0.0	1500	402	0	0.52	0	70.2	59.7	43.9	
2-3 AM	373	0.0	1500	373	0	0.52	0	70.2	59.8	44.0	
3-4 AM	371	0.0	1500	371	0	0.52	0	70.2	59.8	44.0	
4-5 AM	601	0.0	1500	601	0	0.54	0	70.0	59.2	43.1	
5-6 AM	1895	0.0	OFF	1895	0	0.00	0	68.4	68.4	68.4	
6-7 AM	4054	0.0	OFF	4054	0	0.00	0	63.2	63.2	63.2	
7-8 AM	4803	0.0	OFF	4803	0	0.00	0	58.1	58.1	58.1	
8-9 AM	4193	0.0	OFF	4193	0	0.00	0	62.2	62.2	62.2	
9-10 AM	3096	0.0	OFF	3096	0	0.00	0	66.9	66.9	66.9	
10-11 AM	3040	0.0	OFF	3040	0	0.00	0	66.9	66.9	66.9	
11AM-NOON	3348	0.0	OFF	3348	0	0.00	0	66.6	66.6	66.6	
NOON-1PM	3505	0.0	OFF	3505	0	0.00	0	66.4	66.4	66.4	
1-2 PM	3658	0.0	OFF	3658	0	0.00	0	65.9	65.9	65.9	
2-3 PM	3864	0.0	OFF	3864	0	0.00	0	64.5	64.5	64.5	
3-4 PM	3954	0.0	OFF	3954	0	0.00	0	63.8	63.8	63.8	
4-5 PM	3687	0.0	OFF	3687	0	0.00	0	65.6	65.6	65.6	
5-6 PM	3756	0.0	OFF	3756	0	0.00	0	65.2	65.2	65.2	
6-7 PM	3617	0.0	OFF	3617	0	0.00	0	66.1	66.1	66.1	
7-8 PM	3006	0.0	1499	1550	1456	16.49+	412	67.0	10.7	36.6	
8-9 PM	2219	0.0	1499	1877	343	12.83+	327	68.0	13.2	30.9	
9-10 PM	1904	0.0	1499	1500	404	16.35+	399	68.4	10.8	30.8	
10-11 PM	2021	0.0	1500	1500	521	16.35+	400	68.2	10.8	30.8	
11PM-MID	1505	0.0	1499	1406	99	15.70+	383	68.9	11.2	30.8	

"OFF" INDICATES NO ROAD WORK (ALL LANES OPEN TO TRAFFIC)

+ INDICATES QUEUEING EXCEEDS USER-SPECIFIED MAXIMUM LIMIT

----- SITE BREAKDOWN DELAYS -----	
BREAKDOWN DURATION (MINS)	0
RANGE OF QUEUE DELAY - MIN (VEH-H) MAX	0.0
AV BREAKDOWNS PER DAY	0.00
AV QUEUE DELAY/DAY (VEH-H)	0.0
AV TOTAL DELAY/DAY (VEH-H)	0.0

----- SITE ACCIDENT DELAYS -----	
BREAKDOWN DURATION (MINS)	0
RANGE OF QUEUE DELAY - MIN (VEH-H) MAX	0
AV BREAKDOWNS PER DAY	0
AV QUEUE DELAY/DAY (VEH-H)	0
AV TOTAL DELAY/DAY (VEH-H)	0

AVERAGE ACCIDENT NUMBERS (PIA/DAY)	
MAIN ROUTE WITHOUT WORKS	0.0354
MAIN ROUTE WITH WORKS	0.0332
'DIVERSION'	0.0036

PIA: Personal Injury Accidents

ECONOMIC IMPACT ON ROAD USERS	
ROAD USER COSTS PER DAY	\$39,815
CONGESTED HOURS PER DAY*	5

*Delays Exceeding User-Specified Maximum

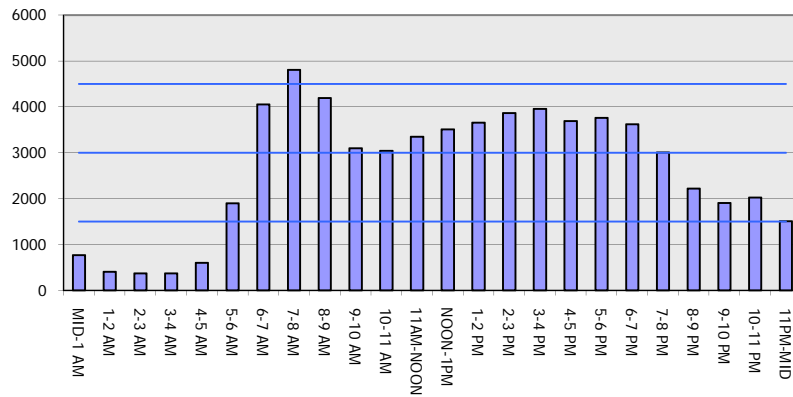
IH 43/94: BECHER ST TO MITCHELL INTERCHANGE (MILWAUKEE COUNTY)
NIGHTTIME 2 LANE CLOSURE
NO DIVERSION ROUTE (MAX QUEUE METHOD)

AUGUST

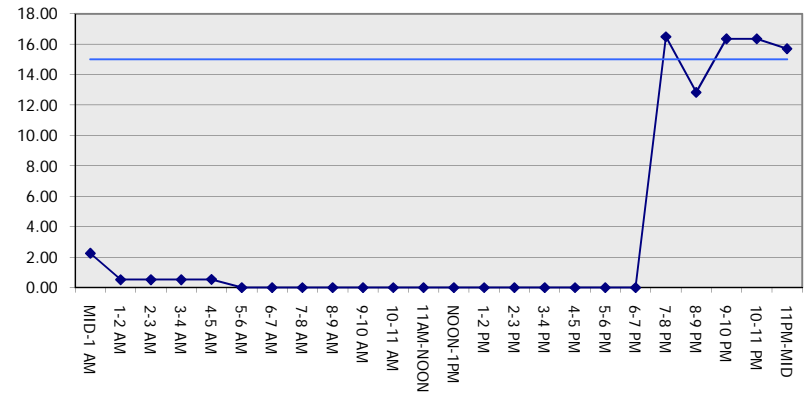
Analyzed for 2009
 Construction Season

GRAPHICAL REPRESENTATION OF TRAFFIC MODEL INPUT AND OUTPUT
FRIDAY EASTBOUND DIRECTION

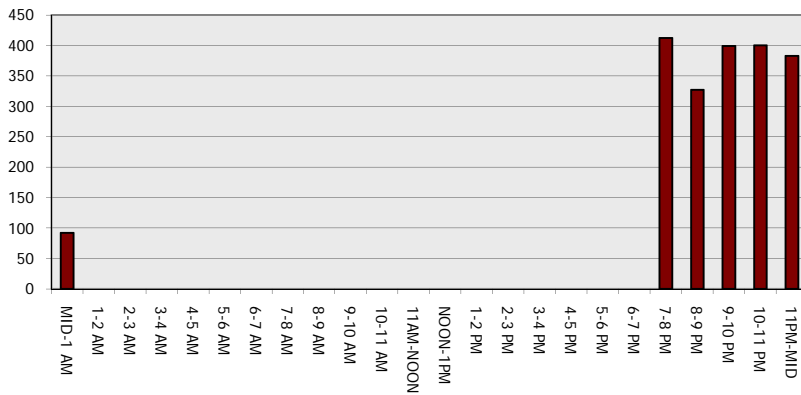
Main Route - Traffic Demand (Vehicles Per Hour)



Main Route Average Delay Per Vehicle (Minutes)



Main Route - Average Queue Length (Vehicles)



Main Route - Average Speed (MPH)

