

<b>IH 43/94: BECHER ST TO MITCHELL INTERCHANGE (MILWAUKEE COUNTY)</b> <b>NIGHTTIME 2 LANE CLOSURE</b> <b>NO DIVERSION ROUTE (MAX QUEUE METHOD)</b>	<b>MAY</b>
	Analyzed for 2009 Construction Season

**SUMMARY OF TRAFFIC MODEL OUTPUT**

SUNDAY WESTBOUND DIRECTION

TIME OF DAY	FLOWS AND CAPACITY IN VEH/HR						AVERAGE SPEEDS IN MPH			
	MAIN ROUTE		SITE CAPA CITY	FLOW		AV.DEL PER VEH (MINS)	AVERAGE QUEUE (VEH)	MAIN ROUTE		SITE
	DEMAND FLOW	PCT HEAVY		MAIN ROUTE	'DIVER TED'			WITHOUT WORK ZONE	WITH WORK ZONE	
MID-1 AM	995	0.0	1500	995	0	0.59	0	69.5	58.2	41.7
1-2 AM	762	0.0	1500	762	0	0.56	0	69.8	58.8	42.5
2-3 AM	871	0.0	1500	871	0	0.57	0	69.7	58.5	42.2
3-4 AM	477	0.0	1500	477	0	0.53	0	70.1	59.6	43.6
4-5 AM	387	0.0	1500	387	0	0.52	0	70.2	59.8	44.0
5-6 AM	537	0.0	1500	537	0	0.54	0	70.0	59.4	43.3
6-7 AM	795	0.0	1500	795	0	0.56	0	69.7	58.7	42.4
7-8 AM	1007	0.0	1499	1007	0	0.59	0	69.5	58.2	41.7
8-9 AM	1514	0.0	1499	1514	0	1.65	21	68.9	44.6	32.4
9-10 AM	2286	0.0	OFF	2286	0	0.02	1	67.9	67.6	67.6
10-11 AM	2787	0.0	OFF	2787	0	0.00	0	67.3	67.3	67.3
11AM-NOON	3449	0.0	OFF	3449	0	0.00	0	66.4	66.4	66.4
NOON-1PM	3771	0.0	OFF	3771	0	0.00	0	65.1	65.1	65.1
1-2 PM	3798	0.0	OFF	3798	0	0.00	0	64.9	64.9	64.9
2-3 PM	3823	0.0	OFF	3823	0	0.00	0	64.7	64.7	64.7
3-4 PM	3735	0.0	OFF	3735	0	0.00	0	65.3	65.3	65.3
4-5 PM	3881	0.0	OFF	3881	0	0.00	0	64.3	64.3	64.3
5-6 PM	3290	0.0	OFF	3290	0	0.00	0	66.6	66.6	66.6
6-7 PM	2770	0.0	OFF	2770	0	0.00	0	67.3	67.3	67.3
7-8 PM	2430	0.0	1499	1926	504	12.86+	320	67.7	13.2	31.8
8-9 PM	2069	0.0	1499	1500	569	16.35+	399	68.2	10.8	30.8
9-10 PM	1700	0.0	1500	1469	230	16.23+	396	68.6	10.9	30.8
10-11 PM	1278	0.0	1499	1278	0	12.59	312	69.1	13.4	31.2
11PM-MID	820	0.0	1500	820	0	1.07	23	69.7	51.5	42.2

"OFF" INDICATES NO ROAD WORK (ALL LANES OPEN TO TRAFFIC)

+ INDICATES QUEUEING EXCEEDS USER-SPECIFIED MAXIMUM LIMIT

*----- SITE BREAKDOWN DELAYS -----*	
BREAKDOWN DURATION (MINS)	0
RANGE OF QUEUE DELAY - MIN (VEH-H) MAX	0.0
AV BREAKDOWNS PER DAY	0.00
AV QUEUE DELAY/DAY (VEH-H)	0.0
AV TOTAL DELAY/DAY (VEH-H)	0.0

*----- SITE ACCIDENT DELAYS -----*	
BREAKDOWN DURATION (MINS)	0
RANGE OF QUEUE DELAY - MIN (VEH-H) MAX	0
AV BREAKDOWNS PER DAY	0
AV QUEUE DELAY/DAY (VEH-H)	0
AV TOTAL DELAY/DAY (VEH-H)	0

AVERAGE ACCIDENT NUMBERS (PIA/DAY)	
MAIN ROUTE WITHOUT WORKS	0.0274
MAIN ROUTE WITH WORKS	0.0257
'DIVERSION'	0.0017
PIA: Personal Injury Accidents	
IMPACTS ON ROAD USERS	
ROAD USER COSTS PER DAY	\$29,965
CONGESTED HOURS PER DAY*	3

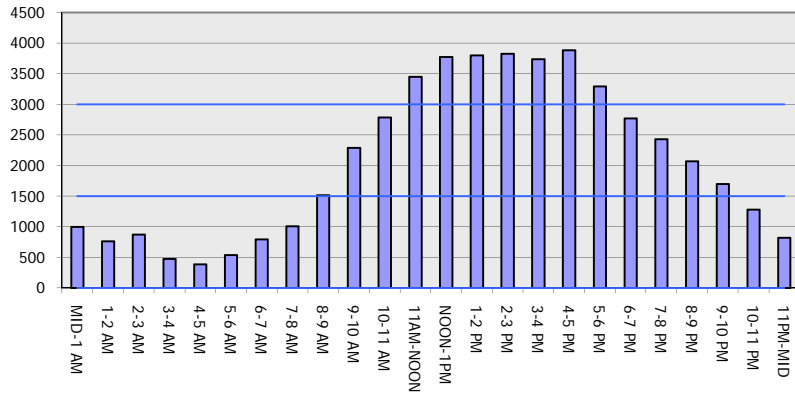
\*Delays Exceeding User-Specified Maximum

**IH 43/94: BECHER ST TO MITCHELL INTERCHANGE (MILWAUKEE COUNTY)**  
**NIGHTTIME 2 LANE CLOSURE**  
**NO DIVERSION ROUTE (MAX QUEUE METHOD)**

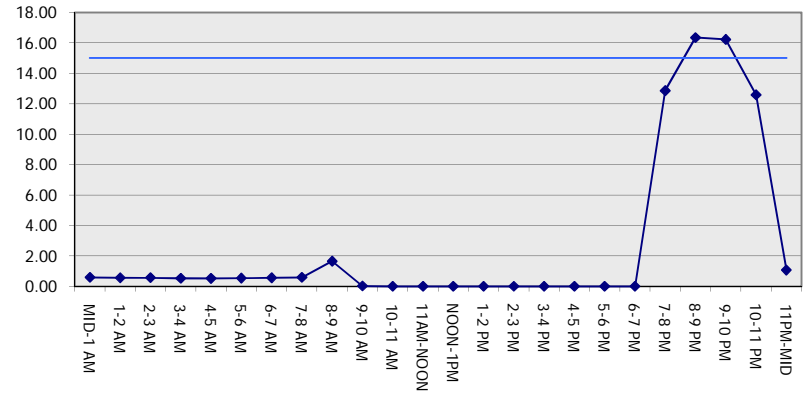
**MAY**  
 Analyzed for 2009  
 Construction Season

**GRAPHICAL REPRESENTATION OF TRAFFIC MODEL INPUT AND OUTPUT**  
**SUNDAY WESTBOUND DIRECTION**

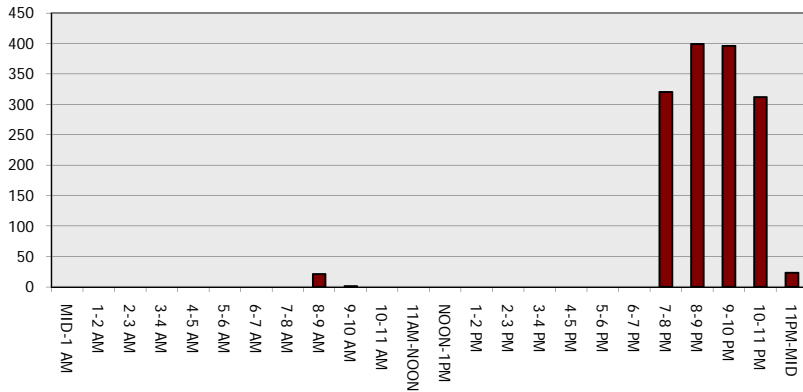
**Main Route - Traffic Demand (Vehicles Per Hour)**



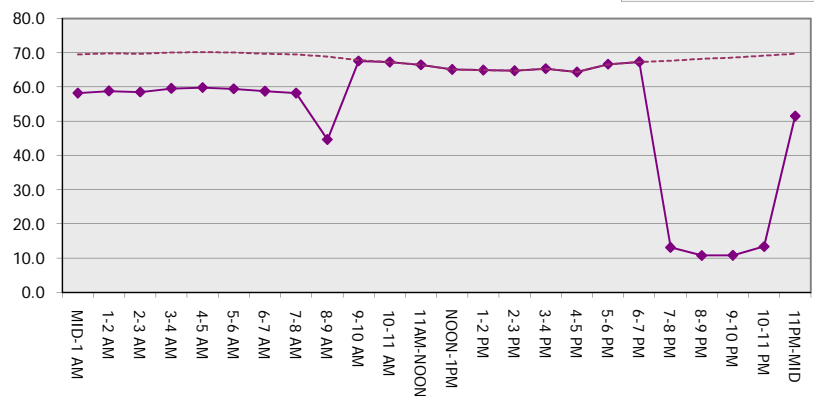
**Main Route Average Delay Per Vehicle (Minutes)**



**Main Route - Average Queue Length (Vehicles)**



**Main Route - Average Speed (MPH)**



<b>IH 43/94: BECHER ST TO MITCHELL INTERCHANGE (MILWAUKEE COUNTY)</b> <b>NIGHTTIME 2 LANE CLOSURE</b> <b>NO DIVERSION ROUTE (MAX QUEUE METHOD)</b>	<b>MAY</b>
	Analyzed for 2009 Construction Season

**SUMMARY OF TRAFFIC MODEL OUTPUT**

SUNDAY EASTBOUND DIRECTION

TIME OF DAY	FLOWS AND CAPACITY IN VEH/HR							AVERAGE SPEEDS IN MPH		
	MAIN ROUTE		SITE CAPA CITY	FLOW		AV.DEL PER VEH (MINS)	AVERAGE QUEUE (VEH)	MAIN ROUTE		SITE
	DEMAND FLOW	PCT HEAVY		MAIN ROUTE	'DIVER TED'			WITHOUT WORK ZONE	WITH WORK ZONE	
MID-1 AM	950	0.0	1500	950	0	0.58	0	69.6	58.3	41.9
1-2 AM	559	0.0	1500	559	0	0.54	0	70.0	59.4	43.3
2-3 AM	392	0.0	1500	392	0	0.52	0	70.2	59.7	43.9
3-4 AM	285	0.0	1500	285	0	0.51	0	70.2	60.0	44.3
4-5 AM	249	0.0	1500	249	0	0.50	0	70.2	60.1	44.5
5-6 AM	406	0.0	1500	406	0	0.52	0	70.2	59.7	43.8
6-7 AM	662	0.0	1500	662	0	0.55	0	69.9	59.1	42.9
7-8 AM	925	0.0	1499	925	0	0.58	0	69.6	58.4	41.9
8-9 AM	1460	0.0	1499	1460	0	1.33	10	68.9	47.9	32.7
9-10 AM	1919	0.0	OFF	1919	0	0.00	0	68.4	68.2	68.2
10-11 AM	2334	0.0	OFF	2334	0	0.00	0	67.8	67.8	67.8
11AM-NOON	2911	0.0	OFF	2911	0	0.00	0	67.1	67.1	67.1
NOON-1PM	3286	0.0	OFF	3286	0	0.00	0	66.6	66.6	66.6
1-2 PM	3194	0.0	OFF	3194	0	0.00	0	66.8	66.8	66.8
2-3 PM	3090	0.0	OFF	3090	0	0.00	0	66.9	66.9	66.9
3-4 PM	3370	0.0	OFF	3370	0	0.00	0	66.6	66.6	66.6
4-5 PM	3404	0.0	OFF	3404	0	0.00	0	66.5	66.5	66.5
5-6 PM	3240	0.0	OFF	3240	0	0.00	0	66.7	66.7	66.7
6-7 PM	2937	0.0	OFF	2937	0	0.00	0	67.1	67.1	67.1
7-8 PM	2692	0.0	1499	1748	944	13.72+	344	67.4	12.5	35.4
8-9 PM	2291	0.0	1499	1659	632	15.76+	386	67.9	11.1	30.8
9-10 PM	2017	0.0	1500	1500	517	16.35+	400	68.2	10.8	30.8
10-11 PM	1520	0.0	1500	1445	76	15.97+	389	68.9	11.1	30.8
11PM-MID	966	0.0	1499	966	0	3.28	130	69.6	33.3	38.3

"OFF" INDICATES NO ROAD WORK (ALL LANES OPEN TO TRAFFIC)

+ INDICATES QUEUEING EXCEEDS USER-SPECIFIED MAXIMUM LIMIT

*----- SITE BREAKDOWN DELAYS -----*	
BREAKDOWN DURATION (MINS)	0
RANGE OF QUEUE DELAY - MIN (VEH-H) MAX	0.0
AV BREAKDOWNS PER DAY	0.00
AV QUEUE DELAY/DAY (VEH-H)	0.0
AV TOTAL DELAY/DAY (VEH-H)	0.0

*----- SITE ACCIDENT DELAYS -----*	
BREAKDOWN DURATION (MINS)	0
RANGE OF QUEUE DELAY - MIN (VEH-H) MAX	0
AV BREAKDOWNS PER DAY	0
AV QUEUE DELAY/DAY (VEH-H)	0
AV TOTAL DELAY/DAY (VEH-H)	0

AVERAGE ACCIDENT NUMBERS (PIA/DAY)	
MAIN ROUTE WITHOUT WORKS	0.0251
MAIN ROUTE WITH WORKS	0.0230
'DIVERSION'	0.0028

PIA: Personal Injury Accidents

ECONOMIC IMPACT ON ROAD USERS	
ROAD USER COSTS PER DAY	\$35,769
CONGESTED HOURS PER DAY*	4

\*Delays Exceeding User-Specified Maximum

**IH 43/94: BECHER ST TO MITCHELL INTERCHANGE (MILWAUKEE COUNTY)**  
**NIGHTTIME 2 LANE CLOSURE**  
**NO DIVERSION ROUTE (MAX QUEUE METHOD)**

**MAY**  
 Analyzed for 2009  
 Construction Season

**GRAPHICAL REPRESENTATION OF TRAFFIC MODEL INPUT AND OUTPUT**  
**SUNDAY EASTBOUND DIRECTION**

