

IH 43/94: BECHER ST TO MITCHELL INTERCHANGE (MILWAUKEE COUNTY) NIGHTTIME CLOSURE NO DIVERSION ROUTE (MAX QUEUE METHOD)	MAY
	Analyzed for 2009 Construction Season

SUMMARY OF TRAFFIC MODEL OUTPUT

SATURDAY WESTBOUND DIRECTION

TIME OF DAY	FLOWS AND CAPACITY IN VEH/HR						AVERAGE SPEEDS IN MPH			
	MAIN ROUTE		SITE CAPA CITY	FLOW		AV.DEL PER VEH (MINS)	AVERAGE QUEUE (VEH)	MAIN ROUTE		SITE
	DEMAND FLOW	PCT HEAVY		MAIN ROUTE	'DIVER TED'			WITHOUT WORK ZONE	WITH WORK ZONE	
MID-1 AM	1052	0.0	3000	1052	0	0.35	0	69.4	62.2	49.7
1-2 AM	757	0.0	3000	757	0	0.35	0	69.8	62.4	49.7
2-3 AM	773	0.0	3000	773	0	0.35	0	69.8	62.4	49.7
3-4 AM	469	0.0	3000	469	0	0.36	0	70.2	62.7	49.7
4-5 AM	576	0.0	3000	576	0	0.36	0	70.0	62.5	49.7
5-6 AM	947	0.0	3000	947	0	0.35	0	69.6	62.3	49.7
6-7 AM	1276	0.0	3000	1276	0	0.35	0	69.1	62.0	49.7
7-8 AM	1778	0.0	3000	1778	0	0.34	0	68.5	61.7	49.7
8-9 AM	2332	0.0	OFF	2332	0	0.00	0	67.8	67.8	67.8
9-10 AM	1964	0.0	OFF	1964	0	0.00	0	68.3	68.3	68.3
10-11 AM	2587	0.0	OFF	2587	0	0.00	0	67.5	67.5	67.5
11AM-NOON	3632	0.0	OFF	3632	0	0.00	0	66.1	66.1	66.1
NOON-1PM	3865	0.0	OFF	3865	0	0.00	0	64.5	64.5	64.5
1-2 PM	3807	0.0	OFF	3807	0	0.00	0	64.8	64.8	64.8
2-3 PM	3770	0.0	OFF	3770	0	0.00	0	65.1	65.1	65.1
3-4 PM	3666	0.0	OFF	3666	0	0.00	0	65.8	65.8	65.8
4-5 PM	3459	0.0	OFF	3459	0	0.00	0	66.4	66.4	66.4
5-6 PM	3133	0.0	OFF	3133	0	0.00	0	66.8	66.8	66.8
6-7 PM	2751	0.0	3000	2751	0	0.57	0	67.3	56.9	41.5
7-8 PM	1799	0.0	3000	1799	0	0.34	0	68.5	61.7	49.7
8-9 PM	1749	0.0	3000	1749	0	0.34	0	68.6	61.7	49.7
9-10 PM	2408	0.0	3000	2408	0	0.34	0	67.8	61.0	49.1
10-11 PM	1938	0.0	3000	1938	0	0.34	0	68.3	61.6	49.7
11PM-MID	1501	0.0	3000	1501	0	0.34	0	68.9	61.9	49.7

"OFF" INDICATES NO ROAD WORK (ALL LANES OPEN TO TRAFFIC)

----- SITE BREAKDOWN DELAYS -----	
BREAKDOWN DURATION (MINS)	0
RANGE OF QUEUE DELAY - MIN (VEH-H) MAX	0.0
AV BREAKDOWNS PER DAY	0.00
AV QUEUE DELAY/DAY (VEH-H)	0.0
AV TOTAL DELAY/DAY (VEH-H)	0.0

----- SITE ACCIDENT DELAYS -----	
BREAKDOWN DURATION (MINS)	0
RANGE OF QUEUE DELAY - MIN (VEH-H) MAX	0
AV BREAKDOWNS PER DAY	0
AV QUEUE DELAY/DAY (VEH-H)	0
AV TOTAL DELAY/DAY (VEH-H)	0

AVERAGE ACCIDENT NUMBERS (PIA/DAY)	
MAIN ROUTE WITHOUT WORKS	0.0289
MAIN ROUTE WITH WORKS	0.0276
'DIVERSION'	0.0000
PIA: Personal Injury Accidents	
IMPACTS ON ROAD USERS	
ROAD USER COSTS PER DAY	\$2,037
CONGESTED HOURS PER DAY*	0

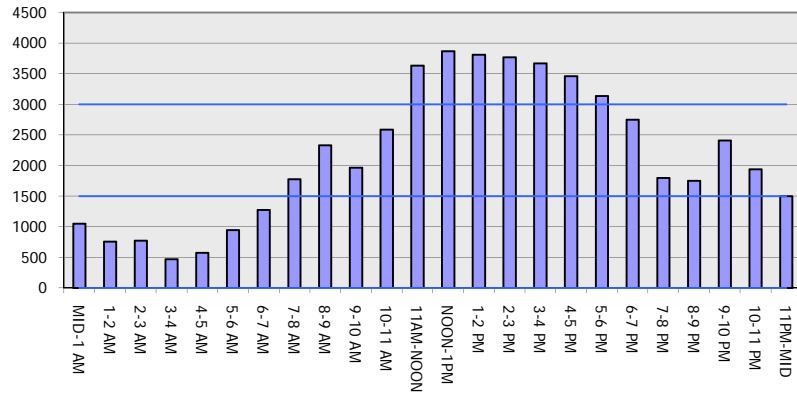
*Delays Exceeding User-Specified Maximum

IH 43/94: BECHER ST TO MITCHELL INTERCHANGE (MILWAUKEE COUNTY)
NIGHTTIME CLOSURE
NO DIVERSION ROUTE (MAX QUEUE METHOD)

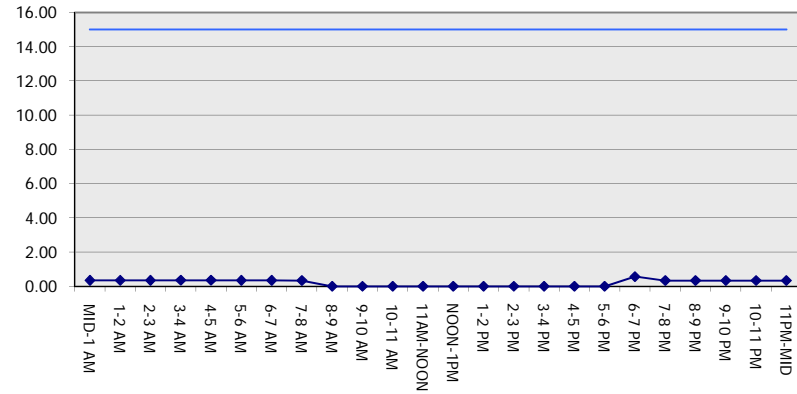
MAY
 Analyzed for 2009
 Construction Season

GRAPHICAL REPRESENTATION OF TRAFFIC MODEL INPUT AND OUTPUT
SATURDAY WESTBOUND DIRECTION

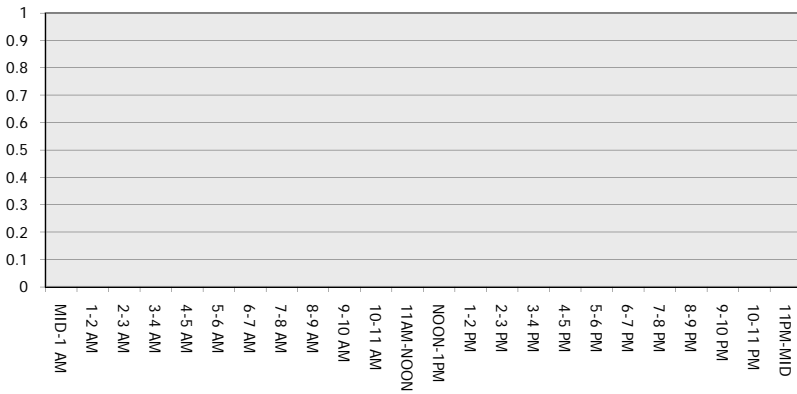
Main Route - Traffic Demand (Vehicles Per Hour)



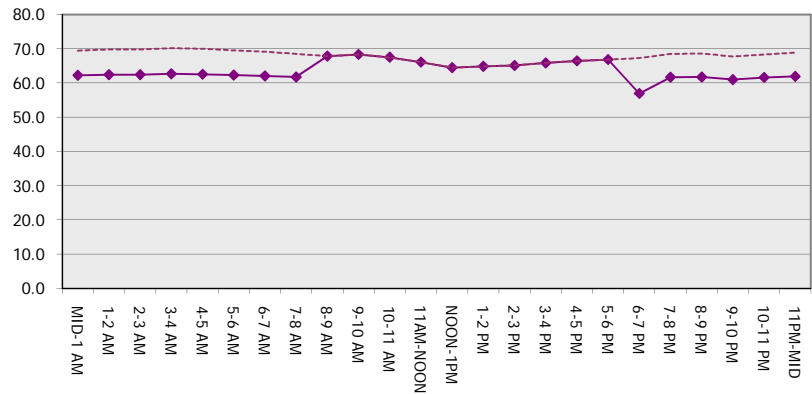
Main Route Average Delay Per Vehicle (Minutes)



Main Route - Average Queue Length (Vehicles)



Main Route - Average Speed (MPH)



IH 43/94: BECHER ST TO MITCHELL INTERCHANGE (MILWAUKEE COUNTY) NIGHTTIME CLOSURE NO DIVERSION ROUTE (MAX QUEUE METHOD)	MAY
	Analyzed for 2009 Construction Season

SUMMARY OF TRAFFIC MODEL OUTPUT

SATURDAY EASTBOUND DIRECTION

TIME OF DAY	FLOWS AND CAPACITY IN VEH/HR						AVERAGE SPEEDS IN MPH			
	MAIN ROUTE		SITE CAPA CITY	FLOW		AV.DEL PER VEH (MINS)	AVERAGE QUEUE (VEH)	MAIN ROUTE		SITE
	DEMAND FLOW	PCT HEAVY		MAIN ROUTE	'DIVER TED'			WITHOUT WORK ZONE	WITH WORK ZONE	
MID-1 AM	928	0.0	3000	928	0	0.35	0	69.6	62.3	49.7
1-2 AM	540	0.0	3000	540	0	0.36	0	70.0	62.6	49.7
2-3 AM	452	0.0	3000	452	0	0.36	0	70.2	62.7	49.7
3-4 AM	316	0.0	3000	316	0	0.36	0	70.2	62.7	49.7
4-5 AM	382	0.0	3000	382	0	0.36	0	70.2	62.7	49.7
5-6 AM	796	0.0	3000	796	0	0.35	0	69.7	62.4	49.7
6-7 AM	1243	0.0	3000	1243	0	0.35	0	69.2	62.1	49.7
7-8 AM	1785	0.0	3000	1785	0	0.34	0	68.5	61.7	49.7
8-9 AM	2227	0.0	OFF	2227	0	0.00	0	67.9	67.9	67.9
9-10 AM	1816	0.0	OFF	1816	0	0.00	0	68.5	68.5	68.5
10-11 AM	2320	0.0	OFF	2320	0	0.00	0	67.9	67.9	67.9
11AM-NOON	3208	0.0	OFF	3208	0	0.00	0	66.8	66.8	66.8
NOON-1PM	3397	0.0	OFF	3397	0	0.00	0	66.5	66.5	66.5
1-2 PM	3314	0.0	OFF	3314	0	0.00	0	66.6	66.6	66.6
2-3 PM	3613	0.0	OFF	3613	0	0.00	0	66.2	66.2	66.2
3-4 PM	3749	0.0	OFF	3749	0	0.00	0	65.3	65.3	65.3
4-5 PM	3824	0.0	OFF	3824	0	0.00	0	64.7	64.7	64.7
5-6 PM	3735	0.0	OFF	3735	0	0.00	0	65.3	65.3	65.3
6-7 PM	3415	0.0	2999	3415	0	4.95	256	66.5	25.9	37.3
7-8 PM	2164	0.0	2999	2164	0	1.81	129	68.1	42.9	46.1
8-9 PM	1972	0.0	3000	1972	0	0.34	0	68.3	61.5	49.7
9-10 PM	2307	0.0	3000	2307	0	0.33	0	67.9	61.4	49.7
10-11 PM	1909	0.0	3000	1909	0	0.34	0	68.4	61.6	49.7
11PM-MID	1407	0.0	3000	1407	0	0.34	0	69.0	62.0	49.7

"OFF" INDICATES NO ROAD WORK (ALL LANES OPEN TO TRAFFIC)

----- SITE BREAKDOWN DELAYS -----	
BREAKDOWN DURATION (MINS)	0
RANGE OF QUEUE DELAY - MIN (VEH-H) MAX	0.0
AV BREAKDOWNS PER DAY	0.00
AV QUEUE DELAY/DAY (VEH-H)	0.0
AV TOTAL DELAY/DAY (VEH-H)	0.0

----- SITE ACCIDENT DELAYS -----	
BREAKDOWN DURATION (MINS)	0
RANGE OF QUEUE DELAY - MIN (VEH-H) MAX	0
AV BREAKDOWNS PER DAY	0
AV QUEUE DELAY/DAY (VEH-H)	0
AV TOTAL DELAY/DAY (VEH-H)	0

AVERAGE ACCIDENT NUMBERS (PIA/DAY)	
MAIN ROUTE WITHOUT WORKS	0.0283
MAIN ROUTE WITH WORKS	0.0270
'DIVERSION'	0.0000

PIA: Personal Injury Accidents

ECONOMIC IMPACT ON ROAD USERS	
ROAD USER COSTS PER DAY	\$7,032
CONGESTED HOURS PER DAY*	0

*Delays Exceeding User-Specified Maximum

IH 43/94: BECHER ST TO MITCHELL INTERCHANGE (MILWAUKEE COUNTY)
NIGHTTIME CLOSURE
NO DIVERSION ROUTE (MAX QUEUE METHOD)

MAY
 Analyzed for 2009
 Construction Season

GRAPHICAL REPRESENTATION OF TRAFFIC MODEL INPUT AND OUTPUT
SATURDAY EASTBOUND DIRECTION

