

IH 43/94: BECHER ST TO MITCHELL INTERCHANGE (MILWAUKEE COUNTY) NIGHTTIME CLOSURE NO DIVERSION ROUTE (MAX QUEUE METHOD)	MAY
	Analyzed for 2009 Construction Season

SUMMARY OF TRAFFIC MODEL OUTPUT

FRIDAY WESTBOUND DIRECTION

TIME OF DAY	FLOWS AND CAPACITY IN VEH/HR						AVERAGE SPEEDS IN MPH			
	MAIN ROUTE		SITE CAPA CITY	FLOW		AV.DEL PER VEH (MINS)	AVERAGE QUEUE (VEH)	MAIN ROUTE		SITE
	DEMAND FLOW	PCT HEAVY		MAIN ROUTE	'DIVER TED'			WITHOUT WORK ZONE	WITH WORK ZONE	
MID-1 AM	782	0.0	3000	782	0	0.35	0	69.7	62.4	49.7
1-2 AM	531	0.0	3000	531	0	0.36	0	70.0	62.6	49.7
2-3 AM	529	0.0	3000	529	0	0.36	0	70.0	62.6	49.7
3-4 AM	451	0.0	3000	451	0	0.36	0	70.2	62.7	49.7
4-5 AM	809	0.0	3000	809	0	0.35	0	69.7	62.4	49.7
5-6 AM	1784	0.0	OFF	1784	0	0.00	0	68.5	68.5	68.5
6-7 AM	2947	0.0	OFF	2947	0	0.00	0	67.1	67.1	67.1
7-8 AM	3295	0.0	OFF	3295	0	0.00	0	66.6	66.6	66.6
8-9 AM	3132	0.0	OFF	3132	0	0.00	0	66.8	66.8	66.8
9-10 AM	2814	0.0	OFF	2814	0	0.00	0	67.3	67.3	67.3
10-11 AM	2878	0.0	OFF	2878	0	0.00	0	67.1	67.1	67.1
11AM-NOON	3407	0.0	OFF	3407	0	0.00	0	66.5	66.5	66.5
NOON-1PM	3851	0.0	OFF	3851	0	0.00	0	64.5	64.5	64.5
1-2 PM	3968	0.0	OFF	3968	0	0.00	0	63.7	63.7	63.7
2-3 PM	4487	0.0	OFF	4487	0	0.00	0	60.2	60.2	60.2
3-4 PM	5431	0.0	OFF	5431	0	0.00	0	53.8	53.8	53.8
4-5 PM	5780	0.0	OFF	5780	0	0.00	0	51.4	51.4	51.4
5-6 PM	5059	0.0	OFF	5059	0	0.00	0	56.3	56.3	56.3
6-7 PM	3729	0.0	OFF	3729	0	0.00	0	65.4	65.4	65.4
7-8 PM	2787	0.0	3000	2787	0	0.59	0	67.3	56.6	40.8
8-9 PM	2300	0.0	3000	2300	0	0.33	0	67.9	61.4	49.7
9-10 PM	2219	0.0	3000	2219	0	0.33	0	68.0	61.4	49.7
10-11 PM	2156	0.0	3000	2156	0	0.33	0	68.1	61.4	49.7
11PM-MID	1483	0.0	3000	1483	0	0.34	0	68.9	61.9	49.7

"OFF" INDICATES NO ROAD WORK (ALL LANES OPEN TO TRAFFIC)

----- SITE BREAKDOWN DELAYS -----	
BREAKDOWN DURATION (MINS)	0
RANGE OF QUEUE DELAY - MIN (VEH-H) MAX	0.0
AV BREAKDOWNS PER DAY	0.00
AV QUEUE DELAY/DAY (VEH-H)	0.0
AV TOTAL DELAY/DAY (VEH-H)	0.0

----- SITE ACCIDENT DELAYS -----	
BREAKDOWN DURATION (MINS)	0
RANGE OF QUEUE DELAY - MIN (VEH-H) MAX	0
AV BREAKDOWNS PER DAY	0
AV QUEUE DELAY/DAY (VEH-H)	0
AV TOTAL DELAY/DAY (VEH-H)	0

AVERAGE ACCIDENT NUMBERS (PIA/DAY)	
MAIN ROUTE WITHOUT WORKS	0.0371
MAIN ROUTE WITH WORKS	0.0362
'DIVERSION'	0.0000
PIA: Personal Injury Accidents	
IMPACTS ON ROAD USERS	
ROAD USER COSTS PER DAY	\$1,299
CONGESTED HOURS PER DAY*	0

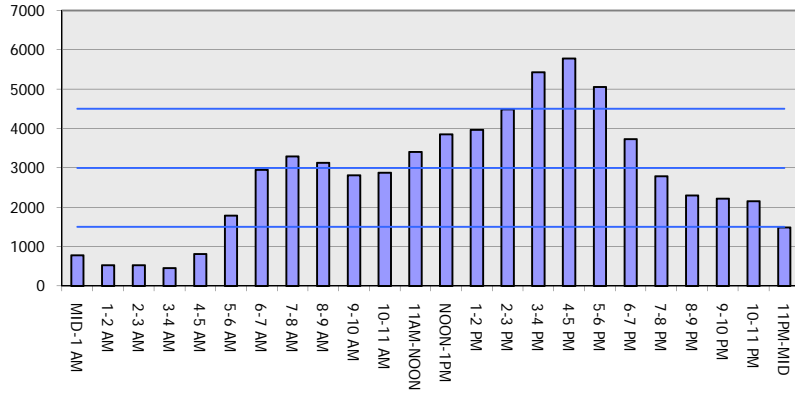
*Delays Exceeding User-Specified Maximum

IH 43/94: BECHER ST TO MITCHELL INTERCHANGE (MILWAUKEE COUNTY)
NIGHTTIME CLOSURE
NO DIVERSION ROUTE (MAX QUEUE METHOD)

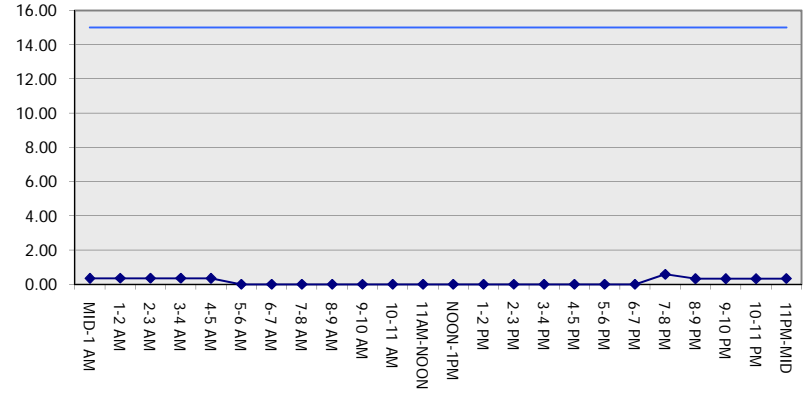
MAY
 Analyzed for 2009
 Construction Season

GRAPHICAL REPRESENTATION OF TRAFFIC MODEL INPUT AND OUTPUT
FRIDAY WESTBOUND DIRECTION

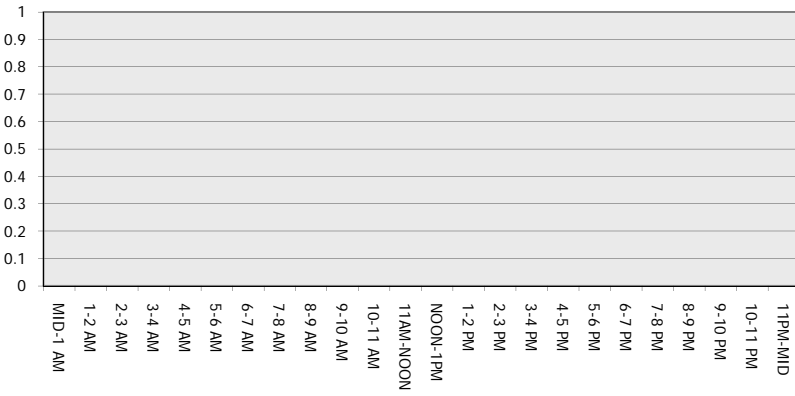
Main Route - Traffic Demand (Vehicles Per Hour)



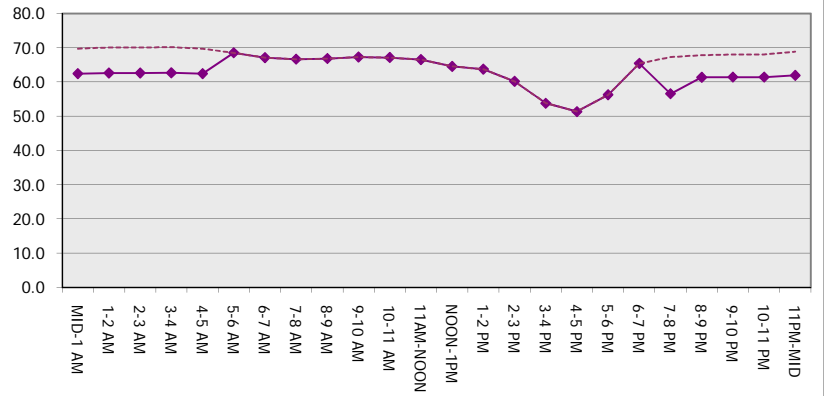
Main Route Average Delay Per Vehicle (Minutes)



Main Route - Average Queue Length (Vehicles)



Main Route - Average Speed (MPH)



IH 43/94: BECHER ST TO MITCHELL INTERCHANGE (MILWAUKEE COUNTY) NIGHTTIME CLOSURE NO DIVERSION ROUTE (MAX QUEUE METHOD)	MAY
	Analyzed for 2009 Construction Season

SUMMARY OF TRAFFIC MODEL OUTPUT

FRIDAY EASTBOUND DIRECTION

TIME OF DAY	FLOWS AND CAPACITY IN VEH/HR							AVERAGE SPEEDS IN MPH		
	MAIN ROUTE		SITE CAPA CITY	FLOW		AV.DEL PER VEH (MINS)	AVERAGE QUEUE (VEH)	MAIN ROUTE		SITE
	DEMAND FLOW	PCT HEAVY		MAIN ROUTE	'DIVER TED'			WITHOUT WORK ZONE	WITH WORK ZONE	
MID-1 AM	682	0.0	3000	682	0	0.36	0	69.9	62.5	49.7
1-2 AM	392	0.0	3000	392	0	0.36	0	70.2	62.7	49.7
2-3 AM	361	0.0	3000	361	0	0.36	0	70.2	62.7	49.7
3-4 AM	355	0.0	3000	355	0	0.36	0	70.2	62.7	49.7
4-5 AM	592	0.0	3000	592	0	0.36	0	70.0	62.5	49.7
5-6 AM	2031	0.0	OFF	2031	0	0.00	0	68.2	68.2	68.2
6-7 AM	4423	0.0	OFF	4423	0	0.00	0	60.6	60.6	60.6
7-8 AM	5702	0.0	OFF	5702	0	0.00	0	51.9	51.9	51.9
8-9 AM	4501	0.0	OFF	4501	0	0.00	0	60.1	60.1	60.1
9-10 AM	3245	0.0	OFF	3245	0	0.00	0	66.7	66.7	66.7
10-11 AM	2890	0.0	OFF	2890	0	0.00	0	67.1	67.1	67.1
11AM-NOON	3281	0.0	OFF	3281	0	0.00	0	66.6	66.6	66.6
NOON-1PM	3348	0.0	OFF	3348	0	0.00	0	66.6	66.6	66.6
1-2 PM	3466	0.0	OFF	3466	0	0.00	0	66.4	66.4	66.4
2-3 PM	3819	0.0	OFF	3819	0	0.00	0	64.8	64.8	64.8
3-4 PM	4130	0.0	OFF	4130	0	0.00	0	62.7	62.7	62.7
4-5 PM	4035	0.0	OFF	4035	0	0.00	0	63.3	63.3	63.3
5-6 PM	4068	0.0	OFF	4068	0	0.00	0	63.1	63.1	63.1
6-7 PM	3832	0.0	OFF	3832	0	0.00	0	64.6	64.6	64.6
7-8 PM	3324	0.0	2999	3324	0	4.00	197	66.6	29.3	37.3
8-9 PM	2702	0.0	2999	2702	0	3.93	196	67.4	29.7	38.8
9-10 PM	2620	0.0	3000	2620	0	0.50	1	67.5	58.1	44.1
10-11 PM	2122	0.0	3000	2122	0	0.33	0	68.1	61.5	49.7
11PM-MID	1535	0.0	3000	1535	0	0.34	0	68.8	61.9	49.7

"OFF" INDICATES NO ROAD WORK (ALL LANES OPEN TO TRAFFIC)

----- SITE BREAKDOWN DELAYS -----	
BREAKDOWN DURATION (MINS)	0
RANGE OF QUEUE DELAY - MIN (VEH-H) MAX	0.0
AV BREAKDOWNS PER DAY	0.00
AV QUEUE DELAY/DAY (VEH-H)	0.0
AV TOTAL DELAY/DAY (VEH-H)	0.0

----- SITE ACCIDENT DELAYS -----	
BREAKDOWN DURATION (MINS)	0
RANGE OF QUEUE DELAY - MIN (VEH-H) MAX	0
AV BREAKDOWNS PER DAY	0
AV QUEUE DELAY/DAY (VEH-H)	0
AV TOTAL DELAY/DAY (VEH-H)	0

AVERAGE ACCIDENT NUMBERS (PIA/DAY)	
MAIN ROUTE WITHOUT WORKS	0.0376
MAIN ROUTE WITH WORKS	0.0366
'DIVERSION'	0.0000

PIA: Personal Injury Accidents

ECONOMIC IMPACT ON ROAD USERS	
ROAD USER COSTS PER DAY	\$6,504
CONGESTED HOURS PER DAY*	0

*Delays Exceeding User-Specified Maximum

IH 43/94: BECHER ST TO MITCHELL INTERCHANGE (MILWAUKEE COUNTY)
NIGHTTIME CLOSURE
NO DIVERSION ROUTE (MAX QUEUE METHOD)

MAY
 Analyzed for 2009
 Construction Season

GRAPHICAL REPRESENTATION OF TRAFFIC MODEL INPUT AND OUTPUT
FRIDAY EASTBOUND DIRECTION

