

IH 94: STH 181 TO USH 41 (MILWAUKEE COUNTY) NIGHTTIME 2 LANE CLOSURE NO DIVERSION ROUTE (MAX QUEUE METHOD)	OCTOBER
	Analyzed for 2009 Construction Season

SUMMARY OF TRAFFIC MODEL OUTPUT

SUNDAY WESTBOUND DIRECTION

TIME OF DAY	FLOWS AND CAPACITY IN VEH/HR						AVERAGE SPEEDS IN MPH			
	MAIN ROUTE		SITE CAPA CITY	FLOW		AV.DEL PER VEH (MINS)	AVERAGE QUEUE (VEH)	MAIN ROUTE		SITE
	DEMAND FLOW	PCT HEAVY		MAIN ROUTE	'DIVER TED'			WITHOUT WORK ZONE	WITH WORK ZONE	
MID-1 AM	1556	0.0	1499	1556	0	1.98	25	68.8	35.3	30.8
1-2 AM	1149	0.0	1500	1149	0	0.80	5	69.3	50.1	39.7
2-3 AM	1193	0.0	1500	1193	0	0.70	0	69.2	51.9	38.7
3-4 AM	605	0.0	1500	605	0	0.54	0	70.0	55.3	43.1
4-5 AM	364	0.0	1500	364	0	0.52	0	70.2	56.0	44.0
5-6 AM	470	0.0	1500	470	0	0.53	0	70.2	55.8	43.6
6-7 AM	895	0.0	1500	895	0	0.58	0	69.6	54.5	42.0
7-8 AM	1102	0.0	1499	1102	0	0.63	0	69.4	53.2	40.4
8-9 AM	1498	0.0	1499	1498	0	1.48	15	68.9	40.3	32.2
9-10 AM	2113	0.0	OFF	2113	0	0.01	0	68.1	67.9	67.9
10-11 AM	2892	0.0	OFF	2892	0	0.00	0	67.1	67.1	67.1
11AM-NOON	3512	0.0	OFF	3512	0	0.00	0	66.4	66.4	66.4
NOON-1PM	3838	0.0	OFF	3838	0	0.00	0	64.6	64.6	64.6
1-2 PM	3740	0.0	OFF	3740	0	0.00	0	65.3	65.3	65.3
2-3 PM	3788	0.0	OFF	3788	0	0.00	0	65.0	65.0	65.0
3-4 PM	3731	0.0	OFF	3731	0	0.00	0	65.4	65.4	65.4
4-5 PM	3598	0.0	OFF	3598	0	0.00	0	66.3	66.3	66.3
5-6 PM	3227	0.0	OFF	3227	0	0.00	0	66.7	66.7	66.7
6-7 PM	2876	0.0	OFF	2876	0	0.00	0	67.1	67.1	67.1
7-8 PM	2380	0.0	1499	1924	456	12.99+	323	67.8	9.7	31.5
8-9 PM	1776	0.0	1499	1499	276	16.55+	404	68.5	8.1	30.8
9-10 PM	1675	0.0	1499	1492	183	16.53+	404	68.7	8.1	30.8
10-11 PM	1411	0.0	1499	1393	18	15.37+	375	69.0	8.5	30.8
11PM-MID	1047	0.0	1499	1047	0	2.51	101	69.4	31.4	38.7

"OFF" INDICATES NO ROAD WORK (ALL LANES OPEN TO TRAFFIC)

+ INDICATES QUEUEING EXCEEDS USER-SPECIFIED MAXIMUM LIMIT

BREAKDOWN DURATION (MINS)	0
RANGE OF QUEUE DELAY - MIN (VEH-H) MAX	0.0
AV BREAKDOWNS PER DAY	0.00
AV QUEUE DELAY/DAY (VEH-H)	0.0
AV TOTAL DELAY/DAY (VEH-H)	0.0

BREAKDOWN DURATION (MINS)	0
RANGE OF QUEUE DELAY - MIN (VEH-H) MAX	0
AV BREAKDOWNS PER DAY	0
AV QUEUE DELAY/DAY (VEH-H)	0
AV TOTAL DELAY/DAY (VEH-H)	0

MAIN ROUTE WITHOUT WORKS	0.0193
MAIN ROUTE WITH WORKS	0.0178
'DIVERSION'	0.0008
<small>PIA: Personal Injury Accidents</small>	
IMPACTS ON ROAD USERS	
ROAD USER COSTS PER DAY	\$31,693
CONGESTED HOURS PER DAY*	4

*Delays Exceeding User-Specified Maximum

**IH 94: STH 181 TO USH 41 (MILWAUKEE COUNTY)
NIGHTTIME 2 LANE CLOSURE
NO DIVERSION ROUTE (MAX QUEUE METHOD)**

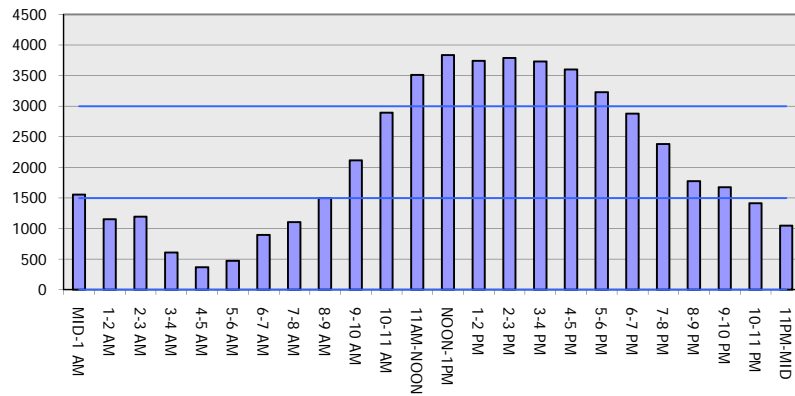
OCTOBER

Analyzed for 2009
Construction Season

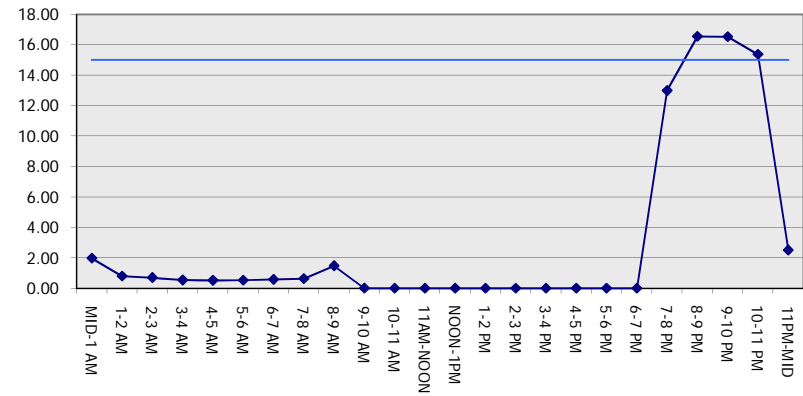
GRAPHICAL REPRESENTATION OF TRAFFIC MODEL INPUT AND OUTPUT

SUNDAY WESTBOUND DIRECTION

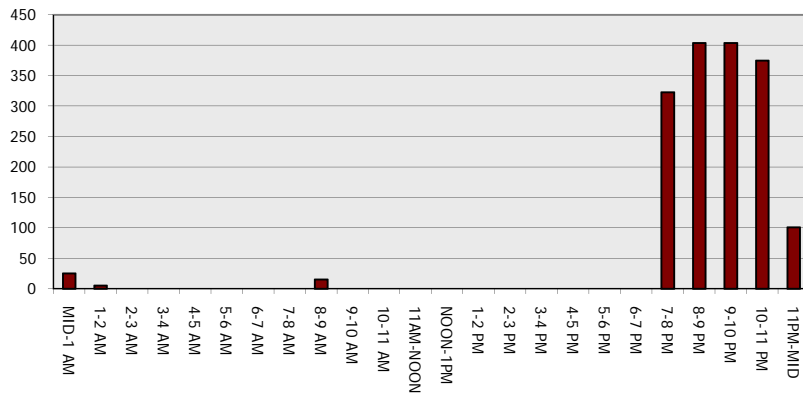
Main Route - Traffic Demand (Vehicles Per Hour)



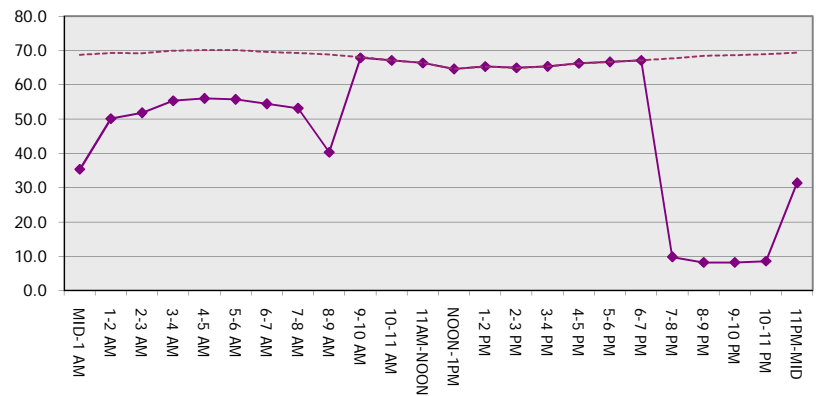
Main Route Average Delay Per Vehicle (Minutes)



Main Route - Average Queue Length (Vehicles)



Main Route - Average Speed (MPH)



IH 94: STH 181 TO USH 41 (MILWAUKEE COUNTY) NIGHTTIME 2 LANE CLOSURE NO DIVERSION ROUTE (MAX QUEUE METHOD)	OCTOBER
	Analyzed for 2009 Construction Season

SUMMARY OF TRAFFIC MODEL OUTPUT

SUNDAY EASTBOUND DIRECTION

TIME OF DAY	FLOWS AND CAPACITY IN VEH/HR							AVERAGE SPEEDS IN MPH		
	MAIN ROUTE		SITE CAPA CITY	FLOW		AV.DEL PER VEH (MINS)	AVERAGE QUEUE (VEH)	MAIN ROUTE		SITE
	DEMAND FLOW	PCT HEAVY		MAIN ROUTE	'DIVER TED'			WITHOUT WORK ZONE	WITH WORK ZONE	
MID-1 AM	1293	0.0	1500	1293	0	0.83	0	69.1	49.4	35.7
1-2 AM	744	0.0	1500	744	0	0.56	0	69.8	54.9	42.6
2-3 AM	586	0.0	1500	586	0	0.54	0	70.0	55.4	43.2
3-4 AM	343	0.0	1500	343	0	0.51	0	70.2	56.1	44.1
4-5 AM	272	0.0	1500	272	0	0.51	0	70.2	56.3	44.4
5-6 AM	457	0.0	1500	457	0	0.53	0	70.2	55.8	43.7
6-7 AM	903	0.0	1500	903	0	0.58	0	69.6	54.4	42.0
7-8 AM	1199	0.0	1499	1199	0	0.70	0	69.2	51.7	38.6
8-9 AM	1599	0.0	1499	1599	0	1.86	27	68.7	36.4	31.0
9-10 AM	2165	0.0	OFF	2165	0	0.02	1	68.1	67.4	67.4
10-11 AM	2630	0.0	OFF	2630	0	0.00	0	67.4	67.4	67.4
11AM-NOON	2992	0.0	OFF	2992	0	0.00	0	67.0	67.0	67.0
NOON-1PM	3392	0.0	OFF	3392	0	0.00	0	66.5	66.5	66.5
1-2 PM	3509	0.0	OFF	3509	0	0.00	0	66.4	66.4	66.4
2-3 PM	3412	0.0	OFF	3412	0	0.00	0	66.5	66.5	66.5
3-4 PM	3572	0.0	OFF	3572	0	0.00	0	66.3	66.3	66.3
4-5 PM	3616	0.0	OFF	3616	0	0.00	0	66.1	66.1	66.1
5-6 PM	3633	0.0	OFF	3633	0	0.00	0	66.0	66.0	66.0
6-7 PM	3750	0.0	OFF	3750	0	0.00	0	65.2	65.2	65.2
7-8 PM	2951	0.0	1499	1560	1392	16.79+	419	67.1	8.1	36.6
8-9 PM	2136	0.0	1499	1884	252	12.73+	328	68.1	9.9	30.8
9-10 PM	1881	0.0	1499	1482	399	16.49+	403	68.4	8.1	30.8
10-11 PM	1411	0.0	1499	1366	46	15.07+	367	69.0	8.6	30.8
11PM-MID	1077	0.0	1499	1077	0	2.68	103	69.4	30.2	37.9

"OFF" INDICATES NO ROAD WORK (ALL LANES OPEN TO TRAFFIC)

+ INDICATES QUEUEING EXCEEDS USER-SPECIFIED MAXIMUM LIMIT

----- SITE BREAKDOWN DELAYS -----	
BREAKDOWN DURATION (MINS)	0
RANGE OF QUEUE DELAY - MIN (VEH-H) MAX	0.0
AV BREAKDOWNS PER DAY	0.00
AV QUEUE DELAY/DAY (VEH-H)	0.0
AV TOTAL DELAY/DAY (VEH-H)	0.0

----- SITE ACCIDENT DELAYS -----	
BREAKDOWN DURATION (MINS)	0
RANGE OF QUEUE DELAY - MIN (VEH-H) MAX	0
AV BREAKDOWNS PER DAY	0
AV QUEUE DELAY/DAY (VEH-H)	0
AV TOTAL DELAY/DAY (VEH-H)	0

AVERAGE ACCIDENT NUMBERS (PIA/DAY)	
MAIN ROUTE WITHOUT WORKS	0.0189
MAIN ROUTE WITH WORKS	0.0171
'DIVERSION'	0.0018

PIA: Personal Injury Accidents

ECONOMIC IMPACT ON ROAD USERS	
ROAD USER COSTS PER DAY	\$36,207
CONGESTED HOURS PER DAY*	4

*Delays Exceeding User-Specified Maximum

**IH 94: STH 181 TO USH 41 (MILWAUKEE COUNTY)
 NIGHTTIME 2 LANE CLOSURE
 NO DIVERSION ROUTE (MAX QUEUE METHOD)**

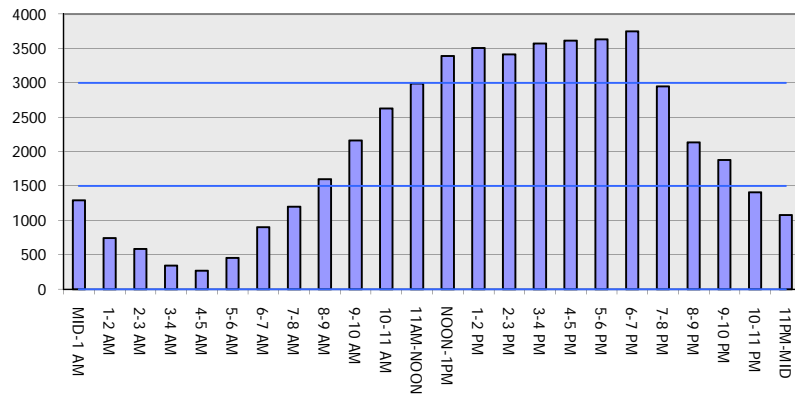
OCTOBER

Analyzed for 2009
 Construction Season

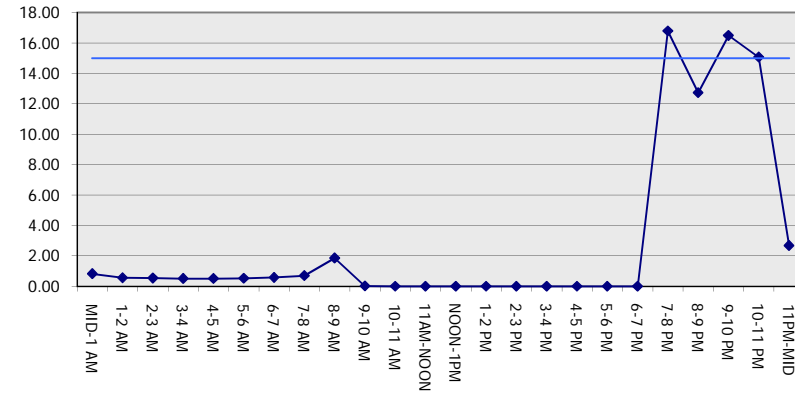
GRAPHICAL REPRESENTATION OF TRAFFIC MODEL INPUT AND OUTPUT

SUNDAY EASTBOUND DIRECTION

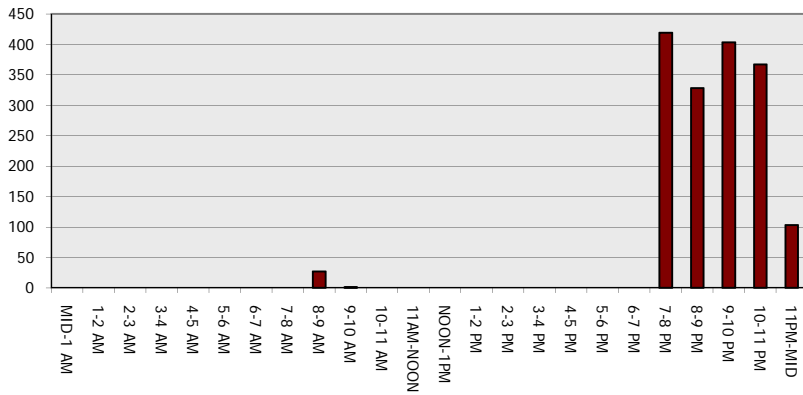
Main Route - Traffic Demand (Vehicles Per Hour)



Main Route Average Delay Per Vehicle (Minutes)



Main Route - Average Queue Length (Vehicles)



Main Route - Average Speed (MPH)

