

**IH 94: STH 181 TO USH 41 (MILWAUKEE COUNTY)
NIGHTTIME 2 LANE CLOSURE
NO DIVERSION ROUTE (MAX QUEUE METHOD)**

OCTOBER

Analyzed for 2009
Construction Season

SUMMARY OF TRAFFIC MODEL OUTPUT

SATURDAY WESTBOUND DIRECTION

TIME OF DAY	FLOWS AND CAPACITY IN VEH/HR						AVERAGE SPEEDS IN MPH				
	MAIN ROUTE		SITE CAPA CITY	FLOW		AV.DEL PER VEH (MINS)	AVERAGE QUEUE (VEH)	MAIN ROUTE		SITE	
	DEMAND FLOW	PCT HEAVY		MAIN ROUTE	'DIVER TED'			WITHOUT WORK ZONE	WITH WORK ZONE		
MID-1 AM	1438	0.0	1500	1438	0	15.54+	378	68.9	8.4	30.8	
1-2 AM	1048	0.0	1499	1048	0	3.04	121	69.4	28.2	37.6	
2-3 AM	986	0.0	1500	986	0	0.59	0	69.5	54.2	41.7	
3-4 AM	615	0.0	1500	615	0	0.55	0	70.0	55.3	43.1	
4-5 AM	586	0.0	1500	586	0	0.54	0	70.0	55.4	43.2	
5-6 AM	935	0.0	1499	935	0	0.58	0	69.6	54.3	41.9	
6-7 AM	1550	0.0	1499	1550	0	1.76	27	68.8	37.3	32.1	
7-8 AM	2312	0.0	1500	1814	498	13.24+	336	67.9	9.6	30.8	
8-9 AM	3007	0.0	OFF	3007	0	0.32	30	67.0	58.3	58.3	
9-10 AM	3390	0.0	OFF	3390	0	0.00	0	66.5	66.5	66.5	
10-11 AM	3679	0.0	OFF	3679	0	0.00	0	65.7	65.7	65.7	
11AM-NOON	4004	0.0	OFF	4004	0	0.00	0	63.5	63.5	63.5	
NOON-1PM	4383	0.0	OFF	4383	0	0.00	0	60.9	60.9	60.9	
1-2 PM	4220	0.0	OFF	4220	0	0.00	0	62.0	62.0	62.0	
2-3 PM	4372	0.0	OFF	4372	0	0.00	0	61.0	61.0	61.0	
3-4 PM	4226	0.0	OFF	4226	0	0.00	0	62.0	62.0	62.0	
4-5 PM	4052	0.0	OFF	4052	0	0.00	0	63.2	63.2	63.2	
5-6 PM	3713	0.0	OFF	3713	0	0.00	0	65.5	65.5	65.5	
6-7 PM	3347	0.0	1499	1560	1787	16.78+	419	66.6	8.1	36.6	
7-8 PM	2769	0.0	1499	1605	1164	14.48+	383	67.3	9.1	35.9	
8-9 PM	2299	0.0	1499	1698	601	14.78+	372	67.9	8.9	32.9	
9-10 PM	2488	0.0	1499	1505	983	16.55+	405	67.6	8.1	30.8	
10-11 PM	3024	0.0	1500	1509	1515	16.58+	407	67.0	8.1	30.8	
11PM-MID	2091	0.0	1500	1501	590	16.55+	405	68.1	8.1	30.8	

"OFF" INDICATES NO ROAD WORK (ALL LANES OPEN TO TRAFFIC)

+ INDICATES QUEUEING EXCEEDS USER-SPECIFIED MAXIMUM LIMIT

----- SITE BREAKDOWN DELAYS -----	
BREAKDOWN DURATION (MINS)	0
RANGE OF QUEUE DELAY - MIN (VEH-H) MAX	0.0
AV BREAKDOWNS PER DAY	0.00
AV QUEUE DELAY/DAY (VEH-H)	0.0
AV TOTAL DELAY/DAY (VEH-H)	0.0

----- SITE ACCIDENT DELAYS -----	
BREAKDOWN DURATION (MINS)	0
RANGE OF QUEUE DELAY - MIN (VEH-H) MAX	0
AV BREAKDOWNS PER DAY	0
AV QUEUE DELAY/DAY (VEH-H)	0
AV TOTAL DELAY/DAY (VEH-H)	0

AVERAGE ACCIDENT NUMBERS (PIA/DAY)	
MAIN ROUTE WITHOUT WORKS	0.0246
MAIN ROUTE WITH WORKS	0.0207
'DIVERSION'	0.0063
PIA: Personal Injury Accidents	
IMPACTS ON ROAD USERS	
ROAD USER COSTS PER DAY	\$80,789
CONGESTED HOURS PER DAY*	8

*Delays Exceeding User-Specified Maximum

**IH 94: STH 181 TO USH 41 (MILWAUKEE COUNTY)
 NIGHTTIME 2 LANE CLOSURE
 NO DIVERSION ROUTE (MAX QUEUE METHOD)**

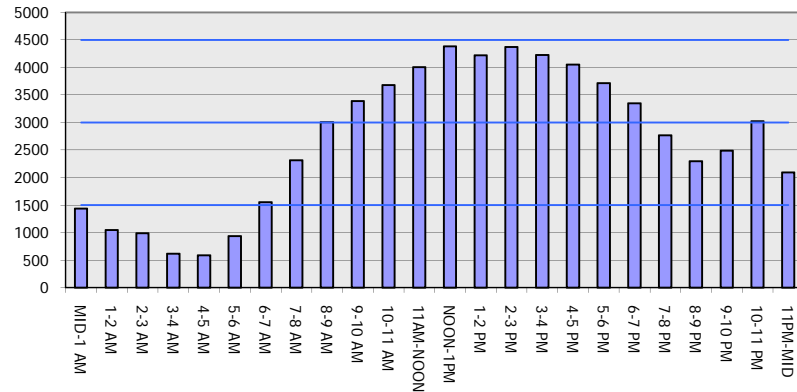
OCTOBER

Analyzed for 2009
 Construction Season

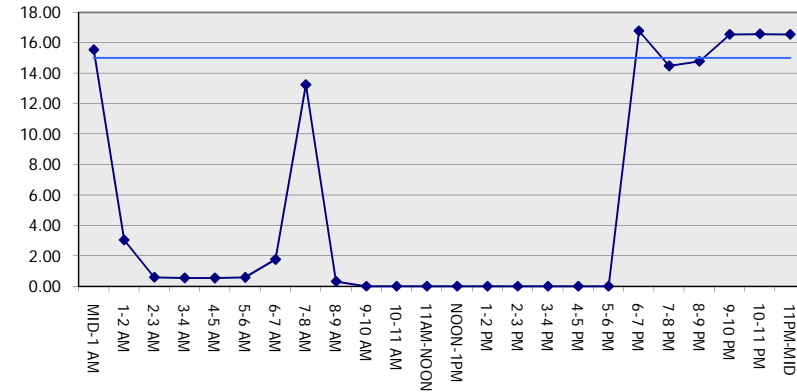
GRAPHICAL REPRESENTATION OF TRAFFIC MODEL INPUT AND OUTPUT

SATURDAY WESTBOUND DIRECTION

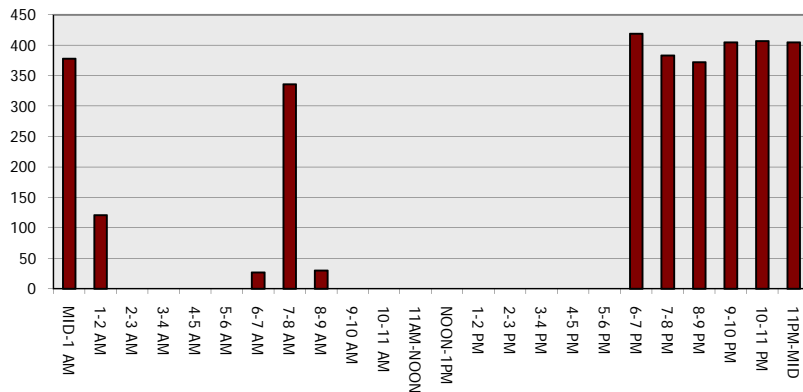
Main Route - Traffic Demand (Vehicles Per Hour)



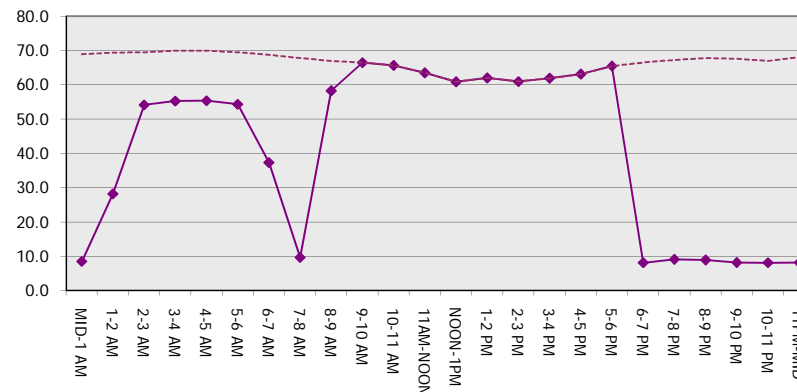
Main Route Average Delay Per Vehicle (Minutes)



Main Route - Average Queue Length (Vehicles)



Main Route - Average Speed (MPH)



IH 94: STH 181 TO USH 41 (MILWAUKEE COUNTY) NIGHTTIME 2 LANE CLOSURE NO DIVERSION ROUTE (MAX QUEUE METHOD)	OCTOBER
	Analyzed for 2009 Construction Season

SUMMARY OF TRAFFIC MODEL OUTPUT

SATURDAY EASTBOUND DIRECTION

TIME OF DAY	FLOWS AND CAPACITY IN VEH/HR							AVERAGE SPEEDS IN MPH			
	MAIN ROUTE		SITE CAPA CITY	FLOW		AV.DEL PER VEH (MINS)	AVERAGE QUEUE (VEH)	MAIN ROUTE		SITE	
	DEMAND FLOW	PCT HEAVY		MAIN ROUTE	'DIVER TED'			WITHOUT WORK ZONE	WITH WORK ZONE		
MID-1 AM	1259	0.0	1500	1259	0	11.58	292	69.2	10.6	32.2	
1-2 AM	606	0.0	1500	606	0	0.74	10	70.0	51.4	43.0	
2-3 AM	653	0.0	1500	653	0	0.55	0	69.9	55.2	42.9	
3-4 AM	347	0.0	1500	347	0	0.51	0	70.2	56.1	44.1	
4-5 AM	399	0.0	1500	399	0	0.52	0	70.2	56.0	43.9	
5-6 AM	780	0.0	1500	780	0	0.56	0	69.7	54.8	42.5	
6-7 AM	1398	0.0	1499	1398	0	1.10	5	69.0	45.1	33.8	
7-8 AM	1956	0.0	1500	1956	0	7.48	214	68.3	15.2	30.8	
8-9 AM	2553	0.0	OFF	2553	0	0.35	33	67.6	58.0	58.0	
9-10 AM	2942	0.0	OFF	2942	0	0.00	0	67.1	67.1	67.1	
10-11 AM	3458	0.0	OFF	3458	0	0.00	0	66.4	66.4	66.4	
11AM-NOON	3968	0.0	OFF	3968	0	0.00	0	63.7	63.7	63.7	
NOON-1PM	4098	0.0	OFF	4098	0	0.00	0	62.8	62.8	62.8	
1-2 PM	4104	0.0	OFF	4104	0	0.00	0	62.8	62.8	62.8	
2-3 PM	4177	0.0	OFF	4177	0	0.00	0	62.3	62.3	62.3	
3-4 PM	4296	0.0	OFF	4296	0	0.00	0	61.5	61.5	61.5	
4-5 PM	4348	0.0	OFF	4348	0	0.00	0	61.2	61.2	61.2	
5-6 PM	4609	0.0	OFF	4609	0	0.00	0	59.4	59.4	59.4	
6-7 PM	4507	0.0	1499	1564	2942	16.66+	423	60.1	8.1	36.6	
7-8 PM	3926	0.0	1499	1778	2149	14.81+	384	64.0	8.8	35.3	
8-9 PM	2940	0.0	1499	1512	1428	16.58+	406	67.1	8.1	30.8	
9-10 PM	2663	0.0	1500	1509	1154	16.57+	406	67.4	8.1	30.8	
10-11 PM	2555	0.0	1500	1506	1049	16.56+	405	67.6	8.1	30.8	
11PM-MID	1995	0.0	1500	1501	494	16.55+	405	68.2	8.1	30.8	

"OFF" INDICATES NO ROAD WORK (ALL LANES OPEN TO TRAFFIC)

+ INDICATES QUEUEING EXCEEDS USER-SPECIFIED MAXIMUM LIMIT

----- SITE BREAKDOWN DELAYS -----	
BREAKDOWN DURATION (MINS)	0
RANGE OF QUEUE DELAY - MIN (VEH-H) MAX	0.0
AV BREAKDOWNS PER DAY	0.00
AV QUEUE DELAY/DAY (VEH-H)	0.0
AV TOTAL DELAY/DAY (VEH-H)	0.0

----- SITE ACCIDENT DELAYS -----	
BREAKDOWN DURATION (MINS)	0
RANGE OF QUEUE DELAY - MIN (VEH-H) MAX	0
AV BREAKDOWNS PER DAY	0
AV QUEUE DELAY/DAY (VEH-H)	0
AV TOTAL DELAY/DAY (VEH-H)	0

AVERAGE ACCIDENT NUMBERS (PIA/DAY)	
MAIN ROUTE WITHOUT WORKS	0.0246
MAIN ROUTE WITH WORKS	0.0200
'DIVERSION'	0.0081

PIA: Personal Injury Accidents

ECONOMIC IMPACT ON ROAD USERS	
ROAD USER COSTS PER DAY	\$85,093
CONGESTED HOURS PER DAY*	6

*Delays Exceeding User-Specified Maximum

**IH 94: STH 181 TO USH 41 (MILWAUKEE COUNTY)
NIGHTTIME 2 LANE CLOSURE
NO DIVERSION ROUTE (MAX QUEUE METHOD)**

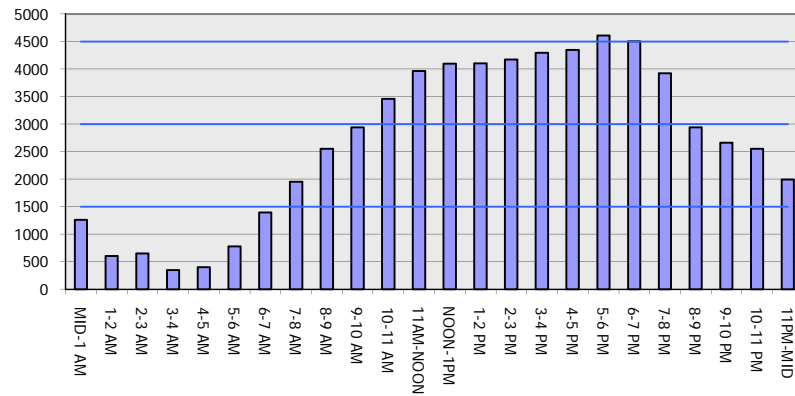
OCTOBER

Analyzed for 2009
Construction Season

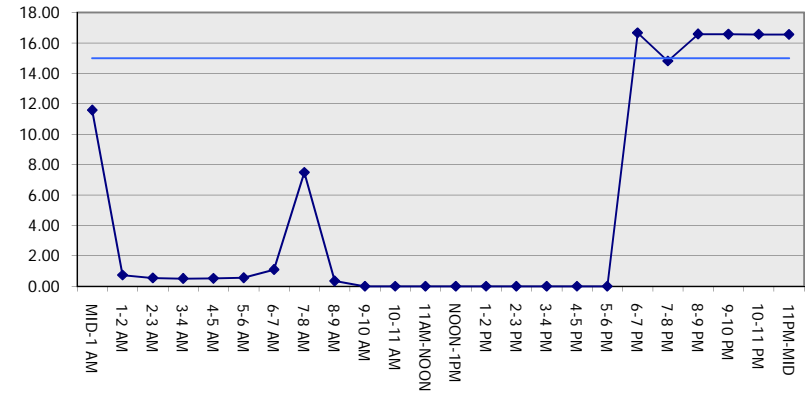
GRAPHICAL REPRESENTATION OF TRAFFIC MODEL INPUT AND OUTPUT

SATURDAY EASTBOUND DIRECTION

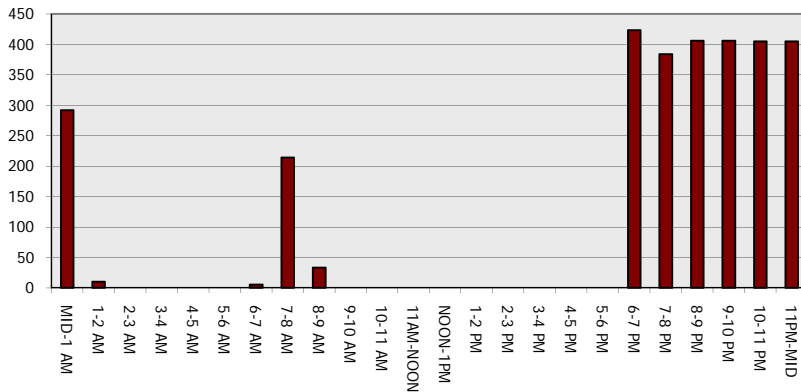
Main Route - Traffic Demand (Vehicles Per Hour)



Main Route Average Delay Per Vehicle (Minutes)



Main Route - Average Queue Length (Vehicles)



Main Route - Average Speed (MPH)

