

**IH 94: STH 181 TO USH 41 (MILWAUKEE COUNTY)
NIGHTTIME CLOSURE
NO DIVERSION ROUTE (MAX QUEUE METHOD)**

OCTOBER
Analyzed for 2009
Construction Season

SUMMARY OF TRAFFIC MODEL OUTPUT
SATURDAY WESTBOUND DIRECTION

TIME OF DAY	FLOWS AND CAPACITY IN VEH/HR						AVERAGE SPEEDS IN MPH				
	MAIN ROUTE		SITE CAPA CITY	FLOW		AV.DEL PER VEH (MINS)	AVERAGE QUEUE (VEH)	MAIN ROUTE		SITE	
	DEMAND FLOW	PCT HEAVY		MAIN ROUTE	'DIVER TED'			WITHOUT WORK ZONE	WITH WORK ZONE		
MID-1 AM	1438	0.0	3000	1438	0	0.34	0	68.9	59.2	49.7	
1-2 AM	1048	0.0	3000	1048	0	0.35	0	69.4	59.4	49.7	
2-3 AM	986	0.0	3000	986	0	0.35	0	69.5	59.4	49.7	
3-4 AM	615	0.0	3000	615	0	0.36	0	70.0	59.6	49.7	
4-5 AM	586	0.0	3000	586	0	0.36	0	70.0	59.6	49.7	
5-6 AM	935	0.0	3000	935	0	0.35	0	69.6	59.4	49.7	
6-7 AM	1550	0.0	3000	1550	0	0.34	0	68.8	59.1	49.7	
7-8 AM	2312	0.0	2999	2312	0	0.36	0	67.9	57.9	48.3	
8-9 AM	3007	0.0	OFF	3007	0	0.00	0	67.0	67.0	67.0	
9-10 AM	3390	0.0	OFF	3390	0	0.00	0	66.5	66.5	66.5	
10-11 AM	3679	0.0	OFF	3679	0	0.00	0	65.7	65.7	65.7	
11AM-NOON	4004	0.0	OFF	4004	0	0.00	0	63.5	63.5	63.5	
NOON-1PM	4383	0.0	OFF	4383	0	0.00	0	60.9	60.9	60.9	
1-2 PM	4220	0.0	OFF	4220	0	0.00	0	62.0	62.0	62.0	
2-3 PM	4372	0.0	OFF	4372	0	0.00	0	61.0	61.0	61.0	
3-4 PM	4226	0.0	OFF	4226	0	0.00	0	62.0	62.0	62.0	
4-5 PM	4052	0.0	OFF	4052	0	0.00	0	63.2	63.2	63.2	
5-6 PM	3713	0.0	OFF	3713	0	0.00	0	65.5	65.5	65.5	
6-7 PM	3347	0.0	2999	3347	0	4.02	202	66.6	23.3	37.3	
7-8 PM	2769	0.0	2999	2769	0	5.30	263	67.3	19.3	38.0	
8-9 PM	2299	0.0	3000	2299	0	0.46	10	67.9	55.7	49.5	
9-10 PM	2488	0.0	2999	2488	0	0.39	0	67.6	57.1	47.2	
10-11 PM	3024	0.0	2999	3024	0	1.17	24	67.0	43.3	37.3	
11PM-MID	2091	0.0	3000	2091	0	0.34	0	68.1	58.7	49.7	

"OFF" INDICATES NO ROAD WORK (ALL LANES OPEN TO TRAFFIC)

----- SITE BREAKDOWN DELAYS -----	
BREAKDOWN DURATION (MINS)	0
RANGE OF QUEUE DELAY - MIN (VEH-H) MAX	0.0
AV BREAKDOWNS PER DAY	0.00
AV QUEUE DELAY/DAY (VEH-H)	0.0
AV TOTAL DELAY/DAY (VEH-H)	0.0

----- SITE ACCIDENT DELAYS -----	
BREAKDOWN DURATION (MINS)	0
RANGE OF QUEUE DELAY - MIN (VEH-H) MAX	0
AV BREAKDOWNS PER DAY	0
AV QUEUE DELAY/DAY (VEH-H)	0
AV TOTAL DELAY/DAY (VEH-H)	0

AVERAGE ACCIDENT NUMBERS (PIA/DAY)	
MAIN ROUTE WITHOUT WORKS	0.0246
MAIN ROUTE WITH WORKS	0.0229
'DIVERSION'	0.0000
PIA: Personal Injury Accidents	
IMPACTS ON ROAD USERS	
ROAD USER COSTS PER DAY	\$10,230
CONGESTED HOURS PER DAY*	0

*Delays Exceeding User-Specified Maximum

IH 94: STH 181 TO USH 41 (MILWAUKEE COUNTY)
NIGHTTIME CLOSURE
NO DIVERSION ROUTE (MAX QUEUE METHOD)

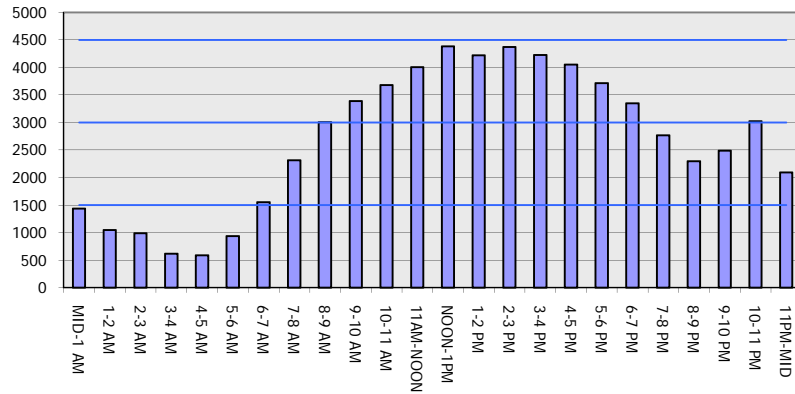
OCTOBER

Analyzed for 2009
 Construction Season

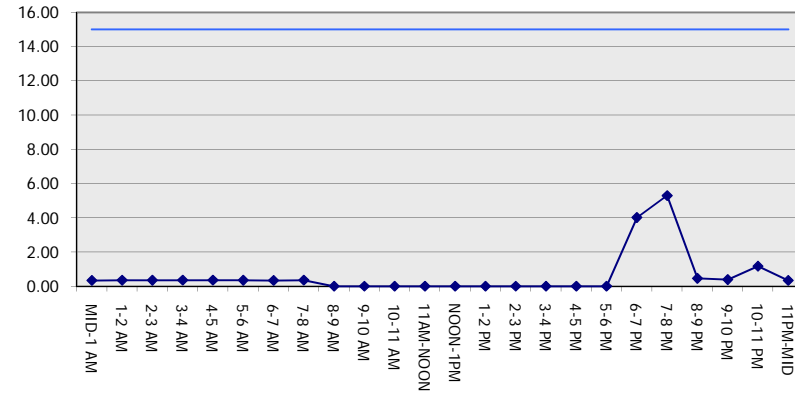
GRAPHICAL REPRESENTATION OF TRAFFIC MODEL INPUT AND OUTPUT

SATURDAY WESTBOUND DIRECTION

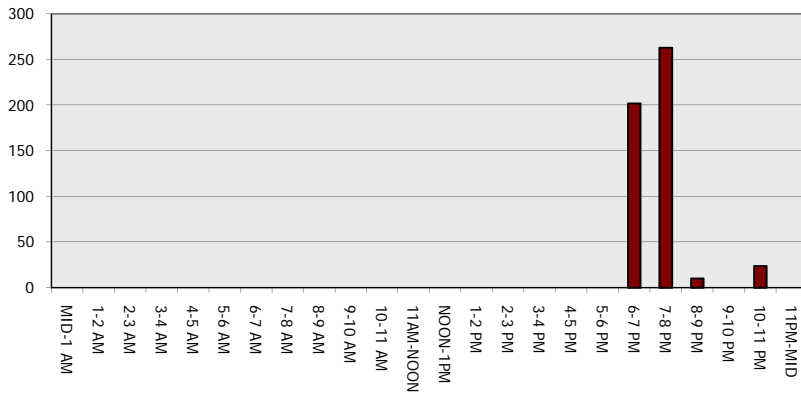
Main Route - Traffic Demand (Vehicles Per Hour)



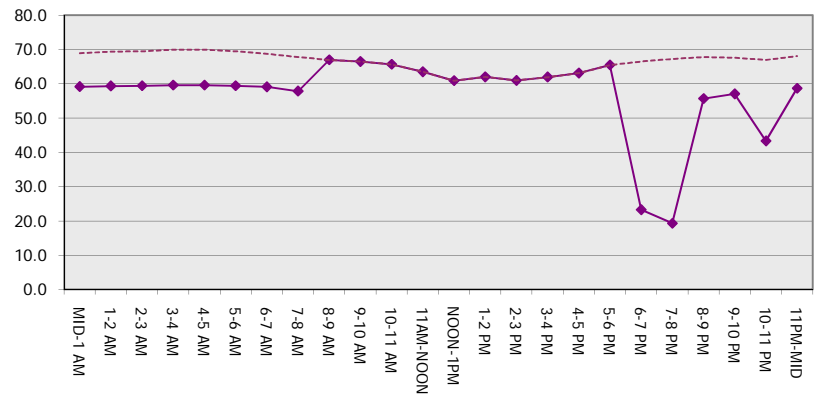
Main Route Average Delay Per Vehicle (Minutes)



Main Route - Average Queue Length (Vehicles)



Main Route - Average Speed (MPH)



IH 94: STH 181 TO USH 41 (MILWAUKEE COUNTY) NIGHTTIME CLOSURE NO DIVERSION ROUTE (MAX QUEUE METHOD)	OCTOBER
	Analyzed for 2009 Construction Season

SUMMARY OF TRAFFIC MODEL OUTPUT

SATURDAY EASTBOUND DIRECTION

TIME OF DAY	FLOWS AND CAPACITY IN VEH/HR							AVERAGE SPEEDS IN MPH		
	MAIN ROUTE		SITE CAPA CITY	FLOW		AV.DEL PER VEH (MINS)	AVERAGE QUEUE (VEH)	MAIN ROUTE		SITE
	DEMAND FLOW	PCT HEAVY		MAIN ROUTE	'DIVER TED'			WITHOUT WORK ZONE	WITH WORK ZONE	
MID-1 AM	1259	0.0	3000	1259	0	0.35	0	69.2	59.3	49.7
1-2 AM	606	0.0	3000	606	0	0.36	0	70.0	59.6	49.7
2-3 AM	653	0.0	3000	653	0	0.36	0	69.9	59.6	49.7
3-4 AM	347	0.0	3000	347	0	0.36	0	70.2	59.7	49.7
4-5 AM	399	0.0	3000	399	0	0.36	0	70.2	59.7	49.7
5-6 AM	780	0.0	3000	780	0	0.35	0	69.7	59.6	49.7
6-7 AM	1398	0.0	3000	1398	0	0.34	0	69.0	59.2	49.7
7-8 AM	1956	0.0	3000	1956	0	0.34	0	68.3	58.9	49.7
8-9 AM	2553	0.0	OFF	2553	0	0.00	0	67.6	67.6	67.6
9-10 AM	2942	0.0	OFF	2942	0	0.00	0	67.1	67.1	67.1
10-11 AM	3458	0.0	OFF	3458	0	0.00	0	66.4	66.4	66.4
11AM-NOON	3968	0.0	OFF	3968	0	0.00	0	63.7	63.7	63.7
NOON-1PM	4098	0.0	OFF	4098	0	0.00	0	62.8	62.8	62.8
1-2 PM	4104	0.0	OFF	4104	0	0.00	0	62.8	62.8	62.8
2-3 PM	4177	0.0	OFF	4177	0	0.00	0	62.3	62.3	62.3
3-4 PM	4296	0.0	OFF	4296	0	0.00	0	61.5	61.5	61.5
4-5 PM	4348	0.0	OFF	4348	0	0.00	0	61.2	61.2	61.2
5-6 PM	4609	0.0	OFF	4609	0	0.00	0	59.4	59.4	59.4
6-7 PM	4507	0.0	2999	3902	605	11.37+	651	60.1	12.7	37.3
7-8 PM	3926	0.0	3000	2982	944	16.61+	883	64.0	10.6	37.3
8-9 PM	2940	0.0	3000	2889	51	16.16+	850	67.1	10.8	37.3
9-10 PM	2663	0.0	2999	2663	0	11.80+	616	67.4	12.4	37.3
10-11 PM	2555	0.0	3000	2555	0	4.07	234	67.6	23.3	40.1
11PM-MID	1995	0.0	3000	1995	0	0.33	0	68.2	58.9	49.7

"OFF" INDICATES NO ROAD WORK (ALL LANES OPEN TO TRAFFIC)

+ INDICATES QUEUEING EXCEEDS USER-SPECIFIED MAXIMUM LIMIT

BREAKDOWN DURATION (MINS)	0
RANGE OF QUEUE DELAY - MIN (VEH-H) MAX	0.0
AV BREAKDOWNS PER DAY	0.00
AV QUEUE DELAY/DAY (VEH-H)	0.0
AV TOTAL DELAY/DAY (VEH-H)	0.0

BREAKDOWN DURATION (MINS)	0
RANGE OF QUEUE DELAY - MIN (VEH-H) MAX	0
AV BREAKDOWNS PER DAY	0
AV QUEUE DELAY/DAY (VEH-H)	0
AV TOTAL DELAY/DAY (VEH-H)	0

MAIN ROUTE WITHOUT WORKS	0.0246
MAIN ROUTE WITH WORKS	0.0224
'DIVERSION'	0.0014

PIA: Personal Injury Accidents

ROAD USER COSTS PER DAY	\$56,679
CONGESTED HOURS PER DAY*	4

*Delays Exceeding User-Specified Maximum

**IH 94: STH 181 TO USH 41 (MILWAUKEE COUNTY)
NIGHTTIME CLOSURE
NO DIVERSION ROUTE (MAX QUEUE METHOD)**

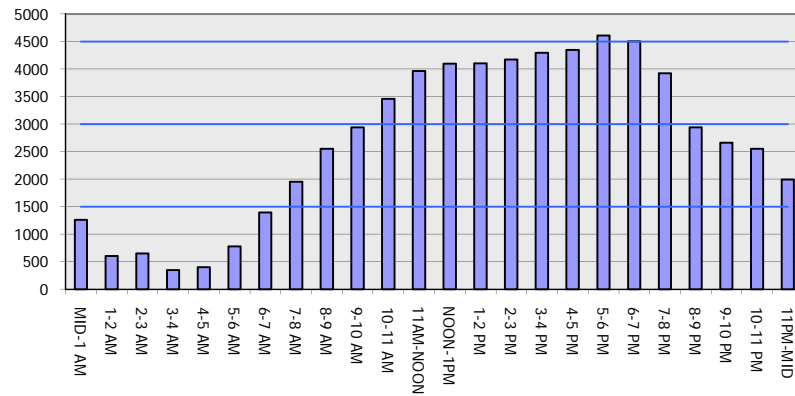
OCTOBER

Analyzed for 2009
Construction Season

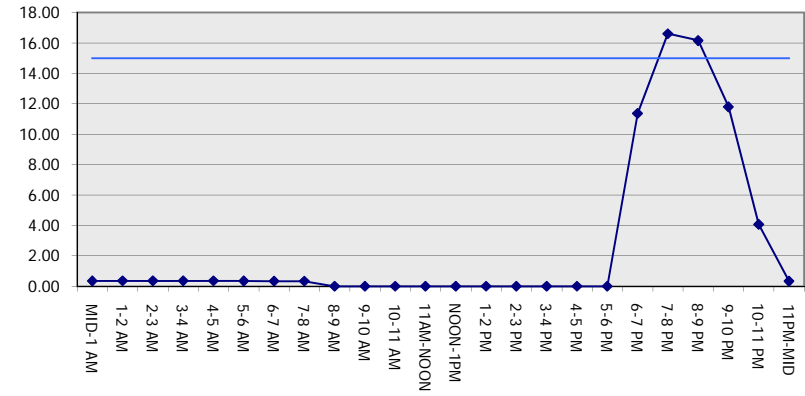
GRAPHICAL REPRESENTATION OF TRAFFIC MODEL INPUT AND OUTPUT

SATURDAY EASTBOUND DIRECTION

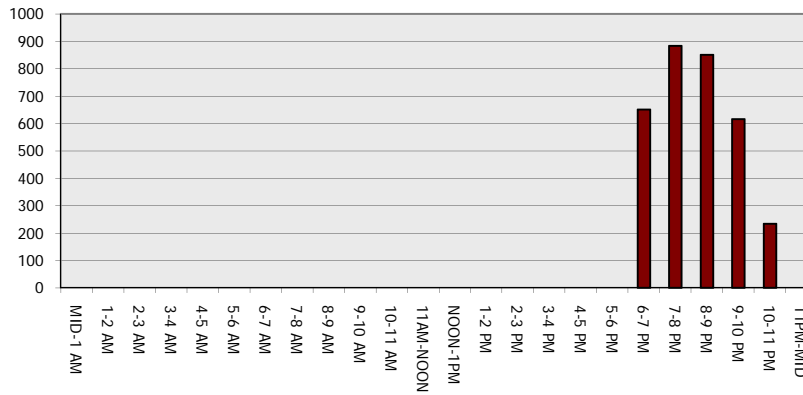
Main Route - Traffic Demand (Vehicles Per Hour)



Main Route Average Delay Per Vehicle (Minutes)



Main Route - Average Queue Length (Vehicles)



Main Route - Average Speed (MPH)

