

IH 94: STH 181 TO USH 41 (MILWAUKEE COUNTY) NIGHTTIME CLOSURE NO DIVERSION ROUTE (MAX QUEUE METHOD)	OCTOBER
	Analyzed for 2009 Construction Season

SUMMARY OF TRAFFIC MODEL OUTPUT

MON-THUR WESTBOUND DIRECTION

TIME OF DAY	FLOWS AND CAPACITY IN VEH/HR						AVERAGE SPEEDS IN MPH			
	MAIN ROUTE		SITE CAPA CITY	FLOW		AV.DEL PER VEH (MINS)	AVERAGE QUEUE (VEH)	MAIN ROUTE		SITE
	DEMAND FLOW	PCT HEAVY		MAIN ROUTE	'DIVER TED'			WITHOUT WORK ZONE	WITH WORK ZONE	
MID-1 AM	662	0.0	3000	662	0	0.36	0	69.9	59.6	49.7
1-2 AM	419	0.0	3000	419	0	0.36	0	70.2	59.7	49.7
2-3 AM	332	0.0	3000	332	0	0.36	0	70.2	59.7	49.7
3-4 AM	383	0.0	3000	383	0	0.36	0	70.2	59.7	49.7
4-5 AM	710	0.0	3000	710	0	0.36	0	69.9	59.6	49.7
5-6 AM	2179	0.0	OFF	2179	0	0.00	0	68.0	68.0	68.0
6-7 AM	4398	0.0	OFF	4398	0	0.00	0	60.8	60.8	60.8
7-8 AM	5803	0.0	OFF	5803	0	0.00	0	51.2	51.2	51.2
8-9 AM	4964	0.0	OFF	4964	0	0.00	0	56.9	56.9	56.9
9-10 AM	3791	0.0	OFF	3791	0	0.00	0	65.0	65.0	65.0
10-11 AM	3677	0.0	OFF	3677	0	0.00	0	65.8	65.8	65.8
11AM-NOON	4109	0.0	OFF	4109	0	0.00	0	62.8	62.8	62.8
NOON-1PM	4390	0.0	OFF	4390	0	0.00	0	60.9	60.9	60.9
1-2 PM	4636	0.0	OFF	4636	0	0.00	0	59.2	59.2	59.2
2-3 PM	5724	0.0	OFF	5724	0	0.00	0	51.7	51.7	51.7
3-4 PM	6293	0.0	OFF	6293	0	0.00	0	47.9	47.9	47.9
4-5 PM	5721	0.0	OFF	5721	0	0.00	0	51.8	51.8	51.8
5-6 PM	5476	0.0	OFF	5476	0	0.00	0	53.5	53.5	53.5
6-7 PM	4916	0.0	OFF	4916	0	0.00	0	57.3	57.3	57.3
7-8 PM	3455	0.0	2999	3455	0	5.53	292	66.4	19.1	37.3
8-9 PM	2838	0.0	2999	2838	0	8.03	404	67.2	14.8	37.3
9-10 PM	2456	0.0	2999	2456	0	1.53	100	67.7	39.4	44.7
10-11 PM	1804	0.0	3000	1804	0	0.34	0	68.5	59.0	49.7
11PM-MID	1259	0.0	3000	1259	0	0.35	0	69.2	59.3	49.7

"OFF" INDICATES NO ROAD WORK (ALL LANES OPEN TO TRAFFIC)

----- SITE BREAKDOWN DELAYS -----	
BREAKDOWN DURATION (MINS)	0
RANGE OF QUEUE DELAY - MIN (VEH-H) MAX	0.0
AV BREAKDOWNS PER DAY	0.00
AV QUEUE DELAY/DAY (VEH-H)	0.0
AV TOTAL DELAY/DAY (VEH-H)	0.0

----- SITE ACCIDENT DELAYS -----	
BREAKDOWN DURATION (MINS)	0
RANGE OF QUEUE DELAY - MIN (VEH-H) MAX	0
AV BREAKDOWNS PER DAY	0
AV QUEUE DELAY/DAY (VEH-H)	0
AV TOTAL DELAY/DAY (VEH-H)	0

AVERAGE ACCIDENT NUMBERS (PIA/DAY)	
MAIN ROUTE WITHOUT WORKS	0.0307
MAIN ROUTE WITH WORKS	0.0297
'DIVERSION'	0.0000
<small>PIA: Personal Injury Accidents</small>	
IMPACTS ON ROAD USERS	
ROAD USER COSTS PER DAY	\$11,515
CONGESTED HOURS PER DAY*	0

*Delays Exceeding User-Specified Maximum

**IH 94: STH 181 TO USH 41 (MILWAUKEE COUNTY)
NIGHTTIME CLOSURE
NO DIVERSION ROUTE (MAX QUEUE METHOD)**

OCTOBER

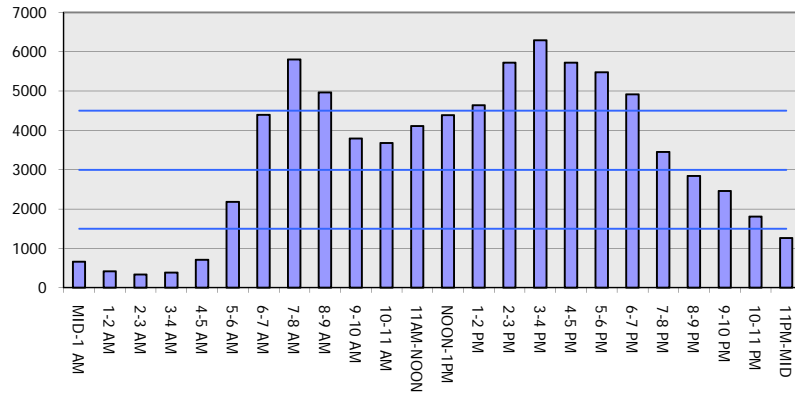
Analyzed for 2009
Construction Season

GRAPHICAL REPRESENTATION OF TRAFFIC MODEL INPUT AND OUTPUT

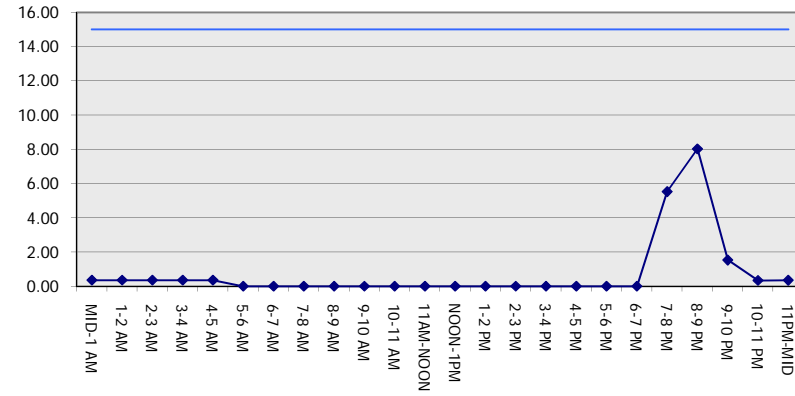
MON-THUR

WESTBOUND DIRECTION

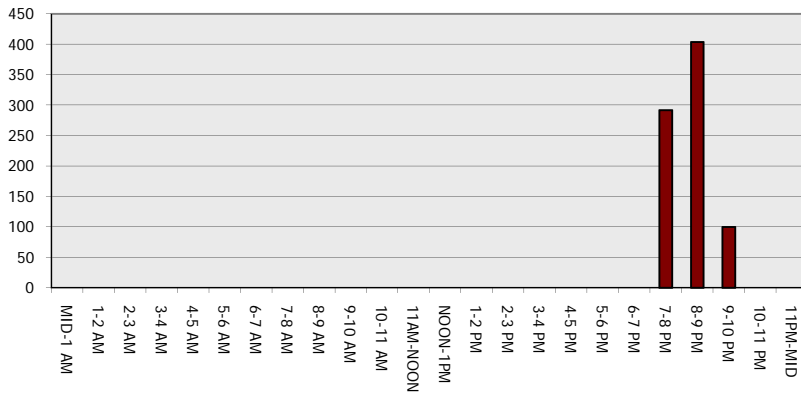
Main Route - Traffic Demand (Vehicles Per Hour)



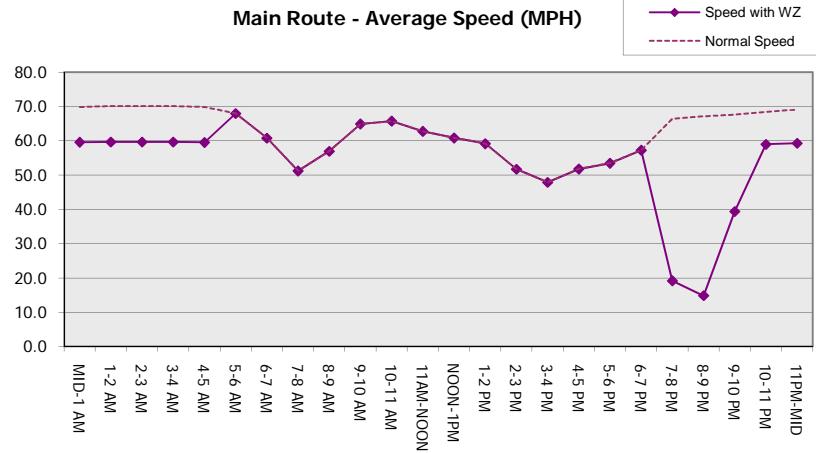
Main Route Average Delay Per Vehicle (Minutes)



Main Route - Average Queue Length (Vehicles)



Main Route - Average Speed (MPH)



IH 94: STH 181 TO USH 41 (MILWAUKEE COUNTY) NIGHTTIME CLOSURE NO DIVERSION ROUTE (MAX QUEUE METHOD)	OCTOBER
	Analyzed for 2009 Construction Season

SUMMARY OF TRAFFIC MODEL OUTPUT

MON-THUR EASTBOUND DIRECTION

TIME OF DAY	FLOWS AND CAPACITY IN VEH/HR							AVERAGE SPEEDS IN MPH		
	MAIN ROUTE		SITE CAPA CITY	FLOW		AV.DEL PER VEH (MINS)	AVERAGE QUEUE (VEH)	MAIN ROUTE		SITE
	DEMAND FLOW	PCT HEAVY		MAIN ROUTE	'DIVER TED'			WITHOUT WORK ZONE	WITH WORK ZONE	
MID-1 AM	576	0.0	3000	576	0	0.36	0	70.0	59.6	49.7
1-2 AM	354	0.0	3000	354	0	0.36	0	70.2	59.7	49.7
2-3 AM	314	0.0	3000	314	0	0.36	0	70.2	59.7	49.7
3-4 AM	360	0.0	3000	360	0	0.36	0	70.2	59.7	49.7
4-5 AM	582	0.0	3000	582	0	0.36	0	70.0	59.6	49.7
5-6 AM	2208	0.0	OFF	2208	0	0.00	0	68.0	68.0	68.0
6-7 AM	5229	0.0	OFF	5229	0	0.00	0	55.1	55.1	55.1
7-8 AM	5735	0.0	OFF	5735	0	0.00	0	51.7	51.7	51.7
8-9 AM	5010	0.0	OFF	5010	0	0.00	0	56.6	56.6	56.6
9-10 AM	4378	0.0	OFF	4378	0	0.00	0	60.9	60.9	60.9
10-11 AM	3789	0.0	OFF	3789	0	0.00	0	65.0	65.0	65.0
11AM-NOON	3997	0.0	OFF	3997	0	0.00	0	63.5	63.5	63.5
NOON-1PM	4115	0.0	OFF	4115	0	0.00	0	62.7	62.7	62.7
1-2 PM	4154	0.0	OFF	4154	0	0.00	0	62.5	62.5	62.5
2-3 PM	4688	0.0	OFF	4688	0	0.00	0	58.8	58.8	58.8
3-4 PM	5043	0.0	OFF	5043	0	0.00	0	56.4	56.4	56.4
4-5 PM	5029	0.0	OFF	5029	0	0.00	0	56.5	56.5	56.5
5-6 PM	5160	0.0	OFF	5160	0	0.00	0	55.6	55.6	55.6
6-7 PM	4476	0.0	OFF	4476	0	0.00	0	60.3	60.3	60.3
7-8 PM	3443	0.0	2999	3443	0	5.16	272	66.4	19.9	37.3
8-9 PM	2845	0.0	2999	2845	0	7.76	389	67.2	15.1	37.3
9-10 PM	2688	0.0	3000	2688	0	3.03	160	67.4	27.8	39.6
10-11 PM	1957	0.0	3000	1957	0	0.34	0	68.3	58.9	49.7
11PM-MID	1257	0.0	3000	1257	0	0.35	0	69.2	59.3	49.7

"OFF" INDICATES NO ROAD WORK (ALL LANES OPEN TO TRAFFIC)

----- SITE BREAKDOWN DELAYS -----	
BREAKDOWN DURATION (MINS)	0
RANGE OF QUEUE DELAY - MIN (VEH-H) MAX	0.0
AV BREAKDOWNS PER DAY	0.00
AV QUEUE DELAY/DAY (VEH-H)	0.0
AV TOTAL DELAY/DAY (VEH-H)	0.0

----- SITE ACCIDENT DELAYS -----	
BREAKDOWN DURATION (MINS)	0
RANGE OF QUEUE DELAY - MIN (VEH-H) MAX	0
AV BREAKDOWNS PER DAY	0
AV QUEUE DELAY/DAY (VEH-H)	0
AV TOTAL DELAY/DAY (VEH-H)	0

AVERAGE ACCIDENT NUMBERS (PIA/DAY)	
MAIN ROUTE WITHOUT WORKS	0.0295
MAIN ROUTE WITH WORKS	0.0286
'DIVERSION'	0.0000

PIA: Personal Injury Accidents

ECONOMIC IMPACT ON ROAD USERS	
ROAD USER COSTS PER DAY	\$12,064
CONGESTED HOURS PER DAY*	0

*Delays Exceeding User-Specified Maximum

**IH 94: STH 181 TO USH 41 (MILWAUKEE COUNTY)
NIGHTTIME CLOSURE
NO DIVERSION ROUTE (MAX QUEUE METHOD)**

OCTOBER

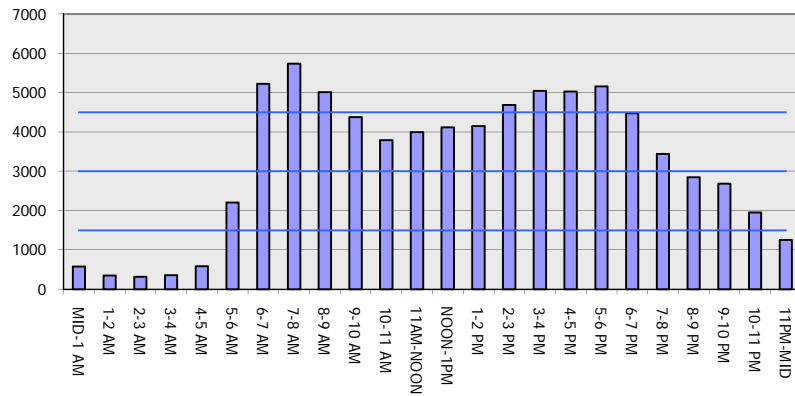
Analyzed for 2009
Construction Season

GRAPHICAL REPRESENTATION OF TRAFFIC MODEL INPUT AND OUTPUT

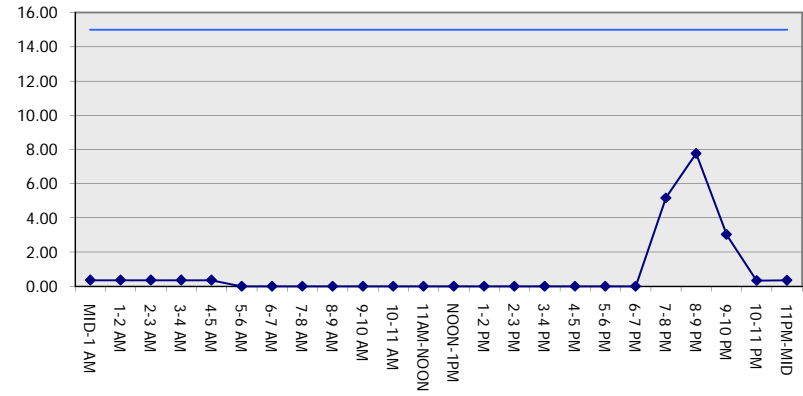
MON-THUR

EASTBOUND DIRECTION

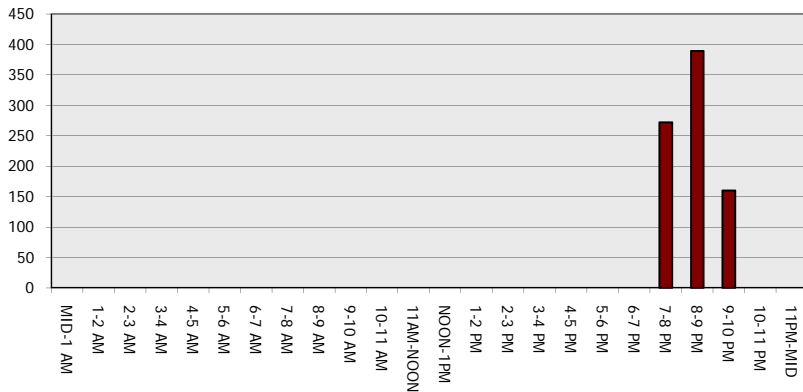
Main Route - Traffic Demand (Vehicles Per Hour)



Main Route Average Delay Per Vehicle (Minutes)



Main Route - Average Queue Length (Vehicles)



Main Route - Average Speed (MPH)

