

**IH 94: STH 181 TO USH 41 (MILWAUKEE COUNTY)  
NIGHTTIME CLOSURE  
NO DIVERSION ROUTE (MAX QUEUE METHOD)**

**AUGUST**  
Analyzed for 2009  
Construction Season

**SUMMARY OF TRAFFIC MODEL OUTPUT**  
SUNDAY WESTBOUND DIRECTION

TIME OF DAY	FLOWS AND CAPACITY IN VEH/HR						AVERAGE SPEEDS IN MPH			
	MAIN ROUTE		SITE CAPA CITY	FLOW		AV.DEL PER VEH (MINS)	AVERAGE QUEUE (VEH)	MAIN ROUTE		SITE
	DEMAND FLOW	PCT HEAVY		MAIN ROUTE	'DIVER TED'			WITHOUT WORK ZONE	WITH WORK ZONE	
MID-1 AM	2150	0.0	3000	2150	0	0.33	0	68.1	58.8	49.7
1-2 AM	1412	0.0	3000	1412	0	0.34	0	69.0	59.2	49.7
2-3 AM	1138	0.0	3000	1138	0	0.35	0	69.3	59.4	49.7
3-4 AM	592	0.0	3000	592	0	0.36	0	70.0	59.6	49.7
4-5 AM	383	0.0	3000	383	0	0.36	0	70.2	59.7	49.7
5-6 AM	455	0.0	3000	455	0	0.36	0	70.2	59.7	49.7
6-7 AM	854	0.0	3000	854	0	0.35	0	69.7	59.5	49.7
7-8 AM	1075	0.0	3000	1075	0	0.35	0	69.4	59.4	49.7
8-9 AM	1391	0.0	3000	1391	0	0.34	0	69.0	59.2	49.7
9-10 AM	2152	0.0	OFF	2152	0	0.00	0	68.1	68.1	68.1
10-11 AM	3009	0.0	OFF	3009	0	0.00	0	67.0	67.0	67.0
11AM-NOON	3471	0.0	OFF	3471	0	0.00	0	66.4	66.4	66.4
NOON-1PM	4010	0.0	OFF	4010	0	0.00	0	63.5	63.5	63.5
1-2 PM	4105	0.0	OFF	4105	0	0.00	0	62.8	62.8	62.8
2-3 PM	4011	0.0	OFF	4011	0	0.00	0	63.5	63.5	63.5
3-4 PM	4306	0.0	OFF	4306	0	0.00	0	61.4	61.4	61.4
4-5 PM	4146	0.0	OFF	4146	0	0.00	0	62.5	62.5	62.5
5-6 PM	3329	0.0	OFF	3329	0	0.00	0	66.6	66.6	66.6
6-7 PM	2954	0.0	OFF	2954	0	0.00	0	67.1	67.1	67.1
7-8 PM	2385	0.0	3000	2385	0	0.33	0	67.8	58.7	49.7
8-9 PM	2083	0.0	3000	2083	0	0.33	0	68.1	58.9	49.7
9-10 PM	1955	0.0	3000	1955	0	0.34	0	68.3	58.9	49.7
10-11 PM	1505	0.0	3000	1505	0	0.34	0	68.9	59.2	49.7
11PM-MID	1258	0.0	3000	1258	0	0.35	0	69.2	59.3	49.7

"OFF" INDICATES NO ROAD WORK (ALL LANES OPEN TO TRAFFIC)

*----- SITE BREAKDOWN DELAYS -----*	
BREAKDOWN DURATION (MINS)	0
RANGE OF QUEUE DELAY - MIN (VEH-H) MAX	0.0
AV BREAKDOWNS PER DAY	0.00
AV QUEUE DELAY/DAY (VEH-H)	0.0
AV TOTAL DELAY/DAY (VEH-H)	0.0

*----- SITE ACCIDENT DELAYS -----*	
BREAKDOWN DURATION (MINS)	0
RANGE OF QUEUE DELAY - MIN (VEH-H) MAX	0
AV BREAKDOWNS PER DAY	0
AV QUEUE DELAY/DAY (VEH-H)	0
AV TOTAL DELAY/DAY (VEH-H)	0

AVERAGE ACCIDENT NUMBERS (PIA/DAY)	
MAIN ROUTE WITHOUT WORKS	0.0207
MAIN ROUTE WITH WORKS	0.0194
'DIVERSION'	0.0000
PIA: Personal Injury Accidents	
IMPACTS ON ROAD USERS	
ROAD USER COSTS PER DAY	\$1,450
CONGESTED HOURS PER DAY*	0

\*Delays Exceeding User-Specified Maximum

**IH 94: STH 181 TO USH 41 (MILWAUKEE COUNTY)**  
**NIGHTTIME CLOSURE**  
**NO DIVERSION ROUTE (MAX QUEUE METHOD)**

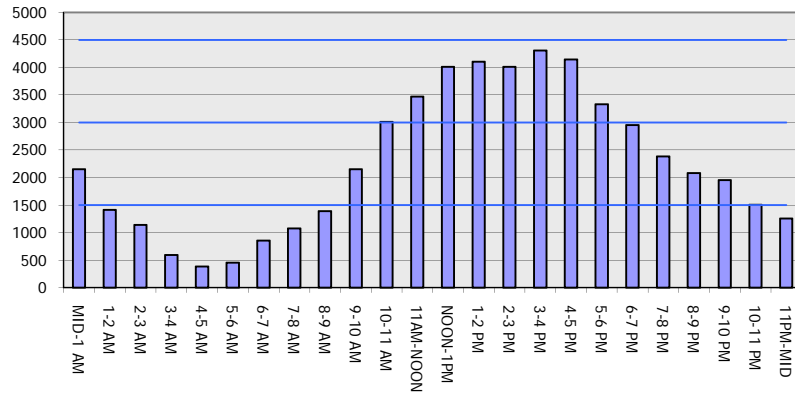
**AUGUST**

Analyzed for 2009  
 Construction Season

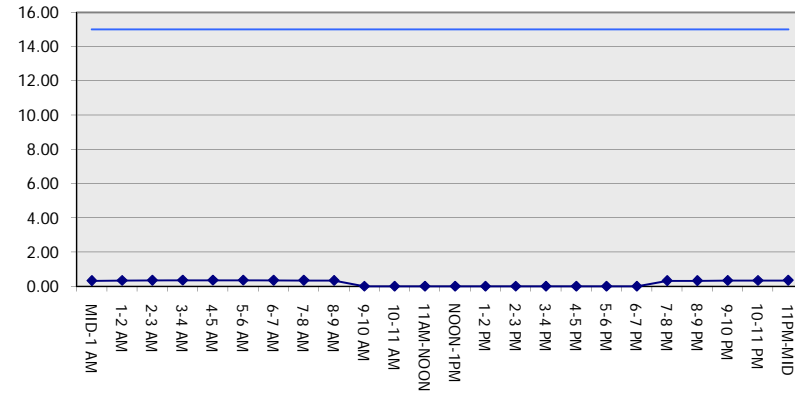
**GRAPHICAL REPRESENTATION OF TRAFFIC MODEL INPUT AND OUTPUT**

**SUNDAY WESTBOUND DIRECTION**

**Main Route - Traffic Demand (Vehicles Per Hour)**



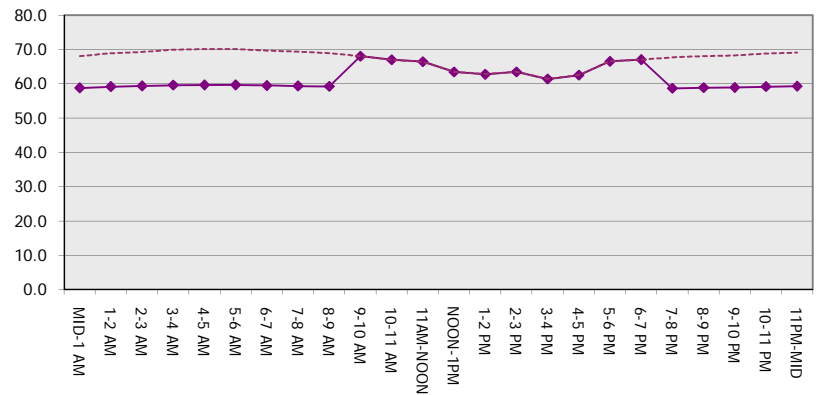
**Main Route Average Delay Per Vehicle (Minutes)**



**Main Route - Average Queue Length (Vehicles)**



**Main Route - Average Speed (MPH)**



<b>IH 94: STH 181 TO USH 41 (MILWAUKEE COUNTY)</b> <b>NIGHTTIME CLOSURE</b> <b>NO DIVERSION ROUTE (MAX QUEUE METHOD)</b>	<b>AUGUST</b>
	Analyzed for 2009 Construction Season

**SUMMARY OF TRAFFIC MODEL OUTPUT**

SUNDAY EASTBOUND DIRECTION

TIME OF DAY	FLOWS AND CAPACITY IN VEH/HR							AVERAGE SPEEDS IN MPH		
	MAIN ROUTE		SITE CAPA CITY	FLOW		AV.DEL PER VEH (MINS)	AVERAGE QUEUE (VEH)	MAIN ROUTE		SITE
	DEMAND FLOW	PCT HEAVY		MAIN ROUTE	'DIVER TED'			WITHOUT WORK ZONE	WITH WORK ZONE	
MID-1 AM	1231	0.0	3000	1231	0	0.35	0	69.2	59.3	49.7
1-2 AM	715	0.0	3000	715	0	0.36	0	69.9	59.6	49.7
2-3 AM	677	0.0	3000	677	0	0.36	0	69.9	59.6	49.7
3-4 AM	367	0.0	3000	367	0	0.36	0	70.2	59.7	49.7
4-5 AM	301	0.0	3000	301	0	0.36	0	70.2	59.7	49.7
5-6 AM	437	0.0	3000	437	0	0.36	0	70.2	59.7	49.7
6-7 AM	749	0.0	3000	749	0	0.35	0	69.8	59.6	49.7
7-8 AM	1159	0.0	3000	1159	0	0.35	0	69.3	59.4	49.7
8-9 AM	1542	0.0	3000	1542	0	0.34	0	68.8	59.1	49.7
9-10 AM	2450	0.0	OFF	2450	0	0.00	0	67.7	67.7	67.7
10-11 AM	3088	0.0	OFF	3088	0	0.00	0	66.9	66.9	66.9
11AM-NOON	4096	0.0	OFF	4096	0	0.00	0	62.8	62.8	62.8
NOON-1PM	3953	0.0	OFF	3953	0	0.00	0	63.8	63.8	63.8
1-2 PM	3854	0.0	OFF	3854	0	0.00	0	64.5	64.5	64.5
2-3 PM	3829	0.0	OFF	3829	0	0.00	0	64.7	64.7	64.7
3-4 PM	3843	0.0	OFF	3843	0	0.00	0	64.6	64.6	64.6
4-5 PM	3805	0.0	OFF	3805	0	0.00	0	64.8	64.8	64.8
5-6 PM	3506	0.0	OFF	3506	0	0.00	0	66.4	66.4	66.4
6-7 PM	3601	0.0	OFF	3601	0	0.00	0	66.3	66.3	66.3
7-8 PM	2859	0.0	3000	2859	0	0.64	0	67.2	51.8	39.6
8-9 PM	2520	0.0	3000	2520	0	0.41	0	67.6	56.6	46.3
9-10 PM	2185	0.0	3000	2185	0	0.33	0	68.0	58.8	49.7
10-11 PM	1586	0.0	3000	1586	0	0.34	0	68.7	59.1	49.7
11PM-MID	1090	0.0	3000	1090	0	0.35	0	69.4	59.4	49.7

"OFF" INDICATES NO ROAD WORK (ALL LANES OPEN TO TRAFFIC)

*----- SITE BREAKDOWN DELAYS -----*	
BREAKDOWN DURATION (MINS)	0
RANGE OF QUEUE DELAY - MIN (VEH-H) MAX	0.0
AV BREAKDOWNS PER DAY	0.00
AV QUEUE DELAY/DAY (VEH-H)	0.0
AV TOTAL DELAY/DAY (VEH-H)	0.0

*----- SITE ACCIDENT DELAYS -----*	
BREAKDOWN DURATION (MINS)	0
RANGE OF QUEUE DELAY - MIN (VEH-H) MAX	0
AV BREAKDOWNS PER DAY	0
AV QUEUE DELAY/DAY (VEH-H)	0
AV TOTAL DELAY/DAY (VEH-H)	0

AVERAGE ACCIDENT NUMBERS (PIA/DAY)	
MAIN ROUTE WITHOUT WORKS	0.0204
MAIN ROUTE WITH WORKS	0.0192
'DIVERSION'	0.0000

PIA: Personal Injury Accidents

ECONOMIC IMPACT ON ROAD USERS	
ROAD USER COSTS PER DAY	\$1,607
CONGESTED HOURS PER DAY*	0

\*Delays Exceeding User-Specified Maximum

**IH 94: STH 181 TO USH 41 (MILWAUKEE COUNTY)  
NIGHTTIME CLOSURE  
NO DIVERSION ROUTE (MAX QUEUE METHOD)**

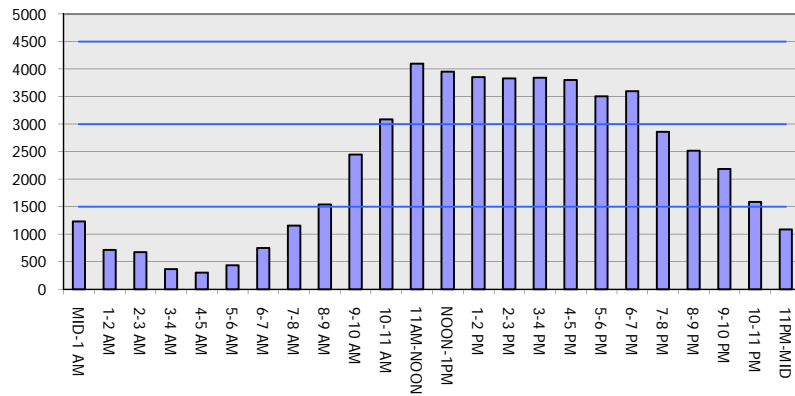
**AUGUST**

Analyzed for 2009  
Construction Season

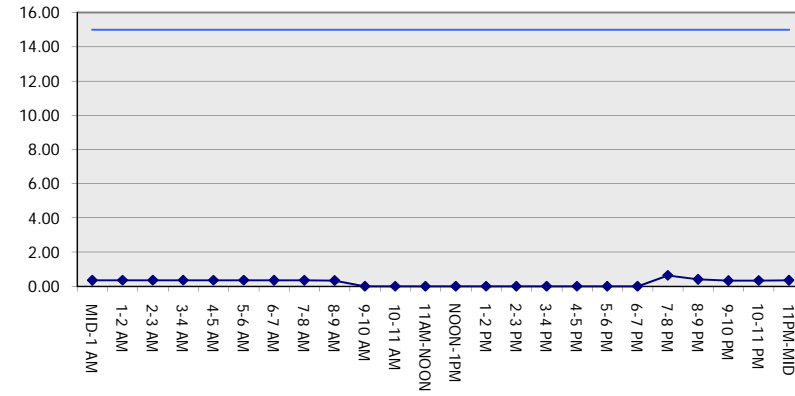
**GRAPHICAL REPRESENTATION OF TRAFFIC MODEL INPUT AND OUTPUT**

**SUNDAY EASTBOUND DIRECTION**

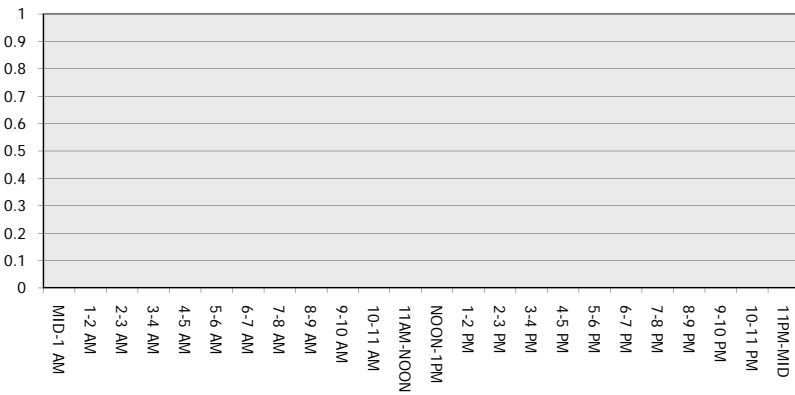
**Main Route - Traffic Demand (Vehicles Per Hour)**



**Main Route Average Delay Per Vehicle (Minutes)**



**Main Route - Average Queue Length (Vehicles)**



**Main Route - Average Speed (MPH)**

