

IH 94: STH 181 TO USH 41 (MILWAUKEE COUNTY) NIGHTTIME CLOSURE NO DIVERSION ROUTE (MAX QUEUE METHOD)	MAY
	Analyzed for 2009 Construction Season

SUMMARY OF TRAFFIC MODEL OUTPUT

SUNDAY WESTBOUND DIRECTION

TIME OF DAY	FLOWS AND CAPACITY IN VEH/HR						AVERAGE SPEEDS IN MPH			
	MAIN ROUTE		SITE CAPA CITY	FLOW		AV.DEL PER VEH (MINS)	AVERAGE QUEUE (VEH)	MAIN ROUTE		SITE
	DEMAND FLOW	PCT HEAVY		MAIN ROUTE	'DIVER TED'			WITHOUT WORK ZONE	WITH WORK ZONE	
MID-1 AM	1409	0.0	3000	1409	0	0.34	0	69.0	59.2	49.7
1-2 AM	1072	0.0	3000	1072	0	0.35	0	69.4	59.4	49.7
2-3 AM	1135	0.0	3000	1135	0	0.35	0	69.3	59.4	49.7
3-4 AM	528	0.0	3000	528	0	0.36	0	70.0	59.7	49.7
4-5 AM	409	0.0	3000	409	0	0.36	0	70.2	59.7	49.7
5-6 AM	522	0.0	3000	522	0	0.36	0	70.1	59.7	49.7
6-7 AM	888	0.0	3000	888	0	0.35	0	69.6	59.5	49.7
7-8 AM	1130	0.0	3000	1130	0	0.35	0	69.3	59.4	49.7
8-9 AM	1548	0.0	3000	1548	0	0.34	0	68.8	59.1	49.7
9-10 AM	2313	0.0	OFF	2313	0	0.00	0	67.9	67.9	67.9
10-11 AM	2918	0.0	OFF	2918	0	0.00	0	67.1	67.1	67.1
11AM-NOON	3557	0.0	OFF	3557	0	0.00	0	66.3	66.3	66.3
NOON-1PM	3956	0.0	OFF	3956	0	0.00	0	63.8	63.8	63.8
1-2 PM	3799	0.0	OFF	3799	0	0.00	0	64.9	64.9	64.9
2-3 PM	3951	0.0	OFF	3951	0	0.00	0	63.8	63.8	63.8
3-4 PM	4056	0.0	OFF	4056	0	0.00	0	63.2	63.2	63.2
4-5 PM	4369	0.0	OFF	4369	0	0.00	0	61.0	61.0	61.0
5-6 PM	3419	0.0	OFF	3419	0	0.00	0	66.5	66.5	66.5
6-7 PM	2716	0.0	OFF	2716	0	0.00	0	67.4	67.4	67.4
7-8 PM	2378	0.0	3000	2378	0	0.33	0	67.8	58.7	49.7
8-9 PM	2010	0.0	3000	2010	0	0.33	0	68.2	58.9	49.7
9-10 PM	1810	0.0	3000	1810	0	0.34	0	68.5	59.0	49.7
10-11 PM	1398	0.0	3000	1398	0	0.34	0	69.0	59.2	49.7
11PM-MID	906	0.0	3000	906	0	0.35	0	69.6	59.5	49.7

"OFF" INDICATES NO ROAD WORK (ALL LANES OPEN TO TRAFFIC)

----- SITE BREAKDOWN DELAYS -----	
BREAKDOWN DURATION (MINS)	0
RANGE OF QUEUE DELAY - MIN (VEH-H) MAX	0.0
AV BREAKDOWNS PER DAY	0.00
AV QUEUE DELAY/DAY (VEH-H)	0.0
AV TOTAL DELAY/DAY (VEH-H)	0.0

----- SITE ACCIDENT DELAYS -----	
BREAKDOWN DURATION (MINS)	0
RANGE OF QUEUE DELAY - MIN (VEH-H) MAX	0
AV BREAKDOWNS PER DAY	0
AV QUEUE DELAY/DAY (VEH-H)	0
AV TOTAL DELAY/DAY (VEH-H)	0

AVERAGE ACCIDENT NUMBERS (PIA/DAY)	
MAIN ROUTE WITHOUT WORKS	0.0199
MAIN ROUTE WITH WORKS	0.0188
'DIVERSION'	0.0000
<small>PIA: Personal Injury Accidents</small>	
IMPACTS ON ROAD USERS	
ROAD USER COSTS PER DAY	\$1,431
CONGESTED HOURS PER DAY*	0

*Delays Exceeding User-Specified Maximum

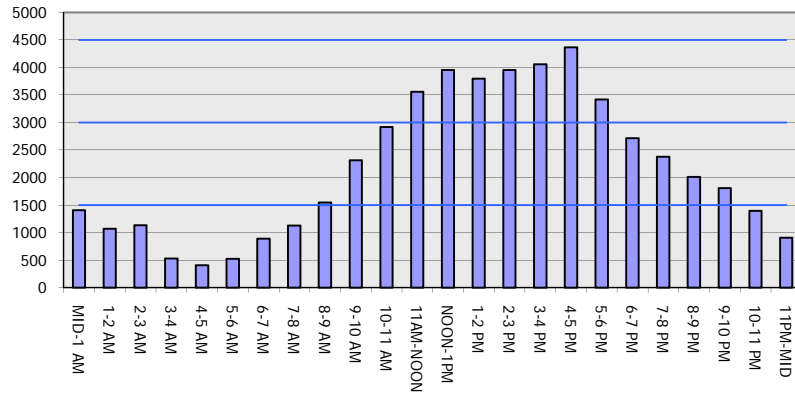
IH 94: STH 181 TO USH 41 (MILWAUKEE COUNTY)
NIGHTTIME CLOSURE
NO DIVERSION ROUTE (MAX QUEUE METHOD)

MAY
 Analyzed for 2009
 Construction Season

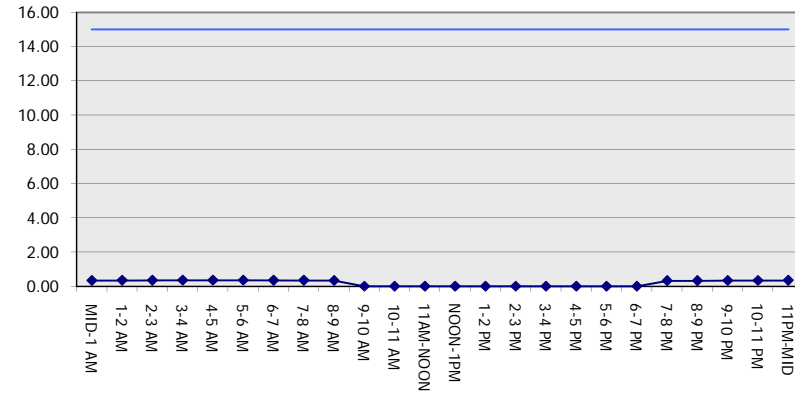
GRAPHICAL REPRESENTATION OF TRAFFIC MODEL INPUT AND OUTPUT

SUNDAY WESTBOUND DIRECTION

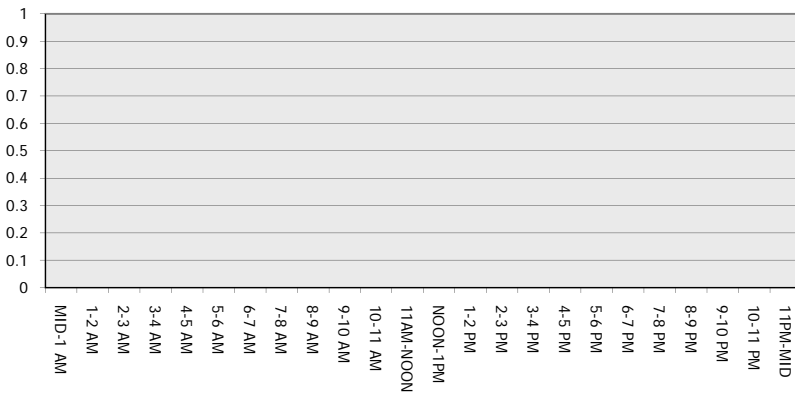
Main Route - Traffic Demand (Vehicles Per Hour)



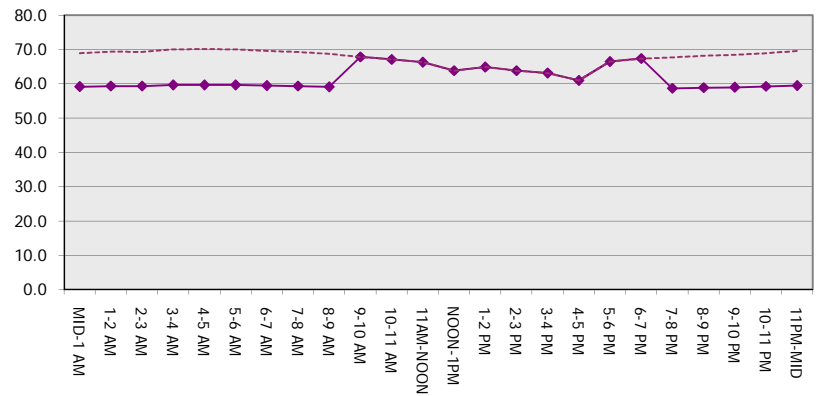
Main Route Average Delay Per Vehicle (Minutes)



Main Route - Average Queue Length (Vehicles)



Main Route - Average Speed (MPH)



IH 94: STH 181 TO USH 41 (MILWAUKEE COUNTY) NIGHTTIME CLOSURE NO DIVERSION ROUTE (MAX QUEUE METHOD)	MAY
	Analyzed for 2009 Construction Season

SUMMARY OF TRAFFIC MODEL OUTPUT

SUNDAY EASTBOUND DIRECTION

TIME OF DAY	FLOWS AND CAPACITY IN VEH/HR						AVERAGE SPEEDS IN MPH			
	MAIN ROUTE		SITE CAPA CITY	FLOW		AV.DEL PER VEH (MINS)	AVERAGE QUEUE (VEH)	MAIN ROUTE		SITE
	DEMAND FLOW	PCT HEAVY		MAIN ROUTE	'DIVER TED'			WITHOUT WORK ZONE	WITH WORK ZONE	
MID-1 AM	1153	0.0	3000	1153	0	0.35	0	69.3	59.4	49.7
1-2 AM	692	0.0	3000	692	0	0.36	0	69.9	59.6	49.7
2-3 AM	547	0.0	3000	547	0	0.36	0	70.0	59.7	49.7
3-4 AM	345	0.0	3000	345	0	0.36	0	70.2	59.7	49.7
4-5 AM	264	0.0	3000	264	0	0.36	0	70.2	59.7	49.7
5-6 AM	413	0.0	3000	413	0	0.36	0	70.2	59.7	49.7
6-7 AM	789	0.0	3000	789	0	0.35	0	69.7	59.6	49.7
7-8 AM	1160	0.0	3000	1160	0	0.35	0	69.3	59.4	49.7
8-9 AM	1823	0.0	3000	1823	0	0.34	0	68.5	59.0	49.7
9-10 AM	2431	0.0	OFF	2431	0	0.00	0	67.7	67.7	67.7
10-11 AM	3094	0.0	OFF	3094	0	0.00	0	66.9	66.9	66.9
11AM-NOON	3980	0.0	OFF	3980	0	0.00	0	63.7	63.7	63.7
NOON-1PM	3644	0.0	OFF	3644	0	0.00	0	66.0	66.0	66.0
1-2 PM	3830	0.0	OFF	3830	0	0.00	0	64.7	64.7	64.7
2-3 PM	3753	0.0	OFF	3753	0	0.00	0	65.2	65.2	65.2
3-4 PM	3733	0.0	OFF	3733	0	0.00	0	65.3	65.3	65.3
4-5 PM	3700	0.0	OFF	3700	0	0.00	0	65.6	65.6	65.6
5-6 PM	3549	0.0	OFF	3549	0	0.00	0	66.3	66.3	66.3
6-7 PM	3496	0.0	OFF	3496	0	0.00	0	66.4	66.4	66.4
7-8 PM	3102	0.0	2999	3102	0	2.08	77	66.9	34.0	37.3
8-9 PM	2649	0.0	3000	2649	0	0.79	19	67.4	49.2	42.9
9-10 PM	2377	0.0	3000	2377	0	0.33	0	67.8	58.7	49.7
10-11 PM	1819	0.0	3000	1819	0	0.34	0	68.5	59.0	49.7
11PM-MID	1036	0.0	3000	1036	0	0.35	0	69.4	59.4	49.7

"OFF" INDICATES NO ROAD WORK (ALL LANES OPEN TO TRAFFIC)

----- SITE BREAKDOWN DELAYS -----	
BREAKDOWN DURATION (MINS)	0
RANGE OF QUEUE DELAY - MIN (VEH-H) MAX	0.0
AV BREAKDOWNS PER DAY	0.00
AV QUEUE DELAY/DAY (VEH-H)	0.0
AV TOTAL DELAY/DAY (VEH-H)	0.0

----- SITE ACCIDENT DELAYS -----	
BREAKDOWN DURATION (MINS)	0
RANGE OF QUEUE DELAY - MIN (VEH-H) MAX	0
AV BREAKDOWNS PER DAY	0
AV QUEUE DELAY/DAY (VEH-H)	0
AV TOTAL DELAY/DAY (VEH-H)	0

AVERAGE ACCIDENT NUMBERS (PIA/DAY)	
MAIN ROUTE WITHOUT WORKS	0.0204
MAIN ROUTE WITH WORKS	0.0192
'DIVERSION'	0.0000

PIA: Personal Injury Accidents

ECONOMIC IMPACT ON ROAD USERS	
ROAD USER COSTS PER DAY	\$3,131
CONGESTED HOURS PER DAY*	0

*Delays Exceeding User-Specified Maximum

**IH 94: STH 181 TO USH 41 (MILWAUKEE COUNTY)
NIGHTTIME CLOSURE
NO DIVERSION ROUTE (MAX QUEUE METHOD)**

MAY
Analyzed for 2009
Construction Season

GRAPHICAL REPRESENTATION OF TRAFFIC MODEL INPUT AND OUTPUT
SUNDAY EASTBOUND DIRECTION

