

IH 94: STH 20 TO STH 50 (RACINE AND KENOSHA COUNTIES) NIGHTTIME CLOSURE NO DIVERSION ROUTE (MAX QUEUE METHOD)	OCTOBER
	Analyzed for 2009 Construction Season

SUMMARY OF TRAFFIC MODEL OUTPUT

SUNDAY WESTBOUND DIRECTION

TIME OF DAY	FLOWS AND CAPACITY IN VEH/HR						AVERAGE SPEEDS IN MPH			
	MAIN ROUTE		SITE CAPA CITY	FLOW		AV.DEL PER VEH (MINS)	AVERAGE QUEUE (VEH)	MAIN ROUTE		SITE
	DEMAND FLOW	PCT HEAVY		MAIN ROUTE	'DIVER TED'			WITHOUT WORK ZONE	WITH WORK ZONE	
MID-1 AM	536	0.0	3000	536	0	0.36	0	70.2	67.6	49.7
1-2 AM	377	0.0	3000	377	0	0.36	0	70.2	67.6	49.7
2-3 AM	311	0.0	3000	311	0	0.36	0	70.2	67.6	49.7
3-4 AM	264	0.0	3000	264	0	0.36	0	70.2	67.6	49.7
4-5 AM	251	0.0	3000	251	0	0.36	0	70.2	67.6	49.7
5-6 AM	334	0.0	3000	334	0	0.36	0	70.2	67.6	49.7
6-7 AM	506	0.0	3000	506	0	0.36	0	70.2	67.6	49.7
7-8 AM	702	0.0	3000	702	0	0.36	0	70.2	67.6	49.7
8-9 AM	1177	0.0	3000	1177	0	0.36	0	70.2	67.6	49.7
9-10 AM	1859	0.0	OFF	1859	0	0.00	0	69.7	69.7	69.7
10-11 AM	2599	0.0	OFF	2599	0	0.00	0	68.8	68.8	68.8
11AM-NOON	2937	0.0	OFF	2937	0	0.00	0	68.4	68.4	68.4
NOON-1PM	3263	0.0	OFF	3263	0	0.00	0	68.0	68.0	68.0
1-2 PM	3395	0.0	OFF	3395	0	0.00	0	67.8	67.8	67.8
2-3 PM	3390	0.0	OFF	3390	0	0.00	0	67.8	67.8	67.8
3-4 PM	3407	0.0	OFF	3407	0	0.00	0	67.8	67.8	67.8
4-5 PM	3389	0.0	OFF	3389	0	0.00	0	67.8	67.8	67.8
5-6 PM	3092	0.0	OFF	3092	0	0.00	0	68.2	68.2	68.2
6-7 PM	2695	0.0	OFF	2695	0	0.00	0	68.7	68.7	68.7
7-8 PM	2285	0.0	3000	2285	0	0.35	0	69.2	66.8	49.7
8-9 PM	1680	0.0	3000	1680	0	0.36	0	69.9	67.4	49.7
9-10 PM	1231	0.0	3000	1231	0	0.36	0	70.2	67.6	49.7
10-11 PM	834	0.0	3000	834	0	0.36	0	70.2	67.6	49.7
11PM-MID	602	0.0	3000	602	0	0.36	0	70.2	67.6	49.7

"OFF" INDICATES NO ROAD WORK (ALL LANES OPEN TO TRAFFIC)

----- SITE BREAKDOWN DELAYS -----	
BREAKDOWN DURATION (MINS)	0
RANGE OF QUEUE DELAY - MIN (VEH-H) MAX	0.0
AV BREAKDOWNS PER DAY	0.00
AV QUEUE DELAY/DAY (VEH-H)	0.0
AV TOTAL DELAY/DAY (VEH-H)	0.0

----- SITE ACCIDENT DELAYS -----	
BREAKDOWN DURATION (MINS)	0
RANGE OF QUEUE DELAY - MIN (VEH-H) MAX	0
AV BREAKDOWNS PER DAY	0
AV QUEUE DELAY/DAY (VEH-H)	0
AV TOTAL DELAY/DAY (VEH-H)	0

AVERAGE ACCIDENT NUMBERS (PIA/DAY)	
MAIN ROUTE WITHOUT WORKS	0.0713
MAIN ROUTE WITH WORKS	0.0706
'DIVERSION'	0.0000
<small>PIA: Personal Injury Accidents</small>	
IMPACTS ON ROAD USERS	
ROAD USER COSTS PER DAY	\$900
CONGESTED HOURS PER DAY*	0

*Delays Exceeding User-Specified Maximum

**IH 94: STH 20 TO STH 50 (RACINE AND KENOSHA COUNTIES)
NIGHTTIME CLOSURE
NO DIVERSION ROUTE (MAX QUEUE METHOD)**

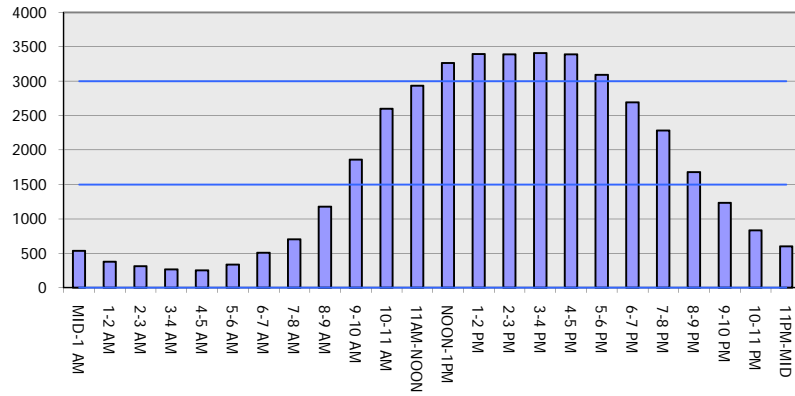
OCTOBER

Analyzed for 2009
Construction Season

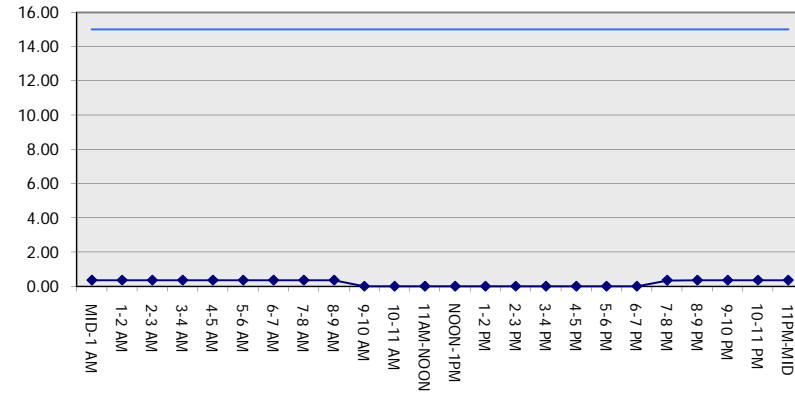
GRAPHICAL REPRESENTATION OF TRAFFIC MODEL INPUT AND OUTPUT

SUNDAY WESTBOUND DIRECTION

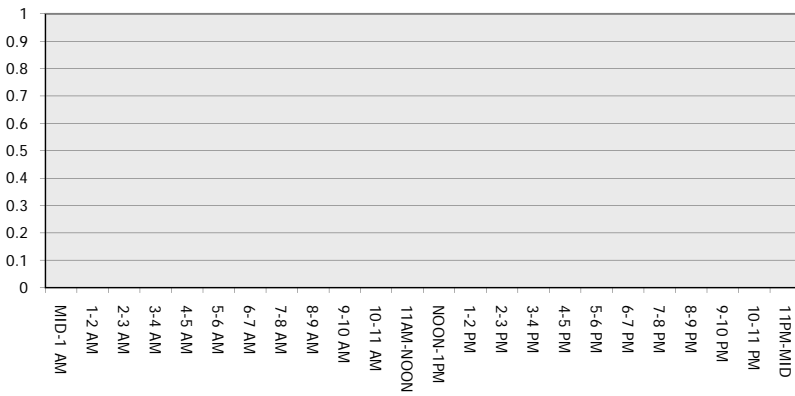
Main Route - Traffic Demand (Vehicles Per Hour)



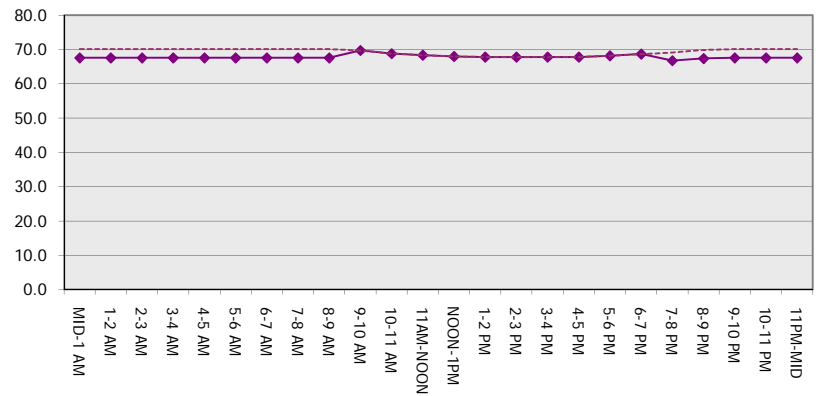
Main Route Average Delay Per Vehicle (Minutes)



Main Route - Average Queue Length (Vehicles)



Main Route - Average Speed (MPH)



IH 94: STH 20 TO STH 50 (RACINE AND KENOSHA COUNTIES) NIGHTTIME CLOSURE NO DIVERSION ROUTE (MAX QUEUE METHOD)	OCTOBER
	Analyzed for 2009 Construction Season

SUMMARY OF TRAFFIC MODEL OUTPUT

SUNDAY EASTBOUND DIRECTION

TIME OF DAY	FLOWS AND CAPACITY IN VEH/HR							AVERAGE SPEEDS IN MPH		
	MAIN ROUTE		SITE CAPA CITY	FLOW		AV.DEL PER VEH (MINS)	AVERAGE QUEUE (VEH)	MAIN ROUTE		SITE
	DEMAND FLOW	PCT HEAVY		MAIN ROUTE	'DIVER TED'			WITHOUT WORK ZONE	WITH WORK ZONE	
MID-1 AM	649	0.0	3000	649	0	0.36	0	70.2	67.6	49.7
1-2 AM	425	0.0	3000	425	0	0.36	0	70.2	67.6	49.7
2-3 AM	345	0.0	3000	345	0	0.36	0	70.2	67.6	49.7
3-4 AM	223	0.0	3000	223	0	0.36	0	70.2	67.6	49.7
4-5 AM	217	0.0	3000	217	0	0.36	0	70.2	67.6	49.7
5-6 AM	362	0.0	3000	362	0	0.36	0	70.2	67.6	49.7
6-7 AM	546	0.0	3000	546	0	0.36	0	70.2	67.6	49.7
7-8 AM	805	0.0	3000	805	0	0.36	0	70.2	67.6	49.7
8-9 AM	1226	0.0	3000	1226	0	0.36	0	70.2	67.6	49.7
9-10 AM	1758	0.0	OFF	1758	0	0.00	0	69.9	69.9	69.9
10-11 AM	2282	0.0	OFF	2282	0	0.00	0	69.2	69.2	69.2
11AM-NOON	2624	0.0	OFF	2624	0	0.00	0	68.8	68.8	68.8
NOON-1PM	2791	0.0	OFF	2791	0	0.00	0	68.6	68.6	68.6
1-2 PM	2760	0.0	OFF	2760	0	0.00	0	68.6	68.6	68.6
2-3 PM	2731	0.0	OFF	2731	0	0.00	0	68.6	68.6	68.6
3-4 PM	2745	0.0	OFF	2745	0	0.00	0	68.6	68.6	68.6
4-5 PM	2808	0.0	OFF	2808	0	0.00	0	68.6	68.6	68.6
5-6 PM	2713	0.0	OFF	2713	0	0.00	0	68.7	68.7	68.7
6-7 PM	2518	0.0	OFF	2518	0	0.00	0	68.9	68.9	68.9
7-8 PM	2215	0.0	3000	2215	0	0.35	0	69.3	66.8	49.7
8-9 PM	1822	0.0	3000	1822	0	0.35	0	69.8	67.3	49.7
9-10 PM	1437	0.0	3000	1437	0	0.36	0	70.2	67.6	49.7
10-11 PM	1076	0.0	3000	1076	0	0.36	0	70.2	67.6	49.7
11PM-MID	735	0.0	3000	735	0	0.36	0	70.2	67.6	49.7

"OFF" INDICATES NO ROAD WORK (ALL LANES OPEN TO TRAFFIC)

----- SITE BREAKDOWN DELAYS -----	
BREAKDOWN DURATION (MINS)	0
RANGE OF QUEUE DELAY - MIN (VEH-H) MAX	0.0
AV BREAKDOWNS PER DAY	0.00
AV QUEUE DELAY/DAY (VEH-H)	0.0
AV TOTAL DELAY/DAY (VEH-H)	0.0

----- SITE ACCIDENT DELAYS -----	
BREAKDOWN DURATION (MINS)	0
RANGE OF QUEUE DELAY - MIN (VEH-H) MAX	0
AV BREAKDOWNS PER DAY	0
AV QUEUE DELAY/DAY (VEH-H)	0
AV TOTAL DELAY/DAY (VEH-H)	0

AVERAGE ACCIDENT NUMBERS (PIA/DAY)	
MAIN ROUTE WITHOUT WORKS	0.0656
MAIN ROUTE WITH WORKS	0.0648
'DIVERSION'	0.0000

PIA: Personal Injury Accidents

ECONOMIC IMPACT ON ROAD USERS	
ROAD USER COSTS PER DAY	\$977
CONGESTED HOURS PER DAY*	0

*Delays Exceeding User-Specified Maximum

**IH 94: STH 20 TO STH 50 (RACINE AND KENOSHA COUNTIES)
NIGHTTIME CLOSURE
NO DIVERSION ROUTE (MAX QUEUE METHOD)**

OCTOBER

Analyzed for 2009
Construction Season

GRAPHICAL REPRESENTATION OF TRAFFIC MODEL INPUT AND OUTPUT

SUNDAY EASTBOUND DIRECTION

