

IH 94: STH 20 TO STH 50 (RACINE AND KENOSHA COUNTIES) NIGHTTIME 2 LANE CLOSURE NO DIVERSION ROUTE (MAX QUEUE METHOD)	OCTOBER
	Analyzed for 2009 Construction Season

SUMMARY OF TRAFFIC MODEL OUTPUT

MON-THUR WESTBOUND DIRECTION

TIME OF DAY	FLOWS AND CAPACITY IN VEH/HR						AVERAGE SPEEDS IN MPH			
	MAIN ROUTE		SITE CAPA CITY	FLOW		AV.DEL PER VEH (MINS)	AVERAGE QUEUE (VEH)	MAIN ROUTE		SITE
	DEMAND FLOW	PCT HEAVY		MAIN ROUTE	'DIVER TED'			WITHOUT WORK ZONE	WITH WORK ZONE	
MID-1 AM	445	0.0	1500	445	0	0.42	0	70.2	67.1	47.1
1-2 AM	358	0.0	1500	358	0	0.41	0	70.2	67.2	47.6
2-3 AM	354	0.0	1500	354	0	0.41	0	70.2	67.2	47.6
3-4 AM	407	0.0	1500	407	0	0.42	0	70.2	67.1	47.3
4-5 AM	722	0.0	1500	722	0	0.46	0	70.2	66.9	46.0
5-6 AM	1436	0.0	OFF	1436	0	0.00	0	70.2	70.2	70.2
6-7 AM	2103	0.0	OFF	2103	0	0.00	0	69.4	69.4	69.4
7-8 AM	2289	0.0	OFF	2289	0	0.00	0	69.2	69.2	69.2
8-9 AM	2149	0.0	OFF	2149	0	0.00	0	69.4	69.4	69.4
9-10 AM	2146	0.0	OFF	2146	0	0.00	0	69.4	69.4	69.4
10-11 AM	2088	0.0	OFF	2088	0	0.00	0	69.4	69.4	69.4
11AM-NOON	2131	0.0	OFF	2131	0	0.00	0	69.4	69.4	69.4
NOON-1PM	2222	0.0	OFF	2222	0	0.00	0	69.3	69.3	69.3
1-2 PM	2328	0.0	OFF	2328	0	0.00	0	69.1	69.1	69.1
2-3 PM	2433	0.0	OFF	2433	0	0.00	0	69.0	69.0	69.0
3-4 PM	2568	0.0	OFF	2568	0	0.00	0	68.9	68.9	68.9
4-5 PM	2638	0.0	OFF	2638	0	0.00	0	68.7	68.7	68.7
5-6 PM	2801	0.0	OFF	2801	0	0.00	0	68.6	68.6	68.6
6-7 PM	2178	0.0	OFF	2178	0	0.00	0	69.3	69.3	69.3
7-8 PM	1596	0.0	1499	1596	0	3.89	76	70.0	49.4	32.5
8-9 PM	1245	0.0	1500	1245	0	1.50	23	70.2	60.4	38.4
9-10 PM	1129	0.0	1500	1129	0	0.52	0	70.2	66.4	43.8
10-11 PM	821	0.0	1500	821	0	0.47	0	70.2	66.8	45.5
11PM-MID	651	0.0	1500	651	0	0.45	0	70.2	66.9	46.3

"OFF" INDICATES NO ROAD WORK (ALL LANES OPEN TO TRAFFIC)

----- SITE BREAKDOWN DELAYS -----	
BREAKDOWN DURATION (MINS)	0
RANGE OF QUEUE DELAY - MIN (VEH-H) MAX	0.0
AV BREAKDOWNS PER DAY	0.00
AV QUEUE DELAY/DAY (VEH-H)	0.0
AV TOTAL DELAY/DAY (VEH-H)	0.0

----- SITE ACCIDENT DELAYS -----	
BREAKDOWN DURATION (MINS)	0
RANGE OF QUEUE DELAY - MIN (VEH-H) MAX	0
AV BREAKDOWNS PER DAY	0
AV QUEUE DELAY/DAY (VEH-H)	0
AV TOTAL DELAY/DAY (VEH-H)	0

AVERAGE ACCIDENT NUMBERS (PIA/DAY)	
MAIN ROUTE WITHOUT WORKS	0.0681
MAIN ROUTE WITH WORKS	0.0675
'DIVERSION'	0.0000
<small>PIA: Personal Injury Accidents</small>	
IMPACTS ON ROAD USERS	
ROAD USER COSTS PER DAY	\$2,103
CONGESTED HOURS PER DAY*	0

*Delays Exceeding User-Specified Maximum

**IH 94: STH 20 TO STH 50 (RACINE AND KENOSHA COUNTIES)
 NIGHTTIME 2 LANE CLOSURE
 NO DIVERSION ROUTE (MAX QUEUE METHOD)**

OCTOBER

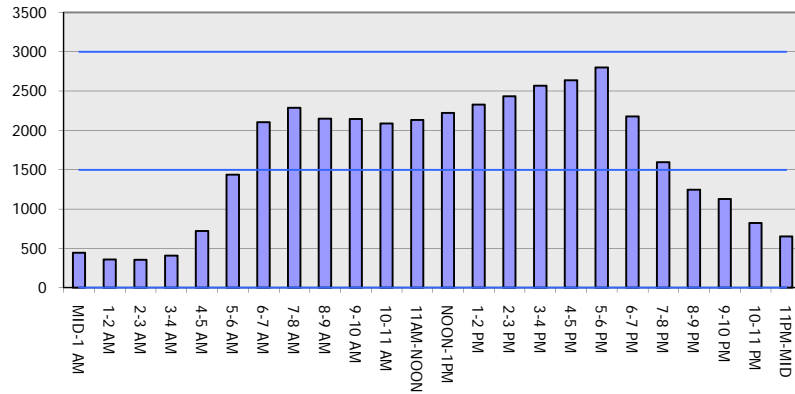
Analyzed for 2009
 Construction Season

GRAPHICAL REPRESENTATION OF TRAFFIC MODEL INPUT AND OUTPUT

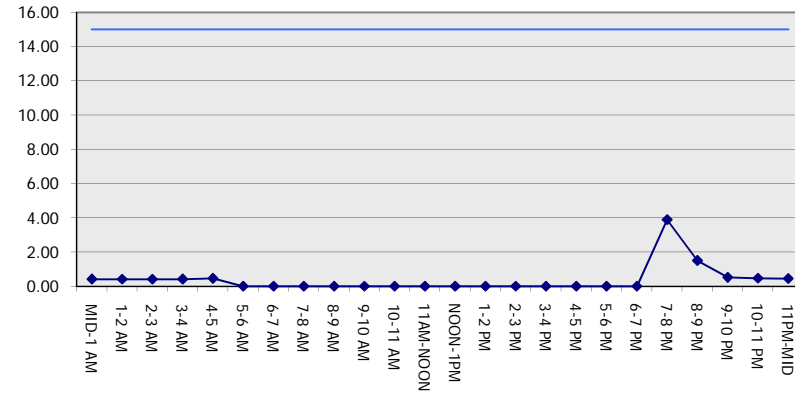
MON-THUR

WESTBOUND DIRECTION

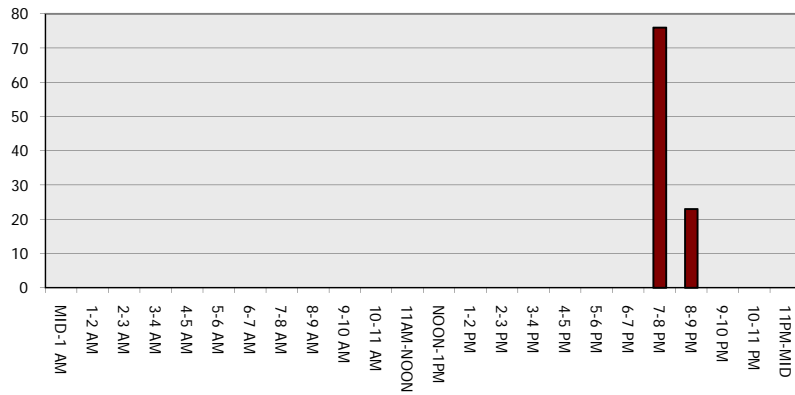
Main Route - Traffic Demand (Vehicles Per Hour)



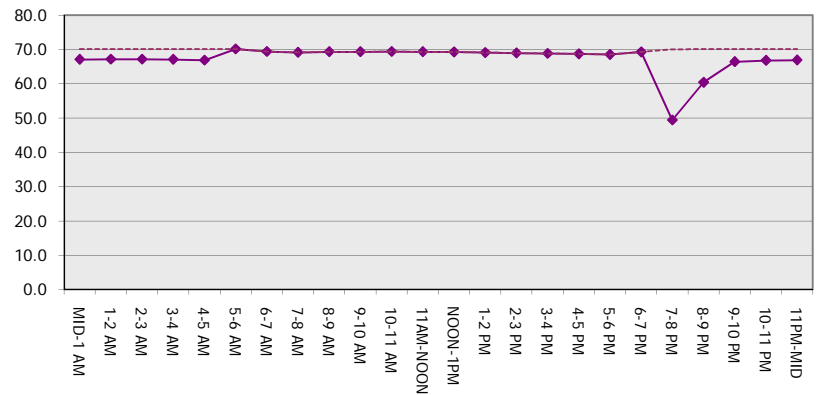
Main Route Average Delay Per Vehicle (Minutes)



Main Route - Average Queue Length (Vehicles)



Main Route - Average Speed (MPH)



IH 94: STH 20 TO STH 50 (RACINE AND KENOSHA COUNTIES) NIGHTTIME 2 LANE CLOSURE NO DIVERSION ROUTE (MAX QUEUE METHOD)	OCTOBER
	Analyzed for 2009 Construction Season

SUMMARY OF TRAFFIC MODEL OUTPUT

MON-THUR EASTBOUND DIRECTION

TIME OF DAY	FLOWS AND CAPACITY IN VEH/HR							AVERAGE SPEEDS IN MPH		
	MAIN ROUTE		SITE CAPA CITY	FLOW		AV.DEL PER VEH (MINS)	AVERAGE QUEUE (VEH)	MAIN ROUTE		SITE
	DEMAND FLOW	PCT HEAVY		MAIN ROUTE	'DIVER TED'			WITHOUT WORK ZONE	WITH WORK ZONE	
MID-1 AM	451	0.0	1500	451	0	0.43	0	70.2	67.1	47.1
1-2 AM	356	0.0	1500	356	0	0.41	0	70.2	67.2	47.6
2-3 AM	329	0.0	1500	329	0	0.41	0	70.2	67.2	47.7
3-4 AM	380	0.0	1500	380	0	0.42	0	70.2	67.2	47.4
4-5 AM	591	0.0	1500	591	0	0.44	0	70.2	67.0	46.5
5-6 AM	1243	0.0	OFF	1243	0	0.00	0	70.2	70.2	70.2
6-7 AM	2143	0.0	OFF	2143	0	0.00	0	69.4	69.4	69.4
7-8 AM	2329	0.0	OFF	2329	0	0.00	0	69.1	69.1	69.1
8-9 AM	2013	0.0	OFF	2013	0	0.00	0	69.6	69.6	69.6
9-10 AM	1924	0.0	OFF	1924	0	0.00	0	69.7	69.7	69.7
10-11 AM	2042	0.0	OFF	2042	0	0.00	0	69.5	69.5	69.5
11AM-NOON	2041	0.0	OFF	2041	0	0.00	0	69.5	69.5	69.5
NOON-1PM	2042	0.0	OFF	2042	0	0.00	0	69.5	69.5	69.5
1-2 PM	2089	0.0	OFF	2089	0	0.00	0	69.4	69.4	69.4
2-3 PM	2268	0.0	OFF	2268	0	0.00	0	69.2	69.2	69.2
3-4 PM	2614	0.0	OFF	2614	0	0.00	0	68.8	68.8	68.8
4-5 PM	2647	0.0	OFF	2647	0	0.00	0	68.7	68.7	68.7
5-6 PM	2546	0.0	OFF	2546	0	0.00	0	68.9	68.9	68.9
6-7 PM	2027	0.0	OFF	2027	0	0.00	0	69.5	69.5	69.5
7-8 PM	1441	0.0	1499	1441	0	1.13	5	70.2	62.6	34.4
8-9 PM	1254	0.0	1500	1254	0	0.69	0	70.2	65.3	39.2
9-10 PM	1077	0.0	1500	1077	0	0.50	0	70.2	66.6	44.5
10-11 PM	856	0.0	1500	856	0	0.48	0	70.2	66.8	45.4
11PM-MID	661	0.0	1500	661	0	0.45	0	70.2	66.9	46.2

"OFF" INDICATES NO ROAD WORK (ALL LANES OPEN TO TRAFFIC)

----- SITE BREAKDOWN DELAYS -----	
BREAKDOWN DURATION (MINS)	0
RANGE OF QUEUE DELAY - MIN (VEH-H) MAX	0.0
AV BREAKDOWNS PER DAY	0.00
AV QUEUE DELAY/DAY (VEH-H)	0.0
AV TOTAL DELAY/DAY (VEH-H)	0.0

----- SITE ACCIDENT DELAYS -----	
BREAKDOWN DURATION (MINS)	0
RANGE OF QUEUE DELAY - MIN (VEH-H) MAX	0
AV BREAKDOWNS PER DAY	0
AV QUEUE DELAY/DAY (VEH-H)	0
AV TOTAL DELAY/DAY (VEH-H)	0

AVERAGE ACCIDENT NUMBERS (PIA/DAY)	
MAIN ROUTE WITHOUT WORKS	0.0648
MAIN ROUTE WITH WORKS	0.0643
'DIVERSION'	0.0000

PIA: Personal Injury Accidents

ECONOMIC IMPACT ON ROAD USERS	
ROAD USER COSTS PER DAY	\$944
CONGESTED HOURS PER DAY*	0

*Delays Exceeding User-Specified Maximum

**IH 94: STH 20 TO STH 50 (RACINE AND KENOSHA COUNTIES)
 NIGHTTIME 2 LANE CLOSURE
 NO DIVERSION ROUTE (MAX QUEUE METHOD)**

OCTOBER

Analyzed for 2009
 Construction Season

GRAPHICAL REPRESENTATION OF TRAFFIC MODEL INPUT AND OUTPUT

MON-THUR EASTBOUND DIRECTION

