

<b>IH 94: STH 50 TO STATE LINE (KENOSHA COUNTY)</b> <b>NIGHTTIME CLOSURE</b> <b>NO DIVERSION ROUTE (MAX QUEUE METHOD)</b>	<b>AUGUST</b>
	Analyzed for 2009 Construction Season

**SUMMARY OF TRAFFIC MODEL OUTPUT**

SATURDAY WESTBOUND DIRECTION

TIME OF DAY	FLOWS AND CAPACITY IN VEH/HR						AVERAGE SPEEDS IN MPH			
	MAIN ROUTE		SITE CAPA CITY	FLOW		AV.DEL PER VEH (MINS)	AVERAGE QUEUE (VEH)	MAIN ROUTE		SITE
	DEMAND FLOW	PCT HEAVY		MAIN ROUTE	'DIVER TED'			WITHOUT WORK ZONE	WITH WORK ZONE	
MID-1 AM	792	0.0	3000	792	0	0.36	0	70.2	64.8	49.7
1-2 AM	505	0.0	3000	505	0	0.36	0	70.2	64.8	49.7
2-3 AM	384	0.0	3000	384	0	0.36	0	70.2	64.8	49.7
3-4 AM	326	0.0	3000	326	0	0.36	0	70.2	64.8	49.7
4-5 AM	422	0.0	3000	422	0	0.36	0	70.2	64.8	49.7
5-6 AM	658	0.0	3000	658	0	0.36	0	70.2	64.8	49.7
6-7 AM	1069	0.0	3000	1069	0	0.36	0	70.2	64.8	49.7
7-8 AM	1632	0.0	3000	1632	0	0.36	0	70.0	64.7	49.7
8-9 AM	2371	0.0	OFF	2371	0	0.00	0	69.1	69.1	69.1
9-10 AM	2958	0.0	OFF	2958	0	0.00	0	68.4	68.4	68.4
10-11 AM	3251	0.0	OFF	3251	0	0.00	0	68.0	68.0	68.0
11AM-NOON	3694	0.0	OFF	3694	0	0.00	0	66.9	66.9	66.9
NOON-1PM	3862	0.0	OFF	3862	0	0.00	0	65.8	65.8	65.8
1-2 PM	3731	0.0	OFF	3731	0	0.00	0	66.7	66.7	66.7
2-3 PM	3558	0.0	OFF	3558	0	0.00	0	67.6	67.6	67.6
3-4 PM	3530	0.0	OFF	3530	0	0.00	0	67.6	67.6	67.6
4-5 PM	3546	0.0	OFF	3546	0	0.00	0	67.6	67.6	67.6
5-6 PM	3063	0.0	OFF	3063	0	0.00	0	68.2	68.2	68.2
6-7 PM	2804	0.0	3000	2804	0	0.63	0	68.6	60.0	40.1
7-8 PM	2571	0.0	3000	2571	0	0.48	0	68.9	62.1	44.6
8-9 PM	2011	0.0	3000	2011	0	0.35	0	69.6	64.4	49.7
9-10 PM	1836	0.0	3000	1836	0	0.35	0	69.7	64.5	49.7
10-11 PM	1475	0.0	3000	1475	0	0.36	0	70.2	64.8	49.7
11PM-MID	1103	0.0	3000	1103	0	0.36	0	70.2	64.8	49.7

"OFF" INDICATES NO ROAD WORK (ALL LANES OPEN TO TRAFFIC)

*----- SITE BREAKDOWN DELAYS -----*	
BREAKDOWN DURATION (MINS)	0
RANGE OF QUEUE DELAY - MIN (VEH-H) MAX	0.0
AV BREAKDOWNS PER DAY	0.00
AV QUEUE DELAY/DAY (VEH-H)	0.0
AV TOTAL DELAY/DAY (VEH-H)	0.0

*----- SITE ACCIDENT DELAYS -----*	
BREAKDOWN DURATION (MINS)	0
RANGE OF QUEUE DELAY - MIN (VEH-H) MAX	0
AV BREAKDOWNS PER DAY	0
AV QUEUE DELAY/DAY (VEH-H)	0
AV TOTAL DELAY/DAY (VEH-H)	0

AVERAGE ACCIDENT NUMBERS (PIA/DAY)	
MAIN ROUTE WITHOUT WORKS	0.0415
MAIN ROUTE WITH WORKS	0.0404
'DIVERSION'	0.0000
PIA: Personal Injury Accidents	
IMPACTS ON ROAD USERS	
ROAD USER COSTS PER DAY	\$1,691
CONGESTED HOURS PER DAY*	0

\*Delays Exceeding User-Specified Maximum

**IH 94: STH 50 TO STATE LINE (KENOSHA COUNTY)**  
**NIGHTTIME CLOSURE**  
**NO DIVERSION ROUTE (MAX QUEUE METHOD)**

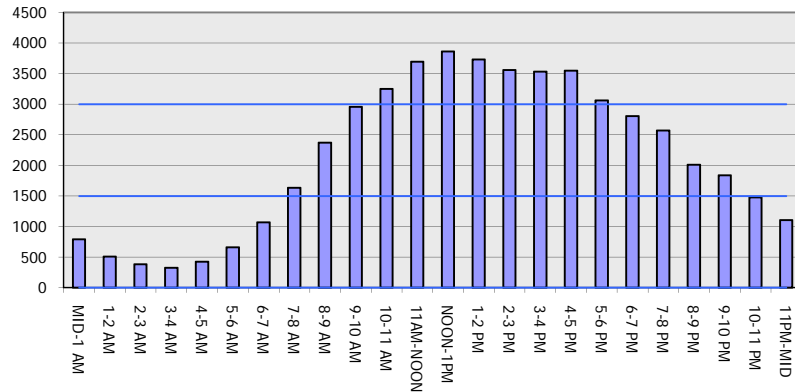
**AUGUST**

Analyzed for 2009  
 Construction Season

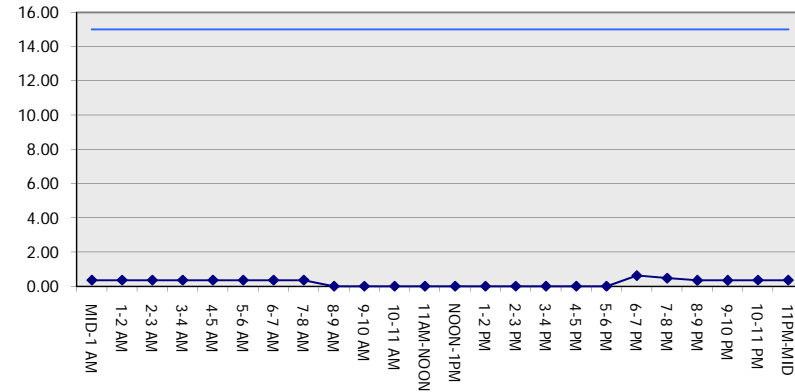
**GRAPHICAL REPRESENTATION OF TRAFFIC MODEL INPUT AND OUTPUT**

**SATURDAY WESTBOUND DIRECTION**

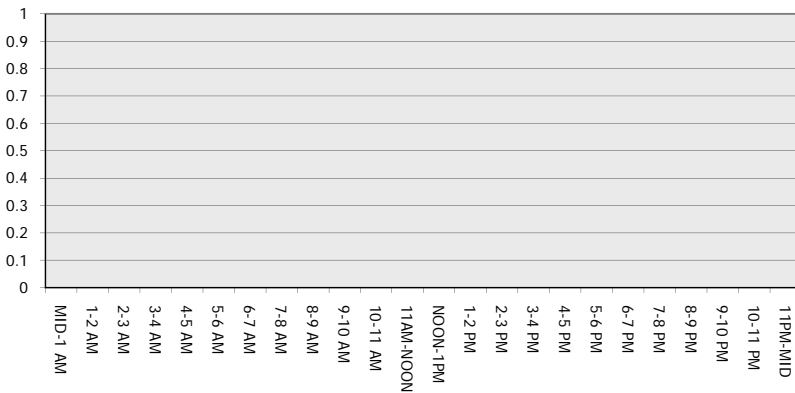
**Main Route - Traffic Demand (Vehicles Per Hour)**



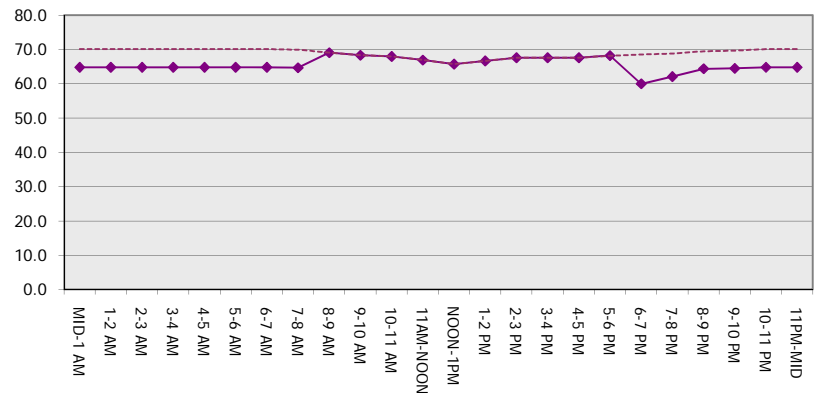
**Main Route Average Delay Per Vehicle (Minutes)**



**Main Route - Average Queue Length (Vehicles)**



**Main Route - Average Speed (MPH)**



<b>IH 94: STH 50 TO STATE LINE (KENOSHA COUNTY)</b> <b>NIGHTTIME CLOSURE</b> <b>NO DIVERSION ROUTE (MAX QUEUE METHOD)</b>	<b>AUGUST</b>
	Analyzed for 2009 Construction Season

**SUMMARY OF TRAFFIC MODEL OUTPUT**

SATURDAY EASTBOUND DIRECTION

TIME OF DAY	FLOWS AND CAPACITY IN VEH/HR							AVERAGE SPEEDS IN MPH		
	MAIN ROUTE		SITE CAPA CITY	FLOW		AV.DEL PER VEH (MINS)	AVERAGE QUEUE (VEH)	MAIN ROUTE		SITE
	DEMAND FLOW	PCT HEAVY		MAIN ROUTE	'DIVER TED'			WITHOUT WORK ZONE	WITH WORK ZONE	
MID-1 AM	782	0.0	3000	782	0	0.36	0	70.2	64.8	49.7
1-2 AM	597	0.0	3000	597	0	0.36	0	70.2	64.8	49.7
2-3 AM	485	0.0	3000	485	0	0.36	0	70.2	64.8	49.7
3-4 AM	436	0.0	3000	436	0	0.36	0	70.2	64.8	49.7
4-5 AM	504	0.0	3000	504	0	0.36	0	70.2	64.8	49.7
5-6 AM	811	0.0	3000	811	0	0.36	0	70.2	64.8	49.7
6-7 AM	1094	0.0	3000	1094	0	0.36	0	70.2	64.8	49.7
7-8 AM	1500	0.0	3000	1500	0	0.36	0	70.2	64.8	49.7
8-9 AM	2045	0.0	OFF	2045	0	0.00	0	69.5	69.5	69.5
9-10 AM	2894	0.0	OFF	2894	0	0.00	0	68.4	68.4	68.4
10-11 AM	3443	0.0	OFF	3443	0	0.00	0	67.8	67.8	67.8
11AM-NOON	3487	0.0	OFF	3487	0	0.00	0	67.7	67.7	67.7
NOON-1PM	3418	0.0	OFF	3418	0	0.00	0	67.8	67.8	67.8
1-2 PM	3372	0.0	OFF	3372	0	0.00	0	67.9	67.9	67.9
2-3 PM	3423	0.0	OFF	3423	0	0.00	0	67.8	67.8	67.8
3-4 PM	3346	0.0	OFF	3346	0	0.00	0	67.9	67.9	67.9
4-5 PM	3152	0.0	OFF	3152	0	0.00	0	68.1	68.1	68.1
5-6 PM	2850	0.0	OFF	2850	0	0.00	0	68.5	68.5	68.5
6-7 PM	2392	0.0	3000	2392	0	0.37	0	69.1	63.8	48.9
7-8 PM	2164	0.0	3000	2164	0	0.35	0	69.4	64.3	49.7
8-9 PM	1940	0.0	3000	1940	0	0.35	0	69.6	64.5	49.7
9-10 PM	1916	0.0	3000	1916	0	0.35	0	69.7	64.5	49.7
10-11 PM	1608	0.0	3000	1608	0	0.36	0	70.0	64.8	49.7
11PM-MID	1099	0.0	3000	1099	0	0.36	0	70.2	64.8	49.7

"OFF" INDICATES NO ROAD WORK (ALL LANES OPEN TO TRAFFIC)

*----- SITE BREAKDOWN DELAYS -----*	
BREAKDOWN DURATION (MINS)	0
RANGE OF QUEUE DELAY - MIN (VEH-H) MAX	0.0
AV BREAKDOWNS PER DAY	0.00
AV QUEUE DELAY/DAY (VEH-H)	0.0
AV TOTAL DELAY/DAY (VEH-H)	0.0

*----- SITE ACCIDENT DELAYS -----*	
BREAKDOWN DURATION (MINS)	0
RANGE OF QUEUE DELAY - MIN (VEH-H) MAX	0
AV BREAKDOWNS PER DAY	0
AV QUEUE DELAY/DAY (VEH-H)	0
AV TOTAL DELAY/DAY (VEH-H)	0

AVERAGE ACCIDENT NUMBERS (PIA/DAY)	
MAIN ROUTE WITHOUT WORKS	0.0396
MAIN ROUTE WITH WORKS	0.0384
'DIVERSION'	0.0000

PIA: Personal Injury Accidents

ECONOMIC IMPACT ON ROAD USERS	
ROAD USER COSTS PER DAY	\$1,425
CONGESTED HOURS PER DAY*	0

\*Delays Exceeding User-Specified Maximum

**IH 94: STH 50 TO STATE LINE (KENOSHA COUNTY)**  
**NIGHTTIME CLOSURE**  
**NO DIVERSION ROUTE (MAX QUEUE METHOD)**

**AUGUST**

Analyzed for 2009  
 Construction Season

**GRAPHICAL REPRESENTATION OF TRAFFIC MODEL INPUT AND OUTPUT**  
**SATURDAY EASTBOUND DIRECTION**

