

<b>IH 94: USH 18 TO CTH O (WAUKESHA COUNTY)</b> <b>OFF-PEAK DAY 2 LANE CLOSURE</b> <b>NO DIVERSION ROUTE (MAX QUEUE METHOD)</b>	<b>OCTOBER</b>
	Analyzed for 2009 Construction Season

**SUMMARY OF TRAFFIC MODEL OUTPUT**

SUNDAY WESTBOUND DIRECTION

TIME OF DAY	FLOWS AND CAPACITY IN VEH/HR						AVERAGE SPEEDS IN MPH				
	MAIN ROUTE		SITE CAPA CITY	FLOW		AV.DEL PER VEH (MINS)	AVERAGE QUEUE (VEH)	MAIN ROUTE		SITE	
	DEMAND FLOW	PCT HEAVY		MAIN ROUTE	'DIVER TED'			WITHOUT WORK ZONE	WITH WORK ZONE		
MID-1 AM	1031	0.0	OFF	1031	0	0.00	0	69.4	69.4	69.4	
1-2 AM	647	0.0	OFF	647	0	0.00	0	69.9	69.9	69.9	
2-3 AM	545	0.0	OFF	545	0	0.00	0	70.0	70.0	70.0	
3-4 AM	352	0.0	OFF	352	0	0.00	0	70.2	70.2	70.2	
4-5 AM	241	0.0	OFF	241	0	0.00	0	70.2	70.2	70.2	
5-6 AM	389	0.0	OFF	389	0	0.00	0	70.2	70.2	70.2	
6-7 AM	786	0.0	OFF	786	0	0.00	0	69.7	69.7	69.7	
7-8 AM	1036	0.0	OFF	1036	0	0.00	0	69.4	69.4	69.4	
8-9 AM	1347	0.0	OFF	1347	0	0.00	0	69.1	69.1	69.1	
9-10 AM	2080	0.0	1499	2004	76	7.76+	228	68.1	18.9	30.8	
10-11 AM	2866	0.0	1500	1485	1381	16.18+	398	67.2	10.6	32.0	
11AM-NOON	3513	0.0	1500	1500	2013	16.21+	400	66.4	10.6	31.6	
NOON-1PM	3385	0.0	1500	1500	1885	16.22+	400	66.5	10.6	31.6	
1-2 PM	3096	0.0	1500	1500	1596	16.24+	400	66.9	10.6	31.6	
2-3 PM	2980	0.0	1500	1500	1480	16.24+	400	67.0	10.6	31.6	
3-4 PM	3236	0.0	1500	1500	1736	16.23+	400	66.7	10.6	31.6	
4-5 PM	3524	0.0	1500	1500	2024	16.21+	400	66.4	10.6	31.6	
5-6 PM	3019	0.0	1500	1500	1519	16.24+	400	67.0	10.6	31.6	
6-7 PM	2645	0.0	1500	1500	1145	16.26+	400	67.4	10.6	31.6	
7-8 PM	2206	0.0	OFF	2206	0	0.34	31	68.0	61.0	61.0	
8-9 PM	1681	0.0	OFF	1681	0	0.00	0	68.6	68.6	68.6	
9-10 PM	1372	0.0	OFF	1372	0	0.00	0	69.1	69.1	69.1	
10-11 PM	1320	0.0	OFF	1320	0	0.00	0	69.1	69.1	69.1	
11PM-MID	639	0.0	OFF	639	0	0.00	0	69.9	69.9	69.9	

"OFF" INDICATES NO ROAD WORK (ALL LANES OPEN TO TRAFFIC)

+ INDICATES QUEUEING EXCEEDS USER-SPECIFIED MAXIMUM LIMIT

*----- SITE BREAKDOWN DELAYS -----*	
BREAKDOWN DURATION (MINS)	0
RANGE OF QUEUE DELAY - MIN (VEH-H) MAX	0.0
AV BREAKDOWNS PER DAY	0.00
AV QUEUE DELAY/DAY (VEH-H)	0.0
AV TOTAL DELAY/DAY (VEH-H)	0.0

*----- SITE ACCIDENT DELAYS -----*	
BREAKDOWN DURATION (MINS)	0
RANGE OF QUEUE DELAY - MIN (VEH-H) MAX	0
AV BREAKDOWNS PER DAY	0
AV QUEUE DELAY/DAY (VEH-H)	0
AV TOTAL DELAY/DAY (VEH-H)	0

AVERAGE ACCIDENT NUMBERS (PIA/DAY)	
MAIN ROUTE WITHOUT WORKS	0.0238
MAIN ROUTE WITH WORKS	0.0147
'DIVERSION'	0.0186
PIA: Personal Injury Accidents	
IMPACTS ON ROAD USERS	
ROAD USER COSTS PER DAY	\$131,865
CONGESTED HOURS PER DAY*	10

\*Delays Exceeding User-Specified Maximum

**IH 94: USH 18 TO CTH O (WAUKESHA COUNTY)**  
**OFF-PEAK DAY 2 LANE CLOSURE**  
**NO DIVERSION ROUTE (MAX QUEUE METHOD)**

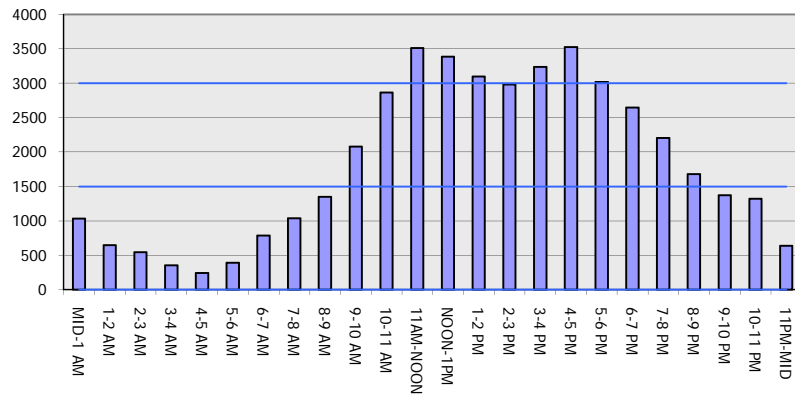
**OCTOBER**

Analyzed for 2009  
 Construction Season

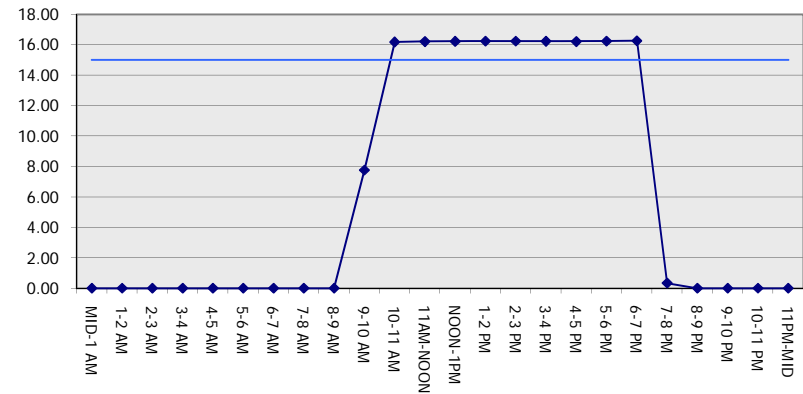
**GRAPHICAL REPRESENTATION OF TRAFFIC MODEL INPUT AND OUTPUT**

**SUNDAY WESTBOUND DIRECTION**

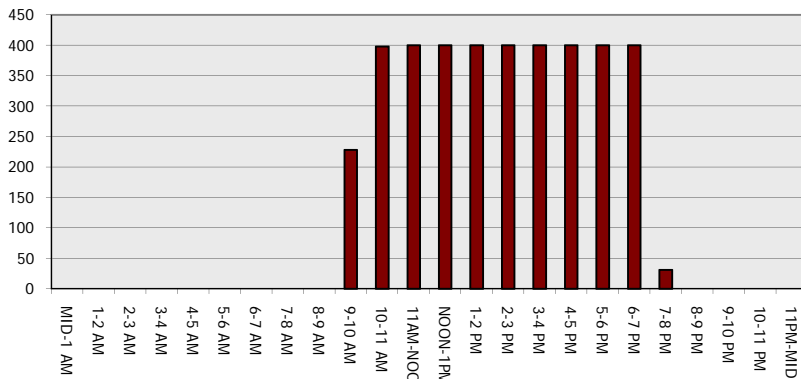
**Main Route - Traffic Demand (Vehicles Per Hour)**



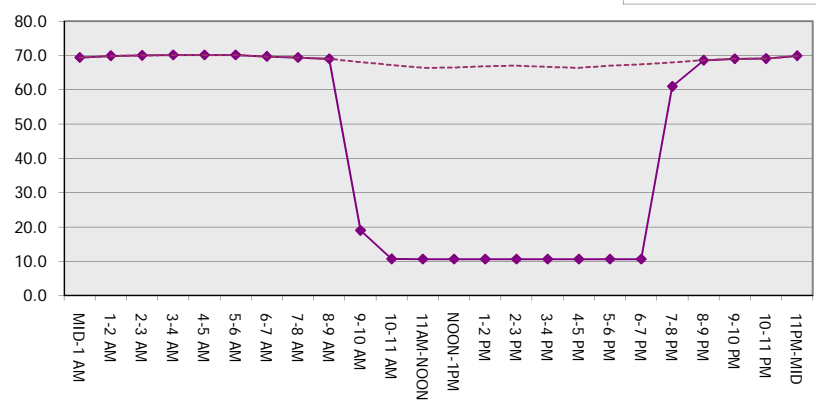
**Main Route Average Delay Per Vehicle (Minutes)**



**Main Route - Average Queue Length (Vehicles)**



**Main Route - Average Speed (MPH)**



<b>IH 94: USH 18 TO CTH O (WAUKESHA COUNTY)</b> <b>OFF-PEAK DAY 2 LANE CLOSURE</b> <b>NO DIVERSION ROUTE (MAX QUEUE METHOD)</b>	<b>OCTOBER</b>
	Analyzed for 2009 Construction Season

**SUMMARY OF TRAFFIC MODEL OUTPUT**

SUNDAY EASTBOUND DIRECTION

TIME OF DAY	FLOWS AND CAPACITY IN VEH/HR							AVERAGE SPEEDS IN MPH		
	MAIN ROUTE		SITE CAPA CITY	FLOW		AV.DEL PER VEH (MINS)	AVERAGE QUEUE (VEH)	MAIN ROUTE		SITE
	DEMAND FLOW	PCT HEAVY		MAIN ROUTE	'DIVER TED'			WITHOUT WORK ZONE	WITH WORK ZONE	
MID-1 AM	1016	0.0	OFF	1016	0	0.00	0	69.5	69.5	69.5
1-2 AM	526	0.0	OFF	526	0	0.00	0	70.0	70.0	70.0
2-3 AM	366	0.0	OFF	366	0	0.00	0	70.2	70.2	70.2
3-4 AM	240	0.0	OFF	240	0	0.00	0	70.2	70.2	70.2
4-5 AM	254	0.0	OFF	254	0	0.00	0	70.2	70.2	70.2
5-6 AM	351	0.0	OFF	351	0	0.00	0	70.2	70.2	70.2
6-7 AM	774	0.0	OFF	774	0	0.00	0	69.8	69.8	69.8
7-8 AM	1137	0.0	OFF	1137	0	0.00	0	69.3	69.3	69.3
8-9 AM	1463	0.0	OFF	1463	0	0.00	0	68.9	68.9	68.9
9-10 AM	2052	0.0	1499	2009	43	7.81+	228	68.2	18.9	30.8
10-11 AM	2714	0.0	1500	1449	1265	16.09+	395	67.4	10.7	31.8
11AM-NOON	3475	0.0	1500	1500	1975	16.27+	400	66.4	10.6	30.8
NOON-1PM	3526	0.0	1500	1500	2026	16.26+	400	66.3	10.6	30.8
1-2 PM	3310	0.0	1500	1500	1810	16.28+	400	66.6	10.6	30.8
2-3 PM	3383	0.0	1500	1500	1883	16.27+	400	66.5	10.6	30.8
3-4 PM	3454	0.0	1500	1500	1954	16.27+	400	66.4	10.6	30.8
4-5 PM	3189	0.0	1500	1500	1689	16.28+	400	66.8	10.6	30.8
5-6 PM	2984	0.0	1500	1500	1484	16.30+	400	67.0	10.6	30.8
6-7 PM	3459	0.0	1500	1500	1959	16.27+	400	66.4	10.6	30.8
7-8 PM	2668	0.0	OFF	2668	0	0.34	31	67.4	60.6	60.6
8-9 PM	1989	0.0	OFF	1989	0	0.00	0	68.2	68.2	68.2
9-10 PM	1647	0.0	OFF	1647	0	0.00	0	68.7	68.7	68.7
10-11 PM	1090	0.0	OFF	1090	0	0.00	0	69.4	69.4	69.4
11PM-MID	617	0.0	OFF	617	0	0.00	0	70.0	70.0	70.0

"OFF" INDICATES NO ROAD WORK (ALL LANES OPEN TO TRAFFIC)

+ INDICATES QUEUEING EXCEEDS USER-SPECIFIED MAXIMUM LIMIT

*----- SITE BREAKDOWN DELAYS -----*	
BREAKDOWN DURATION (MINS)	0
RANGE OF QUEUE DELAY - MIN (VEH-H) MAX	0.0
AV BREAKDOWNS PER DAY	0.00
AV QUEUE DELAY/DAY (VEH-H)	0.0
AV TOTAL DELAY/DAY (VEH-H)	0.0

*----- SITE ACCIDENT DELAYS -----*	
BREAKDOWN DURATION (MINS)	0
RANGE OF QUEUE DELAY - MIN (VEH-H) MAX	0
AV BREAKDOWNS PER DAY	0
AV QUEUE DELAY/DAY (VEH-H)	0
AV TOTAL DELAY/DAY (VEH-H)	0

AVERAGE ACCIDENT NUMBERS (PIA/DAY)	
MAIN ROUTE WITHOUT WORKS	0.0247
MAIN ROUTE WITH WORKS	0.0150
'DIVERSION'	0.0202

PIA: Personal Injury Accidents

ECONOMIC IMPACT ON ROAD USERS	
ROAD USER COSTS PER DAY	\$137,679
CONGESTED HOURS PER DAY*	10

\*Delays Exceeding User-Specified Maximum

**IH 94: USH 18 TO CTH O (WAUKESHA COUNTY)  
OFF-PEAK DAY 2 LANE CLOSURE  
NO DIVERSION ROUTE (MAX QUEUE METHOD)**

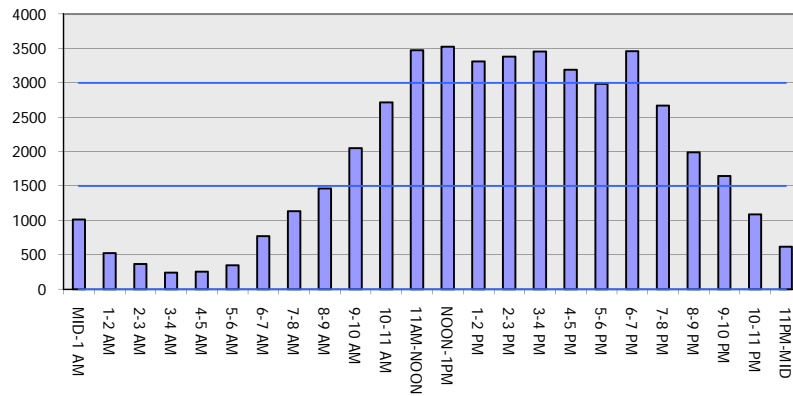
**OCTOBER**

Analyzed for 2009  
Construction Season

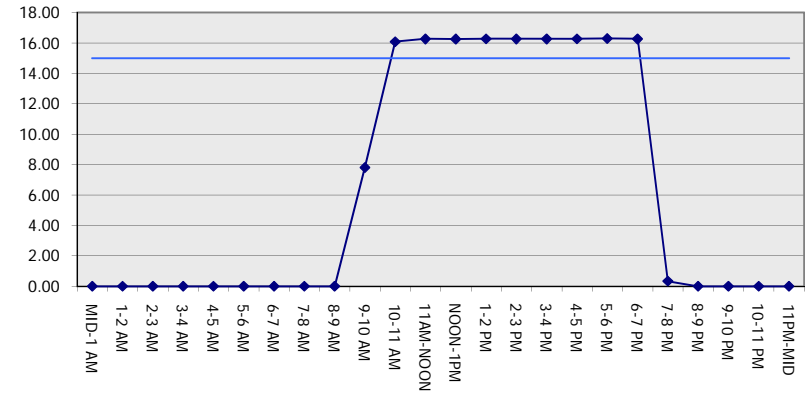
**GRAPHICAL REPRESENTATION OF TRAFFIC MODEL INPUT AND OUTPUT**

**SUNDAY EASTBOUND DIRECTION**

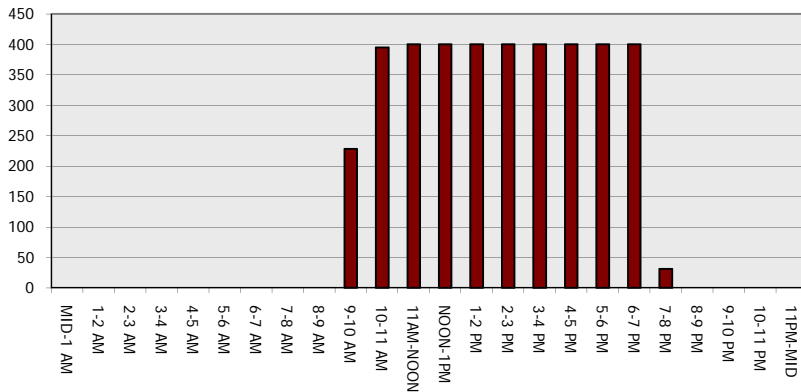
**Main Route - Traffic Demand (Vehicles Per Hour)**



**Main Route Average Delay Per Vehicle (Minutes)**



**Main Route - Average Queue Length (Vehicles)**



**Main Route - Average Speed (MPH)**

