

|   |  |
|---|--|
| <b>IH 94: USH 18 TO CTH O (WAUKESHA COUNTY)</b><br><b>OFF-PEAK DAY 2 LANE CLOSURE</b><br><b>NO DIVERSION ROUTE (MAX QUEUE METHOD)</b> | <b>OCTOBER</b>                           |
|   | Analyzed for 2009<br>Construction Season |

**SUMMARY OF TRAFFIC MODEL OUTPUT**

MON-THUR                      WESTBOUND DIRECTION

| TIME OF DAY | FLOWS AND CAPACITY IN VEH/HR |           |                |            |             |                       | AVERAGE SPEEDS IN MPH |                   |                |      |  |
|-------------|------------------------------|-----------|----------------|------------|-------------|-----------------------|-----------------------|-------------------|----------------|------|--|
|             | MAIN ROUTE                   |           | SITE CAPA CITY | FLOW       |             | AV.DEL PER VEH (MINS) | AVERAGE QUEUE (VEH)   | MAIN ROUTE        |                | SITE |  |
|             | DEMAND FLOW                  | PCT HEAVY |                | MAIN ROUTE | 'DIVER TED' |                       |                       | WITHOUT WORK ZONE | WITH WORK ZONE |      |  |
| MID-1 AM    | 452                          | 0.0       | OFF            | 452        | 0           | 0.00                  | 0                     | 70.2              | 70.2           | 70.2 |  |
| 1-2 AM      | 269                          | 0.0       | OFF            | 269        | 0           | 0.00                  | 0                     | 70.2              | 70.2           | 70.2 |  |
| 2-3 AM      | 251                          | 0.0       | OFF            | 251        | 0           | 0.00                  | 0                     | 70.2              | 70.2           | 70.2 |  |
| 3-4 AM      | 318                          | 0.0       | OFF            | 318        | 0           | 0.00                  | 0                     | 70.2              | 70.2           | 70.2 |  |
| 4-5 AM      | 655                          | 0.0       | OFF            | 655        | 0           | 0.00                  | 0                     | 69.9              | 69.9           | 69.9 |  |
| 5-6 AM      | 1849                         | 0.0       | OFF            | 1849       | 0           | 0.00                  | 0                     | 68.4              | 68.4           | 68.4 |  |
| 6-7 AM      | 3710                         | 0.0       | OFF            | 3710       | 0           | 0.00                  | 0                     | 65.5              | 65.5           | 65.5 |  |
| 7-8 AM      | 4603                         | 0.0       | OFF            | 4603       | 0           | 0.00                  | 0                     | 59.4              | 59.4           | 59.4 |  |
| 8-9 AM      | 4427                         | 0.0       | OFF            | 4427       | 0           | 0.00                  | 0                     | 60.6              | 60.6           | 60.6 |  |
| 9-10 AM     | 3354                         | 0.0       | OFF            | 3354       | 0           | 0.00                  | 0                     | 66.6              | 66.6           | 66.6 |  |
| 10-11 AM    | 3216                         | 0.0       | 1499           | 1550       | 1666        | 16.48+                | 412                   | 66.8              | 10.4           | 36.6 |  |
| 11AM-NOON   | 3541                         | 0.0       | 1499           | 1658       | 1883        | 14.39+                | 379                   | 66.3              | 11.7           | 35.8 |  |
| NOON-1PM    | 3811                         | 0.0       | 1499           | 1570       | 2241        | 15.82+                | 395                   | 64.8              | 10.7           | 34.0 |  |
| 1-2 PM      | 3943                         | 0.0       | 1500           | 1500       | 2443        | 15.93+                | 400                   | 63.9              | 10.7           | 34.7 |  |
| 2-3 PM      | 4473                         | 0.0       | 1500           | 1500       | 2973        | 15.74+                | 400                   | 60.3              | 10.7           | 34.7 |  |
| 3-4 PM      | 5305                         | 0.0       | OFF            | 5305       | 0           | 0.69                  | 55                    | 54.6              | 46.1           | 46.1 |  |
| 4-5 PM      | 5205                         | 0.0       | OFF            | 5205       | 0           | 0.00                  | 0                     | 55.3              | 55.3           | 55.3 |  |
| 5-6 PM      | 5009                         | 0.0       | OFF            | 5009       | 0           | 0.00                  | 0                     | 56.6              | 56.6           | 56.6 |  |
| 6-7 PM      | 4011                         | 0.0       | OFF            | 4011       | 0           | 0.00                  | 0                     | 63.5              | 63.5           | 63.5 |  |
| 7-8 PM      | 2662                         | 0.0       | OFF            | 2662       | 0           | 0.00                  | 0                     | 67.4              | 67.4           | 67.4 |  |
| 8-9 PM      | 2076                         | 0.0       | OFF            | 2076       | 0           | 0.00                  | 0                     | 68.1              | 68.1           | 68.1 |  |
| 9-10 PM     | 1863                         | 0.0       | OFF            | 1863       | 0           | 0.00                  | 0                     | 68.4              | 68.4           | 68.4 |  |
| 10-11 PM    | 1351                         | 0.0       | OFF            | 1351       | 0           | 0.00                  | 0                     | 69.1              | 69.1           | 69.1 |  |
| 11PM-MID    | 931                          | 0.0       | OFF            | 931        | 0           | 0.00                  | 0                     | 69.6              | 69.6           | 69.6 |  |

"OFF" INDICATES NO ROAD WORK (ALL LANES OPEN TO TRAFFIC)

+ INDICATES QUEUEING EXCEEDS USER-SPECIFIED MAXIMUM LIMIT

| *----- SITE BREAKDOWN DELAYS -----*    |      |
|--|------|
| BREAKDOWN DURATION (MINS)              | 0    |
| RANGE OF QUEUE DELAY - MIN (VEH-H) MAX | 0.0  |
| AV BREAKDOWNS PER DAY                  | 0.00 |
| AV QUEUE DELAY/DAY (VEH-H)             | 0.0  |
| AV TOTAL DELAY/DAY (VEH-H)             | 0.0  |

| *----- SITE ACCIDENT DELAYS -----*     |   |
|--|---|
| BREAKDOWN DURATION (MINS)              | 0 |
| RANGE OF QUEUE DELAY - MIN (VEH-H) MAX | 0 |
| AV BREAKDOWNS PER DAY                  | 0 |
| AV QUEUE DELAY/DAY (VEH-H)             | 0 |
| AV TOTAL DELAY/DAY (VEH-H)             | 0 |

| AVERAGE ACCIDENT NUMBERS (PIA/DAY)            |          |
|---|----------|
| MAIN ROUTE WITHOUT WORKS                      | 0.0364   |
| MAIN ROUTE WITH WORKS                         | 0.0298   |
| 'DIVERSION'                                   | 0.0140   |
| <small>PIA: Personal Injury Accidents</small> |          |
| IMPACTS ON ROAD USERS                         |          |
| ROAD USER COSTS PER DAY                       | \$65,439 |
| CONGESTED HOURS PER DAY*                      | 5        |

\*Delays Exceeding User-Specified Maximum

**IH 94: USH 18 TO CTH O (WAUKESHA COUNTY)**  
**OFF-PEAK DAY 2 LANE CLOSURE**  
**NO DIVERSION ROUTE (MAX QUEUE METHOD)**

**OCTOBER**

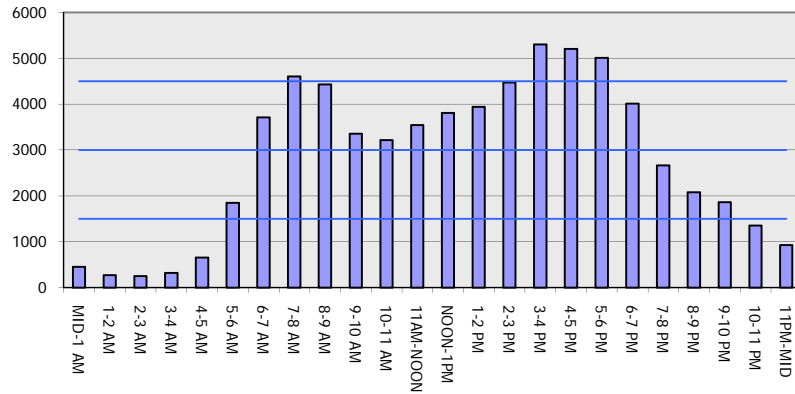
Analyzed for 2009  
 Construction Season

**GRAPHICAL REPRESENTATION OF TRAFFIC MODEL INPUT AND OUTPUT**

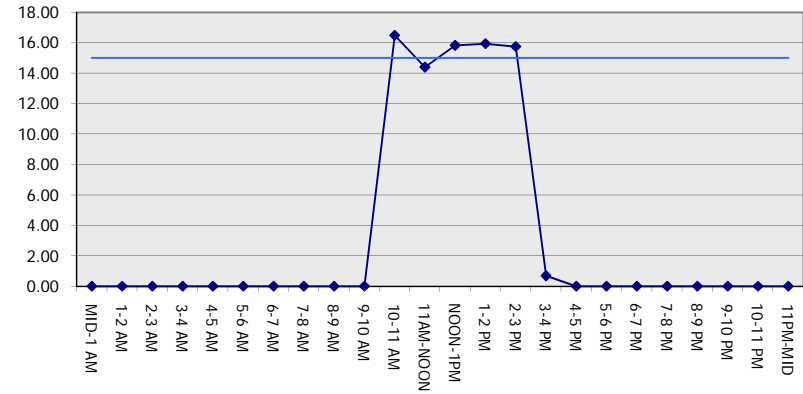
**MON-THUR**

**WESTBOUND DIRECTION**

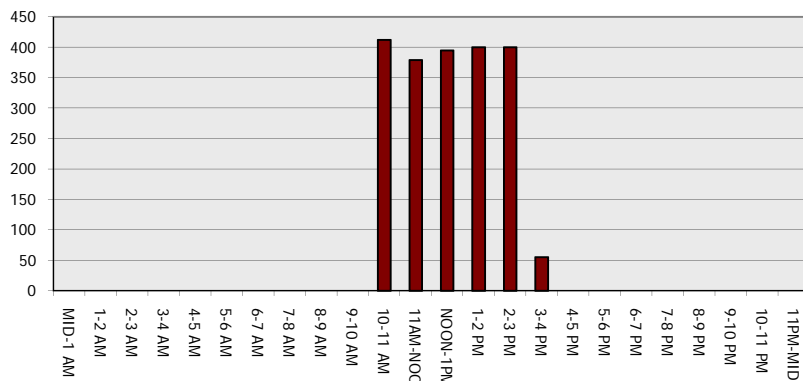
**Main Route - Traffic Demand (Vehicles Per Hour)**



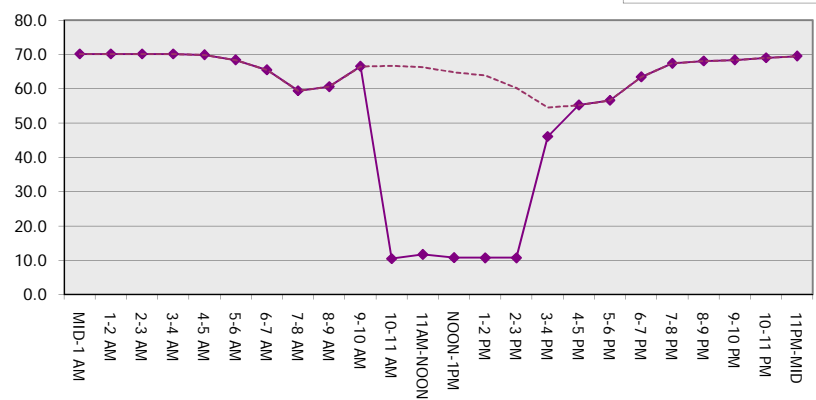
**Main Route Average Delay Per Vehicle (Minutes)**



**Main Route - Average Queue Length (Vehicles)**



**Main Route - Average Speed (MPH)**



|   |  |
|---|--|
| <b>IH 94: USH 18 TO CTH O (WAUKESHA COUNTY)</b><br><b>OFF-PEAK DAY 2 LANE CLOSURE</b><br><b>NO DIVERSION ROUTE (MAX QUEUE METHOD)</b> | <b>OCTOBER</b>                           |
|   | Analyzed for 2009<br>Construction Season |

**SUMMARY OF TRAFFIC MODEL OUTPUT**

MON-THUR                      EASTBOUND DIRECTION

| TIME OF DAY | FLOWS AND CAPACITY IN VEH/HR |           |                |            |             |                       | AVERAGE SPEEDS IN MPH |                   |                |      |
|-------------|------------------------------|-----------|----------------|------------|-------------|-----------------------|-----------------------|-------------------|----------------|------|
|             | MAIN ROUTE                   |           | SITE CAPA CITY | FLOW       |             | AV.DEL PER VEH (MINS) | AVERAGE QUEUE (VEH)   | MAIN ROUTE        |                | SITE |
|             | DEMAND FLOW                  | PCT HEAVY |                | MAIN ROUTE | 'DIVER TED' |                       |                       | WITHOUT WORK ZONE | WITH WORK ZONE |      |
| MID-1 AM    | 443                          | 0.0       | OFF            | 443        | 0           | 0.00                  | 0                     | 70.2              | 70.2           | 70.2 |
| 1-2 AM      | 279                          | 0.0       | OFF            | 279        | 0           | 0.00                  | 0                     | 70.2              | 70.2           | 70.2 |
| 2-3 AM      | 238                          | 0.0       | OFF            | 238        | 0           | 0.00                  | 0                     | 70.2              | 70.2           | 70.2 |
| 3-4 AM      | 295                          | 0.0       | OFF            | 295        | 0           | 0.00                  | 0                     | 70.2              | 70.2           | 70.2 |
| 4-5 AM      | 565                          | 0.0       | OFF            | 565        | 0           | 0.00                  | 0                     | 70.0              | 70.0           | 70.0 |
| 5-6 AM      | 1898                         | 0.0       | OFF            | 1898       | 0           | 0.00                  | 0                     | 68.4              | 68.4           | 68.4 |
| 6-7 AM      | 4645                         | 0.0       | OFF            | 4645       | 0           | 0.00                  | 0                     | 59.1              | 59.1           | 59.1 |
| 7-8 AM      | 4942                         | 0.0       | OFF            | 4942       | 0           | 0.00                  | 0                     | 57.1              | 57.1           | 57.1 |
| 8-9 AM      | 4649                         | 0.0       | OFF            | 4649       | 0           | 0.00                  | 0                     | 59.1              | 59.1           | 59.1 |
| 9-10 AM     | 3932                         | 0.0       | OFF            | 3932       | 0           | 0.00                  | 0                     | 64.0              | 64.0           | 64.0 |
| 10-11 AM    | 3501                         | 0.0       | 1499           | 1550       | 1951        | 16.46+                | 412                   | 66.4              | 10.4           | 36.6 |
| 11AM-NOON   | 3650                         | 0.0       | 1499           | 1673       | 1977        | 14.40+                | 378                   | 66.0              | 11.7           | 35.8 |
| NOON-1PM    | 3813                         | 0.0       | 1499           | 1514       | 2299        | 15.80+                | 398                   | 64.8              | 10.7           | 37.8 |
| 1-2 PM      | 3882                         | 0.0       | 1500           | 1500       | 2382        | 15.81+                | 400                   | 64.3              | 10.7           | 37.9 |
| 2-3 PM      | 4449                         | 0.0       | 1500           | 1500       | 2949        | 15.61+                | 400                   | 60.5              | 10.7           | 37.9 |
| 3-4 PM      | 5083                         | 0.0       | OFF            | 5083       | 0           | 0.42                  | 30                    | 56.1              | 50.4           | 50.4 |
| 4-5 PM      | 5073                         | 0.0       | OFF            | 5073       | 0           | 0.00                  | 0                     | 56.2              | 56.2           | 56.2 |
| 5-6 PM      | 4809                         | 0.0       | OFF            | 4809       | 0           | 0.00                  | 0                     | 58.0              | 58.0           | 58.0 |
| 6-7 PM      | 3571                         | 0.0       | OFF            | 3571       | 0           | 0.00                  | 0                     | 66.3              | 66.3           | 66.3 |
| 7-8 PM      | 2568                         | 0.0       | OFF            | 2568       | 0           | 0.00                  | 0                     | 67.6              | 67.6           | 67.6 |
| 8-9 PM      | 2278                         | 0.0       | OFF            | 2278       | 0           | 0.00                  | 0                     | 67.9              | 67.9           | 67.9 |
| 9-10 PM     | 2112                         | 0.0       | OFF            | 2112       | 0           | 0.00                  | 0                     | 68.1              | 68.1           | 68.1 |
| 10-11 PM    | 1491                         | 0.0       | OFF            | 1491       | 0           | 0.00                  | 0                     | 68.9              | 68.9           | 68.9 |
| 11PM-MID    | 970                          | 0.0       | OFF            | 970        | 0           | 0.00                  | 0                     | 69.6              | 69.6           | 69.6 |

"OFF" INDICATES NO ROAD WORK (ALL LANES OPEN TO TRAFFIC)

+ INDICATES QUEUEING EXCEEDS USER-SPECIFIED MAXIMUM LIMIT

| *----- SITE BREAKDOWN DELAYS -----*    |      |
|--|------|
| BREAKDOWN DURATION (MINS)              | 0    |
| RANGE OF QUEUE DELAY - MIN (VEH-H) MAX | 0.0  |
| AV BREAKDOWNS PER DAY                  | 0.00 |
| AV QUEUE DELAY/DAY (VEH-H)             | 0.0  |
| AV TOTAL DELAY/DAY (VEH-H)             | 0.0  |

| *----- SITE ACCIDENT DELAYS -----*     |   |
|--|---|
| BREAKDOWN DURATION (MINS)              | 0 |
| RANGE OF QUEUE DELAY - MIN (VEH-H) MAX | 0 |
| AV BREAKDOWNS PER DAY                  | 0 |
| AV QUEUE DELAY/DAY (VEH-H)             | 0 |
| AV TOTAL DELAY/DAY (VEH-H)             | 0 |

| AVERAGE ACCIDENT NUMBERS (PIA/DAY) |        |
|------------------------------------|--------|
| MAIN ROUTE WITHOUT WORKS           | 0.0374 |
| MAIN ROUTE WITH WORKS              | 0.0306 |
| 'DIVERSION'                        | 0.0145 |

PIA: Personal Injury Accidents

| ECONOMIC IMPACT ON ROAD USERS |          |
|-------------------------------|----------|
| ROAD USER COSTS PER DAY       | \$65,932 |
| CONGESTED HOURS PER DAY*      | 5        |

\*Delays Exceeding User-Specified Maximum

**IH 94: USH 18 TO CTH O (WAUKESHA COUNTY)  
OFF-PEAK DAY 2 LANE CLOSURE  
NO DIVERSION ROUTE (MAX QUEUE METHOD)**

**OCTOBER**

Analyzed for 2009  
Construction Season

**GRAPHICAL REPRESENTATION OF TRAFFIC MODEL INPUT AND OUTPUT  
MON-THUR EASTBOUND DIRECTION**

