

IH 94: USH 18 TO CTH O (WAUKESHA COUNTY) OFF-PEAK DAY CLOSURE NO DIVERSION ROUTE (MAX QUEUE METHOD)	OCTOBER Analyzed for 2009 Construction Season
--	--

SUMMARY OF TRAFFIC MODEL OUTPUT

MON-THUR WESTBOUND DIRECTION

TIME OF DAY	FLOWS AND CAPACITY IN VEH/HR						AVERAGE SPEEDS IN MPH				
	MAIN ROUTE		SITE CAPA CITY	FLOW		AV.DEL PER VEH (MINS)	AVERAGE QUEUE (VEH)	MAIN ROUTE		SITE	
	DEMAND FLOW	PCT HEAVY		MAIN ROUTE	'DIVER TED'			WITHOUT WORK ZONE	WITH WORK ZONE		
MID-1 AM	452	0.0	OFF	452	0	0.00	0	70.2	70.2	70.2	
1-2 AM	269	0.0	OFF	269	0	0.00	0	70.2	70.2	70.2	
2-3 AM	251	0.0	OFF	251	0	0.00	0	70.2	70.2	70.2	
3-4 AM	318	0.0	OFF	318	0	0.00	0	70.2	70.2	70.2	
4-5 AM	655	0.0	OFF	655	0	0.00	0	69.9	69.9	69.9	
5-6 AM	1849	0.0	OFF	1849	0	0.00	0	68.4	68.4	68.4	
6-7 AM	3710	0.0	OFF	3710	0	0.00	0	65.5	65.5	65.5	
7-8 AM	4603	0.0	OFF	4603	0	0.00	0	59.4	59.4	59.4	
8-9 AM	4427	0.0	OFF	4427	0	0.00	0	60.6	60.6	60.6	
9-10 AM	3354	0.0	OFF	3354	0	0.00	0	66.6	66.6	66.6	
10-11 AM	3216	0.0	2999	3216	0	2.40	102	66.8	37.4	37.3	
11AM-NOON	3541	0.0	3000	3541	0	8.63	467	66.3	17.6	37.3	
NOON-1PM	3811	0.0	2999	3043	768	15.89+	841	64.8	12.1	37.3	
1-2 PM	3943	0.0	3000	3022	921	15.82+	840	63.9	12.1	37.3	
2-3 PM	4473	0.0	3000	3031	1442	15.83+	854	60.3	12.0	37.3	
3-4 PM	5305	0.0	OFF	5305	0	5.41	505	54.6	22.3	22.3	
4-5 PM	5205	0.0	OFF	5205	0	0.23	15	55.3	52.0	52.0	
5-6 PM	5009	0.0	OFF	5009	0	0.00	0	56.6	56.6	56.6	
6-7 PM	4011	0.0	OFF	4011	0	0.00	0	63.5	63.5	63.5	
7-8 PM	2662	0.0	OFF	2662	0	0.00	0	67.4	67.4	67.4	
8-9 PM	2076	0.0	OFF	2076	0	0.00	0	68.1	68.1	68.1	
9-10 PM	1863	0.0	OFF	1863	0	0.00	0	68.4	68.4	68.4	
10-11 PM	1351	0.0	OFF	1351	0	0.00	0	69.1	69.1	69.1	
11PM-MID	931	0.0	OFF	931	0	0.00	0	69.6	69.6	69.6	

"OFF" INDICATES NO ROAD WORK (ALL LANES OPEN TO TRAFFIC)

+ INDICATES QUEUEING EXCEEDS USER-SPECIFIED MAXIMUM LIMIT

----- SITE BREAKDOWN DELAYS -----	
BREAKDOWN DURATION (MINS)	0
RANGE OF QUEUE DELAY - MIN (VEH-H) MAX	0.0
AV BREAKDOWNS PER DAY	0.00
AV QUEUE DELAY/DAY (VEH-H)	0.0
AV TOTAL DELAY/DAY (VEH-H)	0.0

----- SITE ACCIDENT DELAYS -----	
BREAKDOWN DURATION (MINS)	0
RANGE OF QUEUE DELAY - MIN (VEH-H) MAX	0
AV BREAKDOWNS PER DAY	0
AV QUEUE DELAY/DAY (VEH-H)	0
AV TOTAL DELAY/DAY (VEH-H)	0

AVERAGE ACCIDENT NUMBERS (PIA/DAY)	
MAIN ROUTE WITHOUT WORKS	0.0364
MAIN ROUTE WITH WORKS	0.0337
'DIVERSION'	0.0039
PIA: Personal Injury Accidents	
IMPACTS ON ROAD USERS	
ROAD USER COSTS PER DAY	\$51,596
CONGESTED HOURS PER DAY*	3

*Delays Exceeding User-Specified Maximum

**IH 94: USH 18 TO CTH O (WAUKESHA COUNTY)
OFF-PEAK DAY CLOSURE
NO DIVERSION ROUTE (MAX QUEUE METHOD)**

OCTOBER

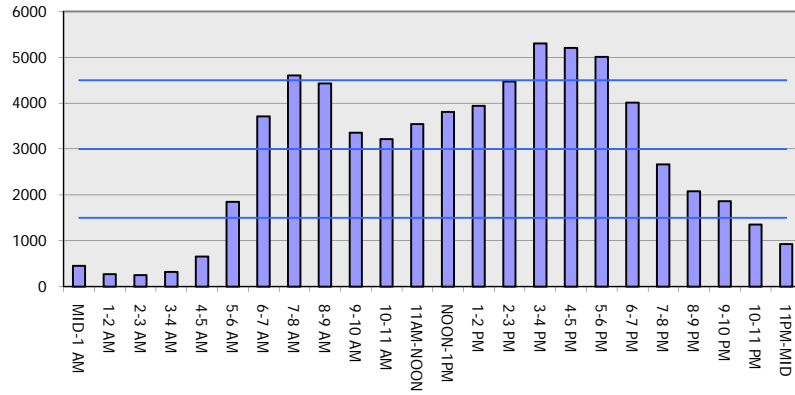
Analyzed for 2009
Construction Season

GRAPHICAL REPRESENTATION OF TRAFFIC MODEL INPUT AND OUTPUT

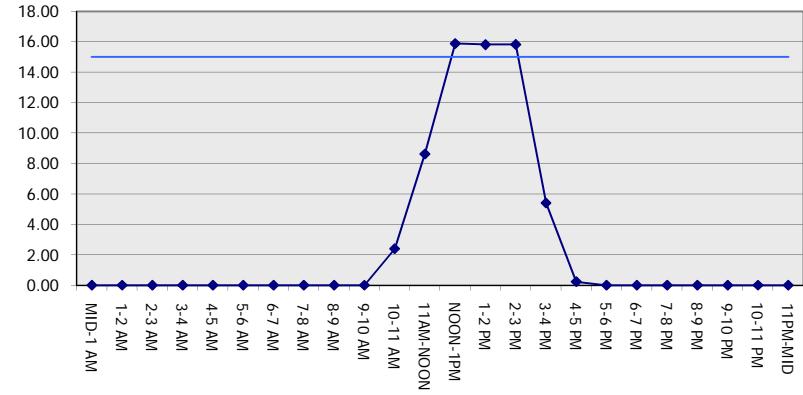
MON-THUR

WESTBOUND DIRECTION

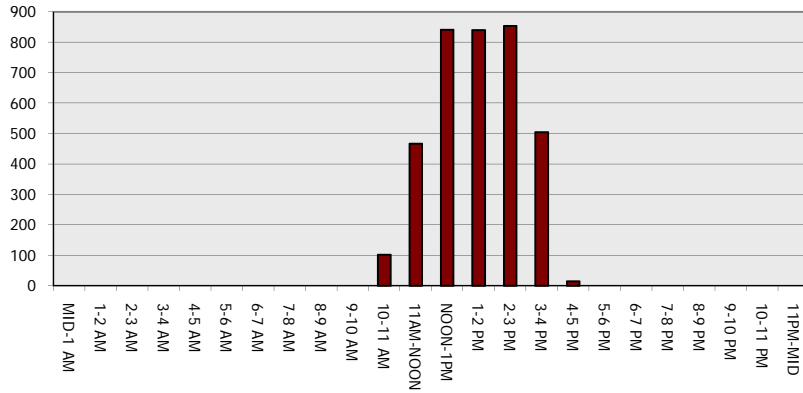
Main Route - Traffic Demand (Vehicles Per Hour)



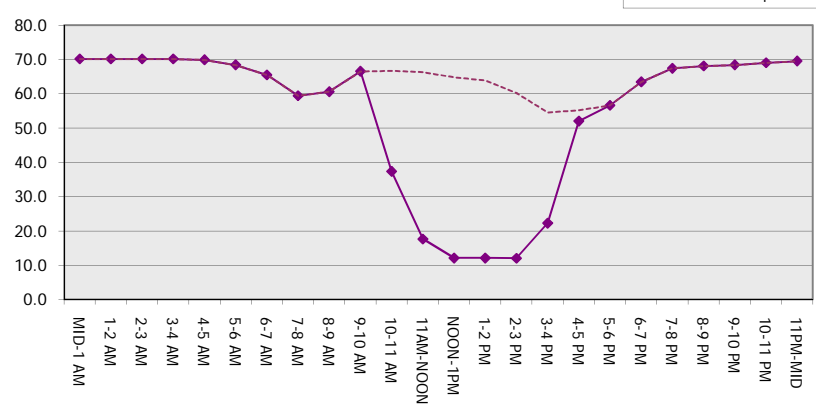
Main Route Average Delay Per Vehicle (Minutes)



Main Route - Average Queue Length (Vehicles)



Main Route - Average Speed (MPH)



IH 94: USH 18 TO CTH O (WAUKESHA COUNTY) OFF-PEAK DAY CLOSURE NO DIVERSION ROUTE (MAX QUEUE METHOD)	OCTOBER
	Analyzed for 2009 Construction Season

SUMMARY OF TRAFFIC MODEL OUTPUT

MON-THUR EASTBOUND DIRECTION

TIME OF DAY	FLOWS AND CAPACITY IN VEH/HR						AVERAGE SPEEDS IN MPH			
	MAIN ROUTE		SITE CAPA CITY	FLOW		AV.DEL PER VEH (MINS)	AVERAGE QUEUE (VEH)	MAIN ROUTE		SITE
	DEMAND FLOW	PCT HEAVY		MAIN ROUTE	'DIVER TED'			WITHOUT WORK ZONE	WITH WORK ZONE	
MID-1 AM	443	0.0	OFF	443	0	0.00	0	70.2	70.2	70.2
1-2 AM	279	0.0	OFF	279	0	0.00	0	70.2	70.2	70.2
2-3 AM	238	0.0	OFF	238	0	0.00	0	70.2	70.2	70.2
3-4 AM	295	0.0	OFF	295	0	0.00	0	70.2	70.2	70.2
4-5 AM	565	0.0	OFF	565	0	0.00	0	70.0	70.0	70.0
5-6 AM	1898	0.0	OFF	1898	0	0.00	0	68.4	68.4	68.4
6-7 AM	4645	0.0	OFF	4645	0	0.00	0	59.1	59.1	59.1
7-8 AM	4942	0.0	OFF	4942	0	0.00	0	57.1	57.1	57.1
8-9 AM	4649	0.0	OFF	4649	0	0.00	0	59.1	59.1	59.1
9-10 AM	3932	0.0	OFF	3932	0	0.00	0	64.0	64.0	64.0
10-11 AM	3501	0.0	2999	3501	0	4.79	259	66.4	26.0	37.3
11AM-NOON	3650	0.0	3000	3309	341	14.06+	746	66.0	12.9	37.3
NOON-1PM	3813	0.0	3000	3006	807	15.83+	838	64.8	12.2	37.3
1-2 PM	3882	0.0	3000	3006	876	15.81+	839	64.3	12.2	37.3
2-3 PM	4449	0.0	3000	3033	1416	15.84+	853	60.5	12.0	37.3
3-4 PM	5083	0.0	OFF	5083	0	4.42	399	56.1	25.3	25.3
4-5 PM	5073	0.0	OFF	5073	0	0.00	0	56.2	56.2	56.2
5-6 PM	4809	0.0	OFF	4809	0	0.00	0	58.0	58.0	58.0
6-7 PM	3571	0.0	OFF	3571	0	0.00	0	66.3	66.3	66.3
7-8 PM	2568	0.0	OFF	2568	0	0.00	0	67.6	67.6	67.6
8-9 PM	2278	0.0	OFF	2278	0	0.00	0	67.9	67.9	67.9
9-10 PM	2112	0.0	OFF	2112	0	0.00	0	68.1	68.1	68.1
10-11 PM	1491	0.0	OFF	1491	0	0.00	0	68.9	68.9	68.9
11PM-MID	970	0.0	OFF	970	0	0.00	0	69.6	69.6	69.6

"OFF" INDICATES NO ROAD WORK (ALL LANES OPEN TO TRAFFIC)

+ INDICATES QUEUEING EXCEEDS USER-SPECIFIED MAXIMUM LIMIT

----- SITE BREAKDOWN DELAYS -----	
BREAKDOWN DURATION (MINS)	0
RANGE OF QUEUE DELAY - MIN (VEH-H) MAX	0.0
AV BREAKDOWNS PER DAY	0.00
AV QUEUE DELAY/DAY (VEH-H)	0.0
AV TOTAL DELAY/DAY (VEH-H)	0.0

----- SITE ACCIDENT DELAYS -----	
BREAKDOWN DURATION (MINS)	0
RANGE OF QUEUE DELAY - MIN (VEH-H) MAX	0
AV BREAKDOWNS PER DAY	0
AV QUEUE DELAY/DAY (VEH-H)	0
AV TOTAL DELAY/DAY (VEH-H)	0

AVERAGE ACCIDENT NUMBERS (PIA/DAY)	
MAIN ROUTE WITHOUT WORKS	0.0374
MAIN ROUTE WITH WORKS	0.0345
'DIVERSION'	0.0043
<small>PIA: Personal Injury Accidents</small>	
ECONOMIC IMPACT ON ROAD USERS	
ROAD USER COSTS PER DAY	\$55,702
CONGESTED HOURS PER DAY*	4

*Delays Exceeding User-Specified Maximum

**IH 94: USH 18 TO CTH O (WAUKESHA COUNTY)
OFF-PEAK DAY CLOSURE
NO DIVERSION ROUTE (MAX QUEUE METHOD)**

OCTOBER

Analyzed for 2009
Construction Season

**GRAPHICAL REPRESENTATION OF TRAFFIC MODEL INPUT AND OUTPUT
MON-THUR EASTBOUND DIRECTION**

