

IH 94: USH 18 TO CTH O (WAUKESHA COUNTY) OFF-PEAK DAY 2 LANE CLOSURE NO DIVERSION ROUTE (MAX QUEUE METHOD)	OCTOBER
	Analyzed for 2009 Construction Season

SUMMARY OF TRAFFIC MODEL OUTPUT

FRIDAY WESTBOUND DIRECTION

TIME OF DAY	FLOWS AND CAPACITY IN VEH/HR						AVERAGE SPEEDS IN MPH				
	MAIN ROUTE		SITE CAPA CITY	FLOW		AV.DEL PER VEH (MINS)	AVERAGE QUEUE (VEH)	MAIN ROUTE		SITE	
	DEMAND FLOW	PCT HEAVY		MAIN ROUTE	'DIVER TED'			WITHOUT WORK ZONE	WITH WORK ZONE		
MID-1 AM	325	0.0	OFF	325	0	0.00	0	70.2	70.2	70.2	
1-2 AM	239	0.0	OFF	239	0	0.00	0	70.2	70.2	70.2	
2-3 AM	277	0.0	OFF	277	0	0.00	0	70.2	70.2	70.2	
3-4 AM	410	0.0	OFF	410	0	0.00	0	70.2	70.2	70.2	
4-5 AM	761	0.0	OFF	761	0	0.00	0	69.8	69.8	69.8	
5-6 AM	1991	0.0	OFF	1991	0	0.00	0	68.2	68.2	68.2	
6-7 AM	4201	0.0	OFF	4201	0	0.00	0	62.2	62.2	62.2	
7-8 AM	5309	0.0	OFF	5309	0	0.00	0	54.6	54.6	54.6	
8-9 AM	4681	0.0	OFF	4681	0	0.00	0	58.9	58.9	58.9	
9-10 AM	3795	0.0	OFF	3795	0	0.00	0	65.0	65.0	65.0	
10-11 AM	3944	0.0	1499	1550	2394	16.35+	412	63.9	10.4	36.6	
11AM-NOON	4367	0.0	1499	1775	2592	14.39+	379	61.0	11.5	35.6	
NOON-1PM	4629	0.0	1499	1500	3129	15.85+	399	59.2	10.6	31.4	
1-2 PM	4888	0.0	1500	1500	3388	15.75+	400	57.4	10.6	31.4	
2-3 PM	5378	0.0	1500	1500	3878	15.53+	400	54.1	10.6	31.4	
3-4 PM	5678	0.0	OFF	5678	0	1.81	164	52.0	35.6	35.6	
4-5 PM	5153	0.0	OFF	5153	0	0.00	0	55.6	55.6	55.6	
5-6 PM	4917	0.0	OFF	4917	0	0.00	0	57.3	57.3	57.3	
6-7 PM	4858	0.0	OFF	4858	0	0.00	0	57.7	57.7	57.7	
7-8 PM	3260	0.0	OFF	3260	0	0.00	0	66.7	66.7	66.7	
8-9 PM	2244	0.0	OFF	2244	0	0.00	0	67.9	67.9	67.9	
9-10 PM	2340	0.0	OFF	2340	0	0.00	0	67.8	67.8	67.8	
10-11 PM	1994	0.0	OFF	1994	0	0.00	0	68.2	68.2	68.2	
11PM-MID	1450	0.0	OFF	1450	0	0.00	0	68.9	68.9	68.9	

"OFF" INDICATES NO ROAD WORK (ALL LANES OPEN TO TRAFFIC)

+ INDICATES QUEUEING EXCEEDS USER-SPECIFIED MAXIMUM LIMIT

----- SITE BREAKDOWN DELAYS -----	
BREAKDOWN DURATION (MINS)	0
RANGE OF QUEUE DELAY - MIN (VEH-H) MAX	0.0
AV BREAKDOWNS PER DAY	0.00
AV QUEUE DELAY/DAY (VEH-H)	0.0
AV TOTAL DELAY/DAY (VEH-H)	0.0

----- SITE ACCIDENT DELAYS -----	
BREAKDOWN DURATION (MINS)	0
RANGE OF QUEUE DELAY - MIN (VEH-H) MAX	0
AV BREAKDOWNS PER DAY	0
AV QUEUE DELAY/DAY (VEH-H)	0
AV TOTAL DELAY/DAY (VEH-H)	0

AVERAGE ACCIDENT NUMBERS (PIA/DAY)	
MAIN ROUTE WITHOUT WORKS	0.0417
MAIN ROUTE WITH WORKS	0.0329
'DIVERSION'	0.0193
<small>PIA: Personal Injury Accidents</small>	
IMPACTS ON ROAD USERS	
ROAD USER COSTS PER DAY	\$81,760
CONGESTED HOURS PER DAY*	5

*Delays Exceeding User-Specified Maximum

IH 94: USH 18 TO CTH O (WAUKESHA COUNTY)
OFF-PEAK DAY 2 LANE CLOSURE
NO DIVERSION ROUTE (MAX QUEUE METHOD)

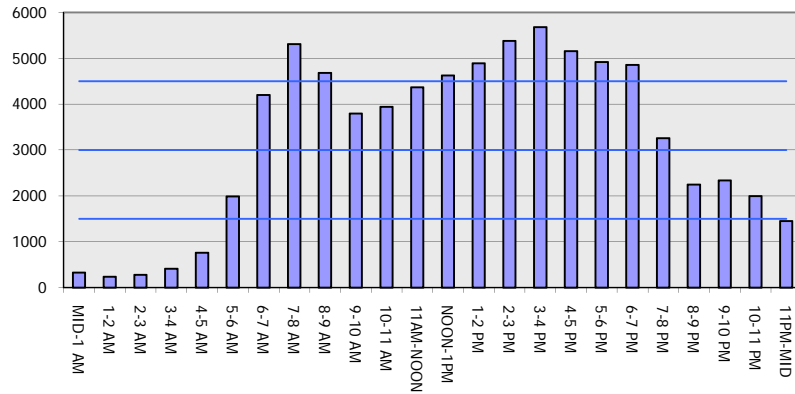
OCTOBER

Analyzed for 2009
 Construction Season

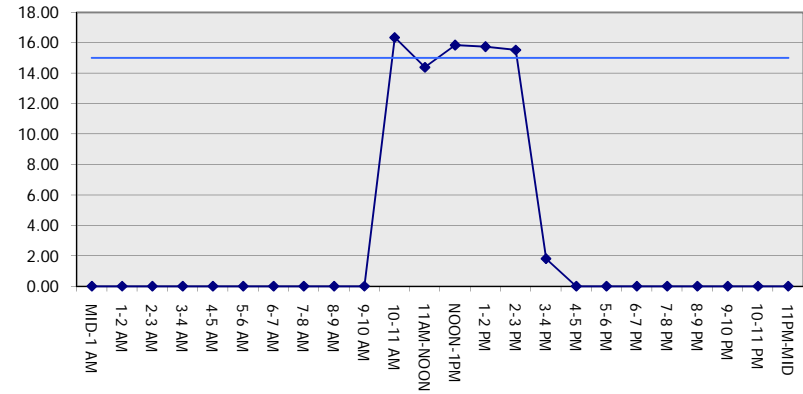
GRAPHICAL REPRESENTATION OF TRAFFIC MODEL INPUT AND OUTPUT

FRIDAY WESTBOUND DIRECTION

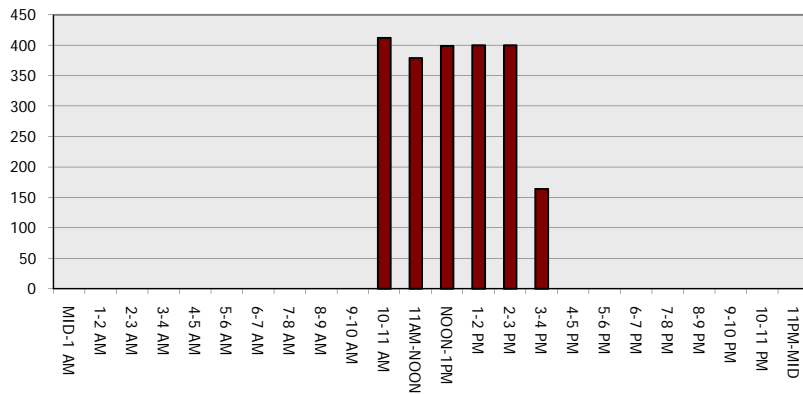
Main Route - Traffic Demand (Vehicles Per Hour)



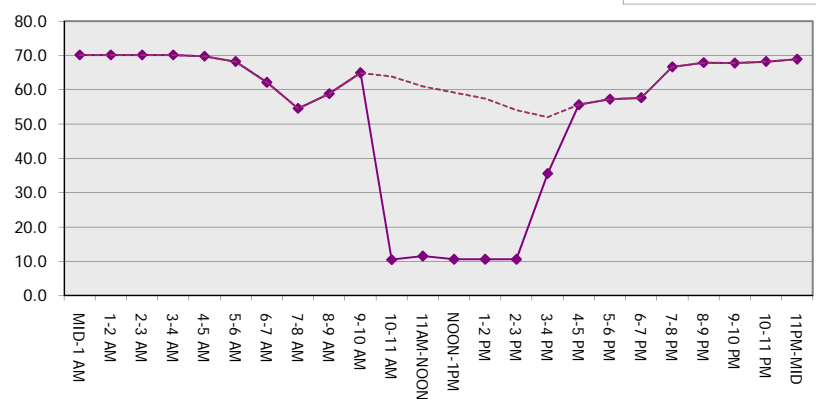
Main Route Average Delay Per Vehicle (Minutes)



Main Route - Average Queue Length (Vehicles)



Main Route - Average Speed (MPH)



IH 94: USH 18 TO CTH O (WAUKESHA COUNTY) OFF-PEAK DAY 2 LANE CLOSURE NO DIVERSION ROUTE (MAX QUEUE METHOD)	OCTOBER
	Analyzed for 2009 Construction Season

SUMMARY OF TRAFFIC MODEL OUTPUT

FRIDAY EASTBOUND DIRECTION

TIME OF DAY	FLOWS AND CAPACITY IN VEH/HR						AVERAGE SPEEDS IN MPH			
	MAIN ROUTE		SITE CAPA CITY	FLOW		AV.DEL PER VEH (MINS)	AVERAGE QUEUE (VEH)	MAIN ROUTE		SITE
	DEMAND FLOW	PCT HEAVY		MAIN ROUTE	'DIVER TED'			WITHOUT WORK ZONE	WITH WORK ZONE	
MID-1 AM	287	0.0	OFF	287	0	0.00	0	70.2	70.2	70.2
1-2 AM	205	0.0	OFF	205	0	0.00	0	70.2	70.2	70.2
2-3 AM	242	0.0	OFF	242	0	0.00	0	70.2	70.2	70.2
3-4 AM	369	0.0	OFF	369	0	0.00	0	70.2	70.2	70.2
4-5 AM	653	0.0	OFF	653	0	0.00	0	69.9	69.9	69.9
5-6 AM	2043	0.0	OFF	2043	0	0.00	0	68.2	68.2	68.2
6-7 AM	4894	0.0	OFF	4894	0	0.00	0	57.4	57.4	57.4
7-8 AM	5602	0.0	OFF	5602	0	0.00	0	52.6	52.6	52.6
8-9 AM	4732	0.0	OFF	4732	0	0.00	0	58.5	58.5	58.5
9-10 AM	4051	0.0	OFF	4051	0	0.00	0	63.2	63.2	63.2
10-11 AM	3747	0.0	1499	1550	2197	16.41+	412	65.3	10.4	36.6
11AM-NOON	4076	0.0	1499	1731	2345	14.39+	378	63.0	11.6	35.6
NOON-1PM	4304	0.0	1499	1500	2804	15.81+	399	61.5	10.7	34.5
1-2 PM	4448	0.0	1500	1500	2948	15.76+	400	60.5	10.7	34.5
2-3 PM	5135	0.0	1500	1500	3635	15.48+	400	55.8	10.7	34.5
3-4 PM	5455	0.0	OFF	5455	0	0.86	72	53.6	43.7	43.7
4-5 PM	5237	0.0	OFF	5237	0	0.00	0	55.1	55.1	55.1
5-6 PM	5000	0.0	OFF	5000	0	0.00	0	56.7	56.7	56.7
6-7 PM	4361	0.0	OFF	4361	0	0.00	0	61.0	61.0	61.0
7-8 PM	3424	0.0	OFF	3424	0	0.00	0	66.5	66.5	66.5
8-9 PM	2610	0.0	OFF	2610	0	0.00	0	67.5	67.5	67.5
9-10 PM	2636	0.0	OFF	2636	0	0.00	0	67.4	67.4	67.4
10-11 PM	2231	0.0	OFF	2231	0	0.00	0	67.9	67.9	67.9
11PM-MID	1594	0.0	OFF	1594	0	0.00	0	68.7	68.7	68.7

"OFF" INDICATES NO ROAD WORK (ALL LANES OPEN TO TRAFFIC)

+ INDICATES QUEUEING EXCEEDS USER-SPECIFIED MAXIMUM LIMIT

----- SITE BREAKDOWN DELAYS -----	
BREAKDOWN DURATION (MINS)	0
RANGE OF QUEUE DELAY - MIN (VEH-H) MAX	0.0
AV BREAKDOWNS PER DAY	0.00
AV QUEUE DELAY/DAY (VEH-H)	0.0
AV TOTAL DELAY/DAY (VEH-H)	0.0

----- SITE ACCIDENT DELAYS -----	
BREAKDOWN DURATION (MINS)	0
RANGE OF QUEUE DELAY - MIN (VEH-H) MAX	0
AV BREAKDOWNS PER DAY	0
AV QUEUE DELAY/DAY (VEH-H)	0
AV TOTAL DELAY/DAY (VEH-H)	0

AVERAGE ACCIDENT NUMBERS (PIA/DAY)	
MAIN ROUTE WITHOUT WORKS	0.0418
MAIN ROUTE WITH WORKS	0.0338
'DIVERSION'	0.0175

PIA: Personal Injury Accidents

ECONOMIC IMPACT ON ROAD USERS	
ROAD USER COSTS PER DAY	\$75,376
CONGESTED HOURS PER DAY*	5

*Delays Exceeding User-Specified Maximum

**IH 94: USH 18 TO CTH O (WAUKESHA COUNTY)
OFF-PEAK DAY 2 LANE CLOSURE
NO DIVERSION ROUTE (MAX QUEUE METHOD)**

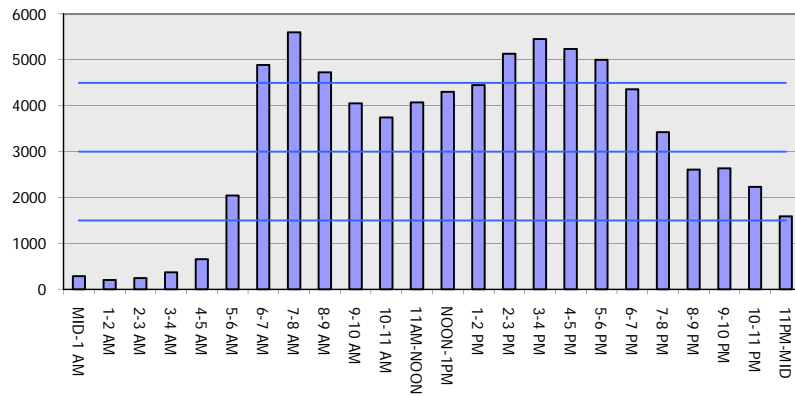
OCTOBER

Analyzed for 2009
Construction Season

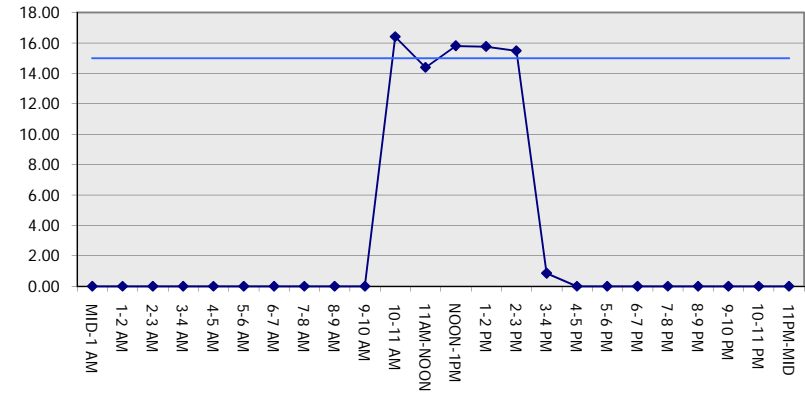
GRAPHICAL REPRESENTATION OF TRAFFIC MODEL INPUT AND OUTPUT

FRIDAY EASTBOUND DIRECTION

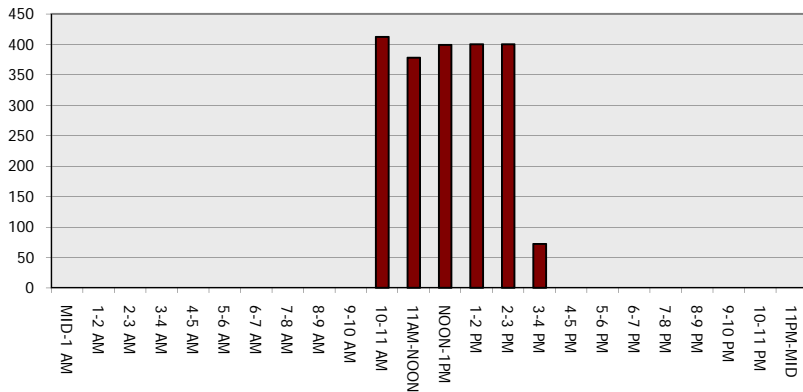
Main Route - Traffic Demand (Vehicles Per Hour)



Main Route Average Delay Per Vehicle (Minutes)



Main Route - Average Queue Length (Vehicles)



Main Route - Average Speed (MPH)

