

IH 94: USH 18 TO CTH O (WAUKESHA COUNTY) OFF-PEAK DAY CLOSURE NO DIVERSION ROUTE (MAX QUEUE METHOD)	AUGUST
	Analyzed for 2009 Construction Season

SUMMARY OF TRAFFIC MODEL OUTPUT

SATURDAY WESTBOUND DIRECTION

TIME OF DAY	FLOWS AND CAPACITY IN VEH/HR						AVERAGE SPEEDS IN MPH				
	MAIN ROUTE		SITE CAPA CITY	FLOW		AV.DEL PER VEH (MINS)	AVERAGE QUEUE (VEH)	MAIN ROUTE		SITE	
	DEMAND FLOW	PCT HEAVY		MAIN ROUTE	'DIVER TED'			WITHOUT WORK ZONE	WITH WORK ZONE		
MID-1 AM	699	0.0	OFF	699	0	0.00	0	69.9	69.9	69.9	
1-2 AM	630	0.0	OFF	630	0	0.00	0	69.9	69.9	69.9	
2-3 AM	579	0.0	OFF	579	0	0.00	0	70.0	70.0	70.0	
3-4 AM	419	0.0	OFF	419	0	0.00	0	70.2	70.2	70.2	
4-5 AM	501	0.0	OFF	501	0	0.00	0	70.1	70.1	70.1	
5-6 AM	621	0.0	OFF	621	0	0.00	0	70.0	70.0	70.0	
6-7 AM	969	0.0	OFF	969	0	0.00	0	69.6	69.6	69.6	
7-8 AM	1064	0.0	OFF	1064	0	0.00	0	69.4	69.4	69.4	
8-9 AM	2257	0.0	3000	2257	0	0.33	0	67.9	61.2	49.7	
9-10 AM	1968	0.0	3000	1968	0	0.34	0	68.3	61.4	49.7	
10-11 AM	2108	0.0	2999	2108	0	0.33	0	68.1	61.3	49.7	
11AM-NOON	3381	0.0	2999	3381	0	2.55	129	66.5	36.3	37.3	
NOON-1PM	4064	0.0	3000	3501	563	13.82+	749	63.1	13.0	37.3	
1-2 PM	3299	0.0	2999	2933	366	15.79+	830	66.6	12.2	37.3	
2-3 PM	2356	0.0	2999	2356	0	8.31	465	67.8	18.3	39.0	
3-4 PM	4194	0.0	3000	3569	625	11.06+	637	62.2	15.1	37.3	
4-5 PM	3816	0.0	3000	3052	764	15.90+	843	64.8	12.1	37.3	
5-6 PM	3421	0.0	3000	3010	411	15.89+	837	66.5	12.2	37.3	
6-7 PM	2946	0.0	OFF	2946	0	1.14	105	67.1	48.8	48.8	
7-8 PM	2465	0.0	OFF	2465	0	0.00	0	67.7	67.7	67.7	
8-9 PM	2245	0.0	OFF	2245	0	0.00	0	67.9	67.9	67.9	
9-10 PM	2868	0.0	OFF	2868	0	0.00	0	67.2	67.2	67.2	
10-11 PM	2017	0.0	OFF	2017	0	0.00	0	68.2	68.2	68.2	
11PM-MID	901	0.0	OFF	901	0	0.00	0	69.6	69.6	69.6	

"OFF" INDICATES NO ROAD WORK (ALL LANES OPEN TO TRAFFIC)

+ INDICATES QUEUEING EXCEEDS USER-SPECIFIED MAXIMUM LIMIT

----- SITE BREAKDOWN DELAYS -----	
BREAKDOWN DURATION (MINS)	0
RANGE OF QUEUE DELAY - MIN (VEH-H) MAX	0.0
AV BREAKDOWNS PER DAY	0.00
AV QUEUE DELAY/DAY (VEH-H)	0.0
AV TOTAL DELAY/DAY (VEH-H)	0.0

----- SITE ACCIDENT DELAYS -----	
BREAKDOWN DURATION (MINS)	0
RANGE OF QUEUE DELAY - MIN (VEH-H) MAX	0
AV BREAKDOWNS PER DAY	0
AV QUEUE DELAY/DAY (VEH-H)	0
AV TOTAL DELAY/DAY (VEH-H)	0

AVERAGE ACCIDENT NUMBERS (PIA/DAY)	
MAIN ROUTE WITHOUT WORKS	0.0269
MAIN ROUTE WITH WORKS	0.0236
'DIVERSION'	0.0034
PIA: Personal Injury Accidents	
IMPACTS ON ROAD USERS	
ROAD USER COSTS PER DAY	\$81,794
CONGESTED HOURS PER DAY*	5

*Delays Exceeding User-Specified Maximum

**IH 94: USH 18 TO CTH O (WAUKESHA COUNTY)
OFF-PEAK DAY CLOSURE
NO DIVERSION ROUTE (MAX QUEUE METHOD)**

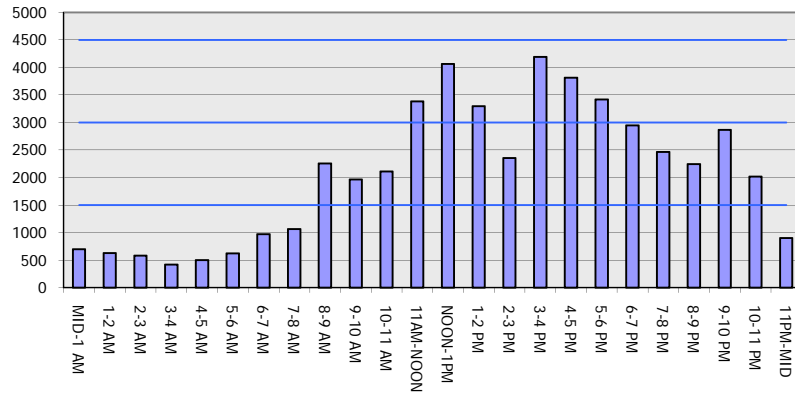
AUGUST

Analyzed for 2009
Construction Season

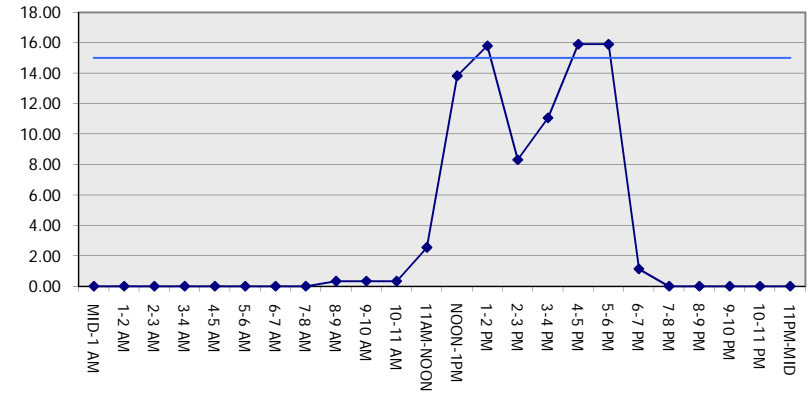
GRAPHICAL REPRESENTATION OF TRAFFIC MODEL INPUT AND OUTPUT

SATURDAY WESTBOUND DIRECTION

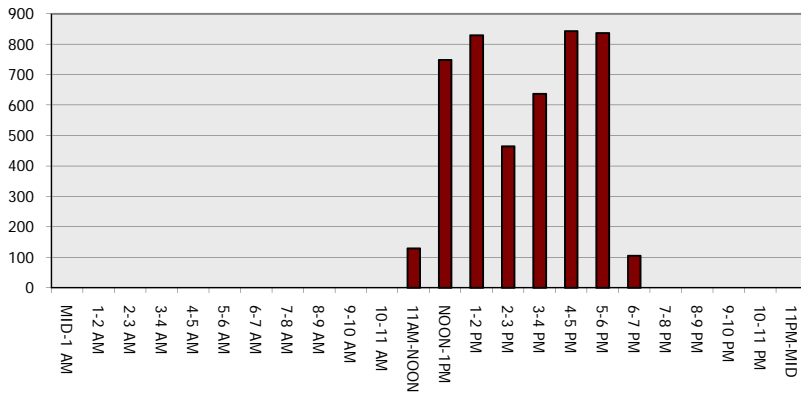
Main Route - Traffic Demand (Vehicles Per Hour)



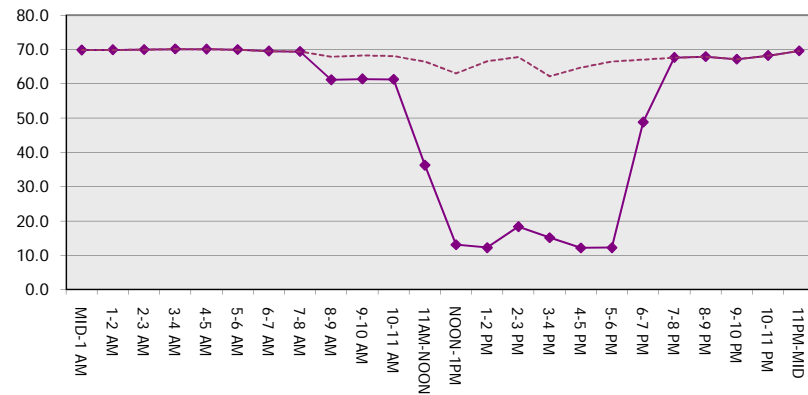
Main Route Average Delay Per Vehicle (Minutes)



Main Route - Average Queue Length (Vehicles)



Main Route - Average Speed (MPH)



IH 94: USH 18 TO CTH O (WAUKESHA COUNTY) OFF-PEAK DAY CLOSURE NO DIVERSION ROUTE (MAX QUEUE METHOD)	AUGUST
	Analyzed for 2009 Construction Season

SUMMARY OF TRAFFIC MODEL OUTPUT

SATURDAY EASTBOUND DIRECTION

TIME OF DAY	FLOWS AND CAPACITY IN VEH/HR							AVERAGE SPEEDS IN MPH		
	MAIN ROUTE		SITE CAPA CITY	FLOW		AV.DEL PER VEH (MINS)	AVERAGE QUEUE (VEH)	MAIN ROUTE		SITE
	DEMAND FLOW	PCT HEAVY		MAIN ROUTE	'DIVER TED'			WITHOUT WORK ZONE	WITH WORK ZONE	
MID-1 AM	488	0.0	OFF	488	0	0.00	0	70.1	70.1	70.1
1-2 AM	447	0.0	OFF	447	0	0.00	0	70.2	70.2	70.2
2-3 AM	320	0.0	OFF	320	0	0.00	0	70.2	70.2	70.2
3-4 AM	279	0.0	OFF	279	0	0.00	0	70.2	70.2	70.2
4-5 AM	444	0.0	OFF	444	0	0.00	0	70.2	70.2	70.2
5-6 AM	557	0.0	OFF	557	0	0.00	0	70.0	70.0	70.0
6-7 AM	774	0.0	OFF	774	0	0.00	0	69.8	69.8	69.8
7-8 AM	840	0.0	OFF	840	0	0.00	0	69.7	69.7	69.7
8-9 AM	1984	0.0	3000	1984	0	0.33	0	68.2	61.4	49.7
9-10 AM	1839	0.0	3000	1839	0	0.34	0	68.4	61.5	49.7
10-11 AM	2074	0.0	2999	2074	0	0.33	0	68.2	61.3	49.7
11AM-NOON	3684	0.0	2999	3684	0	4.58	278	65.7	26.5	37.3
NOON-1PM	4118	0.0	2999	3129	988	15.80+	844	62.7	12.1	37.3
1-2 PM	3414	0.0	3000	3005	409	15.89+	837	66.5	12.2	37.3
2-3 PM	2477	0.0	2999	2477	0	9.90	529	67.6	16.1	37.3
3-4 PM	4316	0.0	3000	3561	755	12.89+	714	61.4	13.5	37.3
4-5 PM	4218	0.0	3000	2987	1231	15.79+	845	62.0	12.1	37.3
5-6 PM	3824	0.0	3000	2999	825	15.83+	838	64.7	12.2	37.3
6-7 PM	3355	0.0	OFF	3355	0	1.56	134	66.6	44.1	44.1
7-8 PM	2818	0.0	OFF	2818	0	0.00	0	67.3	67.3	67.3
8-9 PM	2504	0.0	OFF	2504	0	0.00	0	67.6	67.6	67.6
9-10 PM	2593	0.0	OFF	2593	0	0.00	0	67.5	67.5	67.5
10-11 PM	1859	0.0	OFF	1859	0	0.00	0	68.4	68.4	68.4
11PM-MID	606	0.0	OFF	606	0	0.00	0	70.0	70.0	70.0

"OFF" INDICATES NO ROAD WORK (ALL LANES OPEN TO TRAFFIC)

+ INDICATES QUEUEING EXCEEDS USER-SPECIFIED MAXIMUM LIMIT

----- SITE BREAKDOWN DELAYS -----	
BREAKDOWN DURATION (MINS)	0
RANGE OF QUEUE DELAY - MIN (VEH-H) MAX	0.0
AV BREAKDOWNS PER DAY	0.00
AV QUEUE DELAY/DAY (VEH-H)	0.0
AV TOTAL DELAY/DAY (VEH-H)	0.0

----- SITE ACCIDENT DELAYS -----	
BREAKDOWN DURATION (MINS)	0
RANGE OF QUEUE DELAY - MIN (VEH-H) MAX	0
AV BREAKDOWNS PER DAY	0
AV QUEUE DELAY/DAY (VEH-H)	0
AV TOTAL DELAY/DAY (VEH-H)	0

AVERAGE ACCIDENT NUMBERS (PIA/DAY)	
MAIN ROUTE WITHOUT WORKS	0.0270
MAIN ROUTE WITH WORKS	0.0228
'DIVERSION'	0.0053

PIA: Personal Injury Accidents

ECONOMIC IMPACT ON ROAD USERS	
ROAD USER COSTS PER DAY	\$94,557
CONGESTED HOURS PER DAY*	5

*Delays Exceeding User-Specified Maximum

**IH 94: USH 18 TO CTH O (WAUKESHA COUNTY)
OFF-PEAK DAY CLOSURE
NO DIVERSION ROUTE (MAX QUEUE METHOD)**

AUGUST
Analyzed for 2009
Construction Season

GRAPHICAL REPRESENTATION OF TRAFFIC MODEL INPUT AND OUTPUT
SATURDAY EASTBOUND DIRECTION

