

| | |
|--|--|
| IH 94: USH 18 TO CTH O (WAUKESHA COUNTY) OFF-PEAK DAY CLOSURE NO DIVERSION ROUTE (MAX QUEUE METHOD) | AUGUST |
| | Analyzed for 2009 Construction Season |

SUMMARY OF TRAFFIC MODEL OUTPUT

MON-THUR WESTBOUND DIRECTION

| TIME OF DAY | FLOWS AND CAPACITY IN VEH/HR | | | | | | AVERAGE SPEEDS IN MPH | | | |
|-------------|------------------------------|-----------|----------------|------------|-------------|-----------------------|-----------------------|-------------------|----------------|------|
| | MAIN ROUTE | | SITE CAPA CITY | FLOW | | AV.DEL PER VEH (MINS) | AVERAGE QUEUE (VEH) | MAIN ROUTE | | SITE |
| | DEMAND FLOW | PCT HEAVY | | MAIN ROUTE | 'DIVER TED' | | | WITHOUT WORK ZONE | WITH WORK ZONE | |
| MID-1 AM | 560 | 0.0 | OFF | 560 | 0 | 0.00 | 0 | 70.0 | 70.0 | 70.0 |
| 1-2 AM | 331 | 0.0 | OFF | 331 | 0 | 0.00 | 0 | 70.2 | 70.2 | 70.2 |
| 2-3 AM | 287 | 0.0 | OFF | 287 | 0 | 0.00 | 0 | 70.2 | 70.2 | 70.2 |
| 3-4 AM | 370 | 0.0 | OFF | 370 | 0 | 0.00 | 0 | 70.2 | 70.2 | 70.2 |
| 4-5 AM | 761 | 0.0 | OFF | 761 | 0 | 0.00 | 0 | 69.8 | 69.8 | 69.8 |
| 5-6 AM | 1970 | 0.0 | OFF | 1970 | 0 | 0.00 | 0 | 68.3 | 68.3 | 68.3 |
| 6-7 AM | 3792 | 0.0 | OFF | 3792 | 0 | 0.00 | 0 | 65.0 | 65.0 | 65.0 |
| 7-8 AM | 4616 | 0.0 | OFF | 4616 | 0 | 0.00 | 0 | 59.3 | 59.3 | 59.3 |
| 8-9 AM | 4442 | 0.0 | OFF | 4442 | 0 | 0.00 | 0 | 60.5 | 60.5 | 60.5 |
| 9-10 AM | 3425 | 0.0 | OFF | 3425 | 0 | 0.00 | 0 | 66.5 | 66.5 | 66.5 |
| 10-11 AM | 3188 | 0.0 | 2999 | 3188 | 0 | 2.19 | 88 | 66.8 | 38.9 | 37.3 |
| 11AM-NOON | 3601 | 0.0 | 3000 | 3601 | 0 | 8.57 | 471 | 66.3 | 17.8 | 37.3 |
| NOON-1PM | 3757 | 0.0 | 2999 | 3013 | 744 | 15.85+ | 838 | 65.2 | 12.2 | 37.3 |
| 1-2 PM | 3903 | 0.0 | 3000 | 3016 | 887 | 15.82+ | 840 | 64.2 | 12.1 | 37.3 |
| 2-3 PM | 4186 | 0.0 | 3000 | 3026 | 1160 | 15.78+ | 844 | 62.3 | 12.1 | 37.3 |
| 3-4 PM | 4504 | 0.0 | OFF | 4504 | 0 | 2.74 | 237 | 60.1 | 33.2 | 33.2 |
| 4-5 PM | 4683 | 0.0 | OFF | 4683 | 0 | 0.00 | 0 | 58.9 | 58.9 | 58.9 |
| 5-6 PM | 4609 | 0.0 | OFF | 4609 | 0 | 0.00 | 0 | 59.4 | 59.4 | 59.4 |
| 6-7 PM | 4287 | 0.0 | OFF | 4287 | 0 | 0.00 | 0 | 61.5 | 61.5 | 61.5 |
| 7-8 PM | 3079 | 0.0 | OFF | 3079 | 0 | 0.00 | 0 | 66.9 | 66.9 | 66.9 |
| 8-9 PM | 2522 | 0.0 | OFF | 2522 | 0 | 0.00 | 0 | 67.6 | 67.6 | 67.6 |
| 9-10 PM | 2191 | 0.0 | OFF | 2191 | 0 | 0.00 | 0 | 68.0 | 68.0 | 68.0 |
| 10-11 PM | 1920 | 0.0 | OFF | 1920 | 0 | 0.00 | 0 | 68.4 | 68.4 | 68.4 |
| 11PM-MID | 1233 | 0.0 | OFF | 1233 | 0 | 0.00 | 0 | 69.2 | 69.2 | 69.2 |

"OFF" INDICATES NO ROAD WORK (ALL LANES OPEN TO TRAFFIC)

+ INDICATES QUEUEING EXCEEDS USER-SPECIFIED MAXIMUM LIMIT

| *----- SITE BREAKDOWN DELAYS -----* | |
|--|------|
| BREAKDOWN DURATION (MINS) | 0 |
| RANGE OF QUEUE DELAY - MIN (VEH-H) MAX | 0.0 |
| AV BREAKDOWNS PER DAY | 0.00 |
| AV QUEUE DELAY/DAY (VEH-H) | 0.0 |
| AV TOTAL DELAY/DAY (VEH-H) | 0.0 |

| *----- SITE ACCIDENT DELAYS -----* | |
|--|---|
| BREAKDOWN DURATION (MINS) | 0 |
| RANGE OF QUEUE DELAY - MIN (VEH-H) MAX | 0 |
| AV BREAKDOWNS PER DAY | 0 |
| AV QUEUE DELAY/DAY (VEH-H) | 0 |
| AV TOTAL DELAY/DAY (VEH-H) | 0 |

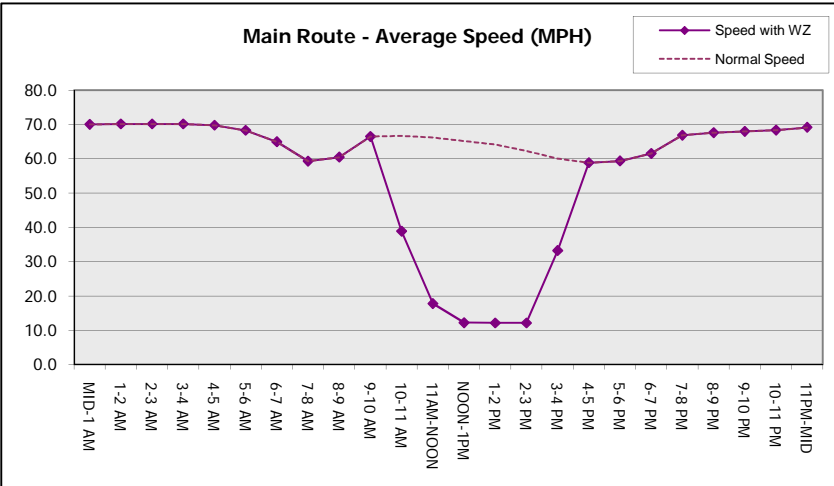
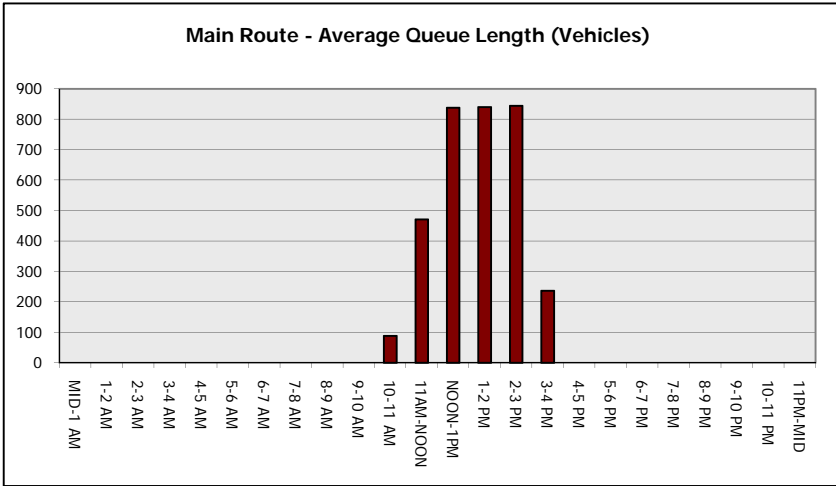
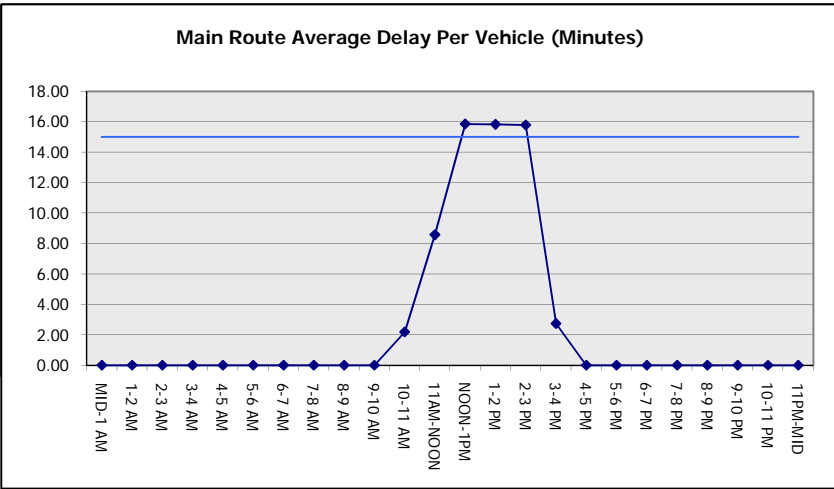
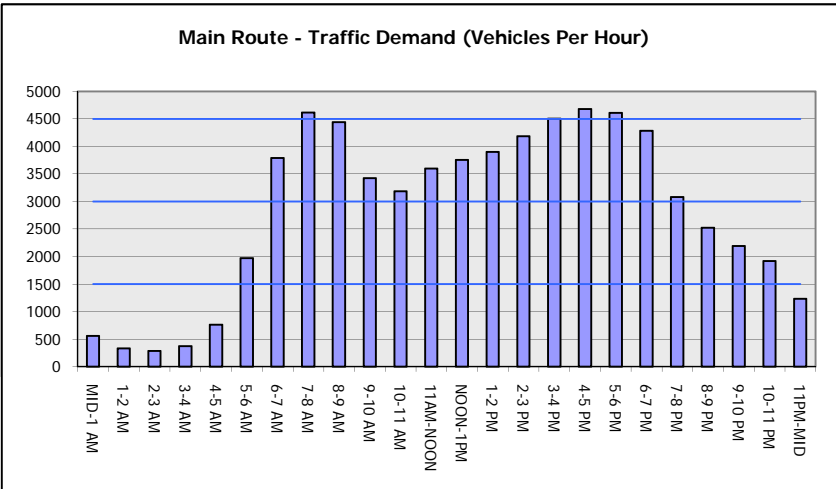
| AVERAGE ACCIDENT NUMBERS (PIA/DAY) | |
|------------------------------------|----------|
| MAIN ROUTE WITHOUT WORKS | 0.0369 |
| MAIN ROUTE WITH WORKS | 0.0343 |
| 'DIVERSION' | 0.0035 |
| PIA: Personal Injury Accidents | |
| IMPACTS ON ROAD USERS | |
| ROAD USER COSTS PER DAY | \$49,271 |
| CONGESTED HOURS PER DAY* | 3 |

*Delays Exceeding User-Specified Maximum

**IH 94: USH 18 TO CTH O (WAUKESHA COUNTY)
OFF-PEAK DAY CLOSURE
NO DIVERSION ROUTE (MAX QUEUE METHOD)**

AUGUST
Analyzed for 2009
Construction Season

GRAPHICAL REPRESENTATION OF TRAFFIC MODEL INPUT AND OUTPUT
MON-THUR WESTBOUND DIRECTION



| | |
|--|--|
| IH 94: USH 18 TO CTH O (WAUKESHA COUNTY) OFF-PEAK DAY CLOSURE NO DIVERSION ROUTE (MAX QUEUE METHOD) | AUGUST |
| | Analyzed for 2009 Construction Season |

SUMMARY OF TRAFFIC MODEL OUTPUT

MON-THUR EASTBOUND DIRECTION

| TIME OF DAY | FLOWS AND CAPACITY IN VEH/HR | | | | | | AVERAGE SPEEDS IN MPH | | | |
|-------------|------------------------------|-----------|----------------|------------|-------------|-----------------------|-----------------------|-------------------|----------------|------|
| | MAIN ROUTE | | SITE CAPA CITY | FLOW | | AV.DEL PER VEH (MINS) | AVERAGE QUEUE (VEH) | MAIN ROUTE | | SITE |
| | DEMAND FLOW | PCT HEAVY | | MAIN ROUTE | 'DIVER TED' | | | WITHOUT WORK ZONE | WITH WORK ZONE | |
| MID-1 AM | 508 | 0.0 | OFF | 508 | 0 | 0.00 | 0 | 70.1 | 70.1 | 70.1 |
| 1-2 AM | 319 | 0.0 | OFF | 319 | 0 | 0.00 | 0 | 70.2 | 70.2 | 70.2 |
| 2-3 AM | 274 | 0.0 | OFF | 274 | 0 | 0.00 | 0 | 70.2 | 70.2 | 70.2 |
| 3-4 AM | 329 | 0.0 | OFF | 329 | 0 | 0.00 | 0 | 70.2 | 70.2 | 70.2 |
| 4-5 AM | 646 | 0.0 | OFF | 646 | 0 | 0.00 | 0 | 69.9 | 69.9 | 69.9 |
| 5-6 AM | 1966 | 0.0 | OFF | 1966 | 0 | 0.00 | 0 | 68.3 | 68.3 | 68.3 |
| 6-7 AM | 4424 | 0.0 | OFF | 4424 | 0 | 0.00 | 0 | 60.6 | 60.6 | 60.6 |
| 7-8 AM | 4966 | 0.0 | OFF | 4966 | 0 | 0.00 | 0 | 56.9 | 56.9 | 56.9 |
| 8-9 AM | 4814 | 0.0 | OFF | 4814 | 0 | 0.00 | 0 | 57.9 | 57.9 | 57.9 |
| 9-10 AM | 3922 | 0.0 | OFF | 3922 | 0 | 0.00 | 0 | 64.1 | 64.1 | 64.1 |
| 10-11 AM | 3551 | 0.0 | 2999 | 3551 | 0 | 4.99 | 276 | 66.3 | 25.3 | 37.3 |
| 11AM-NOON | 3896 | 0.0 | 3000 | 3361 | 535 | 15.12+ | 806 | 64.2 | 12.4 | 37.3 |
| NOON-1PM | 3940 | 0.0 | 2999 | 2959 | 981 | 15.87+ | 843 | 64.0 | 12.1 | 37.3 |
| 1-2 PM | 4033 | 0.0 | 2999 | 2981 | 1052 | 15.80+ | 841 | 63.3 | 12.1 | 37.3 |
| 2-3 PM | 4352 | 0.0 | 2999 | 3001 | 1351 | 15.83+ | 851 | 61.1 | 12.0 | 37.3 |
| 3-4 PM | 4553 | 0.0 | OFF | 4553 | 0 | 2.88 | 251 | 59.7 | 32.4 | 32.4 |
| 4-5 PM | 4707 | 0.0 | OFF | 4707 | 0 | 0.00 | 0 | 58.7 | 58.7 | 58.7 |
| 5-6 PM | 4429 | 0.0 | OFF | 4429 | 0 | 0.00 | 0 | 60.6 | 60.6 | 60.6 |
| 6-7 PM | 3695 | 0.0 | OFF | 3695 | 0 | 0.00 | 0 | 65.6 | 65.6 | 65.6 |
| 7-8 PM | 2783 | 0.0 | OFF | 2783 | 0 | 0.00 | 0 | 67.3 | 67.3 | 67.3 |
| 8-9 PM | 2596 | 0.0 | OFF | 2596 | 0 | 0.00 | 0 | 67.5 | 67.5 | 67.5 |
| 9-10 PM | 2242 | 0.0 | OFF | 2242 | 0 | 0.00 | 0 | 67.9 | 67.9 | 67.9 |
| 10-11 PM | 1582 | 0.0 | OFF | 1582 | 0 | 0.00 | 0 | 68.7 | 68.7 | 68.7 |
| 11PM-MID | 1086 | 0.0 | OFF | 1086 | 0 | 0.00 | 0 | 69.4 | 69.4 | 69.4 |

"OFF" INDICATES NO ROAD WORK (ALL LANES OPEN TO TRAFFIC)

+ INDICATES QUEUEING EXCEEDS USER-SPECIFIED MAXIMUM LIMIT

| | |
|--|------|
| BREAKDOWN DURATION (MINS) | 0 |
| RANGE OF QUEUE DELAY - MIN (VEH-H) MAX | 0.0 |
| AV BREAKDOWNS PER DAY | 0.00 |
| AV QUEUE DELAY/DAY (VEH-H) | 0.0 |
| AV TOTAL DELAY/DAY (VEH-H) | 0.0 |

| | |
|--|---|
| BREAKDOWN DURATION (MINS) | 0 |
| RANGE OF QUEUE DELAY - MIN (VEH-H) MAX | 0 |
| AV BREAKDOWNS PER DAY | 0 |
| AV QUEUE DELAY/DAY (VEH-H) | 0 |
| AV TOTAL DELAY/DAY (VEH-H) | 0 |

| | |
|--------------------------|--------|
| MAIN ROUTE WITHOUT WORKS | 0.0377 |
| MAIN ROUTE WITH WORKS | 0.0345 |
| 'DIVERSION' | 0.0049 |

PIA: Personal Injury Accidents

| | |
|--------------------------|----------|
| ROAD USER COSTS PER DAY | \$59,092 |
| CONGESTED HOURS PER DAY* | 4 |

*Delays Exceeding User-Specified Maximum

**IH 94: USH 18 TO CTH O (WAUKESHA COUNTY)
OFF-PEAK DAY CLOSURE
NO DIVERSION ROUTE (MAX QUEUE METHOD)**

AUGUST

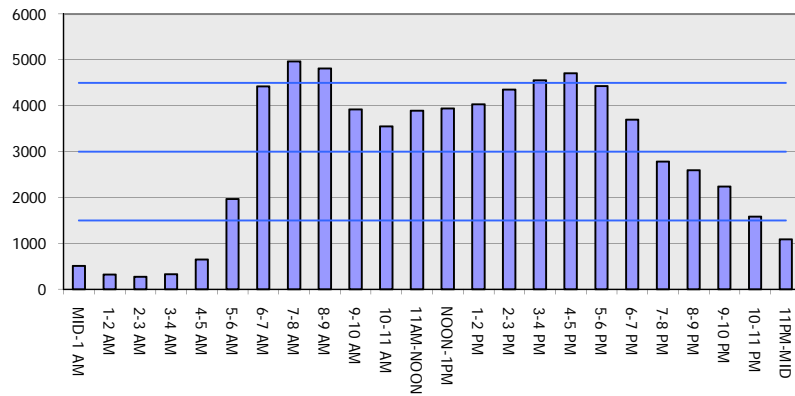
Analyzed for 2009
Construction Season

GRAPHICAL REPRESENTATION OF TRAFFIC MODEL INPUT AND OUTPUT

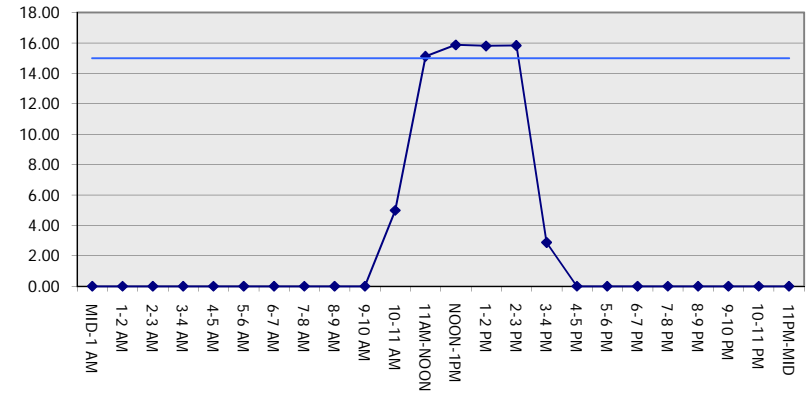
MON-THUR

EASTBOUND DIRECTION

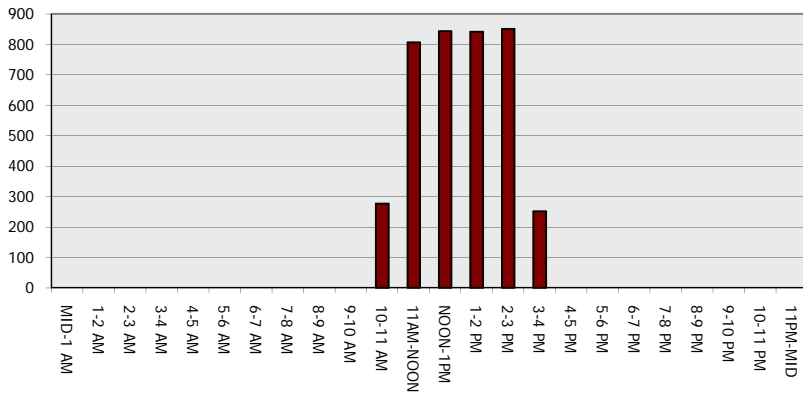
Main Route - Traffic Demand (Vehicles Per Hour)



Main Route Average Delay Per Vehicle (Minutes)



Main Route - Average Queue Length (Vehicles)



Main Route - Average Speed (MPH)

