

<b>IH 94: USH 18 TO CTH O (WAUKESHA COUNTY)</b> <b>OFF-PEAK DAY CLOSURE</b> <b>NO DIVERSION ROUTE (MAX QUEUE METHOD)</b>	<b>AUGUST</b>
	Analyzed for 2009 Construction Season

**SUMMARY OF TRAFFIC MODEL OUTPUT**

FRIDAY WESTBOUND DIRECTION

TIME OF DAY	FLOWS AND CAPACITY IN VEH/HR						AVERAGE SPEEDS IN MPH			
	MAIN ROUTE		SITE CAPA CITY	FLOW		AV.DEL PER VEH (MINS)	AVERAGE QUEUE (VEH)	MAIN ROUTE		SITE
	DEMAND FLOW	PCT HEAVY		MAIN ROUTE	'DIVER TED'			WITHOUT WORK ZONE	WITH WORK ZONE	
MID-1 AM	139	0.0	OFF	139	0	0.00	0	70.2	70.2	70.2
1-2 AM	24	0.0	OFF	24	0	0.00	0	70.2	70.2	70.2
2-3 AM	151	0.0	OFF	151	0	0.00	0	70.2	70.2	70.2
3-4 AM	23	0.0	OFF	23	0	0.00	0	70.2	70.2	70.2
4-5 AM	70	0.0	OFF	70	0	0.00	0	70.2	70.2	70.2
5-6 AM	138	0.0	OFF	138	0	0.00	0	70.2	70.2	70.2
6-7 AM	199	0.0	OFF	199	0	0.00	0	70.2	70.2	70.2
7-8 AM	141	0.0	OFF	141	0	0.00	0	70.2	70.2	70.2
8-9 AM	3023	0.0	OFF	3023	0	0.00	0	67.0	67.0	67.0
9-10 AM	2201	0.0	OFF	2201	0	0.00	0	68.0	68.0	68.0
10-11 AM	1418	0.0	3000	1418	0	0.34	0	69.0	61.8	49.7
11AM-NOON	2046	0.0	3000	2046	0	0.33	0	68.2	61.4	49.7
NOON-1PM	141	0.0	3000	141	0	0.36	0	70.2	62.5	49.7
1-2 PM	2630	0.0	2999	2630	0	0.85	23	67.4	52.7	43.5
2-3 PM	4624	0.0	3000	3701	923	10.89+	640	59.2	15.2	37.3
3-4 PM	5015	0.0	OFF	5015	0	3.60	321	56.6	28.3	28.3
4-5 PM	4861	0.0	OFF	4861	0	0.00	0	57.6	57.6	57.6
5-6 PM	5089	0.0	OFF	5089	0	0.00	0	56.1	56.1	56.1
6-7 PM	3850	0.0	OFF	3850	0	0.00	0	64.6	64.6	64.6
7-8 PM	3066	0.0	OFF	3066	0	0.00	0	66.9	66.9	66.9
8-9 PM	2801	0.0	OFF	2801	0	0.00	0	67.3	67.3	67.3
9-10 PM	2426	0.0	OFF	2426	0	0.00	0	67.7	67.7	67.7
10-11 PM	2147	0.0	OFF	2147	0	0.00	0	68.1	68.1	68.1
11PM-MID	1701	0.0	OFF	1701	0	0.00	0	68.6	68.6	68.6

"OFF" INDICATES NO ROAD WORK (ALL LANES OPEN TO TRAFFIC)

+ INDICATES QUEUEING EXCEEDS USER-SPECIFIED MAXIMUM LIMIT

*----- SITE BREAKDOWN DELAYS -----*	
BREAKDOWN DURATION (MINS)	0
RANGE OF QUEUE DELAY - MIN (VEH-H) MAX	0.0
AV BREAKDOWNS PER DAY	0.00
AV QUEUE DELAY/DAY (VEH-H)	0.0
AV TOTAL DELAY/DAY (VEH-H)	0.0

*----- SITE ACCIDENT DELAYS -----*	
BREAKDOWN DURATION (MINS)	0
RANGE OF QUEUE DELAY - MIN (VEH-H) MAX	0
AV BREAKDOWNS PER DAY	0
AV QUEUE DELAY/DAY (VEH-H)	0
AV TOTAL DELAY/DAY (VEH-H)	0

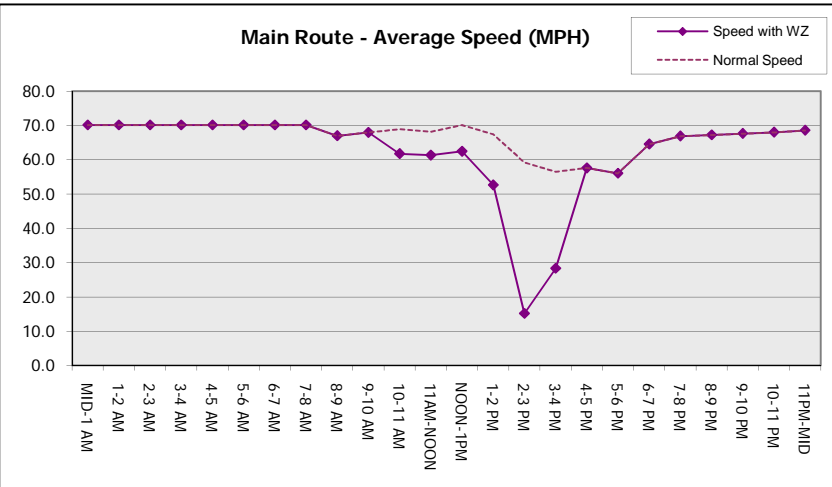
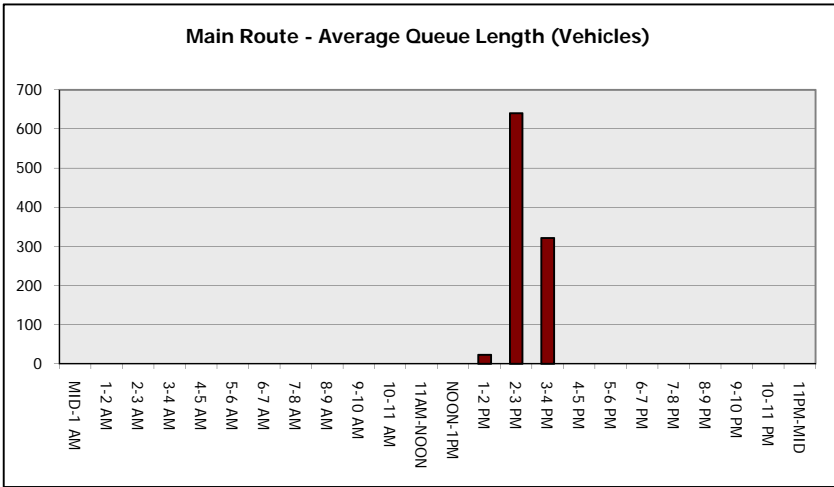
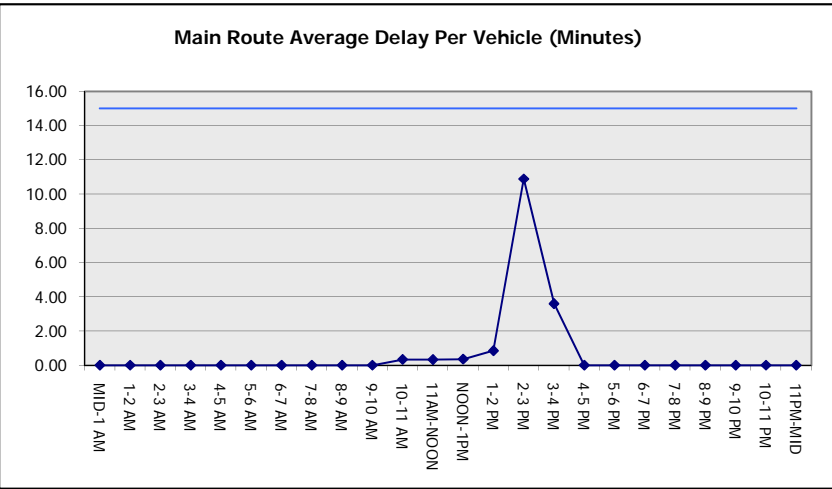
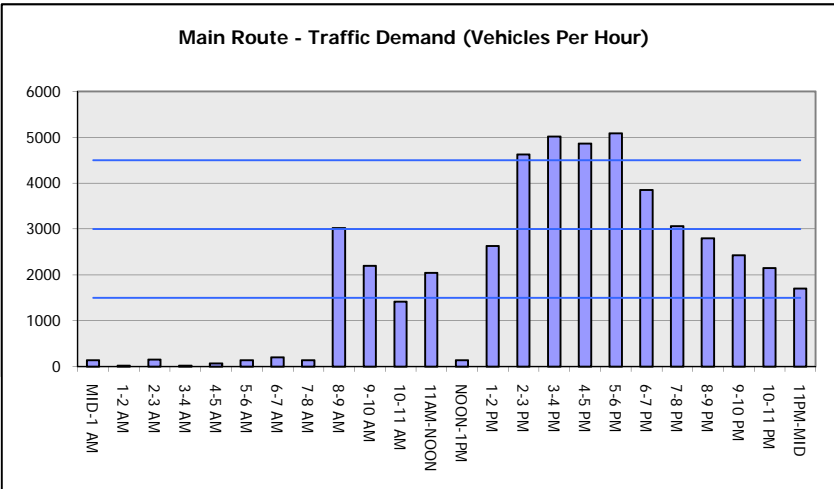
AVERAGE ACCIDENT NUMBERS (PIA/DAY)	
MAIN ROUTE WITHOUT WORKS	0.0259
MAIN ROUTE WITH WORKS	0.0248
'DIVERSION'	0.0012
PIA: Personal Injury Accidents	
IMPACTS ON ROAD USERS	
ROAD USER COSTS PER DAY	\$10,479
CONGESTED HOURS PER DAY*	1

\*Delays Exceeding User-Specified Maximum

**IH 94: USH 18 TO CTH O (WAUKESHA COUNTY)**  
**OFF-PEAK DAY CLOSURE**  
**NO DIVERSION ROUTE (MAX QUEUE METHOD)**

**AUGUST**  
 Analyzed for 2009  
 Construction Season

**GRAPHICAL REPRESENTATION OF TRAFFIC MODEL INPUT AND OUTPUT**  
**FRIDAY WESTBOUND DIRECTION**



<b>IH 94: USH 18 TO CTH O (WAUKESHA COUNTY)</b> <b>OFF-PEAK DAY CLOSURE</b> <b>NO DIVERSION ROUTE (MAX QUEUE METHOD)</b>	<b>AUGUST</b>
	Analyzed for 2009 Construction Season

**SUMMARY OF TRAFFIC MODEL OUTPUT**

FRIDAY EASTBOUND DIRECTION

TIME OF DAY	FLOWS AND CAPACITY IN VEH/HR							AVERAGE SPEEDS IN MPH		
	MAIN ROUTE		SITE CAPA CITY	FLOW		AV.DEL PER VEH (MINS)	AVERAGE QUEUE (VEH)	MAIN ROUTE		SITE
	DEMAND FLOW	PCT HEAVY		MAIN ROUTE	'DIVER TED'			WITHOUT WORK ZONE	WITH WORK ZONE	
MID-1 AM	83	0.0	OFF	83	0	0.00	0	70.2	70.2	70.2
1-2 AM	24	0.0	OFF	24	0	0.00	0	70.2	70.2	70.2
2-3 AM	95	0.0	OFF	95	0	0.00	0	70.2	70.2	70.2
3-4 AM	14	0.0	OFF	14	0	0.00	0	70.2	70.2	70.2
4-5 AM	70	0.0	OFF	70	0	0.00	0	70.2	70.2	70.2
5-6 AM	91	0.0	OFF	91	0	0.00	0	70.2	70.2	70.2
6-7 AM	229	0.0	OFF	229	0	0.00	0	70.2	70.2	70.2
7-8 AM	122	0.0	OFF	122	0	0.00	0	70.2	70.2	70.2
8-9 AM	2960	0.0	OFF	2960	0	0.00	0	67.1	67.1	67.1
9-10 AM	2185	0.0	OFF	2185	0	0.00	0	68.0	68.0	68.0
10-11 AM	1369	0.0	3000	1369	0	0.34	0	69.1	61.8	49.7
11AM-NOON	2009	0.0	3000	2009	0	0.33	0	68.2	61.4	49.7
NOON-1PM	109	0.0	3000	109	0	0.36	0	70.2	62.5	49.7
1-2 PM	2181	0.0	2999	2181	0	0.45	0	68.0	59.1	45.5
2-3 PM	4737	0.0	2999	3736	1001	9.87+	597	58.5	16.2	37.3
3-4 PM	5125	0.0	OFF	5125	0	3.46	309	55.8	28.7	28.7
4-5 PM	4914	0.0	OFF	4914	0	0.00	0	57.3	57.3	57.3
5-6 PM	4785	0.0	OFF	4785	0	0.00	0	58.2	58.2	58.2
6-7 PM	3850	0.0	OFF	3850	0	0.00	0	64.6	64.6	64.6
7-8 PM	3177	0.0	OFF	3177	0	0.00	0	66.8	66.8	66.8
8-9 PM	2720	0.0	OFF	2720	0	0.00	0	67.4	67.4	67.4
9-10 PM	2494	0.0	OFF	2494	0	0.00	0	67.6	67.6	67.6
10-11 PM	2003	0.0	OFF	2003	0	0.00	0	68.2	68.2	68.2
11PM-MID	1514	0.0	OFF	1514	0	0.00	0	68.9	68.9	68.9

"OFF" INDICATES NO ROAD WORK (ALL LANES OPEN TO TRAFFIC)

+ INDICATES QUEUEING EXCEEDS USER-SPECIFIED MAXIMUM LIMIT

*----- SITE BREAKDOWN DELAYS -----*	
BREAKDOWN DURATION (MINS)	0
RANGE OF QUEUE DELAY - MIN (VEH-H) MAX	0.0
AV BREAKDOWNS PER DAY	0.00
AV QUEUE DELAY/DAY (VEH-H)	0.0
AV TOTAL DELAY/DAY (VEH-H)	0.0

*----- SITE ACCIDENT DELAYS -----*	
BREAKDOWN DURATION (MINS)	0
RANGE OF QUEUE DELAY - MIN (VEH-H) MAX	0
AV BREAKDOWNS PER DAY	0
AV QUEUE DELAY/DAY (VEH-H)	0
AV TOTAL DELAY/DAY (VEH-H)	0

AVERAGE ACCIDENT NUMBERS (PIA/DAY)	
MAIN ROUTE WITHOUT WORKS	0.0253
MAIN ROUTE WITH WORKS	0.0242
'DIVERSION'	0.0013

PIA: Personal Injury Accidents

ECONOMIC IMPACT ON ROAD USERS	
ROAD USER COSTS PER DAY	\$9,718
CONGESTED HOURS PER DAY*	1

\*Delays Exceeding User-Specified Maximum

**IH 94: USH 18 TO CTH O (WAUKESHA COUNTY)  
OFF-PEAK DAY CLOSURE  
NO DIVERSION ROUTE (MAX QUEUE METHOD)**

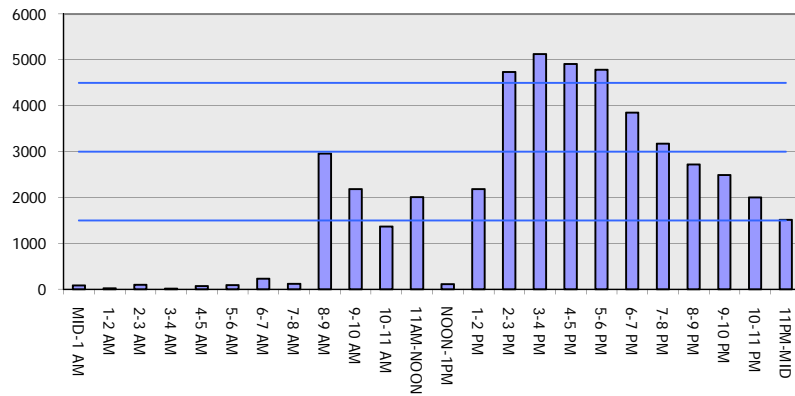
**AUGUST**

Analyzed for 2009  
Construction Season

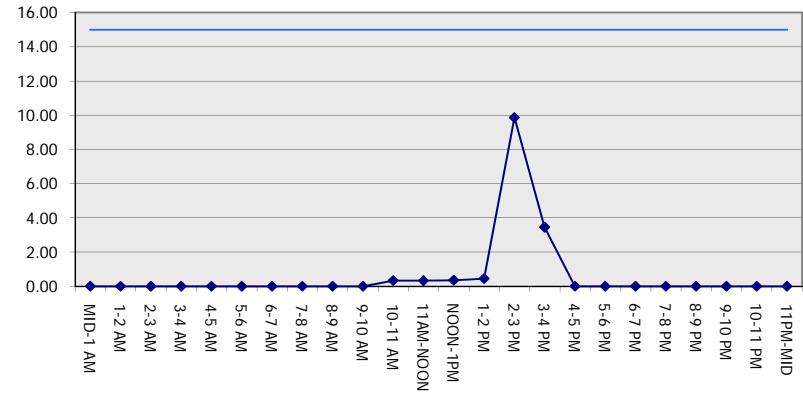
**GRAPHICAL REPRESENTATION OF TRAFFIC MODEL INPUT AND OUTPUT**

**FRIDAY EASTBOUND DIRECTION**

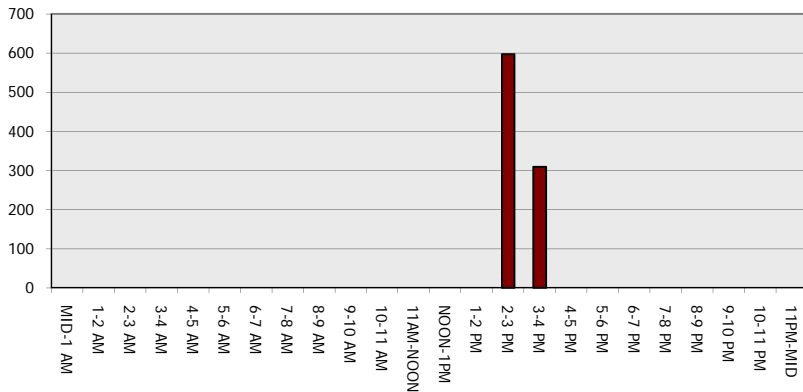
**Main Route - Traffic Demand (Vehicles Per Hour)**



**Main Route Average Delay Per Vehicle (Minutes)**



**Main Route - Average Queue Length (Vehicles)**



**Main Route - Average Speed (MPH)**

