

<b>IH 94: STH 16 TO USH 18 (WAUKESHA COUNTY)</b> <b>OFF-PEAK DAY CLOSURE</b> <b>NO DIVERSION ROUTE (MAX QUEUE METHOD)</b>	<b>OCTOBER</b>
	Analyzed for 2009 Construction Season

**SUMMARY OF TRAFFIC MODEL OUTPUT**

SUNDAY WESTBOUND DIRECTION

TIME OF DAY	FLOWS AND CAPACITY IN VEH/HR						AVERAGE SPEEDS IN MPH				
	MAIN ROUTE		SITE CAPA CITY	FLOW		AV.DEL PER VEH (MINS)	AVERAGE QUEUE (VEH)	MAIN ROUTE		SITE	
	DEMAND FLOW	PCT HEAVY		MAIN ROUTE	'DIVER TED'			WITHOUT WORK ZONE	WITH WORK ZONE		
MID-1 AM	757	0.0	OFF	757	0	0.00	0	69.8	69.8	69.8	
1-2 AM	432	0.0	OFF	432	0	0.00	0	70.2	70.2	70.2	
2-3 AM	372	0.0	OFF	372	0	0.00	0	70.2	70.2	70.2	
3-4 AM	240	0.0	OFF	240	0	0.00	0	70.2	70.2	70.2	
4-5 AM	210	0.0	OFF	210	0	0.00	0	70.2	70.2	70.2	
5-6 AM	361	0.0	OFF	361	0	0.00	0	70.2	70.2	70.2	
6-7 AM	598	0.0	OFF	598	0	0.00	0	70.0	70.0	70.0	
7-8 AM	967	0.0	OFF	967	0	0.00	0	69.6	69.6	69.6	
8-9 AM	1396	0.0	OFF	1396	0	0.00	0	69.0	69.0	69.0	
9-10 AM	2047	0.0	3000	2047	0	0.33	0	68.2	62.5	49.7	
10-11 AM	2633	0.0	2999	2633	0	0.49	0	67.4	59.7	44.0	
11AM-NOON	3107	0.0	2999	3107	0	1.16	26	66.9	51.1	37.3	
NOON-1PM	3492	0.0	3000	3492	0	6.48	347	66.4	24.5	37.3	
1-2 PM	3286	0.0	2999	3190	95	14.02+	738	66.6	14.2	37.3	
2-3 PM	3224	0.0	3000	3001	223	15.33+	805	66.8	13.4	37.3	
3-4 PM	3398	0.0	3000	3001	397	15.32+	805	66.5	13.4	37.3	
4-5 PM	3177	0.0	3000	3002	174	15.33+	805	66.8	13.4	37.3	
5-6 PM	2833	0.0	3000	2833	0	13.98+	731	67.2	14.2	37.3	
6-7 PM	2436	0.0	2999	2436	0	6.54	370	67.7	24.5	40.3	
7-8 PM	1952	0.0	OFF	1952	0	0.01	0	68.3	68.1	68.1	
8-9 PM	1364	0.0	OFF	1364	0	0.00	0	69.1	69.1	69.1	
9-10 PM	1058	0.0	OFF	1058	0	0.00	0	69.4	69.4	69.4	
10-11 PM	854	0.0	OFF	854	0	0.00	0	69.7	69.7	69.7	
11PM-MID	552	0.0	OFF	552	0	0.00	0	70.0	70.0	70.0	

"OFF" INDICATES NO ROAD WORK (ALL LANES OPEN TO TRAFFIC)

+ INDICATES QUEUEING EXCEEDS USER-SPECIFIED MAXIMUM LIMIT

*----- SITE BREAKDOWN DELAYS -----*	
BREAKDOWN DURATION (MINS)	0
RANGE OF QUEUE DELAY - MIN (VEH-H) MAX	0.0
AV BREAKDOWNS PER DAY	0.00
AV QUEUE DELAY/DAY (VEH-H)	0.0
AV TOTAL DELAY/DAY (VEH-H)	0.0

*----- SITE ACCIDENT DELAYS -----*	
BREAKDOWN DURATION (MINS)	0
RANGE OF QUEUE DELAY - MIN (VEH-H) MAX	0
AV BREAKDOWNS PER DAY	0
AV QUEUE DELAY/DAY (VEH-H)	0
AV TOTAL DELAY/DAY (VEH-H)	0

AVERAGE ACCIDENT NUMBERS (PIA/DAY)	
MAIN ROUTE WITHOUT WORKS	0.0272
MAIN ROUTE WITH WORKS	0.0247
'DIVERSION'	0.0014
PIA: Personal Injury Accidents	
IMPACTS ON ROAD USERS	
ROAD USER COSTS PER DAY	\$77,687
CONGESTED HOURS PER DAY*	5

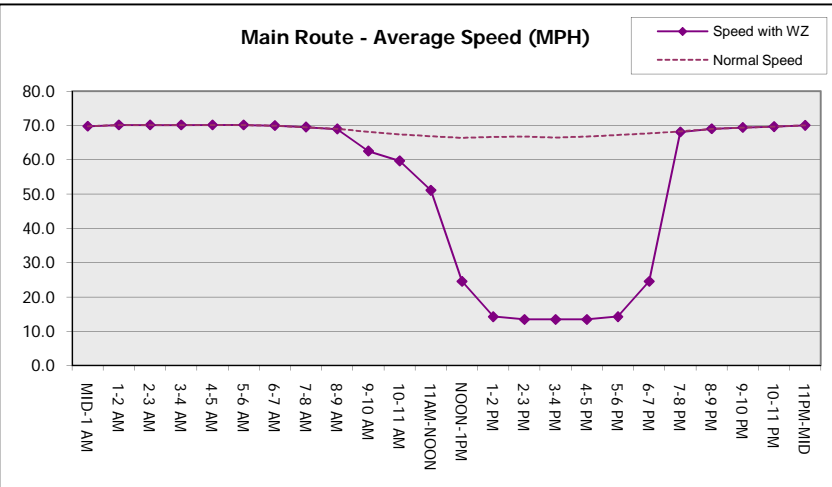
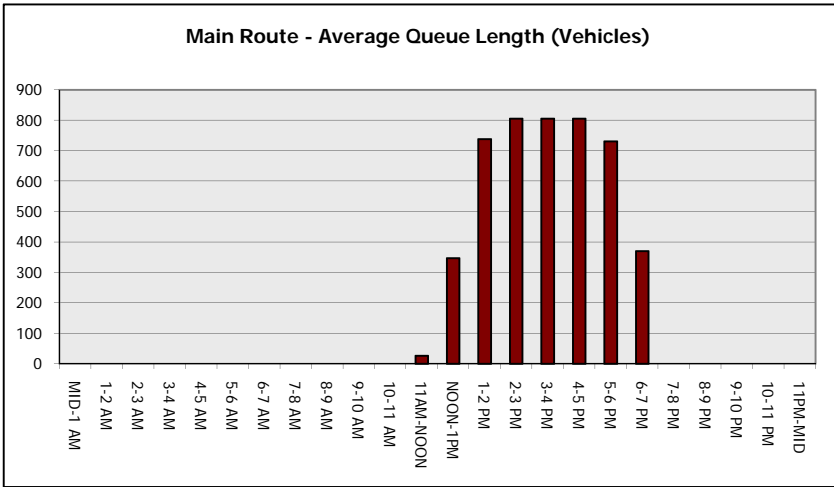
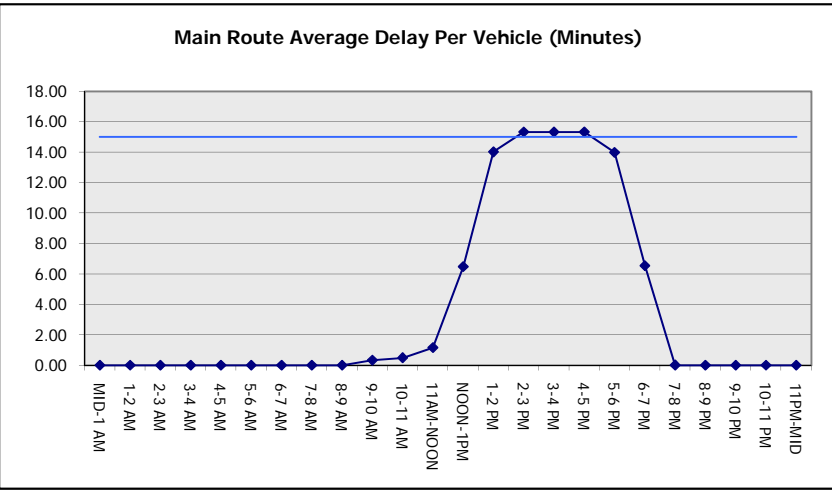
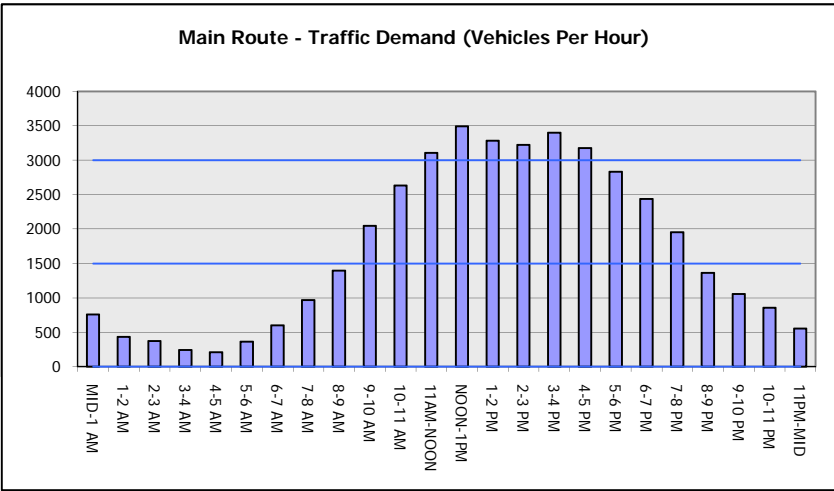
\*Delays Exceeding User-Specified Maximum

**IH 94: STH 16 TO USH 18 (WAUKESHA COUNTY)  
OFF-PEAK DAY CLOSURE  
NO DIVERSION ROUTE (MAX QUEUE METHOD)**

**OCTOBER**  
Analyzed for 2009  
Construction Season

**GRAPHICAL REPRESENTATION OF TRAFFIC MODEL INPUT AND OUTPUT**

**SUNDAY WESTBOUND DIRECTION**



<b>IH 94: STH 16 TO USH 18 (WAUKESHA COUNTY)</b> <b>OFF-PEAK DAY CLOSURE</b> <b>NO DIVERSION ROUTE (MAX QUEUE METHOD)</b>	<b>OCTOBER</b>
	Analyzed for 2009 Construction Season

**SUMMARY OF TRAFFIC MODEL OUTPUT**

SUNDAY EASTBOUND DIRECTION

TIME OF DAY	FLOWS AND CAPACITY IN VEH/HR						AVERAGE SPEEDS IN MPH			
	MAIN ROUTE		SITE CAPA CITY	FLOW		AV.DEL PER VEH (MINS)	AVERAGE QUEUE (VEH)	MAIN ROUTE		SITE
	DEMAND FLOW	PCT HEAVY		MAIN ROUTE	'DIVER TED'			WITHOUT WORK ZONE	WITH WORK ZONE	
MID-1 AM	709	0.0	OFF	709	0	0.00	0	69.9	69.9	69.9
1-2 AM	397	0.0	OFF	397	0	0.00	0	70.2	70.2	70.2
2-3 AM	286	0.0	OFF	286	0	0.00	0	70.2	70.2	70.2
3-4 AM	229	0.0	OFF	229	0	0.00	0	70.2	70.2	70.2
4-5 AM	257	0.0	OFF	257	0	0.00	0	70.2	70.2	70.2
5-6 AM	411	0.0	OFF	411	0	0.00	0	70.2	70.2	70.2
6-7 AM	657	0.0	OFF	657	0	0.00	0	69.9	69.9	69.9
7-8 AM	983	0.0	OFF	983	0	0.00	0	69.5	69.5	69.5
8-9 AM	1437	0.0	OFF	1437	0	0.00	0	68.9	68.9	68.9
9-10 AM	2234	0.0	2999	2234	0	0.34	0	67.9	62.2	49.2
10-11 AM	2973	0.0	2999	2973	0	0.95	17	67.1	53.5	38.9
11AM-NOON	3590	0.0	3000	3590	0	6.13	340	66.3	25.4	37.3
NOON-1PM	3815	0.0	2999	3115	700	14.98+	793	64.8	13.5	37.3
1-2 PM	3810	0.0	3000	3001	809	15.22+	805	64.8	13.4	37.3
2-3 PM	3799	0.0	3000	3001	798	15.23+	805	64.9	13.4	37.3
3-4 PM	3917	0.0	3000	3002	915	15.18+	805	64.1	13.4	37.3
4-5 PM	3848	0.0	3000	3001	847	15.21+	805	64.6	13.4	37.3
5-6 PM	3551	0.0	3000	3001	551	15.31+	805	66.3	13.4	37.3
6-7 PM	3206	0.0	3000	3028	178	15.25+	801	66.8	13.4	37.3
7-8 PM	2347	0.0	OFF	2347	0	0.96	89	67.8	54.0	54.0
8-9 PM	1797	0.0	OFF	1797	0	0.00	0	68.5	68.5	68.5
9-10 PM	1295	0.0	OFF	1295	0	0.00	0	69.1	69.1	69.1
10-11 PM	879	0.0	OFF	879	0	0.00	0	69.6	69.6	69.6
11PM-MID	491	0.0	OFF	491	0	0.00	0	70.1	70.1	70.1

"OFF" INDICATES NO ROAD WORK (ALL LANES OPEN TO TRAFFIC)

+ INDICATES QUEUEING EXCEEDS USER-SPECIFIED MAXIMUM LIMIT

BREAKDOWN DURATION (MINS)	0
RANGE OF QUEUE DELAY - MIN (VEH-H) MAX	0.0
AV BREAKDOWNS PER DAY	0.00
AV QUEUE DELAY/DAY (VEH-H)	0.0
AV TOTAL DELAY/DAY (VEH-H)	0.0

BREAKDOWN DURATION (MINS)	0
RANGE OF QUEUE DELAY - MIN (VEH-H) MAX	0
AV BREAKDOWNS PER DAY	0
AV QUEUE DELAY/DAY (VEH-H)	0
AV TOTAL DELAY/DAY (VEH-H)	0

MAIN ROUTE WITHOUT WORKS	0.0314
MAIN ROUTE WITH WORKS	0.0262
'DIVERSION'	0.0074

PIA: Personal Injury Accidents

ROAD USER COSTS PER DAY	\$117,105
CONGESTED HOURS PER DAY*	7

\*Delays Exceeding User-Specified Maximum

**IH 94: STH 16 TO USH 18 (WAUKESHA COUNTY)  
OFF-PEAK DAY CLOSURE  
NO DIVERSION ROUTE (MAX QUEUE METHOD)**

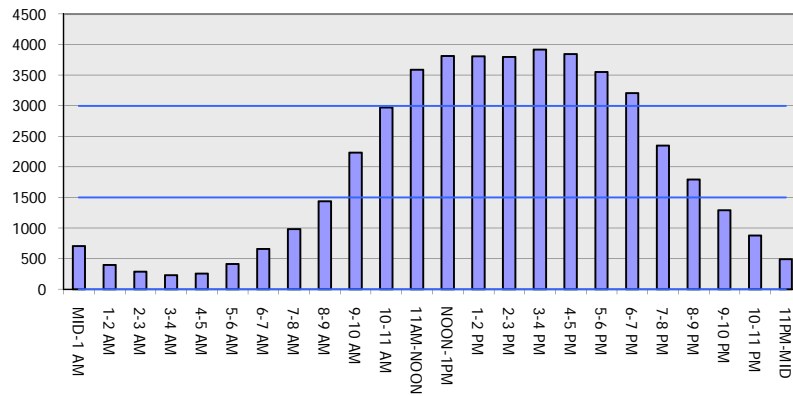
**OCTOBER**

Analyzed for 2009  
Construction Season

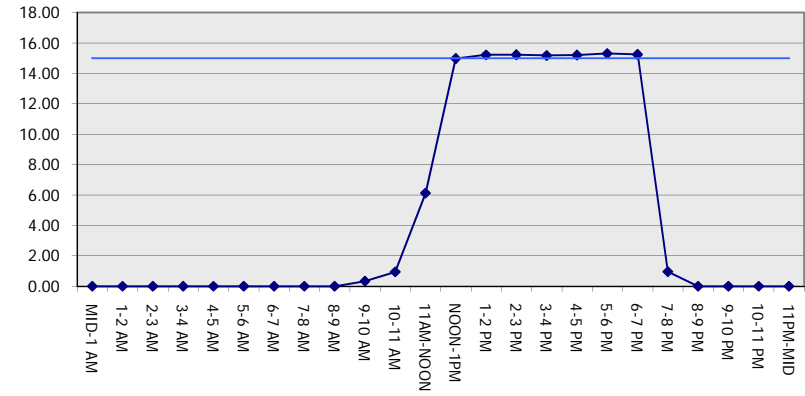
**GRAPHICAL REPRESENTATION OF TRAFFIC MODEL INPUT AND OUTPUT**

**SUNDAY EASTBOUND DIRECTION**

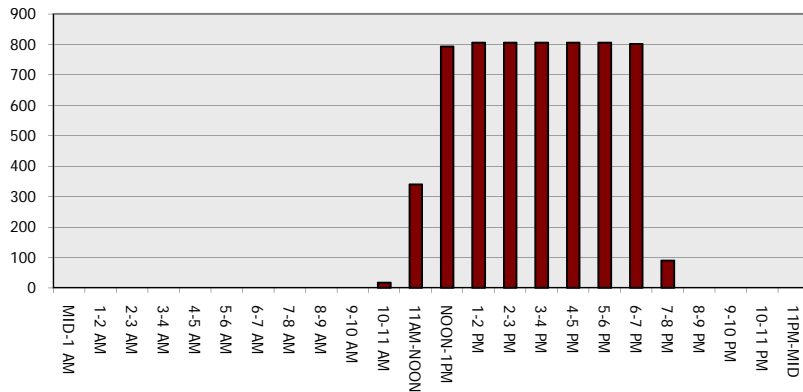
**Main Route - Traffic Demand (Vehicles Per Hour)**



**Main Route Average Delay Per Vehicle (Minutes)**



**Main Route - Average Queue Length (Vehicles)**



**Main Route - Average Speed (MPH)**

