

IH 94: STH 16 TO USH 18 (WAUKESHA COUNTY) OFF-PEAK DAY 2 LANE CLOSURE NO DIVERSION ROUTE (MAX QUEUE METHOD)	OCTOBER
	Analyzed for 2009 Construction Season

SUMMARY OF TRAFFIC MODEL OUTPUT

MON-THUR WESTBOUND DIRECTION

TIME OF DAY	FLOWS AND CAPACITY IN VEH/HR						AVERAGE SPEEDS IN MPH			
	MAIN ROUTE		SITE CAPA CITY	FLOW		AV.DEL PER VEH (MINS)	AVERAGE QUEUE (VEH)	MAIN ROUTE		SITE
	DEMAND FLOW	PCT HEAVY		MAIN ROUTE	'DIVER TED'			WITHOUT WORK ZONE	WITH WORK ZONE	
MID-1 AM	373	0.0	OFF	373	0	0.00	0	70.2	70.2	70.2
1-2 AM	241	0.0	OFF	241	0	0.00	0	70.2	70.2	70.2
2-3 AM	205	0.0	OFF	205	0	0.00	0	70.2	70.2	70.2
3-4 AM	265	0.0	OFF	265	0	0.00	0	70.2	70.2	70.2
4-5 AM	509	0.0	OFF	509	0	0.00	0	70.1	70.1	70.1
5-6 AM	1402	0.0	OFF	1402	0	0.00	0	69.0	69.0	69.0
6-7 AM	3041	0.0	OFF	3041	0	0.00	0	66.9	66.9	66.9
7-8 AM	4218	0.0	OFF	4218	0	0.00	0	62.0	62.0	62.0
8-9 AM	3640	0.0	OFF	3640	0	0.00	0	66.0	66.0	66.0
9-10 AM	2789	0.0	OFF	2789	0	0.00	0	67.3	67.3	67.3
10-11 AM	2700	0.0	1499	1850	850	13.39+	333	67.4	14.7	34.6
11AM-NOON	3026	0.0	1499	1500	1526	16.27+	399	66.9	12.5	30.8
NOON-1PM	3294	0.0	1500	1500	1794	16.25+	400	66.6	12.5	30.8
1-2 PM	3411	0.0	1500	1500	1911	16.25+	400	66.5	12.5	30.8
2-3 PM	4108	0.0	1500	1500	2608	16.02+	400	62.8	12.5	30.8
3-4 PM	5144	0.0	OFF	5144	0	0.92	71	55.7	46.3	46.3
4-5 PM	5595	0.0	OFF	5595	0	0.00	0	52.7	52.7	52.7
5-6 PM	5491	0.0	OFF	5491	0	0.00	0	53.3	53.3	53.3
6-7 PM	3734	0.0	OFF	3734	0	0.00	0	65.3	65.3	65.3
7-8 PM	2547	0.0	OFF	2547	0	0.00	0	67.6	67.6	67.6
8-9 PM	2168	0.0	OFF	2168	0	0.00	0	68.1	68.1	68.1
9-10 PM	1727	0.0	OFF	1727	0	0.00	0	68.6	68.6	68.6
10-11 PM	1098	0.0	OFF	1098	0	0.00	0	69.4	69.4	69.4
11PM-MID	671	0.0	OFF	671	0	0.00	0	69.9	69.9	69.9

"OFF" INDICATES NO ROAD WORK (ALL LANES OPEN TO TRAFFIC)

+ INDICATES QUEUEING EXCEEDS USER-SPECIFIED MAXIMUM LIMIT

----- SITE BREAKDOWN DELAYS -----	
BREAKDOWN DURATION (MINS)	0
RANGE OF QUEUE DELAY - MIN (VEH-H) MAX	0.0
AV BREAKDOWNS PER DAY	0.00
AV QUEUE DELAY/DAY (VEH-H)	0.0
AV TOTAL DELAY/DAY (VEH-H)	0.0

----- SITE ACCIDENT DELAYS -----	
BREAKDOWN DURATION (MINS)	0
RANGE OF QUEUE DELAY - MIN (VEH-H) MAX	0
AV BREAKDOWNS PER DAY	0
AV QUEUE DELAY/DAY (VEH-H)	0
AV TOTAL DELAY/DAY (VEH-H)	0

AVERAGE ACCIDENT NUMBERS (PIA/DAY)	
MAIN ROUTE WITHOUT WORKS	0.0410
MAIN ROUTE WITH WORKS	0.0347
'DIVERSION'	0.0135
<small>PIA: Personal Injury Accidents</small>	
IMPACTS ON ROAD USERS	
ROAD USER COSTS PER DAY	\$57,157
CONGESTED HOURS PER DAY*	5

*Delays Exceeding User-Specified Maximum

IH 94: STH 16 TO USH 18 (WAUKESHA COUNTY)
OFF-PEAK DAY 2 LANE CLOSURE
NO DIVERSION ROUTE (MAX QUEUE METHOD)

OCTOBER

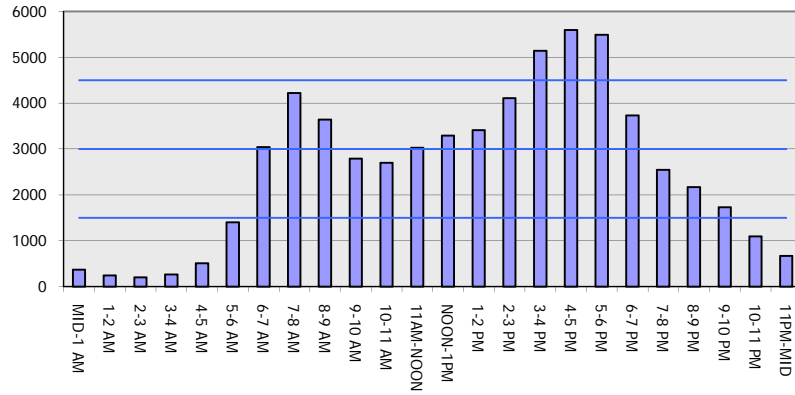
Analyzed for 2009
 Construction Season

GRAPHICAL REPRESENTATION OF TRAFFIC MODEL INPUT AND OUTPUT

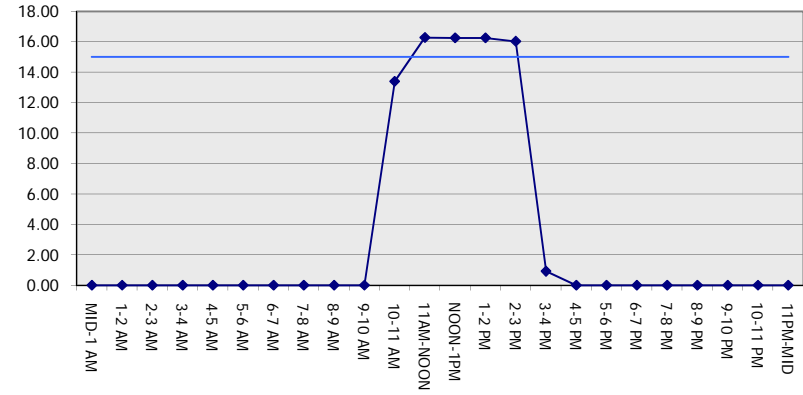
MON-THUR

WESTBOUND DIRECTION

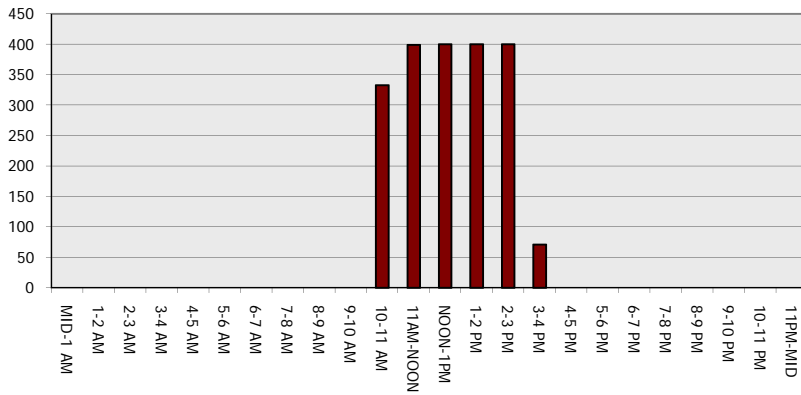
Main Route - Traffic Demand (Vehicles Per Hour)



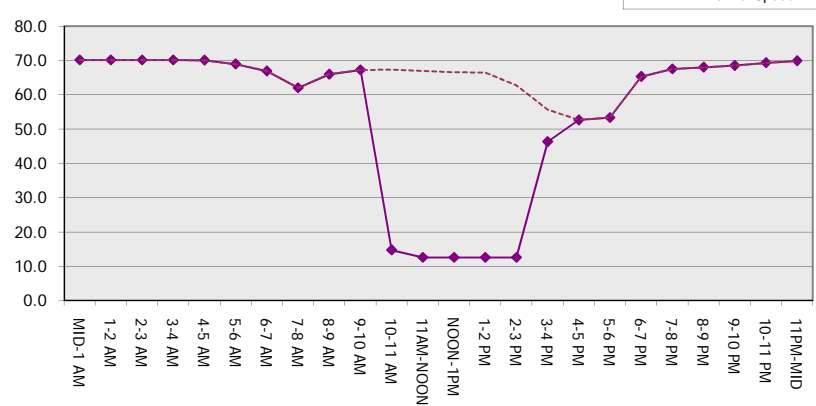
Main Route Average Delay Per Vehicle (Minutes)



Main Route - Average Queue Length (Vehicles)



Main Route - Average Speed (MPH)



IH 94: STH 16 TO USH 18 (WAUKESHA COUNTY) OFF-PEAK DAY 2 LANE CLOSURE NO DIVERSION ROUTE (MAX QUEUE METHOD)	OCTOBER
	Analyzed for 2009 Construction Season

SUMMARY OF TRAFFIC MODEL OUTPUT

MON-THUR EASTBOUND DIRECTION

TIME OF DAY	FLOWS AND CAPACITY IN VEH/HR							AVERAGE SPEEDS IN MPH		
	MAIN ROUTE		SITE CAPA CITY	FLOW		AV.DEL PER VEH (MINS)	AVERAGE QUEUE (VEH)	MAIN ROUTE		SITE
	DEMAND FLOW	PCT HEAVY		MAIN ROUTE	'DIVER TED'			WITHOUT WORK ZONE	WITH WORK ZONE	
MID-1 AM	275	0.0	OFF	275	0	0.00	0	70.2	70.2	70.2
1-2 AM	204	0.0	OFF	204	0	0.00	0	70.2	70.2	70.2
2-3 AM	200	0.0	OFF	200	0	0.00	0	70.2	70.2	70.2
3-4 AM	307	0.0	OFF	307	0	0.00	0	70.2	70.2	70.2
4-5 AM	776	0.0	OFF	776	0	0.00	0	69.7	69.7	69.7
5-6 AM	2612	0.0	OFF	2612	0	0.00	0	67.5	67.5	67.5
6-7 AM	5532	0.0	OFF	5532	0	0.00	0	53.0	53.0	53.0
7-8 AM	5533	0.0	OFF	5533	0	0.00	0	53.0	53.0	53.0
8-9 AM	4628	0.0	OFF	4628	0	0.00	0	59.2	59.2	59.2
9-10 AM	3400	0.0	OFF	3400	0	0.00	0	66.5	66.5	66.5
10-11 AM	3105	0.0	1499	1550	1555	16.47+	412	66.9	12.4	36.6
11AM-NOON	3250	0.0	1499	1626	1624	14.40+	379	66.7	13.8	36.0
NOON-1PM	3253	0.0	1499	1744	1509	15.58+	385	66.7	13.0	30.8
1-2 PM	3274	0.0	1500	1500	1774	16.26+	400	66.7	12.5	30.8
2-3 PM	3630	0.0	1500	1500	2130	16.22+	400	66.1	12.5	30.8
3-4 PM	4323	0.0	OFF	4323	0	0.73	52	61.3	52.1	52.1
4-5 PM	4609	0.0	OFF	4609	0	0.00	0	59.4	59.4	59.4
5-6 PM	4105	0.0	OFF	4105	0	0.00	0	62.8	62.8	62.8
6-7 PM	2916	0.0	OFF	2916	0	0.00	0	67.1	67.1	67.1
7-8 PM	1972	0.0	OFF	1972	0	0.00	0	68.3	68.3	68.3
8-9 PM	1710	0.0	OFF	1710	0	0.00	0	68.6	68.6	68.6
9-10 PM	1324	0.0	OFF	1324	0	0.00	0	69.1	69.1	69.1
10-11 PM	882	0.0	OFF	882	0	0.00	0	69.6	69.6	69.6
11PM-MID	518	0.0	OFF	518	0	0.00	0	70.1	70.1	70.1

"OFF" INDICATES NO ROAD WORK (ALL LANES OPEN TO TRAFFIC)

+ INDICATES QUEUEING EXCEEDS USER-SPECIFIED MAXIMUM LIMIT

----- SITE BREAKDOWN DELAYS -----	
BREAKDOWN DURATION (MINS)	0
RANGE OF QUEUE DELAY - MIN (VEH-H) MAX	0.0
AV BREAKDOWNS PER DAY	0.00
AV QUEUE DELAY/DAY (VEH-H)	0.0
AV TOTAL DELAY/DAY (VEH-H)	0.0

----- SITE ACCIDENT DELAYS -----	
BREAKDOWN DURATION (MINS)	0
RANGE OF QUEUE DELAY - MIN (VEH-H) MAX	0
AV BREAKDOWNS PER DAY	0
AV QUEUE DELAY/DAY (VEH-H)	0
AV TOTAL DELAY/DAY (VEH-H)	0

AVERAGE ACCIDENT NUMBERS (PIA/DAY)	
MAIN ROUTE WITHOUT WORKS	0.0417
MAIN ROUTE WITH WORKS	0.0354
'DIVERSION'	0.0133

PIA: Personal Injury Accidents

ECONOMIC IMPACT ON ROAD USERS	
ROAD USER COSTS PER DAY	\$56,942
CONGESTED HOURS PER DAY*	5

*Delays Exceeding User-Specified Maximum

**IH 94: STH 16 TO USH 18 (WAUKESHA COUNTY)
 OFF-PEAK DAY 2 LANE CLOSURE
 NO DIVERSION ROUTE (MAX QUEUE METHOD)**

OCTOBER

Analyzed for 2009
 Construction Season

GRAPHICAL REPRESENTATION OF TRAFFIC MODEL INPUT AND OUTPUT

MON-THUR EASTBOUND DIRECTION

