

IH 94: STH 16 TO USH 18 (WAUKESHA COUNTY) OFF-PEAK DAY 2 LANE CLOSURE NO DIVERSION ROUTE (MAX QUEUE METHOD)	OCTOBER
	Analyzed for 2009 Construction Season

SUMMARY OF TRAFFIC MODEL OUTPUT

FRIDAY WESTBOUND DIRECTION

TIME OF DAY	FLOWS AND CAPACITY IN VEH/HR						AVERAGE SPEEDS IN MPH			
	MAIN ROUTE		SITE CAPA CITY	FLOW		AV.DEL PER VEH (MINS)	AVERAGE QUEUE (VEH)	MAIN ROUTE		SITE
	DEMAND FLOW	PCT HEAVY		MAIN ROUTE	'DIVER TED'			WITHOUT WORK ZONE	WITH WORK ZONE	
MID-1 AM	554	0.0	OFF	554	0	0.00	0	70.0	70.0	70.0
1-2 AM	344	0.0	OFF	344	0	0.00	0	70.2	70.2	70.2
2-3 AM	285	0.0	OFF	285	0	0.00	0	70.2	70.2	70.2
3-4 AM	286	0.0	OFF	286	0	0.00	0	70.2	70.2	70.2
4-5 AM	492	0.0	OFF	492	0	0.00	0	70.1	70.1	70.1
5-6 AM	1171	0.0	OFF	1171	0	0.00	0	69.3	69.3	69.3
6-7 AM	2688	0.0	OFF	2688	0	0.00	0	67.4	67.4	67.4
7-8 AM	4058	0.0	OFF	4058	0	0.00	0	63.2	63.2	63.2
8-9 AM	3844	0.0	OFF	3844	0	0.00	0	64.6	64.6	64.6
9-10 AM	3138	0.0	OFF	3138	0	0.00	0	66.8	66.8	66.8
10-11 AM	3319	0.0	1499	1550	1769	16.45+	412	66.6	12.4	36.6
11AM-NOON	3717	0.0	1499	1680	2038	14.42+	378	65.5	13.8	35.8
NOON-1PM	4123	0.0	1499	1500	2623	15.66+	399	62.7	12.8	38.1
1-2 PM	4411	0.0	1500	1500	2911	15.53+	400	60.7	12.8	38.1
2-3 PM	4929	0.0	1500	1500	3429	15.27+	400	57.2	12.8	38.1
3-4 PM	5815	0.0	OFF	5815	0	1.50	137	51.1	39.2	39.2
4-5 PM	6103	0.0	OFF	6103	0	0.89	96	49.2	41.9	41.9
5-6 PM	5945	0.0	OFF	5945	0	1.24	120	50.2	40.3	40.3
6-7 PM	4554	0.0	OFF	4554	0	0.07	2	59.7	58.7	58.7
7-8 PM	2991	0.0	OFF	2991	0	0.00	0	67.0	67.0	67.0
8-9 PM	2387	0.0	OFF	2387	0	0.00	0	67.8	67.8	67.8
9-10 PM	2256	0.0	OFF	2256	0	0.00	0	67.9	67.9	67.9
10-11 PM	1739	0.0	OFF	1739	0	0.00	0	68.6	68.6	68.6
11PM-MID	1187	0.0	OFF	1187	0	0.00	0	69.2	69.2	69.2

"OFF" INDICATES NO ROAD WORK (ALL LANES OPEN TO TRAFFIC)

+ INDICATES QUEUEING EXCEEDS USER-SPECIFIED MAXIMUM LIMIT

----- SITE BREAKDOWN DELAYS -----	
BREAKDOWN DURATION (MINS)	0
RANGE OF QUEUE DELAY - MIN (VEH-H) MAX	0.0
AV BREAKDOWNS PER DAY	0.00
AV QUEUE DELAY/DAY (VEH-H)	0.0
AV TOTAL DELAY/DAY (VEH-H)	0.0

----- SITE ACCIDENT DELAYS -----	
BREAKDOWN DURATION (MINS)	0
RANGE OF QUEUE DELAY - MIN (VEH-H) MAX	0
AV BREAKDOWNS PER DAY	0
AV QUEUE DELAY/DAY (VEH-H)	0
AV TOTAL DELAY/DAY (VEH-H)	0

AVERAGE ACCIDENT NUMBERS (PIA/DAY)	
MAIN ROUTE WITHOUT WORKS	0.0470
MAIN ROUTE WITH WORKS	0.0380
'DIVERSION'	0.0198
<small>PIA: Personal Injury Accidents</small>	
IMPACTS ON ROAD USERS	
ROAD USER COSTS PER DAY	\$72,005
CONGESTED HOURS PER DAY*	5

*Delays Exceeding User-Specified Maximum

IH 94: STH 16 TO USH 18 (WAUKESHA COUNTY)
OFF-PEAK DAY 2 LANE CLOSURE
NO DIVERSION ROUTE (MAX QUEUE METHOD)

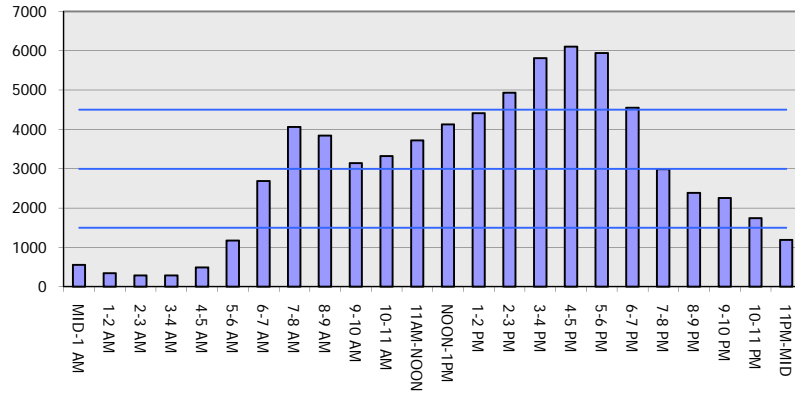
OCTOBER

Analyzed for 2009
 Construction Season

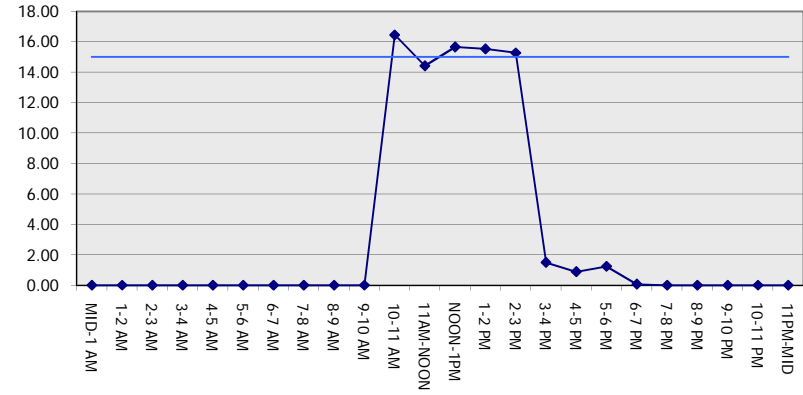
GRAPHICAL REPRESENTATION OF TRAFFIC MODEL INPUT AND OUTPUT

FRIDAY WESTBOUND DIRECTION

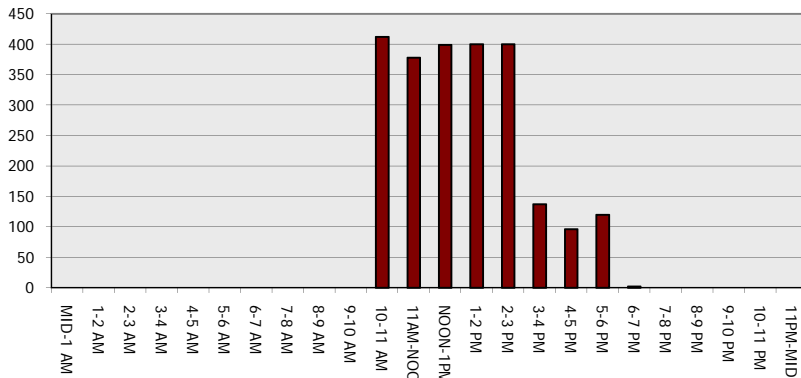
Main Route - Traffic Demand (Vehicles Per Hour)



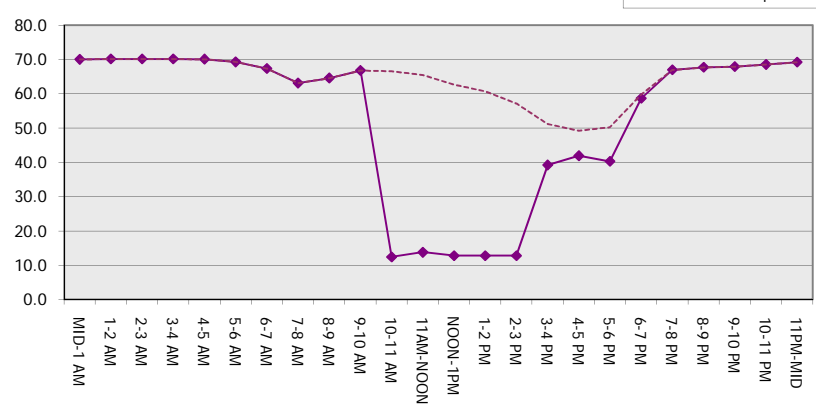
Main Route Average Delay Per Vehicle (Minutes)



Main Route - Average Queue Length (Vehicles)



Main Route - Average Speed (MPH)



IH 94: STH 16 TO USH 18 (WAUKESHA COUNTY) OFF-PEAK DAY 2 LANE CLOSURE NO DIVERSION ROUTE (MAX QUEUE METHOD)	OCTOBER
	Analyzed for 2009 Construction Season

SUMMARY OF TRAFFIC MODEL OUTPUT

FRIDAY EASTBOUND DIRECTION

TIME OF DAY	FLOWS AND CAPACITY IN VEH/HR						AVERAGE SPEEDS IN MPH			
	MAIN ROUTE		SITE CAPA CITY	FLOW		AV.DEL PER VEH (MINS)	AVERAGE QUEUE (VEH)	MAIN ROUTE		SITE
	DEMAND FLOW	PCT HEAVY		MAIN ROUTE	'DIVER TED'			WITHOUT WORK ZONE	WITH WORK ZONE	
MID-1 AM	331	0.0	OFF	331	0	0.00	0	70.2	70.2	70.2
1-2 AM	243	0.0	OFF	243	0	0.00	0	70.2	70.2	70.2
2-3 AM	243	0.0	OFF	243	0	0.00	0	70.2	70.2	70.2
3-4 AM	305	0.0	OFF	305	0	0.00	0	70.2	70.2	70.2
4-5 AM	652	0.0	OFF	652	0	0.00	0	69.9	69.9	69.9
5-6 AM	1994	0.0	OFF	1994	0	0.00	0	68.2	68.2	68.2
6-7 AM	4689	0.0	OFF	4689	0	0.00	0	58.8	58.8	58.8
7-8 AM	5403	0.0	OFF	5403	0	0.00	0	54.0	54.0	54.0
8-9 AM	4500	0.0	OFF	4500	0	0.00	0	60.1	60.1	60.1
9-10 AM	3516	0.0	OFF	3516	0	0.00	0	66.4	66.4	66.4
10-11 AM	3354	0.0	1499	1550	1804	16.45+	412	66.6	12.4	36.6
11AM-NOON	3704	0.0	1499	1680	2024	14.42+	378	65.6	13.8	35.8
NOON-1PM	3746	0.0	1499	1500	2246	15.81+	399	65.3	12.8	38.1
1-2 PM	3695	0.0	1500	1510	2186	15.82+	399	65.6	12.8	37.8
2-3 PM	4001	0.0	1500	1500	2501	15.72+	400	63.5	12.8	37.9
3-4 PM	4665	0.0	OFF	4665	0	0.34	21	59.0	54.7	54.7
4-5 PM	4896	0.0	OFF	4896	0	0.00	0	57.4	57.4	57.4
5-6 PM	4681	0.0	OFF	4681	0	0.00	0	58.9	58.9	58.9
6-7 PM	3725	0.0	OFF	3725	0	0.00	0	65.4	65.4	65.4
7-8 PM	2492	0.0	OFF	2492	0	0.00	0	67.6	67.6	67.6
8-9 PM	1906	0.0	OFF	1906	0	0.00	0	68.4	68.4	68.4
9-10 PM	1751	0.0	OFF	1751	0	0.00	0	68.6	68.6	68.6
10-11 PM	1410	0.0	OFF	1410	0	0.00	0	69.0	69.0	69.0
11PM-MID	992	0.0	OFF	992	0	0.00	0	69.5	69.5	69.5

"OFF" INDICATES NO ROAD WORK (ALL LANES OPEN TO TRAFFIC)

+ INDICATES QUEUEING EXCEEDS USER-SPECIFIED MAXIMUM LIMIT

----- SITE BREAKDOWN DELAYS -----	
BREAKDOWN DURATION (MINS)	0
RANGE OF QUEUE DELAY - MIN (VEH-H) MAX	0.0
AV BREAKDOWNS PER DAY	0.00
AV QUEUE DELAY/DAY (VEH-H)	0.0
AV TOTAL DELAY/DAY (VEH-H)	0.0

----- SITE ACCIDENT DELAYS -----	
BREAKDOWN DURATION (MINS)	0
RANGE OF QUEUE DELAY - MIN (VEH-H) MAX	0
AV BREAKDOWNS PER DAY	0
AV QUEUE DELAY/DAY (VEH-H)	0
AV TOTAL DELAY/DAY (VEH-H)	0

AVERAGE ACCIDENT NUMBERS (PIA/DAY)	
MAIN ROUTE WITHOUT WORKS	0.0447
MAIN ROUTE WITH WORKS	0.0370
'DIVERSION'	0.0167

PIA: Personal Injury Accidents

ECONOMIC IMPACT ON ROAD USERS	
ROAD USER COSTS PER DAY	\$61,869
CONGESTED HOURS PER DAY*	5

*Delays Exceeding User-Specified Maximum

**IH 94: STH 16 TO USH 18 (WAUKESHA COUNTY)
OFF-PEAK DAY 2 LANE CLOSURE
NO DIVERSION ROUTE (MAX QUEUE METHOD)**

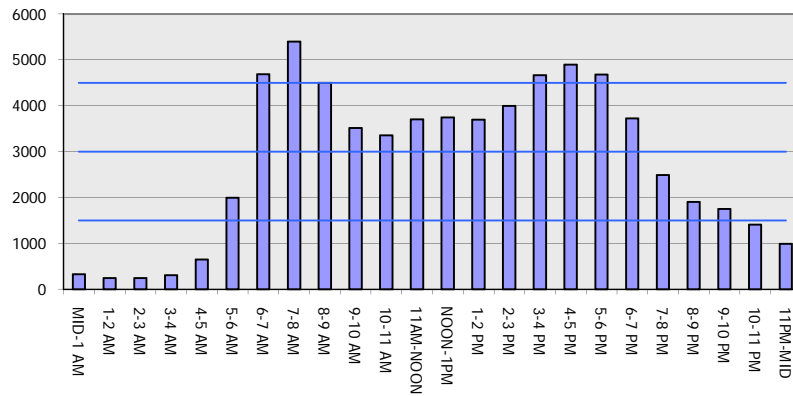
OCTOBER

Analyzed for 2009
Construction Season

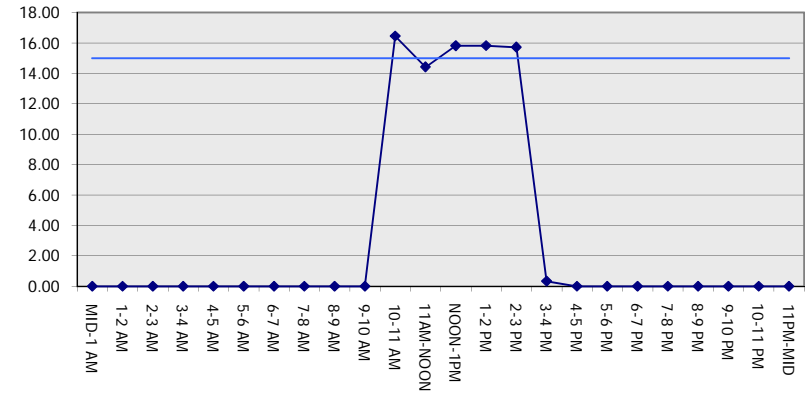
GRAPHICAL REPRESENTATION OF TRAFFIC MODEL INPUT AND OUTPUT

FRIDAY EASTBOUND DIRECTION

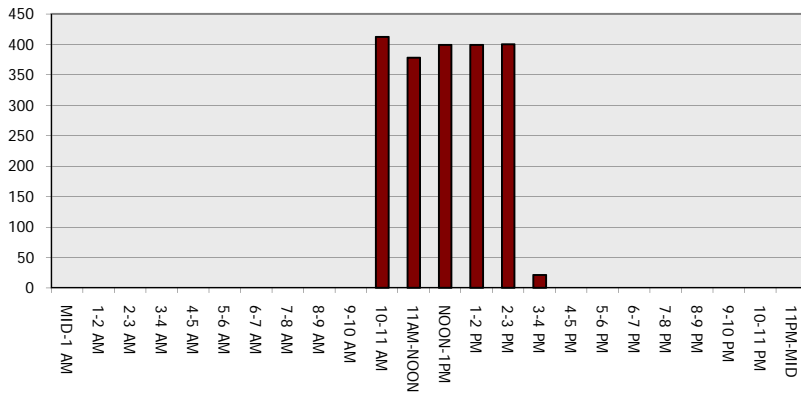
Main Route - Traffic Demand (Vehicles Per Hour)



Main Route Average Delay Per Vehicle (Minutes)



Main Route - Average Queue Length (Vehicles)



Main Route - Average Speed (MPH)

