

IH 94: STH 16 TO USH 18 (WAUKESHA COUNTY) OFF-PEAK DAY CLOSURE NO DIVERSION ROUTE (MAX QUEUE METHOD)	OCTOBER
	Analyzed for 2009 Construction Season

SUMMARY OF TRAFFIC MODEL OUTPUT

FRIDAY WESTBOUND DIRECTION

TIME OF DAY	FLOWS AND CAPACITY IN VEH/HR						AVERAGE SPEEDS IN MPH			
	MAIN ROUTE		SITE CAPA CITY	FLOW		AV.DEL PER VEH (MINS)	AVERAGE QUEUE (VEH)	MAIN ROUTE		SITE
	DEMAND FLOW	PCT HEAVY		MAIN ROUTE	'DIVER TED'			WITHOUT WORK ZONE	WITH WORK ZONE	
MID-1 AM	554	0.0	OFF	554	0	0.00	0	70.0	70.0	70.0
1-2 AM	344	0.0	OFF	344	0	0.00	0	70.2	70.2	70.2
2-3 AM	285	0.0	OFF	285	0	0.00	0	70.2	70.2	70.2
3-4 AM	286	0.0	OFF	286	0	0.00	0	70.2	70.2	70.2
4-5 AM	492	0.0	OFF	492	0	0.00	0	70.1	70.1	70.1
5-6 AM	1171	0.0	OFF	1171	0	0.00	0	69.3	69.3	69.3
6-7 AM	2688	0.0	OFF	2688	0	0.00	0	67.4	67.4	67.4
7-8 AM	4058	0.0	OFF	4058	0	0.00	0	63.2	63.2	63.2
8-9 AM	3844	0.0	OFF	3844	0	0.00	0	64.6	64.6	64.6
9-10 AM	3138	0.0	OFF	3138	0	0.00	0	66.8	66.8	66.8
10-11 AM	3319	0.0	2999	3319	0	2.97	141	66.6	37.3	37.3
11AM-NOON	3717	0.0	3000	3495	223	11.36+	619	65.5	16.6	37.3
NOON-1PM	4123	0.0	3000	2999	1124	15.10+	806	62.7	13.4	37.3
1-2 PM	4411	0.0	2999	2999	1412	14.99+	808	60.7	13.4	37.3
2-3 PM	4929	0.0	3000	3000	1929	14.76+	809	57.2	13.4	37.3
3-4 PM	5815	0.0	OFF	5815	0	7.31	718	51.1	20.6	20.6
4-5 PM	6103	0.0	OFF	6103	0	6.70	677	49.2	21.3	21.3
5-6 PM	5945	0.0	OFF	5945	0	7.05	701	50.2	20.9	20.9
6-7 PM	4554	0.0	OFF	4554	0	1.92	156	59.7	41.0	41.0
7-8 PM	2991	0.0	OFF	2991	0	0.00	0	67.0	67.0	67.0
8-9 PM	2387	0.0	OFF	2387	0	0.00	0	67.8	67.8	67.8
9-10 PM	2256	0.0	OFF	2256	0	0.00	0	67.9	67.9	67.9
10-11 PM	1739	0.0	OFF	1739	0	0.00	0	68.6	68.6	68.6
11PM-MID	1187	0.0	OFF	1187	0	0.00	0	69.2	69.2	69.2

"OFF" INDICATES NO ROAD WORK (ALL LANES OPEN TO TRAFFIC)

+ INDICATES QUEUEING EXCEEDS USER-SPECIFIED MAXIMUM LIMIT

----- SITE BREAKDOWN DELAYS -----	
BREAKDOWN DURATION (MINS)	0
RANGE OF QUEUE DELAY - MIN (VEH-H) MAX	0.0
AV BREAKDOWNS PER DAY	0.00
AV QUEUE DELAY/DAY (VEH-H)	0.0
AV TOTAL DELAY/DAY (VEH-H)	0.0

----- SITE ACCIDENT DELAYS -----	
BREAKDOWN DURATION (MINS)	0
RANGE OF QUEUE DELAY - MIN (VEH-H) MAX	0
AV BREAKDOWNS PER DAY	0
AV QUEUE DELAY/DAY (VEH-H)	0
AV TOTAL DELAY/DAY (VEH-H)	0

AVERAGE ACCIDENT NUMBERS (PIA/DAY)	
MAIN ROUTE WITHOUT WORKS	0.0470
MAIN ROUTE WITH WORKS	0.0428
'DIVERSION'	0.0073
PIA: Personal Injury Accidents	
IMPACTS ON ROAD USERS	
ROAD USER COSTS PER DAY	\$65,996
CONGESTED HOURS PER DAY*	4

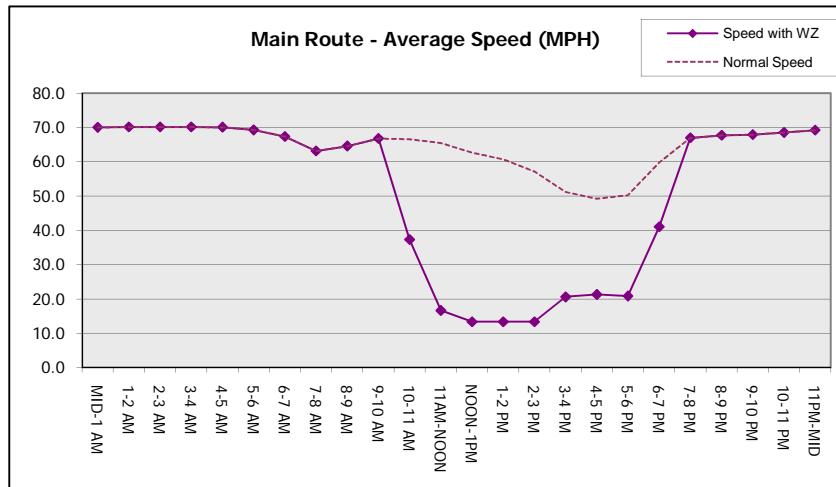
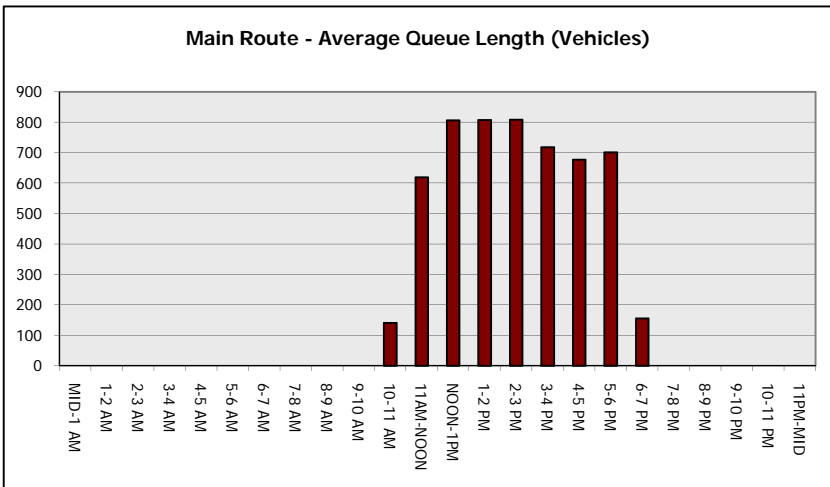
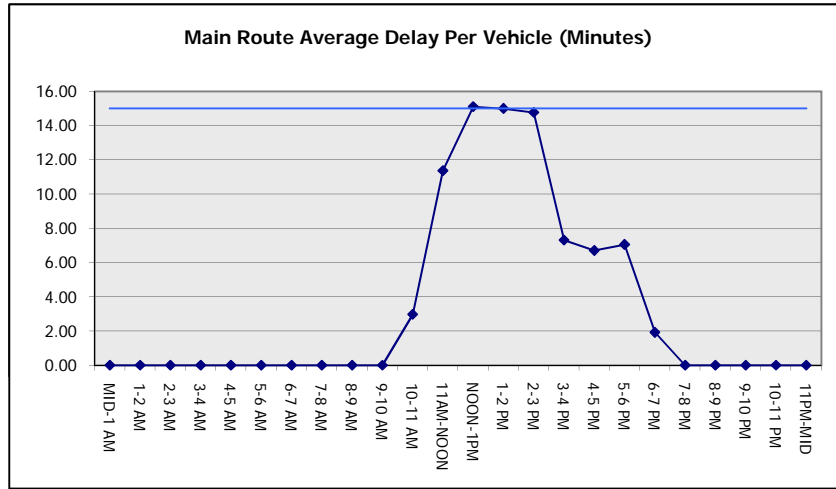
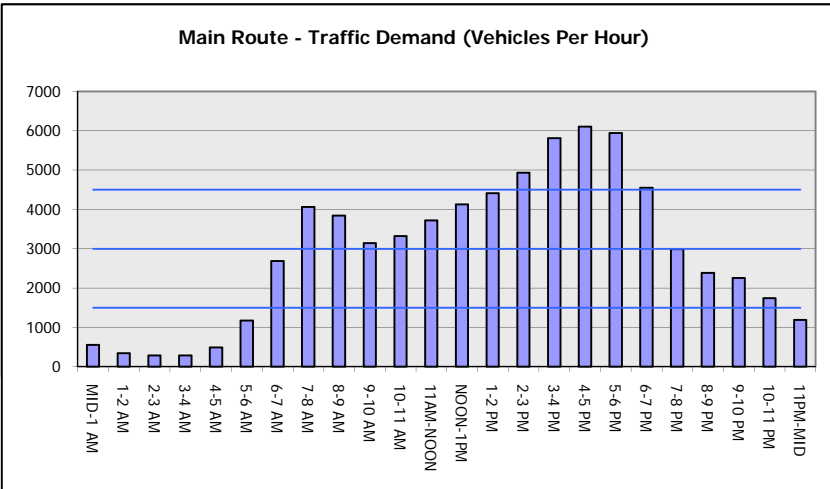
*Delays Exceeding User-Specified Maximum

**IH 94: STH 16 TO USH 18 (WAUKESHA COUNTY)
OFF-PEAK DAY CLOSURE
NO DIVERSION ROUTE (MAX QUEUE METHOD)**

OCTOBER
Analyzed for 2009
Construction Season

GRAPHICAL REPRESENTATION OF TRAFFIC MODEL INPUT AND OUTPUT

FRIDAY WESTBOUND DIRECTION



IH 94: STH 16 TO USH 18 (WAUKESHA COUNTY) OFF-PEAK DAY CLOSURE NO DIVERSION ROUTE (MAX QUEUE METHOD)	OCTOBER
	Analyzed for 2009 Construction Season

SUMMARY OF TRAFFIC MODEL OUTPUT

FRIDAY EASTBOUND DIRECTION

TIME OF DAY	FLOWS AND CAPACITY IN VEH/HR						AVERAGE SPEEDS IN MPH			
	MAIN ROUTE		SITE CAPA CITY	FLOW		AV.DEL PER VEH (MINS)	AVERAGE QUEUE (VEH)	MAIN ROUTE		SITE
	DEMAND FLOW	PCT HEAVY		MAIN ROUTE	'DIVER TED'			WITHOUT WORK ZONE	WITH WORK ZONE	
MID-1 AM	331	0.0	OFF	331	0	0.00	0	70.2	70.2	70.2
1-2 AM	243	0.0	OFF	243	0	0.00	0	70.2	70.2	70.2
2-3 AM	243	0.0	OFF	243	0	0.00	0	70.2	70.2	70.2
3-4 AM	305	0.0	OFF	305	0	0.00	0	70.2	70.2	70.2
4-5 AM	652	0.0	OFF	652	0	0.00	0	69.9	69.9	69.9
5-6 AM	1994	0.0	OFF	1994	0	0.00	0	68.2	68.2	68.2
6-7 AM	4689	0.0	OFF	4689	0	0.00	0	58.8	58.8	58.8
7-8 AM	5403	0.0	OFF	5403	0	0.00	0	54.0	54.0	54.0
8-9 AM	4500	0.0	OFF	4500	0	0.00	0	60.1	60.1	60.1
9-10 AM	3516	0.0	OFF	3516	0	0.00	0	66.4	66.4	66.4
10-11 AM	3354	0.0	2999	3354	0	3.46	171	66.6	34.8	37.3
11AM-NOON	3704	0.0	3000	3406	298	12.05+	652	65.6	15.9	37.3
NOON-1PM	3746	0.0	2999	3002	744	15.25+	805	65.3	13.4	37.3
1-2 PM	3695	0.0	3000	3002	694	15.27+	805	65.6	13.4	37.3
2-3 PM	4001	0.0	3000	3007	994	15.15+	806	63.5	13.4	37.3
3-4 PM	4665	0.0	OFF	4665	0	2.64	222	59.0	36.5	36.5
4-5 PM	4896	0.0	OFF	4896	0	0.00	0	57.4	57.4	57.4
5-6 PM	4681	0.0	OFF	4681	0	0.00	0	58.9	58.9	58.9
6-7 PM	3725	0.0	OFF	3725	0	0.00	0	65.4	65.4	65.4
7-8 PM	2492	0.0	OFF	2492	0	0.00	0	67.6	67.6	67.6
8-9 PM	1906	0.0	OFF	1906	0	0.00	0	68.4	68.4	68.4
9-10 PM	1751	0.0	OFF	1751	0	0.00	0	68.6	68.6	68.6
10-11 PM	1410	0.0	OFF	1410	0	0.00	0	69.0	69.0	69.0
11PM-MID	992	0.0	OFF	992	0	0.00	0	69.5	69.5	69.5

"OFF" INDICATES NO ROAD WORK (ALL LANES OPEN TO TRAFFIC)

+ INDICATES QUEUEING EXCEEDS USER-SPECIFIED MAXIMUM LIMIT

----- SITE BREAKDOWN DELAYS -----	
BREAKDOWN DURATION (MINS)	0
RANGE OF QUEUE DELAY - MIN (VEH-H) MAX	0.0
AV BREAKDOWNS PER DAY	0.00
AV QUEUE DELAY/DAY (VEH-H)	0.0
AV TOTAL DELAY/DAY (VEH-H)	0.0

----- SITE ACCIDENT DELAYS -----	
BREAKDOWN DURATION (MINS)	0
RANGE OF QUEUE DELAY - MIN (VEH-H) MAX	0
AV BREAKDOWNS PER DAY	0
AV QUEUE DELAY/DAY (VEH-H)	0
AV TOTAL DELAY/DAY (VEH-H)	0

AVERAGE ACCIDENT NUMBERS (PIA/DAY)	
MAIN ROUTE WITHOUT WORKS	0.0447
MAIN ROUTE WITH WORKS	0.0419
'DIVERSION'	0.0042

PIA: Personal Injury Accidents

ECONOMIC IMPACT ON ROAD USERS	
ROAD USER COSTS PER DAY	\$41,363
CONGESTED HOURS PER DAY*	4

*Delays Exceeding User-Specified Maximum

**IH 94: STH 16 TO USH 18 (WAUKESHA COUNTY)
OFF-PEAK DAY CLOSURE
NO DIVERSION ROUTE (MAX QUEUE METHOD)**

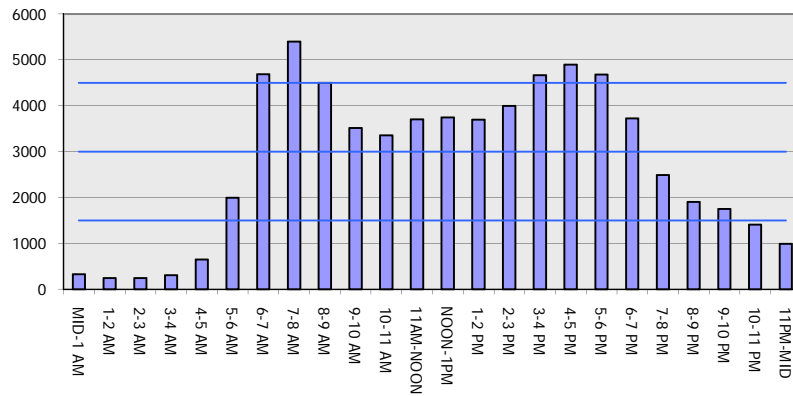
OCTOBER

Analyzed for 2009
Construction Season

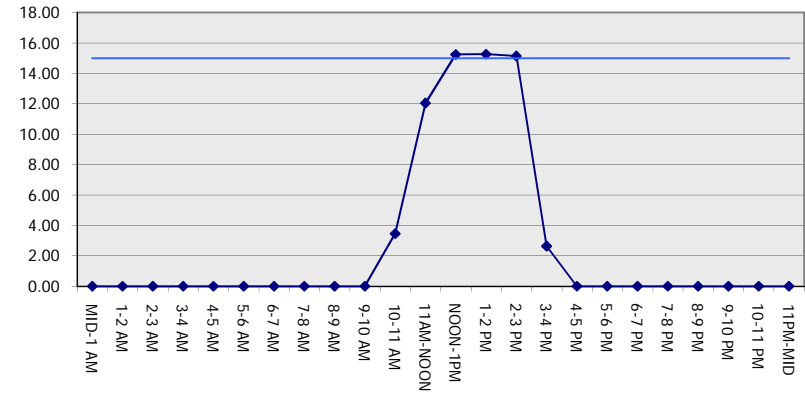
GRAPHICAL REPRESENTATION OF TRAFFIC MODEL INPUT AND OUTPUT

FRIDAY EASTBOUND DIRECTION

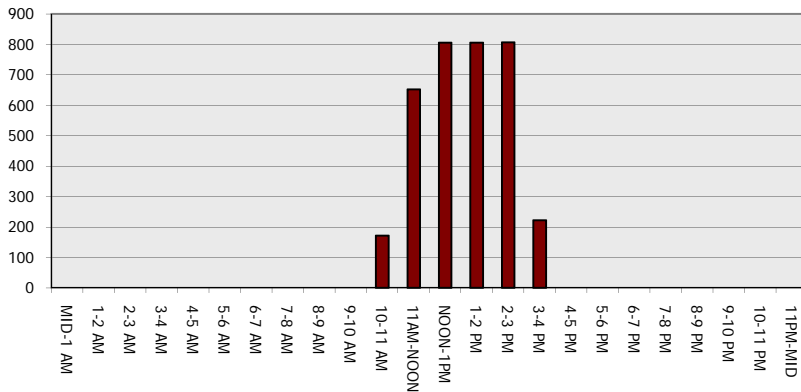
Main Route - Traffic Demand (Vehicles Per Hour)



Main Route Average Delay Per Vehicle (Minutes)



Main Route - Average Queue Length (Vehicles)



Main Route - Average Speed (MPH)

