

IH 94: STH 16 TO USH 18 (WAUKESHA COUNTY) OFF-PEAK DAY CLOSURE NO DIVERSION ROUTE (MAX QUEUE METHOD)	AUGUST
	Analyzed for 2009 Construction Season

SUMMARY OF TRAFFIC MODEL OUTPUT

SUNDAY WESTBOUND DIRECTION

TIME OF DAY	FLOWS AND CAPACITY IN VEH/HR						AVERAGE SPEEDS IN MPH			
	MAIN ROUTE		SITE CAPA CITY	FLOW		AV.DEL PER VEH (MINS)	AVERAGE QUEUE (VEH)	MAIN ROUTE		SITE
	DEMAND FLOW	PCT HEAVY		MAIN ROUTE	'DIVER TED'			WITHOUT WORK ZONE	WITH WORK ZONE	
MID-1 AM	950	0.0	OFF	950	0	0.00	0	69.6	69.6	69.6
1-2 AM	530	0.0	OFF	530	0	0.00	0	70.0	70.0	70.0
2-3 AM	387	0.0	OFF	387	0	0.00	0	70.2	70.2	70.2
3-4 AM	229	0.0	OFF	229	0	0.00	0	70.2	70.2	70.2
4-5 AM	185	0.0	OFF	185	0	0.00	0	70.2	70.2	70.2
5-6 AM	347	0.0	OFF	347	0	0.00	0	70.2	70.2	70.2
6-7 AM	602	0.0	OFF	602	0	0.00	0	70.0	70.0	70.0
7-8 AM	965	0.0	OFF	965	0	0.00	0	69.6	69.6	69.6
8-9 AM	1350	0.0	OFF	1350	0	0.00	0	69.1	69.1	69.1
9-10 AM	1963	0.0	3000	1963	0	0.34	0	68.3	62.6	49.7
10-11 AM	2366	0.0	3000	2366	0	0.33	0	67.8	62.3	49.7
11AM-NOON	2745	0.0	2999	2745	0	0.56	0	67.3	58.6	41.6
NOON-1PM	3023	0.0	2999	3023	0	0.87	8	67.0	54.4	37.4
1-2 PM	3110	0.0	3000	3110	0	2.33	91	66.9	41.3	37.3
2-3 PM	2966	0.0	2999	2966	0	3.07	129	67.1	36.9	37.3
3-4 PM	3038	0.0	3000	3038	0	2.94	122	66.9	37.6	37.3
4-5 PM	3178	0.0	3000	3178	0	4.92	235	66.8	29.0	37.3
5-6 PM	3058	0.0	2999	3058	0	7.57	377	66.9	22.2	37.3
6-7 PM	2434	0.0	2999	2434	0	2.44	155	67.7	40.9	44.0
7-8 PM	2088	0.0	OFF	2088	0	0.00	0	68.1	68.1	68.1
8-9 PM	1693	0.0	OFF	1693	0	0.00	0	68.6	68.6	68.6
9-10 PM	1389	0.0	OFF	1389	0	0.00	0	69.0	69.0	69.0
10-11 PM	1062	0.0	OFF	1062	0	0.00	0	69.4	69.4	69.4
11PM-MID	728	0.0	OFF	728	0	0.00	0	69.8	69.8	69.8

"OFF" INDICATES NO ROAD WORK (ALL LANES OPEN TO TRAFFIC)

----- SITE BREAKDOWN DELAYS -----	
BREAKDOWN DURATION (MINS)	0
RANGE OF QUEUE DELAY - MIN (VEH-H) MAX	0.0
AV BREAKDOWNS PER DAY	0.00
AV QUEUE DELAY/DAY (VEH-H)	0.0
AV TOTAL DELAY/DAY (VEH-H)	0.0

----- SITE ACCIDENT DELAYS -----	
BREAKDOWN DURATION (MINS)	0
RANGE OF QUEUE DELAY - MIN (VEH-H) MAX	0
AV BREAKDOWNS PER DAY	0
AV QUEUE DELAY/DAY (VEH-H)	0
AV TOTAL DELAY/DAY (VEH-H)	0

AVERAGE ACCIDENT NUMBERS (PIA/DAY)	
MAIN ROUTE WITHOUT WORKS	0.0270
MAIN ROUTE WITH WORKS	0.0252
'DIVERSION'	0.0000
<small>PIA: Personal Injury Accidents</small>	
IMPACTS ON ROAD USERS	
ROAD USER COSTS PER DAY	\$20,757
CONGESTED HOURS PER DAY*	0

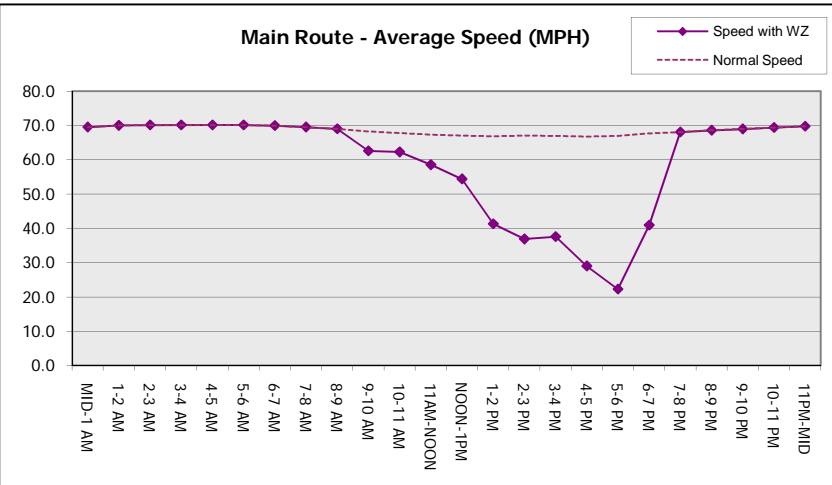
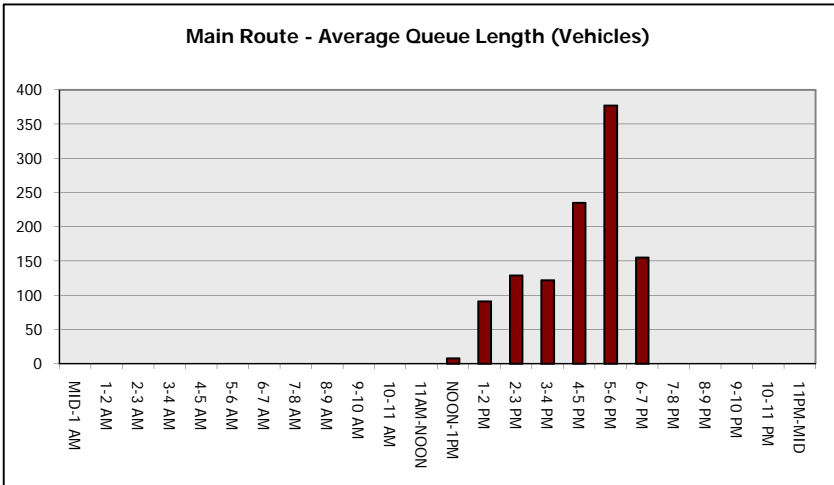
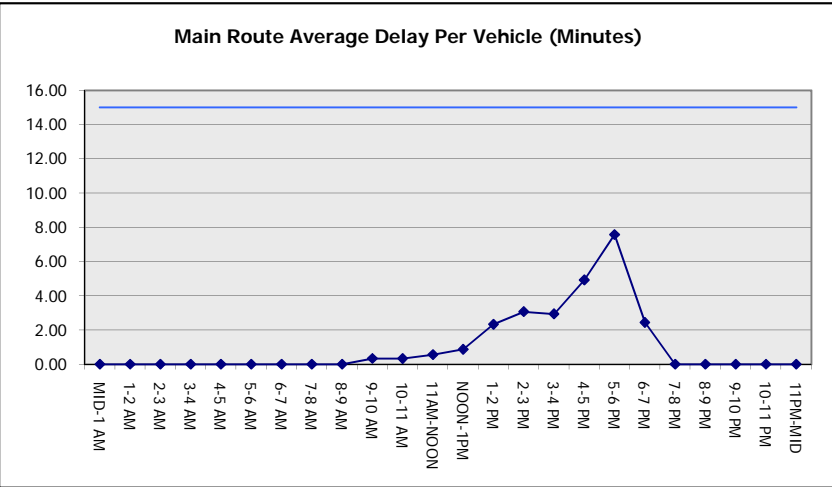
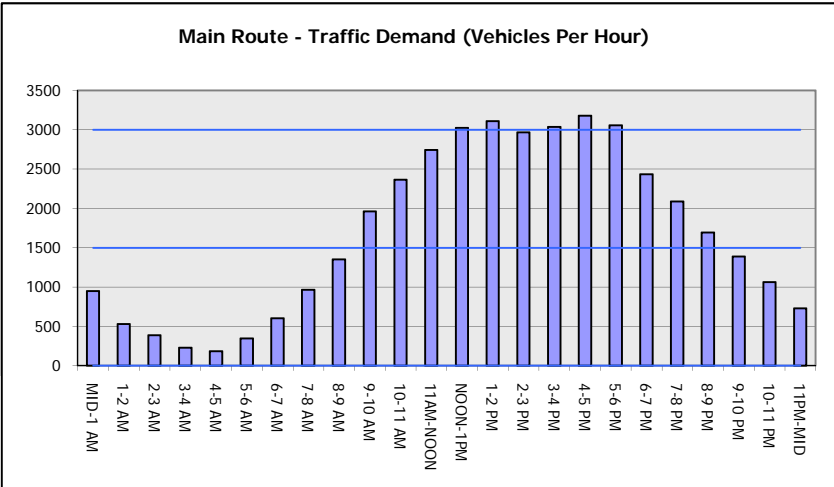
*Delays Exceeding User-Specified Maximum

**IH 94: STH 16 TO USH 18 (WAUKESHA COUNTY)
OFF-PEAK DAY CLOSURE
NO DIVERSION ROUTE (MAX QUEUE METHOD)**

AUGUST
Analyzed for 2009
Construction Season

GRAPHICAL REPRESENTATION OF TRAFFIC MODEL INPUT AND OUTPUT

SUNDAY WESTBOUND DIRECTION



IH 94: STH 16 TO USH 18 (WAUKESHA COUNTY) OFF-PEAK DAY CLOSURE NO DIVERSION ROUTE (MAX QUEUE METHOD)	AUGUST
	Analyzed for 2009 Construction Season

SUMMARY OF TRAFFIC MODEL OUTPUT

SUNDAY EASTBOUND DIRECTION

TIME OF DAY	FLOWS AND CAPACITY IN VEH/HR						AVERAGE SPEEDS IN MPH			
	MAIN ROUTE		SITE CAPA CITY	FLOW		AV.DEL PER VEH (MINS)	AVERAGE QUEUE (VEH)	MAIN ROUTE		SITE
	DEMAND FLOW	PCT HEAVY		MAIN ROUTE	'DIVER TED'			WITHOUT WORK ZONE	WITH WORK ZONE	
MID-1 AM	710	0.0	OFF	710	0	0.00	0	69.9	69.9	69.9
1-2 AM	404	0.0	OFF	404	0	0.00	0	70.2	70.2	70.2
2-3 AM	273	0.0	OFF	273	0	0.00	0	70.2	70.2	70.2
3-4 AM	198	0.0	OFF	198	0	0.00	0	70.2	70.2	70.2
4-5 AM	245	0.0	OFF	245	0	0.00	0	70.2	70.2	70.2
5-6 AM	349	0.0	OFF	349	0	0.00	0	70.2	70.2	70.2
6-7 AM	618	0.0	OFF	618	0	0.00	0	70.0	70.0	70.0
7-8 AM	877	0.0	OFF	877	0	0.00	0	69.6	69.6	69.6
8-9 AM	1365	0.0	OFF	1365	0	0.00	0	69.1	69.1	69.1
9-10 AM	2306	0.0	2999	2306	0	0.39	0	67.9	61.5	47.5
10-11 AM	3422	0.0	2999	3422	0	2.93	151	66.5	37.5	37.3
11AM-NOON	4209	0.0	3000	3448	762	13.72+	745	62.1	14.3	37.5
NOON-1PM	4206	0.0	2999	2986	1220	15.08+	807	62.1	13.4	37.3
1-2 PM	3955	0.0	2999	2994	961	15.17+	806	63.8	13.4	37.3
2-3 PM	3994	0.0	2999	2994	1000	15.16+	806	63.6	13.4	37.3
3-4 PM	3798	0.0	3000	2999	800	15.23+	805	64.9	13.4	37.3
4-5 PM	3894	0.0	2999	2998	897	15.19+	805	64.3	13.4	37.3
5-6 PM	3652	0.0	3000	2999	654	15.28+	805	65.9	13.4	37.3
6-7 PM	3428	0.0	2999	2999	429	15.32+	805	66.4	13.4	37.3
7-8 PM	2872	0.0	OFF	2872	0	1.21	112	67.2	50.7	50.7
8-9 PM	2636	0.0	OFF	2636	0	0.00	0	67.4	67.4	67.4
9-10 PM	1891	0.0	OFF	1891	0	0.00	0	68.4	68.4	68.4
10-11 PM	1152	0.0	OFF	1152	0	0.00	0	69.3	69.3	69.3
11PM-MID	678	0.0	OFF	678	0	0.00	0	69.9	69.9	69.9

"OFF" INDICATES NO ROAD WORK (ALL LANES OPEN TO TRAFFIC)

+ INDICATES QUEUEING EXCEEDS USER-SPECIFIED MAXIMUM LIMIT

----- SITE BREAKDOWN DELAYS -----	
BREAKDOWN DURATION (MINS)	0
RANGE OF QUEUE DELAY - MIN (VEH-H) MAX	0.0
AV BREAKDOWNS PER DAY	0.00
AV QUEUE DELAY/DAY (VEH-H)	0.0
AV TOTAL DELAY/DAY (VEH-H)	0.0

----- SITE ACCIDENT DELAYS -----	
BREAKDOWN DURATION (MINS)	0
RANGE OF QUEUE DELAY - MIN (VEH-H) MAX	0
AV BREAKDOWNS PER DAY	0
AV QUEUE DELAY/DAY (VEH-H)	0
AV TOTAL DELAY/DAY (VEH-H)	0

AVERAGE ACCIDENT NUMBERS (PIA/DAY)	
MAIN ROUTE WITHOUT WORKS	0.0342
MAIN ROUTE WITH WORKS	0.0277
'DIVERSION'	0.0104

PIA: Personal Injury Accidents

ECONOMIC IMPACT ON ROAD USERS	
ROAD USER COSTS PER DAY	\$132,143
CONGESTED HOURS PER DAY*	8

*Delays Exceeding User-Specified Maximum

**IH 94: STH 16 TO USH 18 (WAUKESHA COUNTY)
OFF-PEAK DAY CLOSURE
NO DIVERSION ROUTE (MAX QUEUE METHOD)**

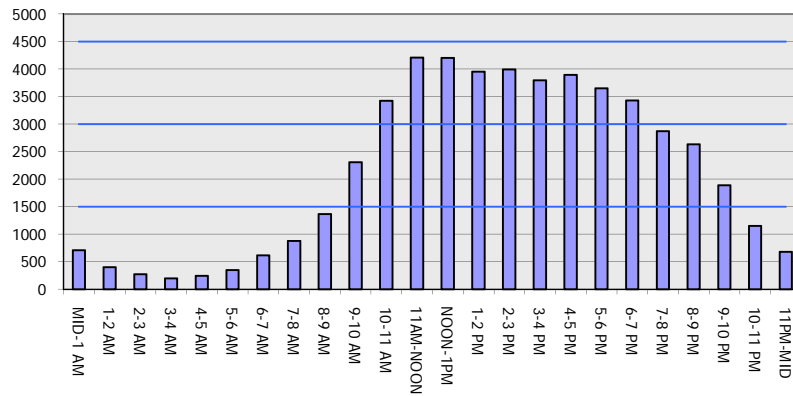
AUGUST

Analyzed for 2009
Construction Season

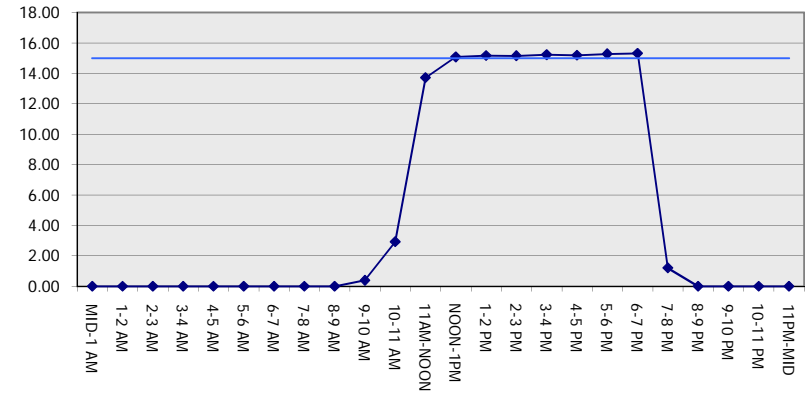
GRAPHICAL REPRESENTATION OF TRAFFIC MODEL INPUT AND OUTPUT

SUNDAY EASTBOUND DIRECTION

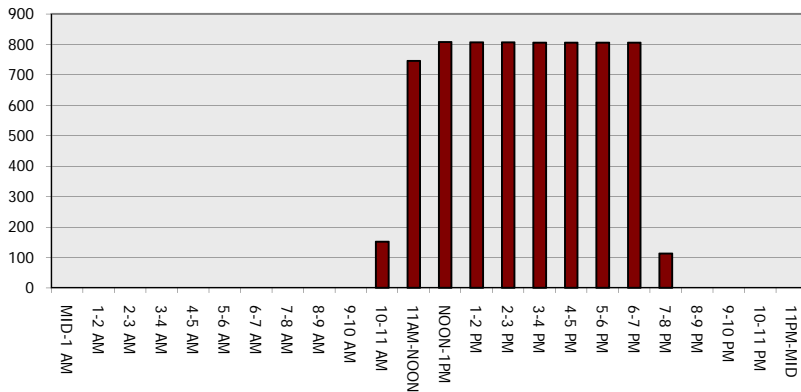
Main Route - Traffic Demand (Vehicles Per Hour)



Main Route Average Delay Per Vehicle (Minutes)



Main Route - Average Queue Length (Vehicles)



Main Route - Average Speed (MPH)

