

IH 94: STH 16 TO USH 18 (WAUKESHA COUNTY) OFF-PEAK DAY CLOSURE NO DIVERSION ROUTE (MAX QUEUE METHOD)	AUGUST
	Analyzed for 2009 Construction Season

SUMMARY OF TRAFFIC MODEL OUTPUT

MON-THUR WESTBOUND DIRECTION

TIME OF DAY	FLOWS AND CAPACITY IN VEH/HR						AVERAGE SPEEDS IN MPH			
	MAIN ROUTE		SITE CAPA CITY	FLOW		AV.DEL PER VEH (MINS)	AVERAGE QUEUE (VEH)	MAIN ROUTE		SITE
	DEMAND FLOW	PCT HEAVY		MAIN ROUTE	'DIVER TED'			WITHOUT WORK ZONE	WITH WORK ZONE	
MID-1 AM	537	0.0	OFF	537	0	0.00	0	70.0	70.0	70.0
1-2 AM	315	0.0	OFF	315	0	0.00	0	70.2	70.2	70.2
2-3 AM	244	0.0	OFF	244	0	0.00	0	70.2	70.2	70.2
3-4 AM	270	0.0	OFF	270	0	0.00	0	70.2	70.2	70.2
4-5 AM	455	0.0	OFF	455	0	0.00	0	70.2	70.2	70.2
5-6 AM	1108	0.0	OFF	1108	0	0.00	0	69.4	69.4	69.4
6-7 AM	2341	0.0	OFF	2341	0	0.00	0	67.8	67.8	67.8
7-8 AM	3351	0.0	OFF	3351	0	0.00	0	66.6	66.6	66.6
8-9 AM	3073	0.0	OFF	3073	0	0.00	0	66.9	66.9	66.9
9-10 AM	2440	0.0	OFF	2440	0	0.00	0	67.7	67.7	67.7
10-11 AM	2446	0.0	3000	2446	0	0.37	0	67.7	61.6	48.1
11AM-NOON	2677	0.0	3000	2677	0	0.52	0	67.4	59.2	42.9
NOON-1PM	2875	0.0	2999	2875	0	0.65	0	67.1	57.3	39.2
1-2 PM	2962	0.0	2999	2962	0	0.74	2	67.1	56.1	38.0
2-3 PM	3330	0.0	3000	3330	0	2.96	142	66.6	37.3	37.3
3-4 PM	3985	0.0	OFF	3985	0	0.44	28	63.7	57.3	57.3
4-5 PM	4421	0.0	OFF	4421	0	0.00	0	60.7	60.7	60.7
5-6 PM	4438	0.0	OFF	4438	0	0.00	0	60.5	60.5	60.5
6-7 PM	3320	0.0	OFF	3320	0	0.00	0	66.6	66.6	66.6
7-8 PM	2399	0.0	OFF	2399	0	0.00	0	67.8	67.8	67.8
8-9 PM	2120	0.0	OFF	2120	0	0.00	0	68.1	68.1	68.1
9-10 PM	1875	0.0	OFF	1875	0	0.00	0	68.4	68.4	68.4
10-11 PM	1461	0.0	OFF	1461	0	0.00	0	68.9	68.9	68.9
11PM-MID	1006	0.0	OFF	1006	0	0.00	0	69.5	69.5	69.5

"OFF" INDICATES NO ROAD WORK (ALL LANES OPEN TO TRAFFIC)

----- SITE BREAKDOWN DELAYS -----	
BREAKDOWN DURATION (MINS)	0
RANGE OF QUEUE DELAY - MIN	0.0
(VEH-H) MAX	0.0
AV BREAKDOWNS PER DAY	0.00
AV QUEUE DELAY/DAY (VEH-H)	0.0
AV TOTAL DELAY/DAY (VEH-H)	0.0

----- SITE ACCIDENT DELAYS -----	
BREAKDOWN DURATION (MINS)	0
RANGE OF QUEUE DELAY - MIN	0
(VEH-H) MAX	0
AV BREAKDOWNS PER DAY	0
AV QUEUE DELAY/DAY (VEH-H)	0
AV TOTAL DELAY/DAY (VEH-H)	0

AVERAGE ACCIDENT NUMBERS (PIA/DAY)	
MAIN ROUTE WITHOUT WORKS	0.0357
MAIN ROUTE WITH WORKS	0.0348
'DIVERSION'	0.0000
PIA: Personal Injury Accidents	
IMPACTS ON ROAD USERS	
ROAD USER COSTS PER DAY	\$3,687
CONGESTED HOURS PER DAY*	0

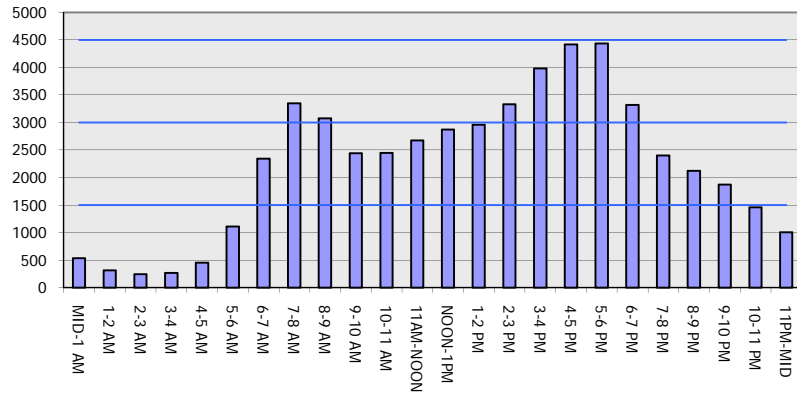
*Delays Exceeding User-Specified Maximum

**IH 94: STH 16 TO USH 18 (WAUKESHA COUNTY)
OFF-PEAK DAY CLOSURE
NO DIVERSION ROUTE (MAX QUEUE METHOD)**

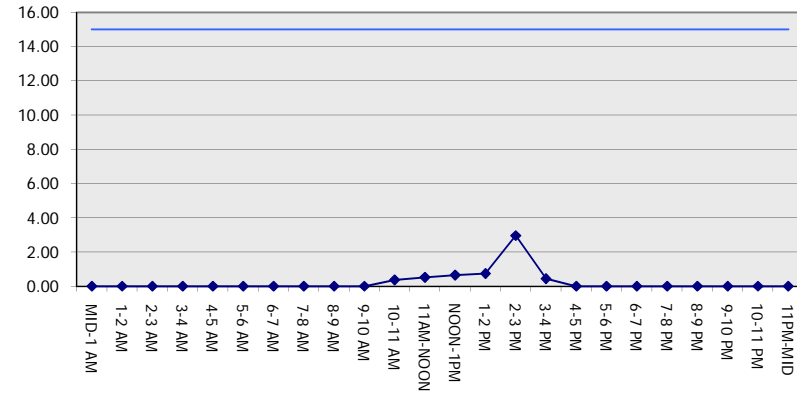
AUGUST
Analyzed for 2009
Construction Season

GRAPHICAL REPRESENTATION OF TRAFFIC MODEL INPUT AND OUTPUT
MON-THUR WESTBOUND DIRECTION

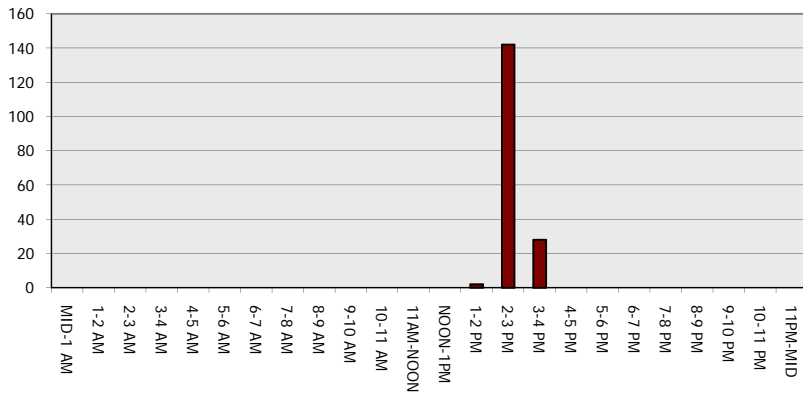
Main Route - Traffic Demand (Vehicles Per Hour)



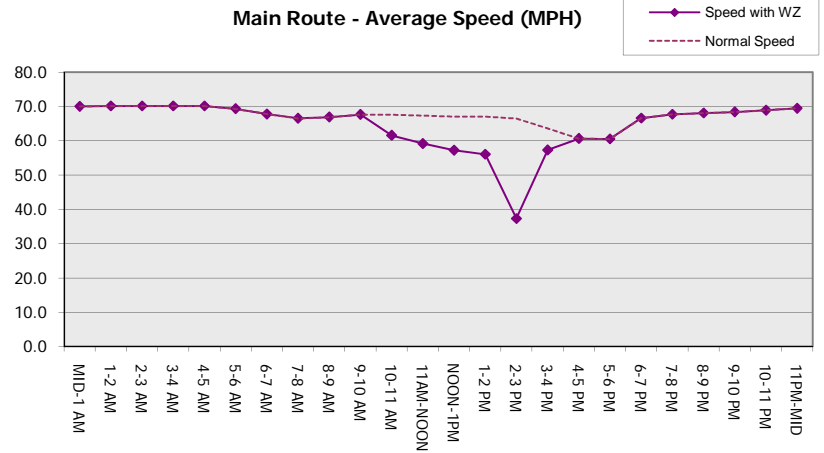
Main Route Average Delay Per Vehicle (Minutes)



Main Route - Average Queue Length (Vehicles)



Main Route - Average Speed (MPH)



IH 94: STH 16 TO USH 18 (WAUKESHA COUNTY) OFF-PEAK DAY CLOSURE NO DIVERSION ROUTE (MAX QUEUE METHOD)	AUGUST
	Analyzed for 2009 Construction Season

SUMMARY OF TRAFFIC MODEL OUTPUT

MON-THUR EASTBOUND DIRECTION

TIME OF DAY	FLOWS AND CAPACITY IN VEH/HR						AVERAGE SPEEDS IN MPH			
	MAIN ROUTE		SITE CAPA CITY	FLOW		AV.DEL PER VEH (MINS)	AVERAGE QUEUE (VEH)	MAIN ROUTE		SITE
	DEMAND FLOW	PCT HEAVY		MAIN ROUTE	'DIVER TED'			WITHOUT WORK ZONE	WITH WORK ZONE	
MID-1 AM	344	0.0	OFF	344	0	0.00	0	70.2	70.2	70.2
1-2 AM	249	0.0	OFF	249	0	0.00	0	70.2	70.2	70.2
2-3 AM	209	0.0	OFF	209	0	0.00	0	70.2	70.2	70.2
3-4 AM	283	0.0	OFF	283	0	0.00	0	70.2	70.2	70.2
4-5 AM	709	0.0	OFF	709	0	0.00	0	69.9	69.9	69.9
5-6 AM	2215	0.0	OFF	2215	0	0.00	0	68.0	68.0	68.0
6-7 AM	4932	0.0	OFF	4932	0	0.00	0	57.1	57.1	57.1
7-8 AM	5796	0.0	OFF	5796	0	0.00	0	51.2	51.2	51.2
8-9 AM	4715	0.0	OFF	4715	0	0.00	0	58.6	58.6	58.6
9-10 AM	3676	0.0	OFF	3676	0	0.00	0	65.8	65.8	65.8
10-11 AM	3512	0.0	2999	3512	0	4.72	255	66.4	29.6	37.3
11AM-NOON	3701	0.0	3000	3344	357	14.03+	745	65.6	14.2	37.3
NOON-1PM	3595	0.0	3000	2998	597	15.31+	805	66.3	13.4	37.3
1-2 PM	3500	0.0	2999	2998	502	15.31+	805	66.4	13.4	37.3
2-3 PM	3721	0.0	3000	2998	723	15.26+	805	65.5	13.4	37.3
3-4 PM	4220	0.0	OFF	4220	0	2.45	203	62.0	38.7	38.7
4-5 PM	4618	0.0	OFF	4618	0	0.00	0	59.3	59.3	59.3
5-6 PM	4423	0.0	OFF	4423	0	0.00	0	60.6	60.6	60.6
6-7 PM	3231	0.0	OFF	3231	0	0.00	0	66.7	66.7	66.7
7-8 PM	2292	0.0	OFF	2292	0	0.00	0	67.9	67.9	67.9
8-9 PM	1959	0.0	OFF	1959	0	0.00	0	68.3	68.3	68.3
9-10 PM	1586	0.0	OFF	1586	0	0.00	0	68.7	68.7	68.7
10-11 PM	1083	0.0	OFF	1083	0	0.00	0	69.4	69.4	69.4
11PM-MID	723	0.0	OFF	723	0	0.00	0	69.9	69.9	69.9

"OFF" INDICATES NO ROAD WORK (ALL LANES OPEN TO TRAFFIC)

+ INDICATES QUEUEING EXCEEDS USER-SPECIFIED MAXIMUM LIMIT

----- SITE BREAKDOWN DELAYS -----	
BREAKDOWN DURATION (MINS)	0
RANGE OF QUEUE DELAY - MIN (VEH-H) MAX	0.0
AV BREAKDOWNS PER DAY	0.00
AV QUEUE DELAY/DAY (VEH-H)	0.0
AV TOTAL DELAY/DAY (VEH-H)	0.0

----- SITE ACCIDENT DELAYS -----	
BREAKDOWN DURATION (MINS)	0
RANGE OF QUEUE DELAY - MIN (VEH-H) MAX	0
AV BREAKDOWNS PER DAY	0
AV QUEUE DELAY/DAY (VEH-H)	0
AV TOTAL DELAY/DAY (VEH-H)	0

AVERAGE ACCIDENT NUMBERS (PIA/DAY)	
MAIN ROUTE WITHOUT WORKS	0.0436
MAIN ROUTE WITH WORKS	0.0411
'DIVERSION'	0.0034

PIA: Personal Injury Accidents

ECONOMIC IMPACT ON ROAD USERS	
ROAD USER COSTS PER DAY	\$50,124
CONGESTED HOURS PER DAY*	4

*Delays Exceeding User-Specified Maximum

**IH 94: STH 16 TO USH 18 (WAUKESHA COUNTY)
OFF-PEAK DAY CLOSURE
NO DIVERSION ROUTE (MAX QUEUE METHOD)**

AUGUST

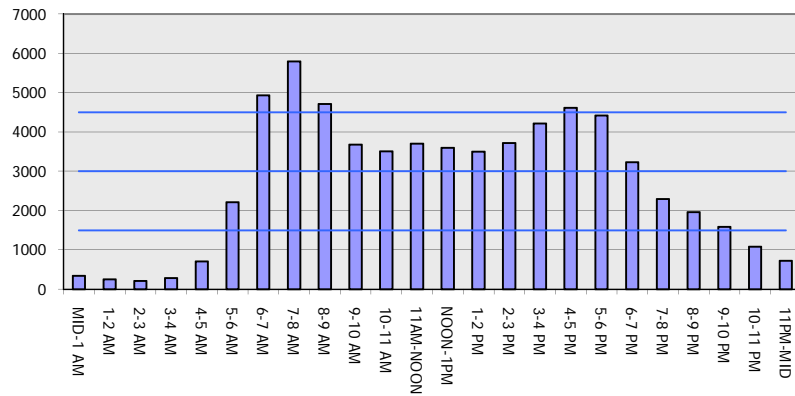
Analyzed for 2009
Construction Season

GRAPHICAL REPRESENTATION OF TRAFFIC MODEL INPUT AND OUTPUT

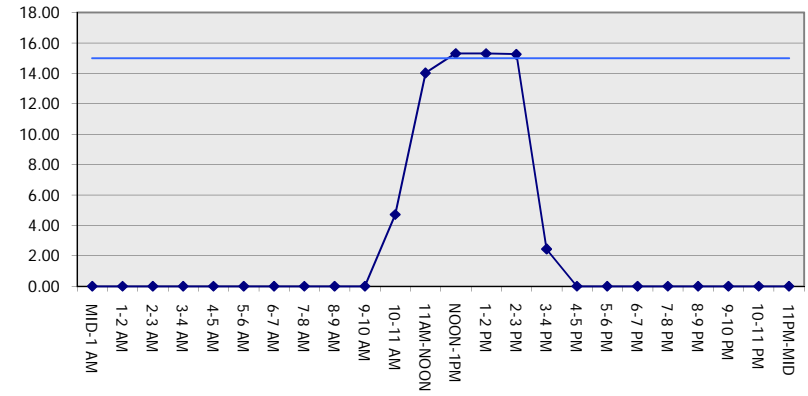
MON-THUR

EASTBOUND DIRECTION

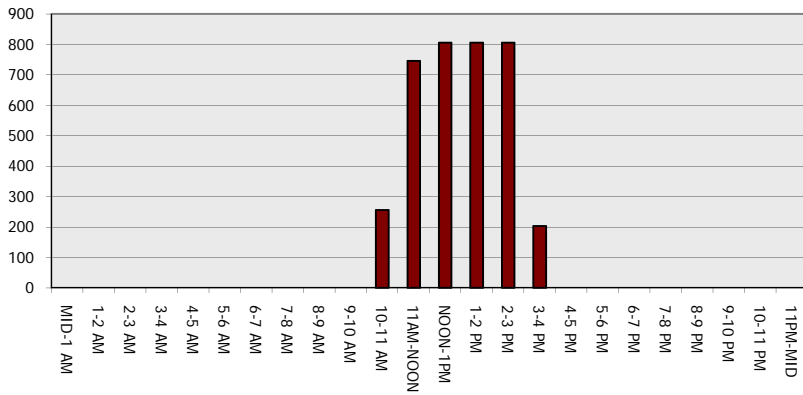
Main Route - Traffic Demand (Vehicles Per Hour)



Main Route Average Delay Per Vehicle (Minutes)



Main Route - Average Queue Length (Vehicles)



Main Route - Average Speed (MPH)

