

IH 94: STH 16 TO USH 18 (WAUKESHA COUNTY) OFF-PEAK DAY CLOSURE NO DIVERSION ROUTE (MAX QUEUE METHOD)	AUGUST
	Analyzed for 2009 Construction Season

SUMMARY OF TRAFFIC MODEL OUTPUT

FRIDAY WESTBOUND DIRECTION

TIME OF DAY	FLOWS AND CAPACITY IN VEH/HR						AVERAGE SPEEDS IN MPH			
	MAIN ROUTE		SITE CAPA CITY	FLOW		AV.DEL PER VEH (MINS)	AVERAGE QUEUE (VEH)	MAIN ROUTE		SITE
	DEMAND FLOW	PCT HEAVY		MAIN ROUTE	'DIVER TED'			WITHOUT WORK ZONE	WITH WORK ZONE	
MID-1 AM	663	0.0	OFF	663	0	0.00	0	69.9	69.9	69.9
1-2 AM	416	0.0	OFF	416	0	0.00	0	70.2	70.2	70.2
2-3 AM	318	0.0	OFF	318	0	0.00	0	70.2	70.2	70.2
3-4 AM	327	0.0	OFF	327	0	0.00	0	70.2	70.2	70.2
4-5 AM	459	0.0	OFF	459	0	0.00	0	70.2	70.2	70.2
5-6 AM	1099	0.0	OFF	1099	0	0.00	0	69.4	69.4	69.4
6-7 AM	2353	0.0	OFF	2353	0	0.00	0	67.8	67.8	67.8
7-8 AM	3249	0.0	OFF	3249	0	0.00	0	66.7	66.7	66.7
8-9 AM	3027	0.0	OFF	3027	0	0.00	0	66.9	66.9	66.9
9-10 AM	2604	0.0	OFF	2604	0	0.00	0	67.5	67.5	67.5
10-11 AM	2777	0.0	2999	2777	0	0.58	0	67.3	58.2	41.0
11AM-NOON	3125	0.0	2999	3125	0	1.40	40	66.8	48.7	37.3
NOON-1PM	3482	0.0	3000	3482	0	6.60	352	66.4	24.2	37.3
1-2 PM	3570	0.0	2999	3254	316	14.61+	770	66.3	13.8	37.3
2-3 PM	3963	0.0	2999	2992	971	15.17+	806	63.8	13.4	37.3
3-4 PM	4423	0.0	OFF	4423	0	2.76	231	60.6	36.5	36.5
4-5 PM	4610	0.0	OFF	4610	0	0.00	0	59.4	59.4	59.4
5-6 PM	4513	0.0	OFF	4513	0	0.00	0	60.1	60.1	60.1
6-7 PM	3658	0.0	OFF	3658	0	0.00	0	65.9	65.9	65.9
7-8 PM	2650	0.0	OFF	2650	0	0.00	0	67.4	67.4	67.4
8-9 PM	2229	0.0	OFF	2229	0	0.00	0	67.9	67.9	67.9
9-10 PM	2261	0.0	OFF	2261	0	0.00	0	67.9	67.9	67.9
10-11 PM	2228	0.0	OFF	2228	0	0.00	0	67.9	67.9	67.9
11PM-MID	1485	0.0	OFF	1485	0	0.00	0	68.9	68.9	68.9

"OFF" INDICATES NO ROAD WORK (ALL LANES OPEN TO TRAFFIC)

+ INDICATES QUEUEING EXCEEDS USER-SPECIFIED MAXIMUM LIMIT

----- SITE BREAKDOWN DELAYS -----	
BREAKDOWN DURATION (MINS)	0
RANGE OF QUEUE DELAY - MIN (VEH-H) MAX	0.0
AV BREAKDOWNS PER DAY	0.00
AV QUEUE DELAY/DAY (VEH-H)	0.0
AV TOTAL DELAY/DAY (VEH-H)	0.0

----- SITE ACCIDENT DELAYS -----	
BREAKDOWN DURATION (MINS)	0
RANGE OF QUEUE DELAY - MIN (VEH-H) MAX	0
AV BREAKDOWNS PER DAY	0
AV QUEUE DELAY/DAY (VEH-H)	0
AV TOTAL DELAY/DAY (VEH-H)	0

AVERAGE ACCIDENT NUMBERS (PIA/DAY)	
MAIN ROUTE WITHOUT WORKS	0.0398
MAIN ROUTE WITH WORKS	0.0379
'DIVERSION'	0.0020
<small>PIA: Personal Injury Accidents</small>	
IMPACTS ON ROAD USERS	
ROAD USER COSTS PER DAY	\$31,710
CONGESTED HOURS PER DAY*	2

*Delays Exceeding User-Specified Maximum

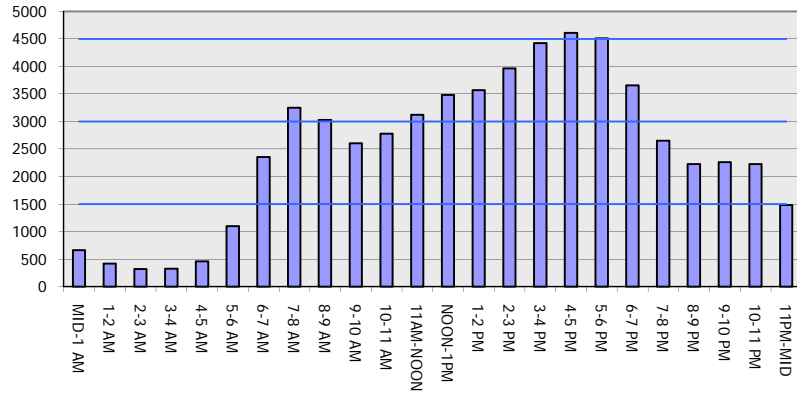
**IH 94: STH 16 TO USH 18 (WAUKESHA COUNTY)
OFF-PEAK DAY CLOSURE
NO DIVERSION ROUTE (MAX QUEUE METHOD)**

AUGUST
Analyzed for 2009
Construction Season

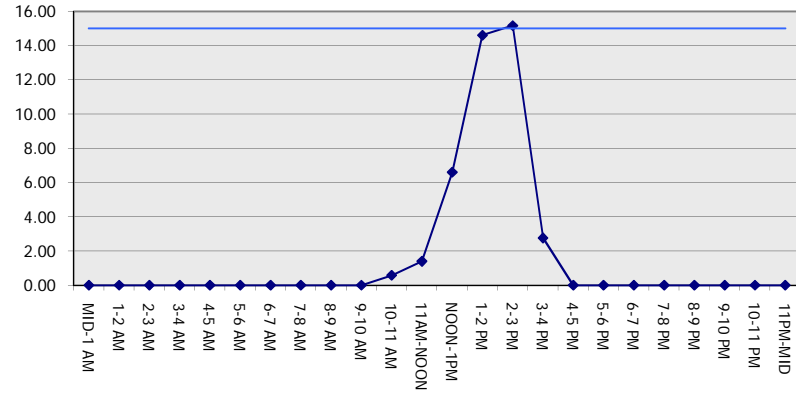
GRAPHICAL REPRESENTATION OF TRAFFIC MODEL INPUT AND OUTPUT

FRIDAY WESTBOUND DIRECTION

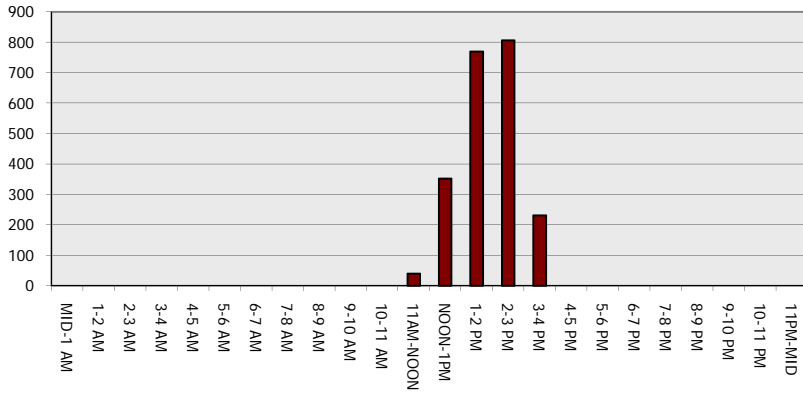
Main Route - Traffic Demand (Vehicles Per Hour)



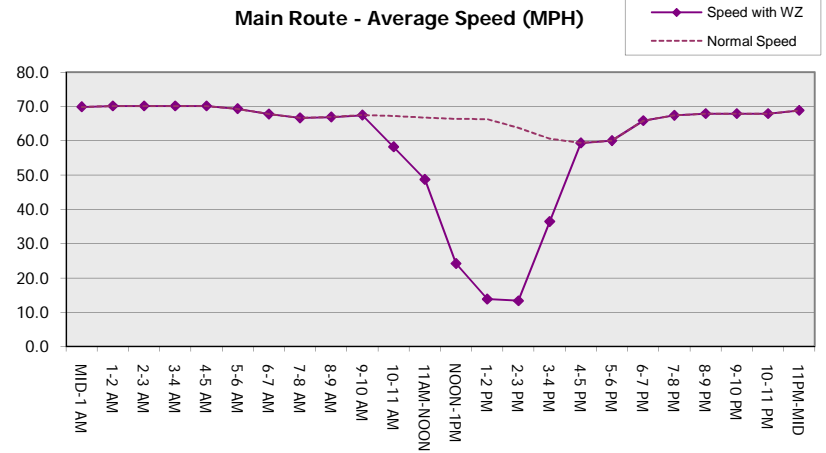
Main Route Average Delay Per Vehicle (Minutes)



Main Route - Average Queue Length (Vehicles)



Main Route - Average Speed (MPH)



IH 94: STH 16 TO USH 18 (WAUKESHA COUNTY) OFF-PEAK DAY CLOSURE NO DIVERSION ROUTE (MAX QUEUE METHOD)	AUGUST
	Analyzed for 2009 Construction Season

SUMMARY OF TRAFFIC MODEL OUTPUT

FRIDAY EASTBOUND DIRECTION

TIME OF DAY	FLOWS AND CAPACITY IN VEH/HR						AVERAGE SPEEDS IN MPH			
	MAIN ROUTE		SITE CAPA CITY	FLOW		AV.DEL PER VEH (MINS)	AVERAGE QUEUE (VEH)	MAIN ROUTE		SITE
	DEMAND FLOW	PCT HEAVY		MAIN ROUTE	'DIVER TED'			WITHOUT WORK ZONE	WITH WORK ZONE	
MID-1 AM	396	0.0	OFF	396	0	0.00	0	70.2	70.2	70.2
1-2 AM	292	0.0	OFF	292	0	0.00	0	70.2	70.2	70.2
2-3 AM	259	0.0	OFF	259	0	0.00	0	70.2	70.2	70.2
3-4 AM	294	0.0	OFF	294	0	0.00	0	70.2	70.2	70.2
4-5 AM	675	0.0	OFF	675	0	0.00	0	69.9	69.9	69.9
5-6 AM	2010	0.0	OFF	2010	0	0.00	0	68.2	68.2	68.2
6-7 AM	4400	0.0	OFF	4400	0	0.00	0	60.8	60.8	60.8
7-8 AM	5481	0.0	OFF	5481	0	0.00	0	53.4	53.4	53.4
8-9 AM	4443	0.0	OFF	4443	0	0.00	0	60.5	60.5	60.5
9-10 AM	3689	0.0	OFF	3689	0	0.00	0	65.6	65.6	65.6
10-11 AM	3682	0.0	2999	3682	0	5.85	336	65.7	26.0	37.3
11AM-NOON	3826	0.0	2999	3069	757	15.09+	799	64.7	13.4	37.3
NOON-1PM	3849	0.0	3000	3006	843	15.21+	806	64.6	13.4	37.3
1-2 PM	3903	0.0	3000	3006	898	15.19+	806	64.2	13.4	37.3
2-3 PM	4163	0.0	3000	3011	1152	15.09+	807	62.4	13.4	37.3
3-4 PM	4782	0.0	OFF	4782	0	2.89	245	58.2	34.9	34.9
4-5 PM	4908	0.0	OFF	4908	0	0.00	0	57.3	57.3	57.3
5-6 PM	4595	0.0	OFF	4595	0	0.00	0	59.5	59.5	59.5
6-7 PM	3797	0.0	OFF	3797	0	0.00	0	64.9	64.9	64.9
7-8 PM	2666	0.0	OFF	2666	0	0.00	0	67.4	67.4	67.4
8-9 PM	2196	0.0	OFF	2196	0	0.00	0	68.0	68.0	68.0
9-10 PM	1888	0.0	OFF	1888	0	0.00	0	68.4	68.4	68.4
10-11 PM	1497	0.0	OFF	1497	0	0.00	0	68.9	68.9	68.9
11PM-MID	1081	0.0	OFF	1081	0	0.00	0	69.4	69.4	69.4

"OFF" INDICATES NO ROAD WORK (ALL LANES OPEN TO TRAFFIC)

+ INDICATES QUEUEING EXCEEDS USER-SPECIFIED MAXIMUM LIMIT

----- SITE BREAKDOWN DELAYS -----	
BREAKDOWN DURATION (MINS)	0
RANGE OF QUEUE DELAY - MIN	0.0
(VEH-H) MAX	0.0
AV BREAKDOWNS PER DAY	0.00
AV QUEUE DELAY/DAY (VEH-H)	0.0
AV TOTAL DELAY/DAY (VEH-H)	0.0

----- SITE ACCIDENT DELAYS -----	
BREAKDOWN DURATION (MINS)	0
RANGE OF QUEUE DELAY - MIN	0
(VEH-H) MAX	0
AV BREAKDOWNS PER DAY	0
AV QUEUE DELAY/DAY (VEH-H)	0
AV TOTAL DELAY/DAY (VEH-H)	0

AVERAGE ACCIDENT NUMBERS (PIA/DAY)	
MAIN ROUTE WITHOUT WORKS	0.0460
MAIN ROUTE WITH WORKS	0.0425
'DIVERSION'	0.0057

PIA: Personal Injury Accidents

ECONOMIC IMPACT ON ROAD USERS	
ROAD USER COSTS PER DAY	\$56,569
CONGESTED HOURS PER DAY*	4

*Delays Exceeding User-Specified Maximum

**IH 94: STH 16 TO USH 18 (WAUKESHA COUNTY)
OFF-PEAK DAY CLOSURE
NO DIVERSION ROUTE (MAX QUEUE METHOD)**

AUGUST
Analyzed for 2009
Construction Season

GRAPHICAL REPRESENTATION OF TRAFFIC MODEL INPUT AND OUTPUT
FRIDAY EASTBOUND DIRECTION

