

IH 94: STH 16 TO USH 18 (WAUKESHA COUNTY) OFF-PEAK DAY CLOSURE NO DIVERSION ROUTE (MAX QUEUE METHOD)	MAY
	Analyzed for 2009 Construction Season

SUMMARY OF TRAFFIC MODEL OUTPUT

SUNDAY WESTBOUND DIRECTION

TIME OF DAY	FLOWS AND CAPACITY IN VEH/HR						AVERAGE SPEEDS IN MPH				
	MAIN ROUTE		SITE CAPA CITY	FLOW		AV.DEL PER VEH (MINS)	AVERAGE QUEUE (VEH)	MAIN ROUTE		SITE	
	DEMAND FLOW	PCT HEAVY		MAIN ROUTE	'DIVER TED'			WITHOUT WORK ZONE	WITH WORK ZONE		
MID-1 AM	776	0.0	OFF	776	0	0.00	0	69.7	69.7	69.7	
1-2 AM	421	0.0	OFF	421	0	0.00	0	70.2	70.2	70.2	
2-3 AM	350	0.0	OFF	350	0	0.00	0	70.2	70.2	70.2	
3-4 AM	207	0.0	OFF	207	0	0.00	0	70.2	70.2	70.2	
4-5 AM	192	0.0	OFF	192	0	0.00	0	70.2	70.2	70.2	
5-6 AM	377	0.0	OFF	377	0	0.00	0	70.2	70.2	70.2	
6-7 AM	627	0.0	OFF	627	0	0.00	0	69.9	69.9	69.9	
7-8 AM	1144	0.0	OFF	1144	0	0.00	0	69.3	69.3	69.3	
8-9 AM	1597	0.0	OFF	1597	0	0.00	0	68.7	68.7	68.7	
9-10 AM	2252	0.0	2999	2252	0	0.34	0	67.9	62.2	49.3	
10-11 AM	2909	0.0	2999	2909	0	0.70	2	67.1	56.5	38.9	
11AM-NOON	3139	0.0	3000	3139	0	1.61	52	66.8	46.8	37.3	
NOON-1PM	3747	0.0	3000	3747	0	8.94+	511	65.3	19.7	37.3	
1-2 PM	3486	0.0	2999	2925	561	15.18+	798	66.4	13.4	37.3	
2-3 PM	3497	0.0	2999	2999	497	15.31+	805	66.4	13.4	37.3	
3-4 PM	3581	0.0	3000	2999	582	15.31+	805	66.3	13.4	37.3	
4-5 PM	4064	0.0	3000	2998	1066	15.12+	806	63.1	13.4	37.3	
5-6 PM	3501	0.0	3000	3000	501	15.31+	805	66.4	13.4	37.3	
6-7 PM	2631	0.0	2999	2631	0	12.71+	671	67.4	15.3	37.3	
7-8 PM	2257	0.0	OFF	2257	0	0.30	26	67.9	62.8	62.8	
8-9 PM	1746	0.0	OFF	1746	0	0.00	0	68.6	68.6	68.6	
9-10 PM	1277	0.0	OFF	1277	0	0.00	0	69.1	69.1	69.1	
10-11 PM	914	0.0	OFF	914	0	0.00	0	69.6	69.6	69.6	
11PM-MID	582	0.0	OFF	582	0	0.00	0	70.0	70.0	70.0	

"OFF" INDICATES NO ROAD WORK (ALL LANES OPEN TO TRAFFIC)

+ INDICATES QUEUEING EXCEEDS USER-SPECIFIED MAXIMUM LIMIT

----- SITE BREAKDOWN DELAYS -----	
BREAKDOWN DURATION (MINS)	0
RANGE OF QUEUE DELAY - MIN	0.0
(VEH-H) MAX	0.0
AV BREAKDOWNS PER DAY	0.00
AV QUEUE DELAY/DAY (VEH-H)	0.0
AV TOTAL DELAY/DAY (VEH-H)	0.0

----- SITE ACCIDENT DELAYS -----	
BREAKDOWN DURATION (MINS)	0
RANGE OF QUEUE DELAY - MIN	0
(VEH-H) MAX	0
AV BREAKDOWNS PER DAY	0
AV QUEUE DELAY/DAY (VEH-H)	0
AV TOTAL DELAY/DAY (VEH-H)	0

AVERAGE ACCIDENT NUMBERS (PIA/DAY)	
MAIN ROUTE WITHOUT WORKS	0.0303
MAIN ROUTE WITH WORKS	0.0262
'DIVERSION'	0.0050
PIA: Personal Injury Accidents	
IMPACTS ON ROAD USERS	
ROAD USER COSTS PER DAY	\$97,207
CONGESTED HOURS PER DAY*	7

*Delays Exceeding User-Specified Maximum

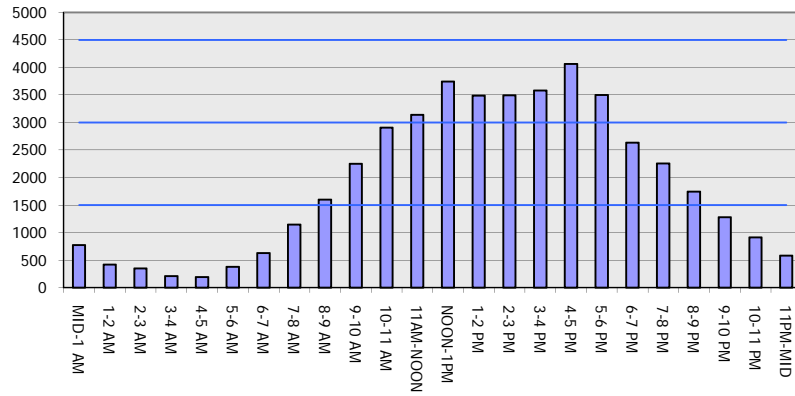
**IH 94: STH 16 TO USH 18 (WAUKESHA COUNTY)
OFF-PEAK DAY CLOSURE
NO DIVERSION ROUTE (MAX QUEUE METHOD)**

MAY
Analyzed for 2009
Construction Season

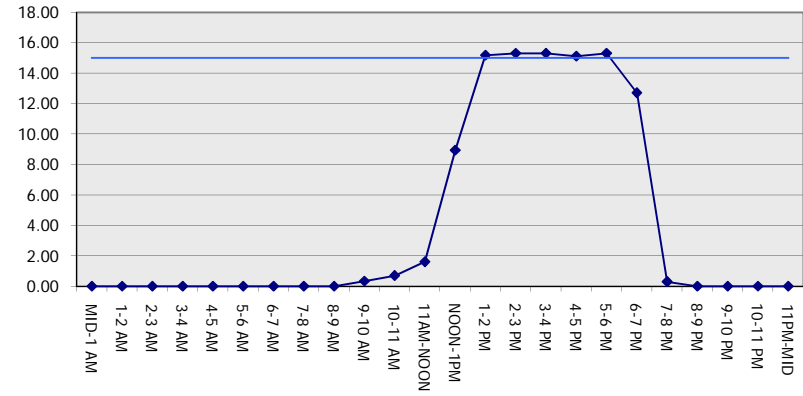
GRAPHICAL REPRESENTATION OF TRAFFIC MODEL INPUT AND OUTPUT

SUNDAY WESTBOUND DIRECTION

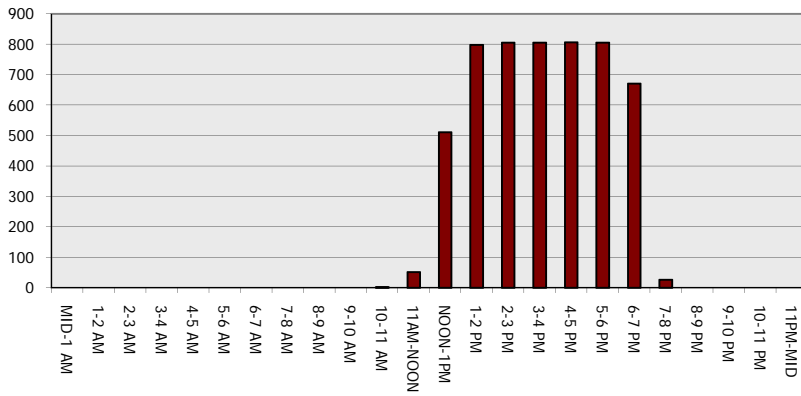
Main Route - Traffic Demand (Vehicles Per Hour)



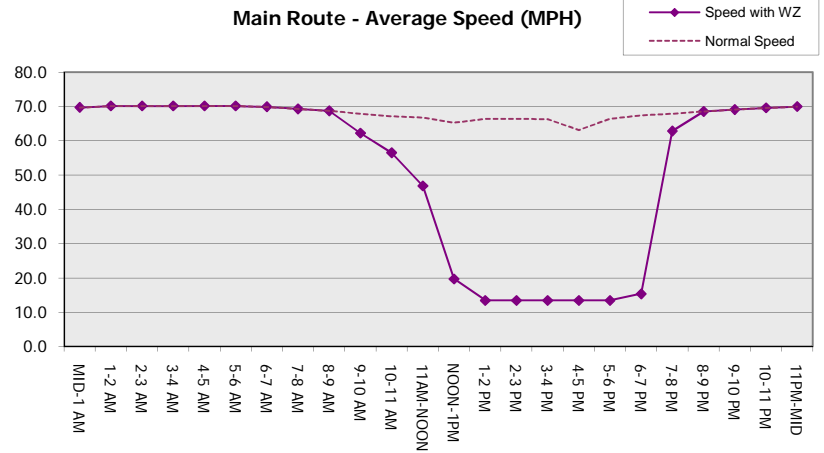
Main Route Average Delay Per Vehicle (Minutes)



Main Route - Average Queue Length (Vehicles)



Main Route - Average Speed (MPH)



IH 94: STH 16 TO USH 18 (WAUKESHA COUNTY) OFF-PEAK DAY CLOSURE NO DIVERSION ROUTE (MAX QUEUE METHOD)	MAY
	Analyzed for 2009 Construction Season

SUMMARY OF TRAFFIC MODEL OUTPUT

SUNDAY EASTBOUND DIRECTION

TIME OF DAY	FLOWS AND CAPACITY IN VEH/HR						AVERAGE SPEEDS IN MPH			
	MAIN ROUTE		SITE CAPA CITY	FLOW		AV.DEL PER VEH (MINS)	AVERAGE QUEUE (VEH)	MAIN ROUTE		SITE
	DEMAND FLOW	PCT HEAVY		MAIN ROUTE	'DIVER TED'			WITHOUT WORK ZONE	WITH WORK ZONE	
MID-1 AM	671	0.0	OFF	671	0	0.00	0	69.9	69.9	69.9
1-2 AM	393	0.0	OFF	393	0	0.00	0	70.2	70.2	70.2
2-3 AM	257	0.0	OFF	257	0	0.00	0	70.2	70.2	70.2
3-4 AM	175	0.0	OFF	175	0	0.00	0	70.2	70.2	70.2
4-5 AM	217	0.0	OFF	217	0	0.00	0	70.2	70.2	70.2
5-6 AM	336	0.0	OFF	336	0	0.00	0	70.2	70.2	70.2
6-7 AM	555	0.0	OFF	555	0	0.00	0	70.0	70.0	70.0
7-8 AM	897	0.0	OFF	897	0	0.00	0	69.6	69.6	69.6
8-9 AM	1438	0.0	OFF	1438	0	0.00	0	68.9	68.9	68.9
9-10 AM	2346	0.0	2999	2346	0	0.40	0	67.8	61.3	47.2
10-11 AM	3384	0.0	2999	3384	0	2.75	137	66.5	38.6	37.3
11AM-NOON	4088	0.0	3000	3488	600	13.25+	719	62.9	14.7	37.3
NOON-1PM	4157	0.0	2999	2986	1170	15.11+	807	62.5	13.4	37.3
1-2 PM	3878	0.0	2999	2995	882	15.20+	806	64.3	13.4	37.3
2-3 PM	3742	0.0	3000	2998	744	15.25+	805	65.3	13.4	37.3
3-4 PM	3692	0.0	2999	2998	694	15.27+	805	65.6	13.4	37.3
4-5 PM	3662	0.0	2999	2998	663	15.28+	805	65.8	13.4	37.3
5-6 PM	3420	0.0	3000	2992	427	15.30+	804	66.5	13.4	37.3
6-7 PM	3089	0.0	2999	2960	129	15.26+	800	66.9	13.4	37.3
7-8 PM	2703	0.0	OFF	2703	0	1.03	97	67.4	52.8	52.8
8-9 PM	2275	0.0	OFF	2275	0	0.00	0	67.9	67.9	67.9
9-10 PM	1719	0.0	OFF	1719	0	0.00	0	68.6	68.6	68.6
10-11 PM	1074	0.0	OFF	1074	0	0.00	0	69.4	69.4	69.4
11PM-MID	660	0.0	OFF	660	0	0.00	0	69.9	69.9	69.9

"OFF" INDICATES NO ROAD WORK (ALL LANES OPEN TO TRAFFIC)

+ INDICATES QUEUEING EXCEEDS USER-SPECIFIED MAXIMUM LIMIT

----- SITE BREAKDOWN DELAYS -----	
BREAKDOWN DURATION (MINS)	0
RANGE OF QUEUE DELAY - MIN (VEH-H) MAX	0.0
AV BREAKDOWNS PER DAY	0.00
AV QUEUE DELAY/DAY (VEH-H)	0.0
AV TOTAL DELAY/DAY (VEH-H)	0.0

----- SITE ACCIDENT DELAYS -----	
BREAKDOWN DURATION (MINS)	0
RANGE OF QUEUE DELAY - MIN (VEH-H) MAX	0
AV BREAKDOWNS PER DAY	0
AV QUEUE DELAY/DAY (VEH-H)	0
AV TOTAL DELAY/DAY (VEH-H)	0

AVERAGE ACCIDENT NUMBERS (PIA/DAY)	
MAIN ROUTE WITHOUT WORKS	0.0326
MAIN ROUTE WITH WORKS	0.0271
'DIVERSION'	0.0082

PIA: Personal Injury Accidents

ECONOMIC IMPACT ON ROAD USERS	
ROAD USER COSTS PER DAY	\$126,500
CONGESTED HOURS PER DAY*	8

*Delays Exceeding User-Specified Maximum

**IH 94: STH 16 TO USH 18 (WAUKESHA COUNTY)
OFF-PEAK DAY CLOSURE
NO DIVERSION ROUTE (MAX QUEUE METHOD)**

MAY
Analyzed for 2009
Construction Season

GRAPHICAL REPRESENTATION OF TRAFFIC MODEL INPUT AND OUTPUT
SUNDAY EASTBOUND DIRECTION

