

IH 94: STH 16 TO USH 18 (WAUKESHA COUNTY) OFF-PEAK DAY CLOSURE NO DIVERSION ROUTE (MAX QUEUE METHOD)	MAY
	Analyzed for 2009 Construction Season

SUMMARY OF TRAFFIC MODEL OUTPUT

SATURDAY WESTBOUND DIRECTION

TIME OF DAY	FLOWS AND CAPACITY IN VEH/HR						AVERAGE SPEEDS IN MPH			
	MAIN ROUTE		SITE CAPA CITY	FLOW		AV.DEL PER VEH (MINS)	AVERAGE QUEUE (VEH)	MAIN ROUTE		SITE
	DEMAND FLOW	PCT HEAVY		MAIN ROUTE	'DIVER TED'			WITHOUT WORK ZONE	WITH WORK ZONE	
MID-1 AM	794	0.0	OFF	794	0	0.00	0	69.7	69.7	69.7
1-2 AM	464	0.0	OFF	464	0	0.00	0	70.2	70.2	70.2
2-3 AM	380	0.0	OFF	380	0	0.00	0	70.2	70.2	70.2
3-4 AM	303	0.0	OFF	303	0	0.00	0	70.2	70.2	70.2
4-5 AM	382	0.0	OFF	382	0	0.00	0	70.2	70.2	70.2
5-6 AM	664	0.0	OFF	664	0	0.00	0	69.9	69.9	69.9
6-7 AM	1303	0.0	OFF	1303	0	0.00	0	69.1	69.1	69.1
7-8 AM	2134	0.0	OFF	2134	0	0.00	0	68.1	68.1	68.1
8-9 AM	2646	0.0	2999	2646	0	0.50	0	67.4	59.6	43.7
9-10 AM	2975	0.0	2999	2975	0	0.83	7	67.1	55.0	38.1
10-11 AM	3358	0.0	3000	3358	0	3.77	188	66.6	33.3	37.3
11AM-NOON	3695	0.0	3000	3345	350	12.47+	672	65.6	15.5	37.3
NOON-1PM	3939	0.0	3000	3011	928	15.19+	806	64.0	13.4	37.3
1-2 PM	3681	0.0	3000	3003	678	15.28+	805	65.7	13.4	37.3
2-3 PM	3640	0.0	3000	3002	638	15.29+	805	66.0	13.4	37.3
3-4 PM	3693	0.0	3000	3002	691	15.27+	805	65.6	13.4	37.3
4-5 PM	3597	0.0	3000	3002	595	15.31+	805	66.3	13.4	37.3
5-6 PM	3208	0.0	3000	3058	150	15.20+	798	66.8	13.4	37.3
6-7 PM	2656	0.0	OFF	2656	0	1.05	98	67.4	52.7	52.7
7-8 PM	2133	0.0	OFF	2133	0	0.00	0	68.1	68.1	68.1
8-9 PM	2106	0.0	OFF	2106	0	0.00	0	68.1	68.1	68.1
9-10 PM	2308	0.0	OFF	2308	0	0.00	0	67.9	67.9	67.9
10-11 PM	1642	0.0	OFF	1642	0	0.00	0	68.7	68.7	68.7
11PM-MID	1122	0.0	OFF	1122	0	0.00	0	69.4	69.4	69.4

"OFF" INDICATES NO ROAD WORK (ALL LANES OPEN TO TRAFFIC)

+ INDICATES QUEUEING EXCEEDS USER-SPECIFIED MAXIMUM LIMIT

----- SITE BREAKDOWN DELAYS -----	
BREAKDOWN DURATION (MINS)	0
RANGE OF QUEUE DELAY - MIN (VEH-H) MAX	0.0
AV BREAKDOWNS PER DAY	0.00
AV QUEUE DELAY/DAY (VEH-H)	0.0
AV TOTAL DELAY/DAY (VEH-H)	0.0

----- SITE ACCIDENT DELAYS -----	
BREAKDOWN DURATION (MINS)	0
RANGE OF QUEUE DELAY - MIN (VEH-H) MAX	0
AV BREAKDOWNS PER DAY	0
AV QUEUE DELAY/DAY (VEH-H)	0
AV TOTAL DELAY/DAY (VEH-H)	0

AVERAGE ACCIDENT NUMBERS (PIA/DAY)	
MAIN ROUTE WITHOUT WORKS	0.0353
MAIN ROUTE WITH WORKS	0.0306
'DIVERSION'	0.0062
PIA: Personal Injury Accidents	
IMPACTS ON ROAD USERS	
ROAD USER COSTS PER DAY	\$107,132
CONGESTED HOURS PER DAY*	7

*Delays Exceeding User-Specified Maximum

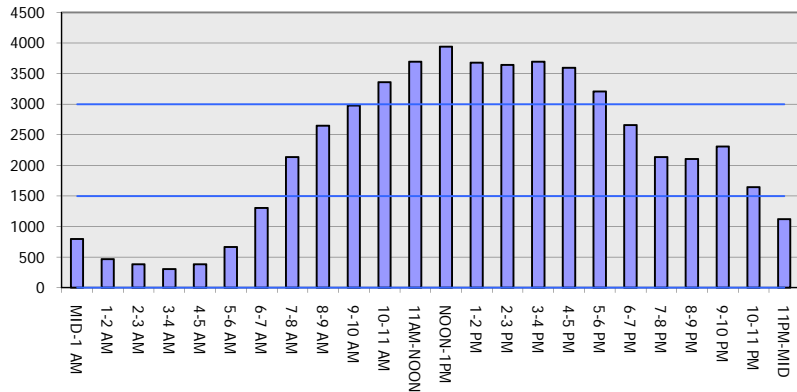
**IH 94: STH 16 TO USH 18 (WAUKESHA COUNTY)
OFF-PEAK DAY CLOSURE
NO DIVERSION ROUTE (MAX QUEUE METHOD)**

MAY
Analyzed for 2009
Construction Season

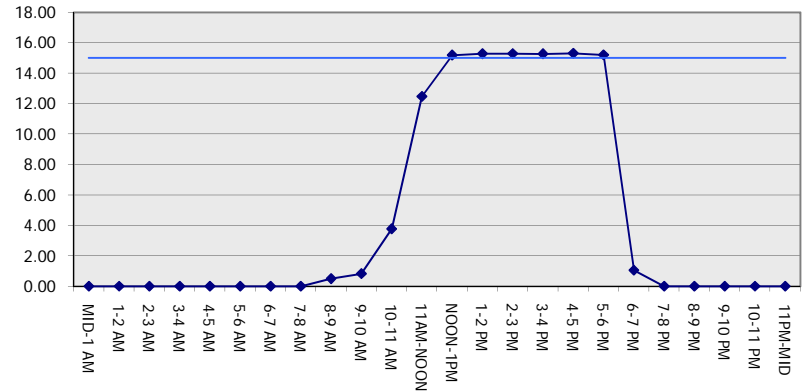
GRAPHICAL REPRESENTATION OF TRAFFIC MODEL INPUT AND OUTPUT

SATURDAY WESTBOUND DIRECTION

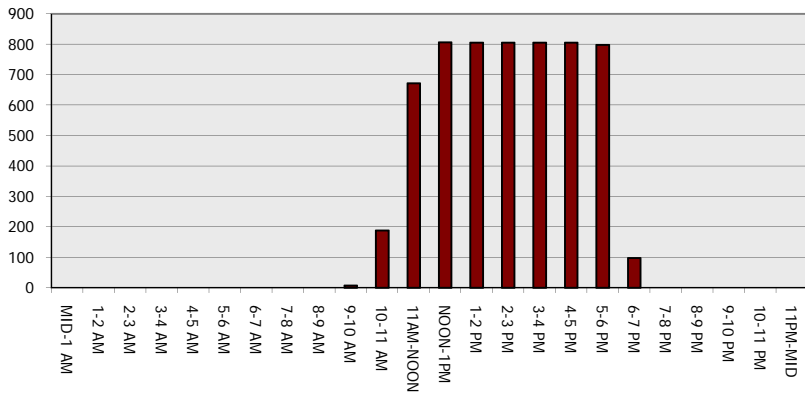
Main Route - Traffic Demand (Vehicles Per Hour)



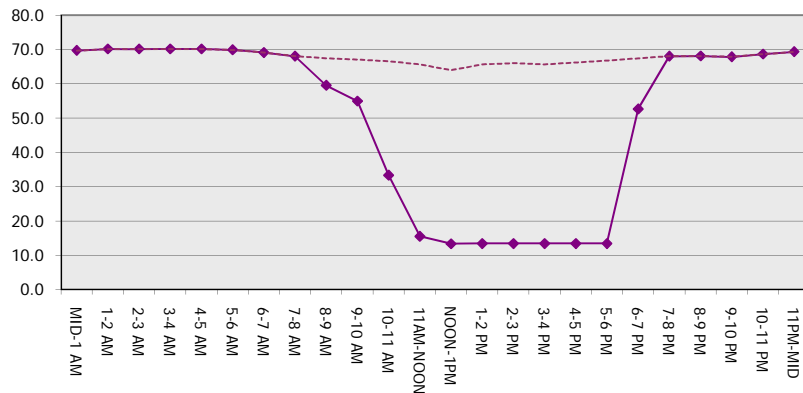
Main Route Average Delay Per Vehicle (Minutes)



Main Route - Average Queue Length (Vehicles)



Main Route - Average Speed (MPH)



IH 94: STH 16 TO USH 18 (WAUKESHA COUNTY) OFF-PEAK DAY CLOSURE NO DIVERSION ROUTE (MAX QUEUE METHOD)	MAY
	Analyzed for 2009 Construction Season

SUMMARY OF TRAFFIC MODEL OUTPUT

SATURDAY EASTBOUND DIRECTION

TIME OF DAY	FLOWS AND CAPACITY IN VEH/HR						AVERAGE SPEEDS IN MPH			
	MAIN ROUTE		SITE CAPA CITY	FLOW		AV.DEL PER VEH (MINS)	AVERAGE QUEUE (VEH)	MAIN ROUTE		SITE
	DEMAND FLOW	PCT HEAVY		MAIN ROUTE	'DIVER TED'			WITHOUT WORK ZONE	WITH WORK ZONE	
MID-1 AM	605	0.0	OFF	605	0	0.00	0	70.0	70.0	70.0
1-2 AM	364	0.0	OFF	364	0	0.00	0	70.2	70.2	70.2
2-3 AM	272	0.0	OFF	272	0	0.00	0	70.2	70.2	70.2
3-4 AM	226	0.0	OFF	226	0	0.00	0	70.2	70.2	70.2
4-5 AM	337	0.0	OFF	337	0	0.00	0	70.2	70.2	70.2
5-6 AM	649	0.0	OFF	649	0	0.00	0	69.9	69.9	69.9
6-7 AM	1056	0.0	OFF	1056	0	0.00	0	69.4	69.4	69.4
7-8 AM	1632	0.0	OFF	1632	0	0.00	0	68.7	68.7	68.7
8-9 AM	2426	0.0	2999	2426	0	0.40	0	67.7	61.2	47.1
9-10 AM	3011	0.0	2999	3011	0	0.95	15	67.0	53.5	38.0
10-11 AM	3300	0.0	3000	3300	0	3.93	191	66.6	32.7	37.3
11AM-NOON	3615	0.0	3000	3467	149	11.75+	633	66.1	16.3	37.3
NOON-1PM	3724	0.0	3000	2999	725	15.26+	805	65.4	13.4	37.3
1-2 PM	3643	0.0	3000	2999	644	15.29+	805	66.0	13.4	37.3
2-3 PM	3801	0.0	3000	2999	801	15.23+	805	64.9	13.4	37.3
3-4 PM	3779	0.0	3000	2999	780	15.23+	805	65.0	13.4	37.3
4-5 PM	3845	0.0	3000	2999	845	15.21+	805	64.6	13.4	37.3
5-6 PM	3469	0.0	3000	2999	470	15.31+	805	66.4	13.4	37.3
6-7 PM	2863	0.0	OFF	2863	0	1.16	107	67.2	51.2	51.2
7-8 PM	2323	0.0	OFF	2323	0	0.00	0	67.9	67.9	67.9
8-9 PM	2056	0.0	OFF	2056	0	0.00	0	68.2	68.2	68.2
9-10 PM	1849	0.0	OFF	1849	0	0.00	0	68.4	68.4	68.4
10-11 PM	1444	0.0	OFF	1444	0	0.00	0	68.9	68.9	68.9
11PM-MID	1092	0.0	OFF	1092	0	0.00	0	69.4	69.4	69.4

"OFF" INDICATES NO ROAD WORK (ALL LANES OPEN TO TRAFFIC)

+ INDICATES QUEUEING EXCEEDS USER-SPECIFIED MAXIMUM LIMIT

----- SITE BREAKDOWN DELAYS -----	
BREAKDOWN DURATION (MINS)	0
RANGE OF QUEUE DELAY - MIN (VEH-H) MAX	0.0
AV BREAKDOWNS PER DAY	0.00
AV QUEUE DELAY/DAY (VEH-H)	0.0
AV TOTAL DELAY/DAY (VEH-H)	0.0

----- SITE ACCIDENT DELAYS -----	
BREAKDOWN DURATION (MINS)	0
RANGE OF QUEUE DELAY - MIN (VEH-H) MAX	0
AV BREAKDOWNS PER DAY	0
AV QUEUE DELAY/DAY (VEH-H)	0
AV TOTAL DELAY/DAY (VEH-H)	0

AVERAGE ACCIDENT NUMBERS (PIA/DAY)	
MAIN ROUTE WITHOUT WORKS	0.0343
MAIN ROUTE WITH WORKS	0.0294
'DIVERSION'	0.0068

PIA: Personal Injury Accidents

ECONOMIC IMPACT ON ROAD USERS	
ROAD USER COSTS PER DAY	\$108,450
CONGESTED HOURS PER DAY*	7

*Delays Exceeding User-Specified Maximum

**IH 94: STH 16 TO USH 18 (WAUKESHA COUNTY)
OFF-PEAK DAY CLOSURE
NO DIVERSION ROUTE (MAX QUEUE METHOD)**

MAY
Analyzed for 2009
Construction Season

GRAPHICAL REPRESENTATION OF TRAFFIC MODEL INPUT AND OUTPUT
SATURDAY EASTBOUND DIRECTION

