

USH 41/45: CTH Q TO STH 145 (WAUKESHA AND MILWAUKEE COUNTIES) OFF-PEAK DAY CLOSURE NO DIVERSION ROUTE (MAX QUEUE METHOD)	OCTOBER
	Analyzed for 2009 Construction Season

SUMMARY OF TRAFFIC MODEL OUTPUT

SUNDAY SOUTHBOUND DIRECTION

TIME OF DAY	FLOWS AND CAPACITY IN VEH/HR						AVERAGE SPEEDS IN MPH				
	MAIN ROUTE		SITE CAPA CITY	FLOW		AV.DEL PER VEH (MINS)	AVERAGE QUEUE (VEH)	MAIN ROUTE		SITE	
	DEMAND FLOW	PCT HEAVY		MAIN ROUTE	'DIVER TED'			WITHOUT WORK ZONE	WITH WORK ZONE		
MID-1 AM	661	0.0	OFF	661	0	0.00	0	69.9	69.9	69.9	
1-2 AM	396	0.0	OFF	396	0	0.00	0	70.2	70.2	70.2	
2-3 AM	299	0.0	OFF	299	0	0.00	0	70.2	70.2	70.2	
3-4 AM	213	0.0	OFF	213	0	0.00	0	70.2	70.2	70.2	
4-5 AM	217	0.0	OFF	217	0	0.00	0	70.2	70.2	70.2	
5-6 AM	374	0.0	OFF	374	0	0.00	0	70.2	70.2	70.2	
6-7 AM	640	0.0	OFF	640	0	0.00	0	69.9	69.9	69.9	
7-8 AM	916	0.0	OFF	916	0	0.00	0	69.6	69.6	69.6	
8-9 AM	1271	0.0	OFF	1271	0	0.00	0	69.2	69.2	69.2	
9-10 AM	2080	0.0	3000	2080	0	0.33	0	68.1	63.0	49.7	
10-11 AM	2676	0.0	2999	2676	0	0.51	0	67.4	59.9	43.2	
11AM-NOON	3255	0.0	2999	3255	0	2.33	100	66.7	42.6	37.3	
NOON-1PM	3540	0.0	3000	3540	0	9.57	516	66.3	20.1	37.3	
1-2 PM	3537	0.0	2999	3000	537	15.20+	799	66.3	14.2	37.3	
2-3 PM	3680	0.0	3000	3000	680	15.16+	800	65.7	14.2	37.3	
3-4 PM	3785	0.0	3000	3000	785	15.12+	800	65.0	14.2	37.3	
4-5 PM	3892	0.0	3000	3000	892	15.07+	800	64.3	14.2	37.3	
5-6 PM	3716	0.0	3000	3000	716	15.15+	800	65.5	14.2	37.3	
6-7 PM	3354	0.0	3000	3000	354	15.22+	800	66.6	14.2	37.3	
7-8 PM	2636	0.0	OFF	2636	0	1.00	94	67.4	54.2	54.2	
8-9 PM	1828	0.0	OFF	1828	0	0.00	0	68.4	68.4	68.4	
9-10 PM	1289	0.0	OFF	1289	0	0.00	0	69.1	69.1	69.1	
10-11 PM	856	0.0	OFF	856	0	0.00	0	69.7	69.7	69.7	
11PM-MID	509	0.0	OFF	509	0	0.00	0	70.1	70.1	70.1	

"OFF" INDICATES NO ROAD WORK (ALL LANES OPEN TO TRAFFIC)

+ INDICATES QUEUEING EXCEEDS USER-SPECIFIED MAXIMUM LIMIT

----- SITE BREAKDOWN DELAYS -----	
BREAKDOWN DURATION (MINS)	0
RANGE OF QUEUE DELAY - MIN (VEH-H) MAX	0.0
AV BREAKDOWNS PER DAY	0.00
AV QUEUE DELAY/DAY (VEH-H)	0.0
AV TOTAL DELAY/DAY (VEH-H)	0.0

----- SITE ACCIDENT DELAYS -----	
BREAKDOWN DURATION (MINS)	0
RANGE OF QUEUE DELAY - MIN (VEH-H) MAX	0
AV BREAKDOWNS PER DAY	0
AV QUEUE DELAY/DAY (VEH-H)	0
AV TOTAL DELAY/DAY (VEH-H)	0

AVERAGE ACCIDENT NUMBERS (PIA/DAY)	
MAIN ROUTE WITHOUT WORKS	0.0334
MAIN ROUTE WITH WORKS	0.0285
'DIVERSION'	0.0067
PIA: Personal Injury Accidents	
IMPACTS ON ROAD USERS	
ROAD USER COSTS PER DAY	\$104,746
CONGESTED HOURS PER DAY*	6

*Delays Exceeding User-Specified Maximum

USH 41/45: CTH Q TO STH 145 (WAUKESHA AND MILWAUKEE COUNTIES)
OFF-PEAK DAY CLOSURE
NO DIVERSION ROUTE (MAX QUEUE METHOD)

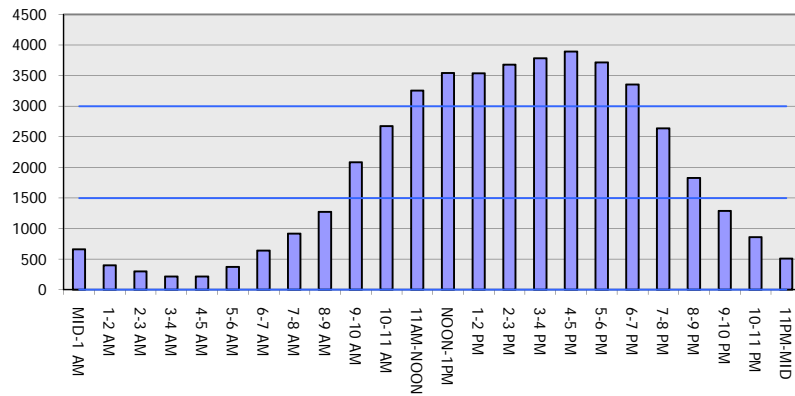
OCTOBER

Analyzed for 2009
 Construction Season

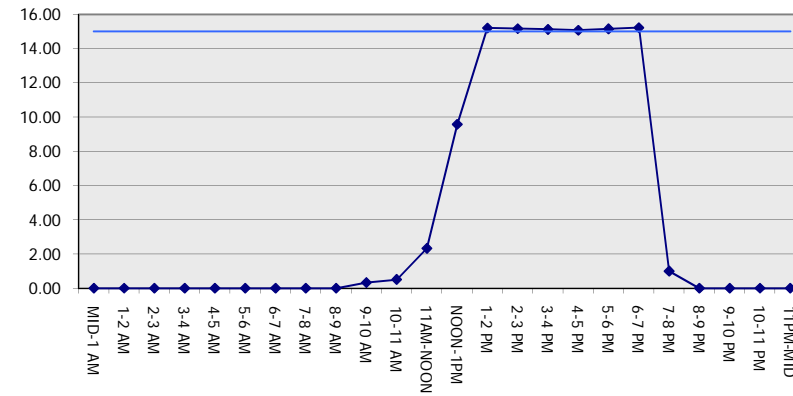
GRAPHICAL REPRESENTATION OF TRAFFIC MODEL INPUT AND OUTPUT

SUNDAY SOUTHBOUND DIRECTION

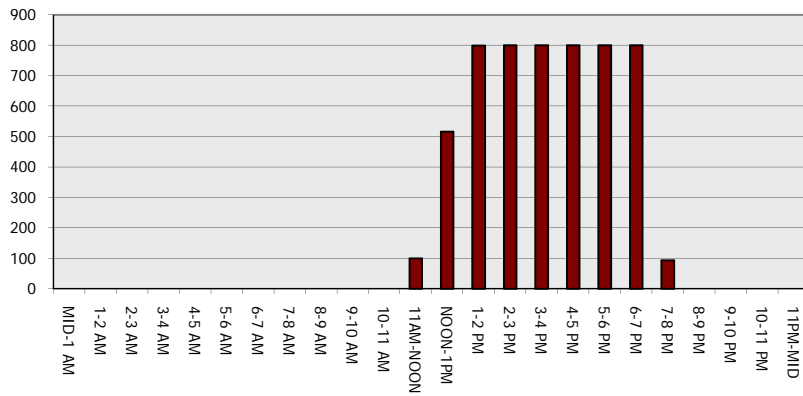
Main Route - Traffic Demand (Vehicles Per Hour)



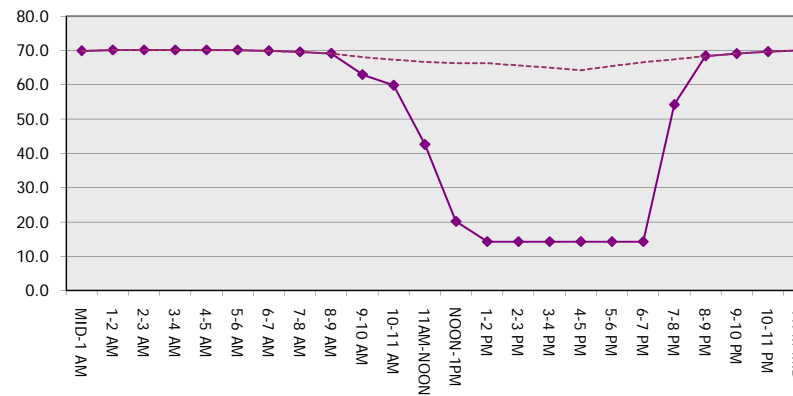
Main Route Average Delay Per Vehicle (Minutes)



Main Route - Average Queue Length (Vehicles)



Main Route - Average Speed (MPH)



USH 41/45: CTH Q TO STH 145 (WAUKESHA AND MILWAUKEE COUNTIES) OFF-PEAK DAY CLOSURE NO DIVERSION ROUTE (MAX QUEUE METHOD)	OCTOBER
	Analyzed for 2009 Construction Season

SUMMARY OF TRAFFIC MODEL OUTPUT

SUNDAY NORTHBOUND DIRECTION

TIME OF DAY	FLOWS AND CAPACITY IN VEH/HR						AVERAGE SPEEDS IN MPH			
	MAIN ROUTE		SITE CAPA CITY	FLOW		AV.DEL PER VEH (MINS)	AVERAGE QUEUE (VEH)	MAIN ROUTE		SITE
	DEMAND FLOW	PCT HEAVY		MAIN ROUTE	'DIVER TED'			WITHOUT WORK ZONE	WITH WORK ZONE	
MID-1 AM	714	0.0	OFF	714	0	0.00	0	69.9	69.9	69.9
1-2 AM	415	0.0	OFF	415	0	0.00	0	70.2	70.2	70.2
2-3 AM	367	0.0	OFF	367	0	0.00	0	70.2	70.2	70.2
3-4 AM	245	0.0	OFF	245	0	0.00	0	70.2	70.2	70.2
4-5 AM	231	0.0	OFF	231	0	0.00	0	70.2	70.2	70.2
5-6 AM	442	0.0	OFF	442	0	0.00	0	70.2	70.2	70.2
6-7 AM	563	0.0	OFF	563	0	0.00	0	70.0	70.0	70.0
7-8 AM	932	0.0	OFF	932	0	0.00	0	69.6	69.6	69.6
8-9 AM	1345	0.0	OFF	1345	0	0.00	0	69.1	69.1	69.1
9-10 AM	1909	0.0	3000	1909	0	0.34	0	68.4	63.1	49.7
10-11 AM	2502	0.0	2999	2502	0	0.41	0	67.6	61.4	46.6
11AM-NOON	3035	0.0	2999	3035	0	0.98	16	66.9	54.0	37.8
NOON-1PM	3286	0.0	3000	3286	0	4.18	203	66.6	33.2	37.3
1-2 PM	3229	0.0	2999	3229	0	9.25	475	66.7	20.6	37.3
2-3 PM	2986	0.0	2999	2986	0	11.17	575	67.0	18.1	37.3
3-4 PM	3203	0.0	3000	3203	0	12.76+	667	66.8	16.3	37.3
4-5 PM	3058	0.0	2999	3020	38	15.12+	793	66.9	14.3	37.3
5-6 PM	2647	0.0	2999	2647	0	12.12+	637	67.4	17.0	37.3
6-7 PM	2313	0.0	2999	2313	0	2.39	160	67.9	42.7	45.1
7-8 PM	1789	0.0	OFF	1789	0	0.00	0	68.5	68.5	68.5
8-9 PM	1285	0.0	OFF	1285	0	0.00	0	69.1	69.1	69.1
9-10 PM	1073	0.0	OFF	1073	0	0.00	0	69.4	69.4	69.4
10-11 PM	904	0.0	OFF	904	0	0.00	0	69.6	69.6	69.6
11PM-MID	548	0.0	OFF	548	0	0.00	0	70.0	70.0	70.0

"OFF" INDICATES NO ROAD WORK (ALL LANES OPEN TO TRAFFIC)

+ INDICATES QUEUEING EXCEEDS USER-SPECIFIED MAXIMUM LIMIT

----- SITE BREAKDOWN DELAYS -----	
BREAKDOWN DURATION (MINS)	0
RANGE OF QUEUE DELAY - MIN (VEH-H) MAX	0.0
AV BREAKDOWNS PER DAY	0.00
AV QUEUE DELAY/DAY (VEH-H)	0.0
AV TOTAL DELAY/DAY (VEH-H)	0.0

----- SITE ACCIDENT DELAYS -----	
BREAKDOWN DURATION (MINS)	0
RANGE OF QUEUE DELAY - MIN (VEH-H) MAX	0
AV BREAKDOWNS PER DAY	0
AV QUEUE DELAY/DAY (VEH-H)	0
AV TOTAL DELAY/DAY (VEH-H)	0

AVERAGE ACCIDENT NUMBERS (PIA/DAY)	
MAIN ROUTE WITHOUT WORKS	0.0286
MAIN ROUTE WITH WORKS	0.0267
'DIVERSION'	0.0001

PIA: Personal Injury Accidents

ECONOMIC IMPACT ON ROAD USERS	
ROAD USER COSTS PER DAY	\$57,034
CONGESTED HOURS PER DAY*	3

*Delays Exceeding User-Specified Maximum

USH 41/45: CTH Q TO STH 145 (WAUKESHA AND MILWAUKEE COUNTIES)
OFF-PEAK DAY CLOSURE
NO DIVERSION ROUTE (MAX QUEUE METHOD)

OCTOBER

Analyzed for 2009
 Construction Season

GRAPHICAL REPRESENTATION OF TRAFFIC MODEL INPUT AND OUTPUT
SUNDAY NORTHBOUND DIRECTION

