

<b>USH 41/45: CTH Q TO STH 145 (WAUKESHA AND MILWAUKEE COUNTIES)</b> <b>OFF-PEAK DAY CLOSURE</b> <b>NO DIVERSION ROUTE (MAX QUEUE METHOD)</b>	<b>OCTOBER</b>
	Analyzed for 2009 Construction Season

**SUMMARY OF TRAFFIC MODEL OUTPUT**

SATURDAY SOUTHBOUND DIRECTION

TIME OF DAY	FLOWS AND CAPACITY IN VEH/HR						AVERAGE SPEEDS IN MPH			
	MAIN ROUTE		SITE CAPA CITY	FLOW		AV.DEL PER VEH (MINS)	AVERAGE QUEUE (VEH)	MAIN ROUTE		SITE
	DEMAND FLOW	PCT HEAVY		MAIN ROUTE	'DIVER TED'			WITHOUT WORK ZONE	WITH WORK ZONE	
MID-1 AM	616	0.0	OFF	616	0	0.00	0	70.0	70.0	70.0
1-2 AM	338	0.0	OFF	338	0	0.00	0	70.2	70.2	70.2
2-3 AM	265	0.0	OFF	265	0	0.00	0	70.2	70.2	70.2
3-4 AM	286	0.0	OFF	286	0	0.00	0	70.2	70.2	70.2
4-5 AM	404	0.0	OFF	404	0	0.00	0	70.2	70.2	70.2
5-6 AM	831	0.0	OFF	831	0	0.00	0	69.7	69.7	69.7
6-7 AM	1289	0.0	OFF	1289	0	0.00	0	69.1	69.1	69.1
7-8 AM	1784	0.0	OFF	1784	0	0.00	0	68.5	68.5	68.5
8-9 AM	2305	0.0	3000	2305	0	0.33	0	67.9	62.8	49.7
9-10 AM	2812	0.0	2999	2812	0	0.60	0	67.3	58.6	40.4
10-11 AM	3164	0.0	2999	3164	0	1.76	62	66.8	46.8	37.3
11AM-NOON	3439	0.0	3000	3439	0	7.08	373	66.4	24.5	37.3
NOON-1PM	3500	0.0	3000	3243	257	14.50+	764	66.4	14.8	37.3
1-2 PM	3354	0.0	2999	2987	367	15.19+	798	66.6	14.3	37.3
2-3 PM	3411	0.0	3000	3000	411	15.21+	800	66.5	14.2	37.3
3-4 PM	3371	0.0	3000	3000	371	15.22+	800	66.6	14.2	37.3
4-5 PM	3448	0.0	3000	3000	448	15.21+	800	66.4	14.2	37.3
5-6 PM	3275	0.0	3000	2980	295	15.18+	797	66.6	14.3	37.3
6-7 PM	2934	0.0	OFF	2934	0	1.20	107	67.1	52.0	52.0
7-8 PM	2291	0.0	OFF	2291	0	0.00	0	67.9	67.9	67.9
8-9 PM	1838	0.0	OFF	1838	0	0.00	0	68.4	68.4	68.4
9-10 PM	1734	0.0	OFF	1734	0	0.00	0	68.6	68.6	68.6
10-11 PM	1311	0.0	OFF	1311	0	0.00	0	69.1	69.1	69.1
11PM-MID	1018	0.0	OFF	1018	0	0.00	0	69.5	69.5	69.5

"OFF" INDICATES NO ROAD WORK (ALL LANES OPEN TO TRAFFIC)

+ INDICATES QUEUEING EXCEEDS USER-SPECIFIED MAXIMUM LIMIT

*----- SITE BREAKDOWN DELAYS -----*	
BREAKDOWN DURATION (MINS)	0
RANGE OF QUEUE DELAY - MIN (VEH-H) MAX	0.0
AV BREAKDOWNS PER DAY	0.00
AV QUEUE DELAY/DAY (VEH-H)	0.0
AV TOTAL DELAY/DAY (VEH-H)	0.0

*----- SITE ACCIDENT DELAYS -----*	
BREAKDOWN DURATION (MINS)	0
RANGE OF QUEUE DELAY - MIN (VEH-H) MAX	0
AV BREAKDOWNS PER DAY	0
AV QUEUE DELAY/DAY (VEH-H)	0
AV TOTAL DELAY/DAY (VEH-H)	0

AVERAGE ACCIDENT NUMBERS (PIA/DAY)	
MAIN ROUTE WITHOUT WORKS	0.0359
MAIN ROUTE WITH WORKS	0.0323
'DIVERSION'	0.0036
PIA: Personal Injury Accidents	
IMPACTS ON ROAD USERS	
ROAD USER COSTS PER DAY	\$92,121
CONGESTED HOURS PER DAY*	6

\*Delays Exceeding User-Specified Maximum

**USH 41/45: CTH Q TO STH 145 (WAUKESHA AND MILWAUKEE COUNTIES)**  
**OFF-PEAK DAY CLOSURE**  
**NO DIVERSION ROUTE (MAX QUEUE METHOD)**

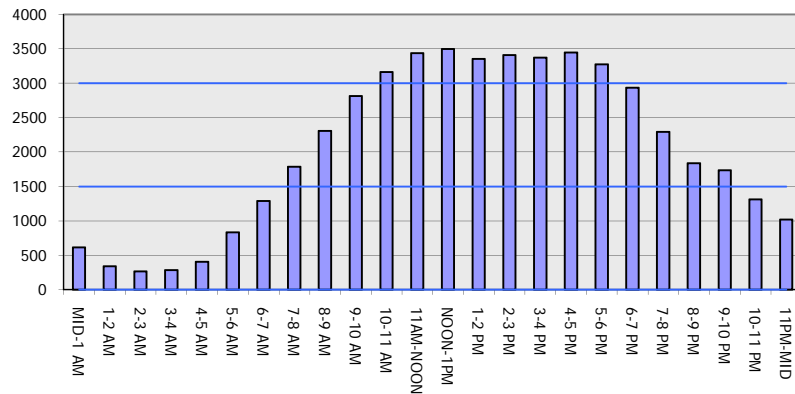
**OCTOBER**

Analyzed for 2009  
 Construction Season

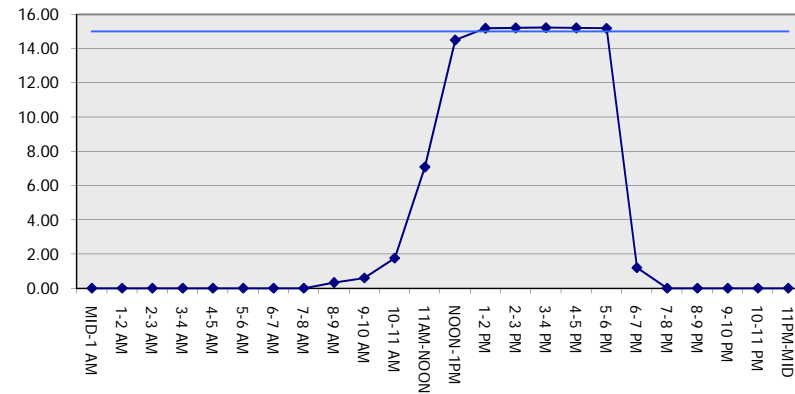
**GRAPHICAL REPRESENTATION OF TRAFFIC MODEL INPUT AND OUTPUT**

**SATURDAY SOUTHBOUND DIRECTION**

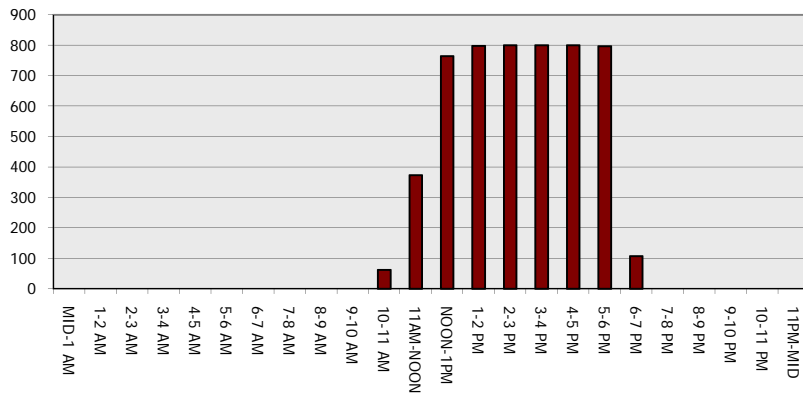
**Main Route - Traffic Demand (Vehicles Per Hour)**



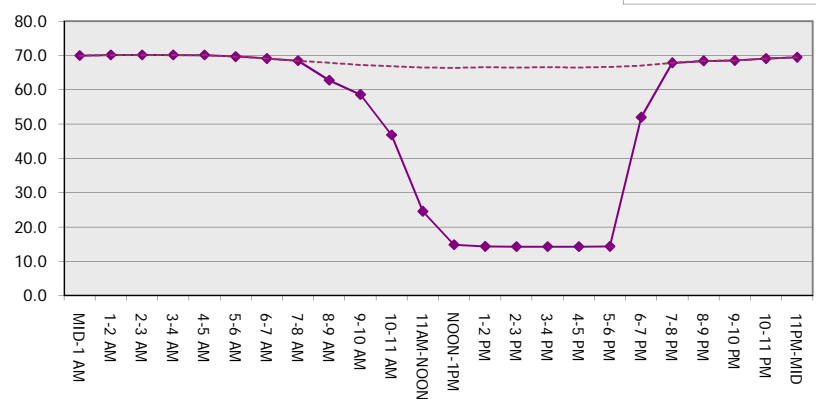
**Main Route Average Delay Per Vehicle (Minutes)**



**Main Route - Average Queue Length (Vehicles)**



**Main Route - Average Speed (MPH)**



<b>USH 41/45: CTH Q TO STH 145 (WAUKESHA AND MILWAUKEE COUNTIES)</b> <b>OFF-PEAK DAY CLOSURE</b> <b>NO DIVERSION ROUTE (MAX QUEUE METHOD)</b>	<b>OCTOBER</b>
	Analyzed for 2009 Construction Season

**SUMMARY OF TRAFFIC MODEL OUTPUT**

**SATURDAY NORTHBOUND DIRECTION**

TIME OF DAY	FLOWS AND CAPACITY IN VEH/HR							AVERAGE SPEEDS IN MPH			
	MAIN ROUTE		SITE CAPA CITY	FLOW		AV.DEL PER VEH (MINS)	AVERAGE QUEUE (VEH)	MAIN ROUTE		SITE	
	DEMAND FLOW	PCT HEAVY		MAIN ROUTE	'DIVER TED'			WITHOUT WORK ZONE	WITH WORK ZONE		
MID-1 AM	702	0.0	OFF	702	0	0.00	0	69.9	69.9	69.9	
1-2 AM	445	0.0	OFF	445	0	0.00	0	70.2	70.2	70.2	
2-3 AM	359	0.0	OFF	359	0	0.00	0	70.2	70.2	70.2	
3-4 AM	298	0.0	OFF	298	0	0.00	0	70.2	70.2	70.2	
4-5 AM	469	0.0	OFF	469	0	0.00	0	70.2	70.2	70.2	
5-6 AM	828	0.0	OFF	828	0	0.00	0	69.7	69.7	69.7	
6-7 AM	1263	0.0	OFF	1263	0	0.00	0	69.2	69.2	69.2	
7-8 AM	1729	0.0	OFF	1729	0	0.00	0	68.6	68.6	68.6	
8-9 AM	2348	0.0	3000	2348	0	0.33	0	67.8	62.7	49.7	
9-10 AM	2822	0.0	2999	2822	0	0.61	0	67.3	58.5	40.2	
10-11 AM	3270	0.0	2999	3270	0	2.53	112	66.7	41.4	37.3	
11AM-NOON	3548	0.0	3000	3548	0	9.85	532	66.3	19.7	37.3	
NOON-1PM	3646	0.0	2999	3000	646	15.18+	799	66.0	14.2	37.3	
1-2 PM	3627	0.0	3000	3000	627	15.19+	800	66.1	14.2	37.3	
2-3 PM	3565	0.0	3000	3000	565	15.20+	800	66.3	14.2	37.3	
3-4 PM	3670	0.0	3000	3000	670	15.17+	800	65.8	14.2	37.3	
4-5 PM	3433	0.0	3000	3000	433	15.21+	800	66.4	14.2	37.3	
5-6 PM	3076	0.0	3000	2959	118	15.15+	795	66.9	14.3	37.3	
6-7 PM	2675	0.0	OFF	2675	0	0.97	90	67.4	54.5	54.5	
7-8 PM	2155	0.0	OFF	2155	0	0.00	0	68.1	68.1	68.1	
8-9 PM	1856	0.0	OFF	1856	0	0.00	0	68.4	68.4	68.4	
9-10 PM	1716	0.0	OFF	1716	0	0.00	0	68.6	68.6	68.6	
10-11 PM	1437	0.0	OFF	1437	0	0.00	0	68.9	68.9	68.9	
11PM-MID	1052	0.0	OFF	1052	0	0.00	0	69.4	69.4	69.4	

"OFF" INDICATES NO ROAD WORK (ALL LANES OPEN TO TRAFFIC)

+ INDICATES QUEUEING EXCEEDS USER-SPECIFIED MAXIMUM LIMIT

*----- SITE BREAKDOWN DELAYS -----*	
BREAKDOWN DURATION (MINS)	0
RANGE OF QUEUE DELAY - MIN (VEH-H) MAX	0.0
AV BREAKDOWNS PER DAY	0.00
AV QUEUE DELAY/DAY (VEH-H)	0.0
AV TOTAL DELAY/DAY (VEH-H)	0.0

*----- SITE ACCIDENT DELAYS -----*	
BREAKDOWN DURATION (MINS)	0
RANGE OF QUEUE DELAY - MIN (VEH-H) MAX	0
AV BREAKDOWNS PER DAY	0
AV QUEUE DELAY/DAY (VEH-H)	0
AV TOTAL DELAY/DAY (VEH-H)	0

AVERAGE ACCIDENT NUMBERS (PIA/DAY)	
MAIN ROUTE WITHOUT WORKS	0.0366
MAIN ROUTE WITH WORKS	0.0324
'DIVERSION'	0.0052

PIA: Personal Injury Accidents

ECONOMIC IMPACT ON ROAD USERS	
ROAD USER COSTS PER DAY	\$98,703
CONGESTED HOURS PER DAY*	6

\*Delays Exceeding User-Specified Maximum

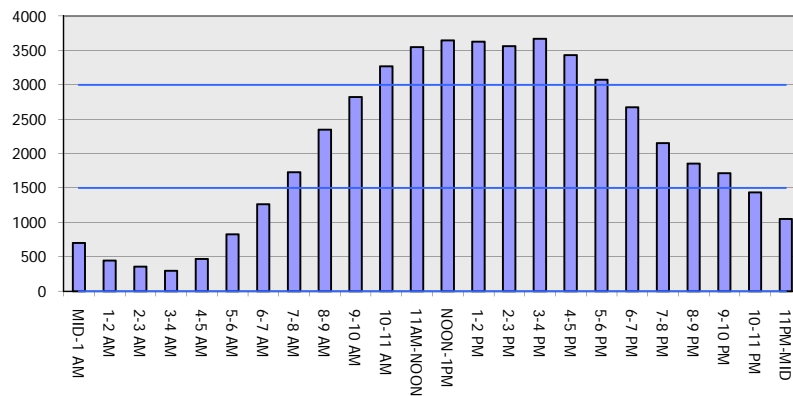
**USH 41/45: CTH Q TO STH 145 (WAUKESHA AND MILWAUKEE COUNTIES)**  
**OFF-PEAK DAY CLOSURE**  
**NO DIVERSION ROUTE (MAX QUEUE METHOD)**

**OCTOBER**

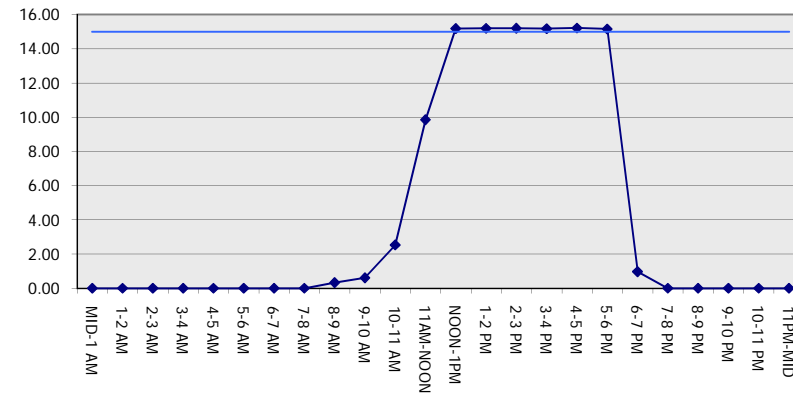
Analyzed for 2009  
 Construction Season

**GRAPHICAL REPRESENTATION OF TRAFFIC MODEL INPUT AND OUTPUT**  
**SATURDAY NORTHBOUND DIRECTION**

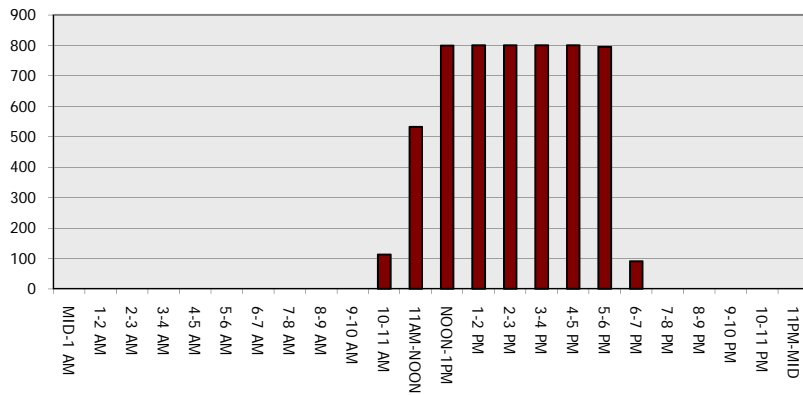
**Main Route - Traffic Demand (Vehicles Per Hour)**



**Main Route Average Delay Per Vehicle (Minutes)**



**Main Route - Average Queue Length (Vehicles)**



**Main Route - Average Speed (MPH)**

