

<b>USH 41/45: CTH Q TO STH 145 (WAUKESHA AND MILWAUKEE COUNTIES)</b> <b>OFF-PEAK DAY 2 LANE CLOSURE</b> <b>NO DIVERSION ROUTE (MAX QUEUE METHOD)</b>	<b>OCTOBER</b>
	Analyzed for 2009 Construction Season

**SUMMARY OF TRAFFIC MODEL OUTPUT**

MON-THUR                  SOUTHBOUND DIRECTION

TIME OF DAY	FLOWS AND CAPACITY IN VEH/HR						AVERAGE SPEEDS IN MPH			
	MAIN ROUTE		SITE CAPA CITY	FLOW		AV.DEL PER VEH (MINS)	AVERAGE QUEUE (VEH)	MAIN ROUTE		SITE
	DEMAND FLOW	PCT HEAVY		MAIN ROUTE	'DIVER TED'			WITHOUT WORK ZONE	WITH WORK ZONE	
MID-1 AM	371	0.0	OFF	371	0	0.00	0	70.2	70.2	70.2
1-2 AM	260	0.0	OFF	260	0	0.00	0	70.2	70.2	70.2
2-3 AM	275	0.0	OFF	275	0	0.00	0	70.2	70.2	70.2
3-4 AM	411	0.0	OFF	411	0	0.00	0	70.2	70.2	70.2
4-5 AM	859	0.0	OFF	859	0	0.00	0	69.7	69.7	69.7
5-6 AM	2985	0.0	OFF	2985	0	0.00	0	67.0	67.0	67.0
6-7 AM	6126	0.0	OFF	6126	0	0.00	0	49.0	49.0	49.0
7-8 AM	6548	0.0	OFF	6548	0	0.00	0	46.1	46.1	46.1
8-9 AM	4403	0.0	OFF	4403	0	0.00	0	60.8	60.8	60.8
9-10 AM	3159	0.0	OFF	3159	0	0.00	0	66.8	66.8	66.8
10-11 AM	2884	0.0	1499	1638	1246	14.48+	367	67.1	14.8	36.0
11AM-NOON	2972	0.0	1499	1854	1118	15.07+	379	67.1	14.3	32.5
NOON-1PM	3113	0.0	1499	1500	1613	16.19+	399	66.9	13.6	31.8
1-2 PM	3162	0.0	1500	1500	1662	16.19+	400	66.8	13.6	31.8
2-3 PM	3658	0.0	1500	1500	2158	16.13+	400	65.9	13.6	31.8
3-4 PM	4007	0.0	OFF	4007	0	0.85	60	63.5	53.1	53.1
4-5 PM	3937	0.0	OFF	3937	0	0.00	0	64.0	64.0	64.0
5-6 PM	3395	0.0	OFF	3395	0	0.00	0	66.5	66.5	66.5
6-7 PM	2625	0.0	OFF	2625	0	0.00	0	67.4	67.4	67.4
7-8 PM	1871	0.0	OFF	1871	0	0.00	0	68.4	68.4	68.4
8-9 PM	1529	0.0	OFF	1529	0	0.00	0	68.8	68.8	68.8
9-10 PM	1340	0.0	OFF	1340	0	0.00	0	69.1	69.1	69.1
10-11 PM	1042	0.0	OFF	1042	0	0.00	0	69.4	69.4	69.4
11PM-MID	771	0.0	OFF	771	0	0.00	0	69.8	69.8	69.8

"OFF" INDICATES NO ROAD WORK (ALL LANES OPEN TO TRAFFIC)

+ INDICATES QUEUEING EXCEEDS USER-SPECIFIED MAXIMUM LIMIT

*----- SITE BREAKDOWN DELAYS -----*	
BREAKDOWN DURATION (MINS)	0
RANGE OF QUEUE DELAY - MIN (VEH-H) MAX	0.0
AV BREAKDOWNS PER DAY	0.00
AV QUEUE DELAY/DAY (VEH-H)	0.0
AV TOTAL DELAY/DAY (VEH-H)	0.0

*----- SITE ACCIDENT DELAYS -----*	
BREAKDOWN DURATION (MINS)	0
RANGE OF QUEUE DELAY - MIN (VEH-H) MAX	0
AV BREAKDOWNS PER DAY	0
AV QUEUE DELAY/DAY (VEH-H)	0
AV TOTAL DELAY/DAY (VEH-H)	0

AVERAGE ACCIDENT NUMBERS (PIA/DAY)	
MAIN ROUTE WITHOUT WORKS	0.0452
MAIN ROUTE WITH WORKS	0.0389
'DIVERSION'	0.0132
PIA: Personal Injury Accidents	
IMPACTS ON ROAD USERS	
ROAD USER COSTS PER DAY	\$46,624
CONGESTED HOURS PER DAY*	5

\*Delays Exceeding User-Specified Maximum

**USH 41/45: CTH Q TO STH 145 (WAUKESHA AND MILWAUKEE COUNTIES)**  
**OFF-PEAK DAY 2 LANE CLOSURE**  
**NO DIVERSION ROUTE (MAX QUEUE METHOD)**

**OCTOBER**

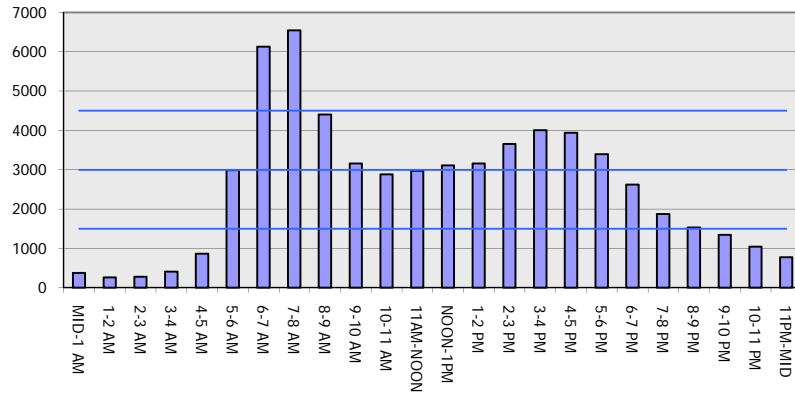
Analyzed for 2009  
 Construction Season

**GRAPHICAL REPRESENTATION OF TRAFFIC MODEL INPUT AND OUTPUT**

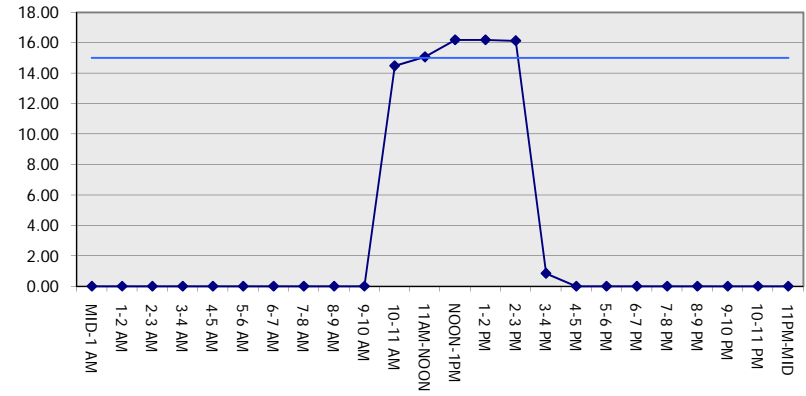
**MON-THUR**

**SOUTHBOUND DIRECTION**

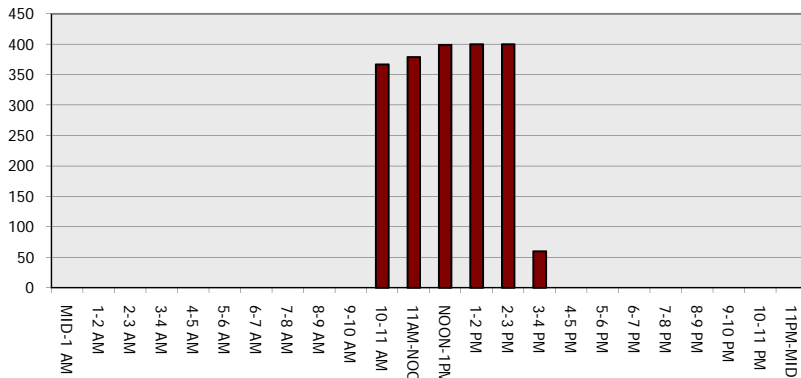
**Main Route - Traffic Demand (Vehicles Per Hour)**



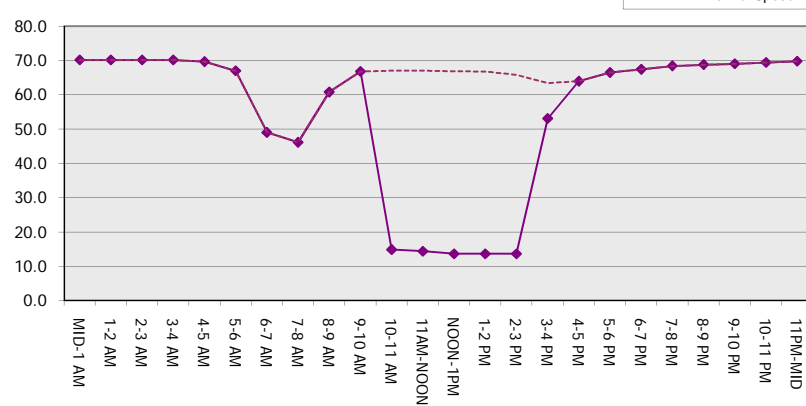
**Main Route Average Delay Per Vehicle (Minutes)**



**Main Route - Average Queue Length (Vehicles)**



**Main Route - Average Speed (MPH)**



<b>USH 41/45: CTH Q TO STH 145 (WAUKESHA AND MILWAUKEE COUNTIES)</b> <b>OFF-PEAK DAY 2 LANE CLOSURE</b> <b>NO DIVERSION ROUTE (MAX QUEUE METHOD)</b>	<b>OCTOBER</b>
	Analyzed for 2009 Construction Season

**SUMMARY OF TRAFFIC MODEL OUTPUT**

MON-THUR                      NORTHBOUND DIRECTION

TIME OF DAY	FLOWS AND CAPACITY IN VEH/HR						AVERAGE SPEEDS IN MPH			
	MAIN ROUTE		SITE CAPA CITY	FLOW		AV.DEL PER VEH (MINS)	AVERAGE QUEUE (VEH)	MAIN ROUTE		SITE
	DEMAND FLOW	PCT HEAVY		MAIN ROUTE	'DIVER TED'			WITHOUT WORK ZONE	WITH WORK ZONE	
MID-1 AM	394	0.0	OFF	394	0	0.00	0	70.2	70.2	70.2
1-2 AM	276	0.0	OFF	276	0	0.00	0	70.2	70.2	70.2
2-3 AM	270	0.0	OFF	270	0	0.00	0	70.2	70.2	70.2
3-4 AM	305	0.0	OFF	305	0	0.00	0	70.2	70.2	70.2
4-5 AM	695	0.0	OFF	695	0	0.00	0	69.9	69.9	69.9
5-6 AM	1795	0.0	OFF	1795	0	0.00	0	68.5	68.5	68.5
6-7 AM	3106	0.0	OFF	3106	0	0.00	0	66.9	66.9	66.9
7-8 AM	3154	0.0	OFF	3154	0	0.00	0	66.8	66.8	66.8
8-9 AM	2827	0.0	OFF	2827	0	0.00	0	67.2	67.2	67.2
9-10 AM	2457	0.0	OFF	2457	0	0.00	0	67.7	67.7	67.7
10-11 AM	2596	0.0	1499	1951	645	13.05+	325	67.5	16.1	32.2
11AM-NOON	2863	0.0	1499	1500	1363	16.28+	399	67.2	13.5	30.8
NOON-1PM	3003	0.0	1500	1500	1503	16.27+	400	67.0	13.5	30.8
1-2 PM	3199	0.0	1500	1500	1699	16.25+	400	66.8	13.5	30.8
2-3 PM	4383	0.0	1500	1500	2883	15.85+	400	60.9	13.5	30.8
3-4 PM	5620	0.0	OFF	5620	0	2.88	261	52.5	33.8	33.8
4-5 PM	6566	0.0	OFF	6566	0	3.08	354	46.0	30.4	30.4
5-6 PM	5969	0.0	OFF	5969	0	6.24	621	50.1	23.5	23.5
6-7 PM	3499	0.0	OFF	3499	0	0.97	73	66.4	53.8	53.8
7-8 PM	2251	0.0	OFF	2251	0	0.00	0	67.9	67.9	67.9
8-9 PM	1851	0.0	OFF	1851	0	0.00	0	68.4	68.4	68.4
9-10 PM	1613	0.0	OFF	1613	0	0.00	0	68.7	68.7	68.7
10-11 PM	1245	0.0	OFF	1245	0	0.00	0	69.2	69.2	69.2
11PM-MID	761	0.0	OFF	761	0	0.00	0	69.8	69.8	69.8

"OFF" INDICATES NO ROAD WORK (ALL LANES OPEN TO TRAFFIC)

+ INDICATES QUEUEING EXCEEDS USER-SPECIFIED MAXIMUM LIMIT

*----- SITE BREAKDOWN DELAYS -----*	
BREAKDOWN DURATION (MINS)	0
RANGE OF QUEUE DELAY - MIN (VEH-H) MAX	0.0
AV BREAKDOWNS PER DAY	0.00
AV QUEUE DELAY/DAY (VEH-H)	0.0
AV TOTAL DELAY/DAY (VEH-H)	0.0

*----- SITE ACCIDENT DELAYS -----*	
BREAKDOWN DURATION (MINS)	0
RANGE OF QUEUE DELAY - MIN (VEH-H) MAX	0
AV BREAKDOWNS PER DAY	0
AV QUEUE DELAY/DAY (VEH-H)	0
AV TOTAL DELAY/DAY (VEH-H)	0

AVERAGE ACCIDENT NUMBERS (PIA/DAY)	
MAIN ROUTE WITHOUT WORKS	0.0444
MAIN ROUTE WITH WORKS	0.0380
'DIVERSION'	0.0137

PIA: Personal Injury Accidents

ECONOMIC IMPACT ON ROAD USERS	
ROAD USER COSTS PER DAY	\$61,008
CONGESTED HOURS PER DAY*	5

\*Delays Exceeding User-Specified Maximum

**USH 41/45: CTH Q TO STH 145 (WAUKESHA AND MILWAUKEE COUNTIES)**  
**OFF-PEAK DAY 2 LANE CLOSURE**  
**NO DIVERSION ROUTE (MAX QUEUE METHOD)**

**OCTOBER**

Analyzed for 2009  
 Construction Season

**GRAPHICAL REPRESENTATION OF TRAFFIC MODEL INPUT AND OUTPUT**  
**MON-THUR NORTHBOUND DIRECTION**

