

USH 41/45: CTH Q TO STH 145 (WAUKESHA AND MILWAUKEE COUNTIES) OFF-PEAK DAY CLOSURE NO DIVERSION ROUTE (MAX QUEUE METHOD)	OCTOBER
	Analyzed for 2009 Construction Season

SUMMARY OF TRAFFIC MODEL OUTPUT

MON-THUR SOUTHBOUND DIRECTION

TIME OF DAY	FLOWS AND CAPACITY IN VEH/HR						AVERAGE SPEEDS IN MPH			
	MAIN ROUTE		SITE CAPA CITY	FLOW		AV.DEL PER VEH (MINS)	AVERAGE QUEUE (VEH)	MAIN ROUTE		SITE
	DEMAND FLOW	PCT HEAVY		MAIN ROUTE	'DIVER TED'			WITHOUT WORK ZONE	WITH WORK ZONE	
MID-1 AM	371	0.0	OFF	371	0	0.00	0	70.2	70.2	70.2
1-2 AM	260	0.0	OFF	260	0	0.00	0	70.2	70.2	70.2
2-3 AM	275	0.0	OFF	275	0	0.00	0	70.2	70.2	70.2
3-4 AM	411	0.0	OFF	411	0	0.00	0	70.2	70.2	70.2
4-5 AM	859	0.0	OFF	859	0	0.00	0	69.7	69.7	69.7
5-6 AM	2985	0.0	OFF	2985	0	0.00	0	67.0	67.0	67.0
6-7 AM	6126	0.0	OFF	6126	0	0.00	0	49.0	49.0	49.0
7-8 AM	6548	0.0	OFF	6548	0	0.00	0	46.1	46.1	46.1
8-9 AM	4403	0.0	OFF	4403	0	0.00	0	60.8	60.8	60.8
9-10 AM	3159	0.0	OFF	3159	0	0.00	0	66.8	66.8	66.8
10-11 AM	2884	0.0	3000	2884	0	0.65	0	67.1	57.9	39.1
11AM-NOON	2972	0.0	2999	2972	0	0.71	0	67.1	57.1	37.7
NOON-1PM	3113	0.0	3000	3113	0	1.60	50	66.9	48.2	37.3
1-2 PM	3162	0.0	2999	3162	0	3.86	177	66.8	34.5	37.3
2-3 PM	3658	0.0	3000	3632	26	10.42+	574	65.9	18.9	37.3
3-4 PM	4007	0.0	OFF	4007	0	2.54	206	63.5	40.1	40.1
4-5 PM	3937	0.0	OFF	3937	0	0.00	0	64.0	64.0	64.0
5-6 PM	3395	0.0	OFF	3395	0	0.00	0	66.5	66.5	66.5
6-7 PM	2625	0.0	OFF	2625	0	0.00	0	67.4	67.4	67.4
7-8 PM	1871	0.0	OFF	1871	0	0.00	0	68.4	68.4	68.4
8-9 PM	1529	0.0	OFF	1529	0	0.00	0	68.8	68.8	68.8
9-10 PM	1340	0.0	OFF	1340	0	0.00	0	69.1	69.1	69.1
10-11 PM	1042	0.0	OFF	1042	0	0.00	0	69.4	69.4	69.4
11PM-MID	771	0.0	OFF	771	0	0.00	0	69.8	69.8	69.8

"OFF" INDICATES NO ROAD WORK (ALL LANES OPEN TO TRAFFIC)

+ INDICATES QUEUEING EXCEEDS USER-SPECIFIED MAXIMUM LIMIT

----- SITE BREAKDOWN DELAYS -----	
BREAKDOWN DURATION (MINS)	0
RANGE OF QUEUE DELAY - MIN (VEH-H) MAX	0.0
AV BREAKDOWNS PER DAY	0.00
AV QUEUE DELAY/DAY (VEH-H)	0.0
AV TOTAL DELAY/DAY (VEH-H)	0.0

----- SITE ACCIDENT DELAYS -----	
BREAKDOWN DURATION (MINS)	0
RANGE OF QUEUE DELAY - MIN (VEH-H) MAX	0
AV BREAKDOWNS PER DAY	0
AV QUEUE DELAY/DAY (VEH-H)	0
AV TOTAL DELAY/DAY (VEH-H)	0

AVERAGE ACCIDENT NUMBERS (PIA/DAY)	
MAIN ROUTE WITHOUT WORKS	0.0452
MAIN ROUTE WITH WORKS	0.0441
'DIVERSION'	0.0000
<small>PIA: Personal Injury Accidents</small>	
IMPACTS ON ROAD USERS	
ROAD USER COSTS PER DAY	\$5,739
CONGESTED HOURS PER DAY*	1

*Delays Exceeding User-Specified Maximum

USH 41/45: CTH Q TO STH 145 (WAUKESHA AND MILWAUKEE COUNTIES)
OFF-PEAK DAY CLOSURE
NO DIVERSION ROUTE (MAX QUEUE METHOD)

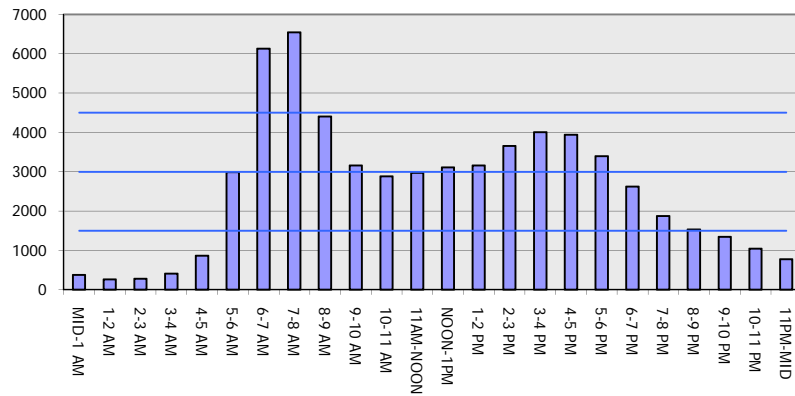
OCTOBER

Analyzed for 2009
 Construction Season

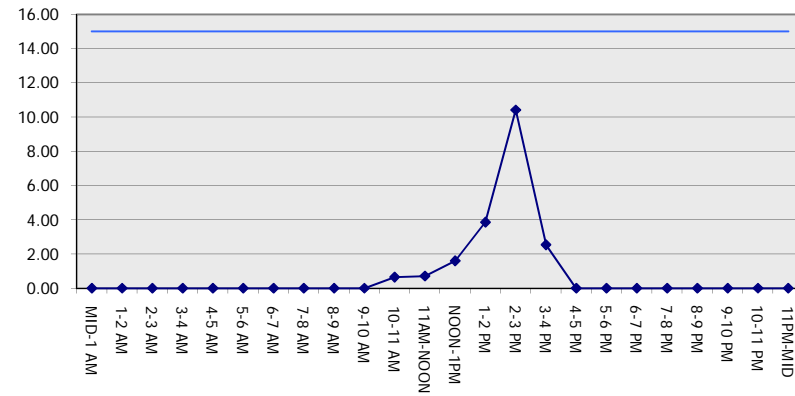
GRAPHICAL REPRESENTATION OF TRAFFIC MODEL INPUT AND OUTPUT

MON-THUR SOUTHBOUND DIRECTION

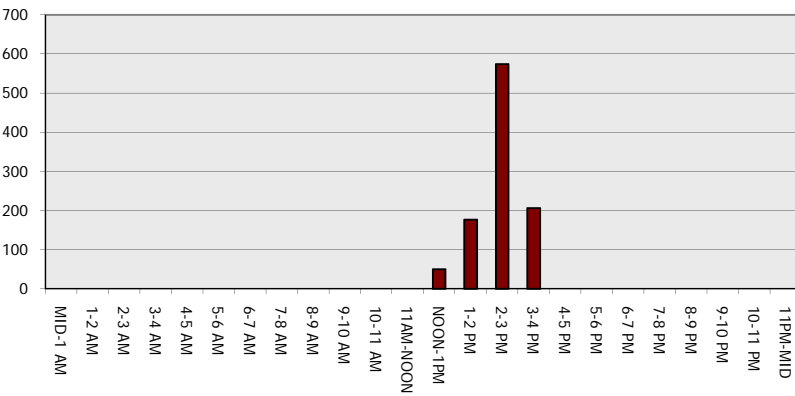
Main Route - Traffic Demand (Vehicles Per Hour)



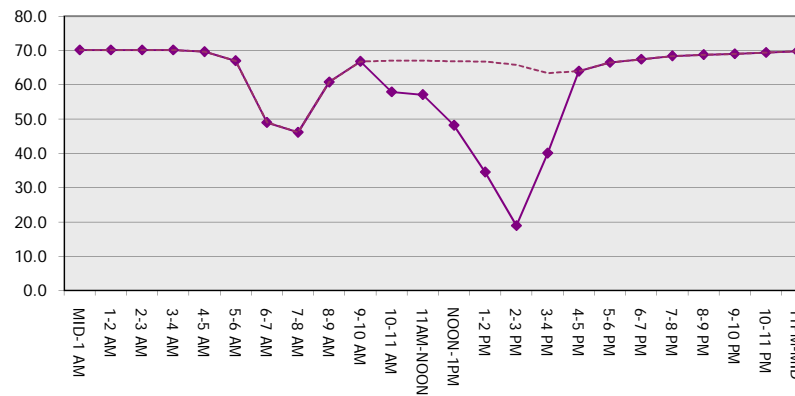
Main Route Average Delay Per Vehicle (Minutes)



Main Route - Average Queue Length (Vehicles)



Main Route - Average Speed (MPH)



USH 41/45: CTH Q TO STH 145 (WAUKESHA AND MILWAUKEE COUNTIES) OFF-PEAK DAY CLOSURE NO DIVERSION ROUTE (MAX QUEUE METHOD)	OCTOBER
	Analyzed for 2009 Construction Season

SUMMARY OF TRAFFIC MODEL OUTPUT

MON-THUR NORTHBOUND DIRECTION

TIME OF DAY	FLOWS AND CAPACITY IN VEH/HR						AVERAGE SPEEDS IN MPH			
	MAIN ROUTE		SITE CAPA CITY	FLOW		AV.DEL PER VEH (MINS)	AVERAGE QUEUE (VEH)	MAIN ROUTE		SITE
	DEMAND FLOW	PCT HEAVY		MAIN ROUTE	'DIVER TED'			WITHOUT WORK ZONE	WITH WORK ZONE	
MID-1 AM	394	0.0	OFF	394	0	0.00	0	70.2	70.2	70.2
1-2 AM	276	0.0	OFF	276	0	0.00	0	70.2	70.2	70.2
2-3 AM	270	0.0	OFF	270	0	0.00	0	70.2	70.2	70.2
3-4 AM	305	0.0	OFF	305	0	0.00	0	70.2	70.2	70.2
4-5 AM	695	0.0	OFF	695	0	0.00	0	69.9	69.9	69.9
5-6 AM	1795	0.0	OFF	1795	0	0.00	0	68.5	68.5	68.5
6-7 AM	3106	0.0	OFF	3106	0	0.00	0	66.9	66.9	66.9
7-8 AM	3154	0.0	OFF	3154	0	0.00	0	66.8	66.8	66.8
8-9 AM	2827	0.0	OFF	2827	0	0.00	0	67.2	67.2	67.2
9-10 AM	2457	0.0	OFF	2457	0	0.00	0	67.7	67.7	67.7
10-11 AM	2596	0.0	3000	2596	0	0.46	0	67.5	60.6	44.6
11AM-NOON	2863	0.0	2999	2863	0	0.64	0	67.2	58.1	39.5
NOON-1PM	3003	0.0	2999	3003	0	0.81	5	67.0	56.0	37.6
1-2 PM	3199	0.0	2999	3199	0	2.01	78	66.8	44.9	37.3
2-3 PM	4383	0.0	3000	3540	843	11.40+	645	60.9	17.3	37.3
3-4 PM	5620	0.0	OFF	5620	0	5.99	571	52.5	24.5	24.5
4-5 PM	6566	0.0	OFF	6566	0	6.19	665	46.0	22.6	22.6
5-6 PM	5969	0.0	OFF	5969	0	9.35	932	50.1	18.6	18.6
6-7 PM	3499	0.0	OFF	3499	0	2.07	168	66.4	44.3	44.3
7-8 PM	2251	0.0	OFF	2251	0	0.00	0	67.9	67.9	67.9
8-9 PM	1851	0.0	OFF	1851	0	0.00	0	68.4	68.4	68.4
9-10 PM	1613	0.0	OFF	1613	0	0.00	0	68.7	68.7	68.7
10-11 PM	1245	0.0	OFF	1245	0	0.00	0	69.2	69.2	69.2
11PM-MID	761	0.0	OFF	761	0	0.00	0	69.8	69.8	69.8

"OFF" INDICATES NO ROAD WORK (ALL LANES OPEN TO TRAFFIC)

+ INDICATES QUEUEING EXCEEDS USER-SPECIFIED MAXIMUM LIMIT

----- SITE BREAKDOWN DELAYS -----	
BREAKDOWN DURATION (MINS)	0
RANGE OF QUEUE DELAY - MIN (VEH-H) MAX	0.0
AV BREAKDOWNS PER DAY	0.00
AV QUEUE DELAY/DAY (VEH-H)	0.0
AV TOTAL DELAY/DAY (VEH-H)	0.0

----- SITE ACCIDENT DELAYS -----	
BREAKDOWN DURATION (MINS)	0
RANGE OF QUEUE DELAY - MIN (VEH-H) MAX	0
AV BREAKDOWNS PER DAY	0
AV QUEUE DELAY/DAY (VEH-H)	0
AV TOTAL DELAY/DAY (VEH-H)	0

AVERAGE ACCIDENT NUMBERS (PIA/DAY)	
MAIN ROUTE WITHOUT WORKS	0.0444
MAIN ROUTE WITH WORKS	0.0428
'DIVERSION'	0.0014

PIA: Personal Injury Accidents

ECONOMIC IMPACT ON ROAD USERS	
ROAD USER COSTS PER DAY	\$16,459
CONGESTED HOURS PER DAY*	1

*Delays Exceeding User-Specified Maximum

USH 41/45: CTH Q TO STH 145 (WAUKESHA AND MILWAUKEE COUNTIES)
OFF-PEAK DAY CLOSURE
NO DIVERSION ROUTE (MAX QUEUE METHOD)

OCTOBER

Analyzed for 2009
 Construction Season

GRAPHICAL REPRESENTATION OF TRAFFIC MODEL INPUT AND OUTPUT
MON-THUR NORTHBOUND DIRECTION

