

USH 41/45: CTH Q TO STH 145 (WAUKESHA AND MILWAUKEE COUNTIES) OFF-PEAK DAY CLOSURE NO DIVERSION ROUTE (MAX QUEUE METHOD)	OCTOBER
	Analyzed for 2009 Construction Season

SUMMARY OF TRAFFIC MODEL OUTPUT

FRIDAY SOUTHBOUND DIRECTION

TIME OF DAY	FLOWS AND CAPACITY IN VEH/HR						AVERAGE SPEEDS IN MPH			
	MAIN ROUTE		SITE CAPA CITY	FLOW		AV.DEL PER VEH (MINS)	AVERAGE QUEUE (VEH)	MAIN ROUTE		SITE
	DEMAND FLOW	PCT HEAVY		MAIN ROUTE	'DIVER TED'			WITHOUT WORK ZONE	WITH WORK ZONE	
MID-1 AM	431	0.0	OFF	431	0	0.00	0	70.2	70.2	70.2
1-2 AM	281	0.0	OFF	281	0	0.00	0	70.2	70.2	70.2
2-3 AM	307	0.0	OFF	307	0	0.00	0	70.2	70.2	70.2
3-4 AM	419	0.0	OFF	419	0	0.00	0	70.2	70.2	70.2
4-5 AM	818	0.0	OFF	818	0	0.00	0	69.7	69.7	69.7
5-6 AM	2735	0.0	OFF	2735	0	0.00	0	67.3	67.3	67.3
6-7 AM	5613	0.0	OFF	5613	0	0.00	0	52.5	52.5	52.5
7-8 AM	6113	0.0	OFF	6113	0	0.00	0	49.1	49.1	49.1
8-9 AM	4053	0.0	OFF	4053	0	0.00	0	63.2	63.2	63.2
9-10 AM	3216	0.0	OFF	3216	0	0.00	0	66.8	66.8	66.8
10-11 AM	3174	0.0	2999	3174	0	2.17	85	66.8	43.8	37.3
11AM-NOON	3268	0.0	3000	3268	0	5.93	296	66.7	27.4	37.3
NOON-1PM	3544	0.0	3000	3327	217	12.69+	675	66.3	16.4	37.3
1-2 PM	3554	0.0	2999	3000	554	15.20+	799	66.3	14.2	37.3
2-3 PM	3990	0.0	3000	3000	990	15.03+	800	63.6	14.2	37.3
3-4 PM	4179	0.0	OFF	4179	0	2.03	162	62.3	42.7	42.7
4-5 PM	4181	0.0	OFF	4181	0	0.00	0	62.3	62.3	62.3
5-6 PM	3858	0.0	OFF	3858	0	0.00	0	64.5	64.5	64.5
6-7 PM	3307	0.0	OFF	3307	0	0.00	0	66.6	66.6	66.6
7-8 PM	2340	0.0	OFF	2340	0	0.00	0	67.8	67.8	67.8
8-9 PM	1801	0.0	OFF	1801	0	0.00	0	68.5	68.5	68.5
9-10 PM	1750	0.0	OFF	1750	0	0.00	0	68.6	68.6	68.6
10-11 PM	1421	0.0	OFF	1421	0	0.00	0	69.0	69.0	69.0
11PM-MID	1133	0.0	OFF	1133	0	0.00	0	69.3	69.3	69.3

"OFF" INDICATES NO ROAD WORK (ALL LANES OPEN TO TRAFFIC)

+ INDICATES QUEUEING EXCEEDS USER-SPECIFIED MAXIMUM LIMIT

----- SITE BREAKDOWN DELAYS -----	
BREAKDOWN DURATION (MINS)	0
RANGE OF QUEUE DELAY - MIN (VEH-H) MAX	0.0
AV BREAKDOWNS PER DAY	0.00
AV QUEUE DELAY/DAY (VEH-H)	0.0
AV TOTAL DELAY/DAY (VEH-H)	0.0

----- SITE ACCIDENT DELAYS -----	
BREAKDOWN DURATION (MINS)	0
RANGE OF QUEUE DELAY - MIN (VEH-H) MAX	0
AV BREAKDOWNS PER DAY	0
AV QUEUE DELAY/DAY (VEH-H)	0
AV TOTAL DELAY/DAY (VEH-H)	0

AVERAGE ACCIDENT NUMBERS (PIA/DAY)	
MAIN ROUTE WITHOUT WORKS	0.0479
MAIN ROUTE WITH WORKS	0.0456
'DIVERSION'	0.0030
<small>PIA: Personal Injury Accidents</small>	
IMPACTS ON ROAD USERS	
ROAD USER COSTS PER DAY	\$20,748
CONGESTED HOURS PER DAY*	3

*Delays Exceeding User-Specified Maximum

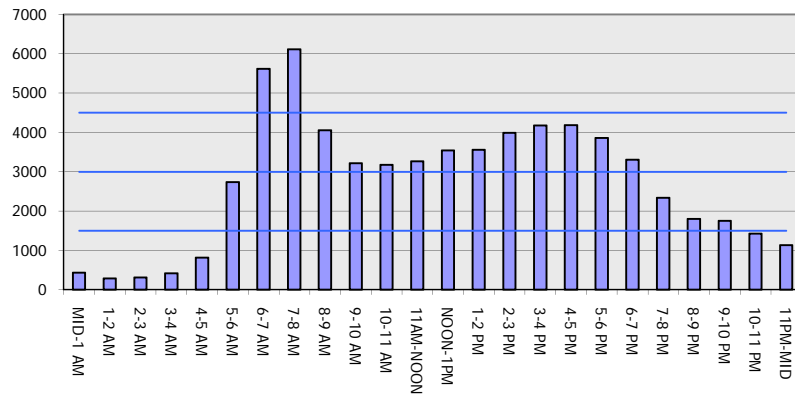
USH 41/45: CTH Q TO STH 145 (WAUKESHA AND MILWAUKEE COUNTIES)
OFF-PEAK DAY CLOSURE
NO DIVERSION ROUTE (MAX QUEUE METHOD)

OCTOBER

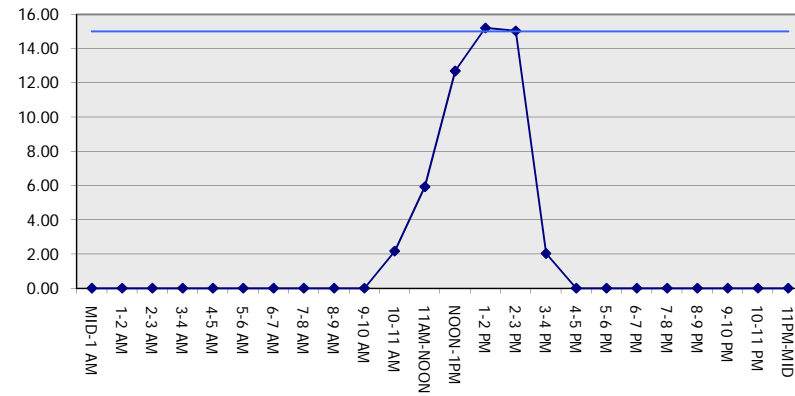
Analyzed for 2009
 Construction Season

GRAPHICAL REPRESENTATION OF TRAFFIC MODEL INPUT AND OUTPUT
FRIDAY SOUTHBOUND DIRECTION

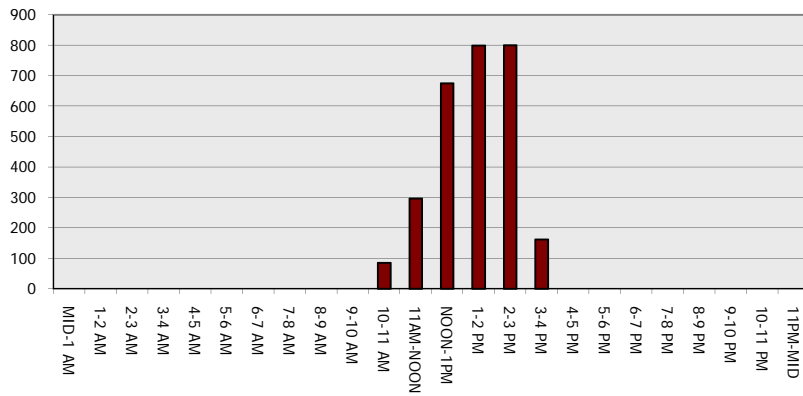
Main Route - Traffic Demand (Vehicles Per Hour)



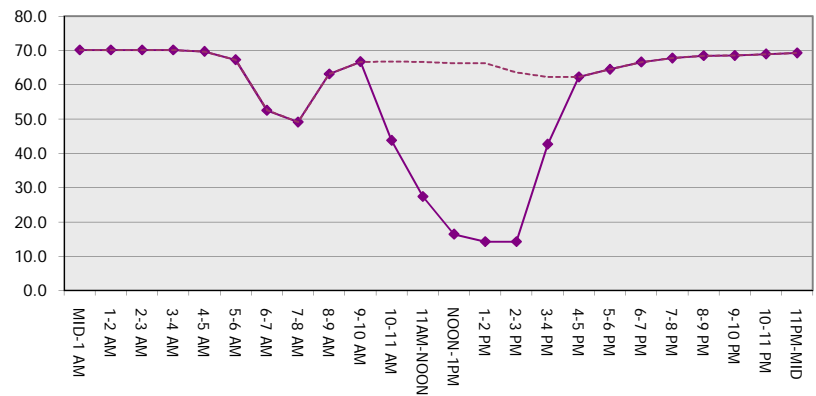
Main Route Average Delay Per Vehicle (Minutes)



Main Route - Average Queue Length (Vehicles)



Main Route - Average Speed (MPH)



USH 41/45: CTH Q TO STH 145 (WAUKESHA AND MILWAUKEE COUNTIES) OFF-PEAK DAY CLOSURE NO DIVERSION ROUTE (MAX QUEUE METHOD)	OCTOBER
	Analyzed for 2009 Construction Season

SUMMARY OF TRAFFIC MODEL OUTPUT

FRIDAY NORTHBOUND DIRECTION

TIME OF DAY	FLOWS AND CAPACITY IN VEH/HR						AVERAGE SPEEDS IN MPH			
	MAIN ROUTE		SITE CAPA CITY	FLOW		AV.DEL PER VEH (MINS)	AVERAGE QUEUE (VEH)	MAIN ROUTE		SITE
	DEMAND FLOW	PCT HEAVY		MAIN ROUTE	'DIVER TED'			WITHOUT WORK ZONE	WITH WORK ZONE	
MID-1 AM	519	0.0	OFF	519	0	0.00	0	70.1	70.1	70.1
1-2 AM	362	0.0	OFF	362	0	0.00	0	70.2	70.2	70.2
2-3 AM	345	0.0	OFF	345	0	0.00	0	70.2	70.2	70.2
3-4 AM	369	0.0	OFF	369	0	0.00	0	70.2	70.2	70.2
4-5 AM	724	0.0	OFF	724	0	0.00	0	69.9	69.9	69.9
5-6 AM	1729	0.0	OFF	1729	0	0.00	0	68.6	68.6	68.6
6-7 AM	2941	0.0	OFF	2941	0	0.00	0	67.1	67.1	67.1
7-8 AM	3181	0.0	OFF	3181	0	0.00	0	66.8	66.8	66.8
8-9 AM	2872	0.0	OFF	2872	0	0.00	0	67.2	67.2	67.2
9-10 AM	2809	0.0	OFF	2809	0	0.00	0	67.3	67.3	67.3
10-11 AM	3172	0.0	2999	3172	0	1.69	59	66.8	47.4	37.3
11AM-NOON	3665	0.0	3000	3665	0	8.57	478	65.8	21.6	37.3
NOON-1PM	3989	0.0	2999	3000	989	15.03+	799	63.6	14.2	37.3
1-2 PM	4238	0.0	3000	3000	1238	14.91+	800	61.9	14.2	37.3
2-3 PM	5172	0.0	3000	3000	2172	14.39+	800	55.5	14.2	37.3
3-4 PM	6397	0.0	OFF	6397	0	10.03	1034	47.1	17.4	17.4
4-5 PM	7251	0.0	OFF	7251	0	17.44	1858	41.3	11.4	11.4
5-6 PM	6002	0.0	OFF	6002	0	24.85	2484	49.9	9.1	9.1
6-7 PM	4275	0.0	OFF	4275	0	17.29	1623	61.7	12.7	12.7
7-8 PM	2744	0.0	OFF	2744	0	0.95	88	67.3	54.7	54.7
8-9 PM	2202	0.0	OFF	2202	0	0.00	0	68.0	68.0	68.0
9-10 PM	2192	0.0	OFF	2192	0	0.00	0	68.0	68.0	68.0
10-11 PM	1592	0.0	OFF	1592	0	0.00	0	68.7	68.7	68.7
11PM-MID	1146	0.0	OFF	1146	0	0.00	0	69.3	69.3	69.3

"OFF" INDICATES NO ROAD WORK (ALL LANES OPEN TO TRAFFIC) + INDICATES QUEUEING EXCEEDS USER-SPECIFIED MAXIMUM LIMIT
 WARNING: THE DEMAND FLOW IN ONE OR MORE HOURS EXCEEDS THE THEORETICAL CAPACITY OF THE MAIN ROUTE *WITHOUT* CONSTRUCTION

----- SITE BREAKDOWN DELAYS -----	
BREAKDOWN DURATION (MINS)	0
RANGE OF QUEUE DELAY - MIN (VEH-H) MAX	0.0
AV BREAKDOWNS PER DAY	0.00
AV QUEUE DELAY/DAY (VEH-H)	0.0
AV TOTAL DELAY/DAY (VEH-H)	0.0

----- SITE ACCIDENT DELAYS -----	
BREAKDOWN DURATION (MINS)	0
RANGE OF QUEUE DELAY - MIN (VEH-H) MAX	0
AV BREAKDOWNS PER DAY	0
AV QUEUE DELAY/DAY (VEH-H)	0
AV TOTAL DELAY/DAY (VEH-H)	0

AVERAGE ACCIDENT NUMBERS (PIA/DAY)	
MAIN ROUTE WITHOUT WORKS	0.0511
MAIN ROUTE WITH WORKS	0.0469
'DIVERSION'	0.0075
<small>PIA: Personal Injury Accidents</small>	
ECONOMIC IMPACT ON ROAD USERS	
ROAD USER COSTS PER DAY	\$69,688
CONGESTED HOURS PER DAY*	3

*Delays Exceeding User-Specified Maximum

**USH 41/45: CTH Q TO STH 145 (WAUKESHA AND MILWAUKEE COUNTIES)
 OFF-PEAK DAY CLOSURE
 NO DIVERSION ROUTE (MAX QUEUE METHOD)**

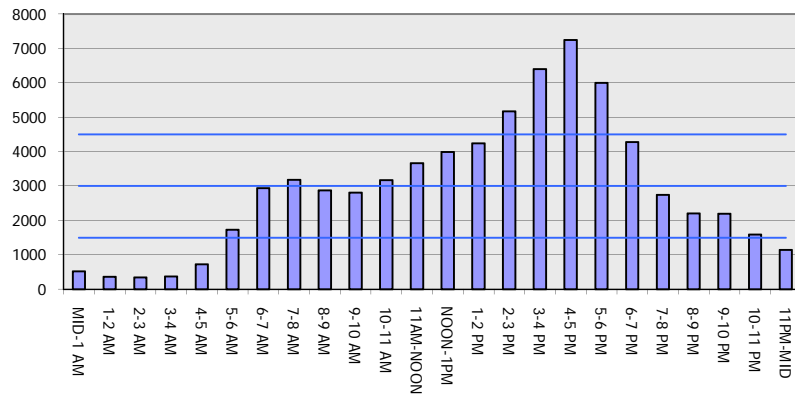
OCTOBER

Analyzed for 2009
 Construction Season

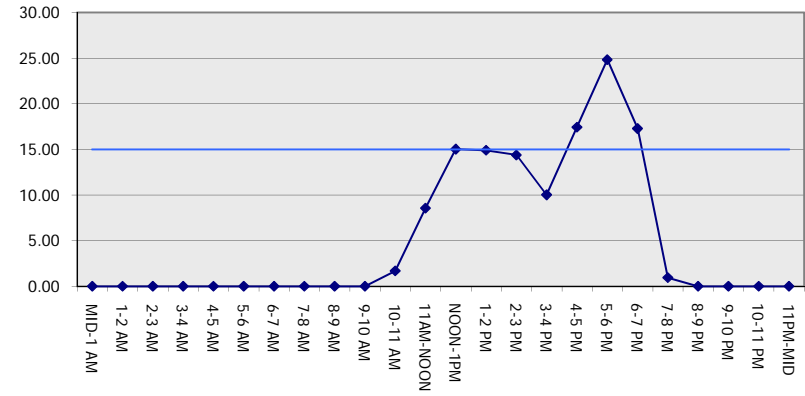
GRAPHICAL REPRESENTATION OF TRAFFIC MODEL INPUT AND OUTPUT

FRIDAY NORTHBOUND DIRECTION

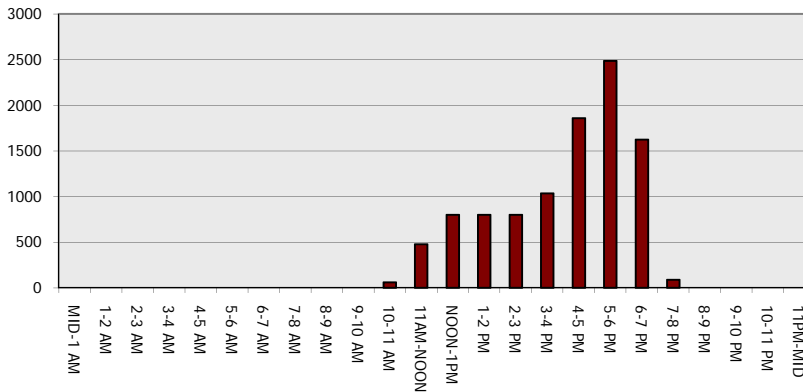
Main Route - Traffic Demand (Vehicles Per Hour)



Main Route Average Delay Per Vehicle (Minutes)



Main Route - Average Queue Length (Vehicles)



Main Route - Average Speed (MPH)

