

USH 41/45: CTH Q TO STH 145 (WAUKESHA AND MILWAUKEE COUNTIES) OFF-PEAK DAY 2 LANE CLOSURE NO DIVERSION ROUTE (MAX QUEUE METHOD)	AUGUST
	Analyzed for 2009 Construction Season

SUMMARY OF TRAFFIC MODEL OUTPUT

MON-THUR SOUTHBOUND DIRECTION

TIME OF DAY	FLOWS AND CAPACITY IN VEH/HR						AVERAGE SPEEDS IN MPH			
	MAIN ROUTE		SITE CAPA CITY	FLOW		AV.DEL PER VEH (MINS)	AVERAGE QUEUE (VEH)	MAIN ROUTE		SITE
	DEMAND FLOW	PCT HEAVY		MAIN ROUTE	'DIVER TED'			WITHOUT WORK ZONE	WITH WORK ZONE	
MID-1 AM	410	0.0	OFF	410	0	0.00	0	70.2	70.2	70.2
1-2 AM	257	0.0	OFF	257	0	0.00	0	70.2	70.2	70.2
2-3 AM	271	0.0	OFF	271	0	0.00	0	70.2	70.2	70.2
3-4 AM	413	0.0	OFF	413	0	0.00	0	70.2	70.2	70.2
4-5 AM	913	0.0	OFF	913	0	0.00	0	69.6	69.6	69.6
5-6 AM	2870	0.0	OFF	2870	0	0.00	0	67.2	67.2	67.2
6-7 AM	5761	0.0	OFF	5761	0	0.00	0	51.5	51.5	51.5
7-8 AM	6563	0.0	OFF	6563	0	0.00	0	46.0	46.0	46.0
8-9 AM	4288	0.0	OFF	4288	0	0.00	0	61.5	61.5	61.5
9-10 AM	3361	0.0	OFF	3361	0	0.00	0	66.6	66.6	66.6
10-11 AM	3197	0.0	1499	1550	1647	16.45+	412	66.8	13.4	36.6
11AM-NOON	3235	0.0	1499	1624	1611	14.42+	379	66.7	14.8	36.0
NOON-1PM	3367	0.0	1499	1737	1630	15.59+	386	66.6	14.0	30.8
1-2 PM	3344	0.0	1500	1500	1844	16.24+	400	66.6	13.5	30.8
2-3 PM	3822	0.0	1500	1500	2322	16.12+	400	64.8	13.5	30.8
3-4 PM	4142	0.0	OFF	4142	0	0.66	45	62.5	54.4	54.4
4-5 PM	4070	0.0	OFF	4070	0	0.00	0	63.0	63.0	63.0
5-6 PM	3583	0.0	OFF	3583	0	0.00	0	66.3	66.3	66.3
6-7 PM	2711	0.0	OFF	2711	0	0.00	0	67.4	67.4	67.4
7-8 PM	2059	0.0	OFF	2059	0	0.00	0	68.2	68.2	68.2
8-9 PM	1830	0.0	OFF	1830	0	0.00	0	68.4	68.4	68.4
9-10 PM	1493	0.0	OFF	1493	0	0.00	0	68.9	68.9	68.9
10-11 PM	1178	0.0	OFF	1178	0	0.00	0	69.2	69.2	69.2
11PM-MID	876	0.0	OFF	876	0	0.00	0	69.6	69.6	69.6

"OFF" INDICATES NO ROAD WORK (ALL LANES OPEN TO TRAFFIC)

+ INDICATES QUEUEING EXCEEDS USER-SPECIFIED MAXIMUM LIMIT

----- SITE BREAKDOWN DELAYS -----	
BREAKDOWN DURATION (MINS)	0
RANGE OF QUEUE DELAY - MIN (VEH-H) MAX	0.0
AV BREAKDOWNS PER DAY	0.00
AV QUEUE DELAY/DAY (VEH-H)	0.0
AV TOTAL DELAY/DAY (VEH-H)	0.0

----- SITE ACCIDENT DELAYS -----	
BREAKDOWN DURATION (MINS)	0
RANGE OF QUEUE DELAY - MIN (VEH-H) MAX	0
AV BREAKDOWNS PER DAY	0
AV QUEUE DELAY/DAY (VEH-H)	0
AV TOTAL DELAY/DAY (VEH-H)	0

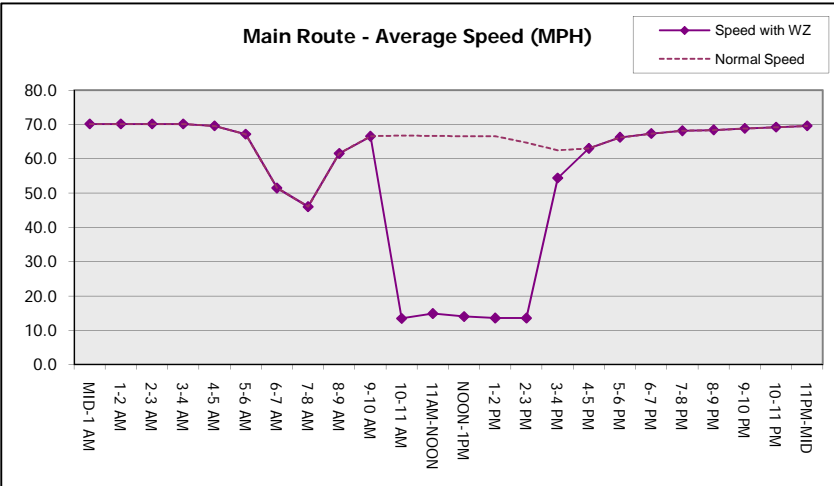
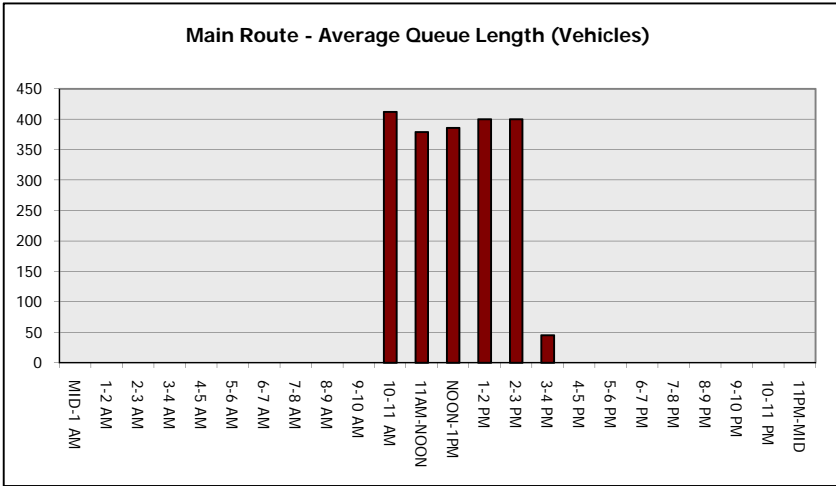
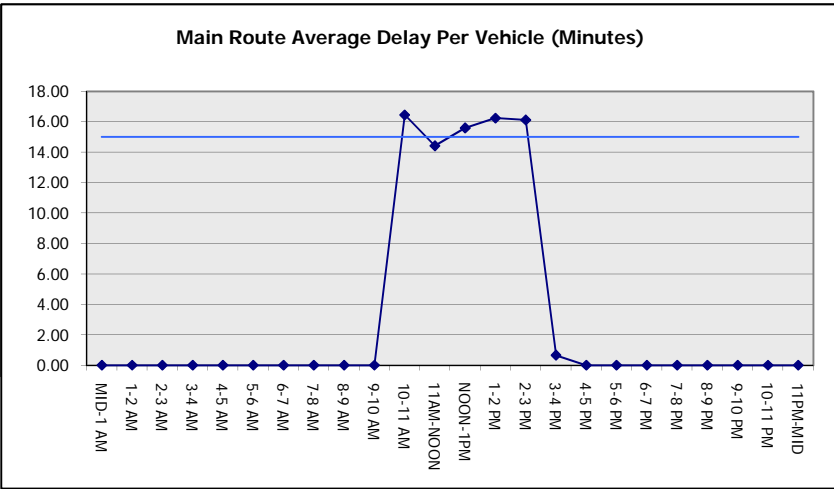
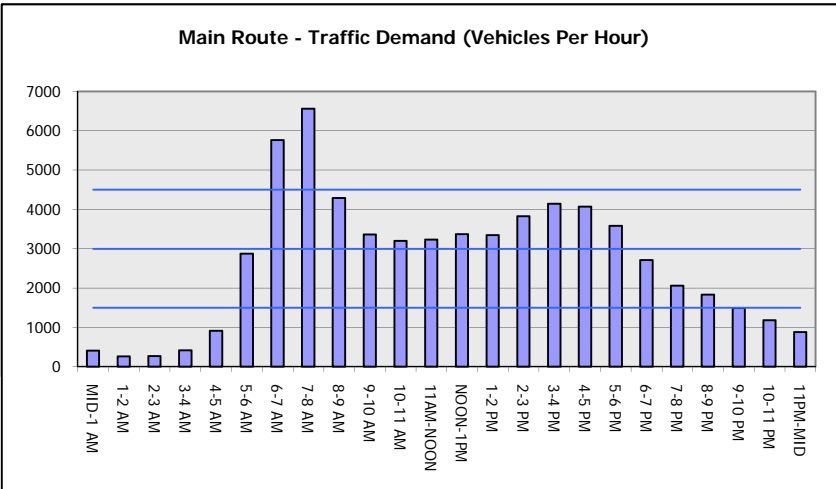
AVERAGE ACCIDENT NUMBERS (PIA/DAY)	
MAIN ROUTE WITHOUT WORKS	0.0468
MAIN ROUTE WITH WORKS	0.0397
'DIVERSION'	0.0153
PIA: Personal Injury Accidents	
IMPACTS ON ROAD USERS	
ROAD USER COSTS PER DAY	\$58,005
CONGESTED HOURS PER DAY*	5

*Delays Exceeding User-Specified Maximum

USH 41/45: CTH Q TO STH 145 (WAUKESHA AND MILWAUKEE COUNTIES)
OFF-PEAK DAY 2 LANE CLOSURE
NO DIVERSION ROUTE (MAX QUEUE METHOD)

AUGUST
 Analyzed for 2009
 Construction Season

GRAPHICAL REPRESENTATION OF TRAFFIC MODEL INPUT AND OUTPUT
MON-THUR SOUTHBOUND DIRECTION



USH 41/45: CTH Q TO STH 145 (WAUKESHA AND MILWAUKEE COUNTIES) OFF-PEAK DAY 2 LANE CLOSURE NO DIVERSION ROUTE (MAX QUEUE METHOD)	AUGUST
	Analyzed for 2009 Construction Season

SUMMARY OF TRAFFIC MODEL OUTPUT

MON-THUR NORTHBOUND DIRECTION

TIME OF DAY	FLOWS AND CAPACITY IN VEH/HR						AVERAGE SPEEDS IN MPH			
	MAIN ROUTE		SITE CAPA CITY	FLOW		AV.DEL PER VEH (MINS)	AVERAGE QUEUE (VEH)	MAIN ROUTE		SITE
	DEMAND FLOW	PCT HEAVY		MAIN ROUTE	'DIVER TED'			WITHOUT WORK ZONE	WITH WORK ZONE	
MID-1 AM	532	0.0	OFF	532	0	0.00	0	70.0	70.0	70.0
1-2 AM	325	0.0	OFF	325	0	0.00	0	70.2	70.2	70.2
2-3 AM	269	0.0	OFF	269	0	0.00	0	70.2	70.2	70.2
3-4 AM	295	0.0	OFF	295	0	0.00	0	70.2	70.2	70.2
4-5 AM	677	0.0	OFF	677	0	0.00	0	69.9	69.9	69.9
5-6 AM	1749	0.0	OFF	1749	0	0.00	0	68.6	68.6	68.6
6-7 AM	3031	0.0	OFF	3031	0	0.00	0	66.9	66.9	66.9
7-8 AM	3134	0.0	OFF	3134	0	0.00	0	66.8	66.8	66.8
8-9 AM	2758	0.0	OFF	2758	0	0.00	0	67.3	67.3	67.3
9-10 AM	2598	0.0	OFF	2598	0	0.00	0	67.5	67.5	67.5
10-11 AM	2766	0.0	1499	1818	948	13.54+	338	67.3	15.6	35.1
11AM-NOON	3005	0.0	1499	1500	1505	16.20+	399	67.0	13.6	31.9
NOON-1PM	3135	0.0	1500	1500	1635	16.19+	399	66.8	13.6	31.9
1-2 PM	3442	0.0	1500	1500	1942	16.16+	400	66.4	13.6	31.9
2-3 PM	4519	0.0	1500	1500	3019	15.71+	400	60.0	13.6	31.9
3-4 PM	5551	0.0	OFF	5551	0	1.35	112	52.9	42.0	42.0
4-5 PM	6652	0.0	OFF	6652	0	0.00	0	45.4	45.4	45.4
5-6 PM	6043	0.0	OFF	6043	0	0.00	0	49.6	49.6	49.6
6-7 PM	3521	0.0	OFF	3521	0	0.00	0	66.4	66.4	66.4
7-8 PM	2416	0.0	OFF	2416	0	0.00	0	67.8	67.8	67.8
8-9 PM	2039	0.0	OFF	2039	0	0.00	0	68.2	68.2	68.2
9-10 PM	1740	0.0	OFF	1740	0	0.00	0	68.6	68.6	68.6
10-11 PM	1527	0.0	OFF	1527	0	0.00	0	68.8	68.8	68.8
11PM-MID	970	0.0	OFF	970	0	0.00	0	69.6	69.6	69.6

"OFF" INDICATES NO ROAD WORK (ALL LANES OPEN TO TRAFFIC)

+ INDICATES QUEUEING EXCEEDS USER-SPECIFIED MAXIMUM LIMIT

----- SITE BREAKDOWN DELAYS -----	
BREAKDOWN DURATION (MINS)	0
RANGE OF QUEUE DELAY - MIN (VEH-H) MAX	0.0
AV BREAKDOWNS PER DAY	0.00
AV QUEUE DELAY/DAY (VEH-H)	0.0
AV TOTAL DELAY/DAY (VEH-H)	0.0

----- SITE ACCIDENT DELAYS -----	
BREAKDOWN DURATION (MINS)	0
RANGE OF QUEUE DELAY - MIN (VEH-H) MAX	0
AV BREAKDOWNS PER DAY	0
AV QUEUE DELAY/DAY (VEH-H)	0
AV TOTAL DELAY/DAY (VEH-H)	0

AVERAGE ACCIDENT NUMBERS (PIA/DAY)	
MAIN ROUTE WITHOUT WORKS	0.0459
MAIN ROUTE WITH WORKS	0.0387
'DIVERSION'	0.0153

PIA: Personal Injury Accidents

ECONOMIC IMPACT ON ROAD USERS	
ROAD USER COSTS PER DAY	\$58,137
CONGESTED HOURS PER DAY*	5

*Delays Exceeding User-Specified Maximum

USH 41/45: CTH Q TO STH 145 (WAUKESHA AND MILWAUKEE COUNTIES)
OFF-PEAK DAY 2 LANE CLOSURE
NO DIVERSION ROUTE (MAX QUEUE METHOD)

AUGUST

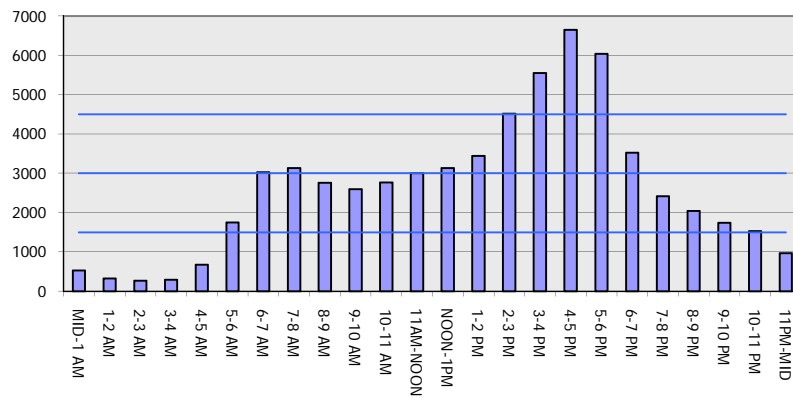
Analyzed for 2009
 Construction Season

GRAPHICAL REPRESENTATION OF TRAFFIC MODEL INPUT AND OUTPUT

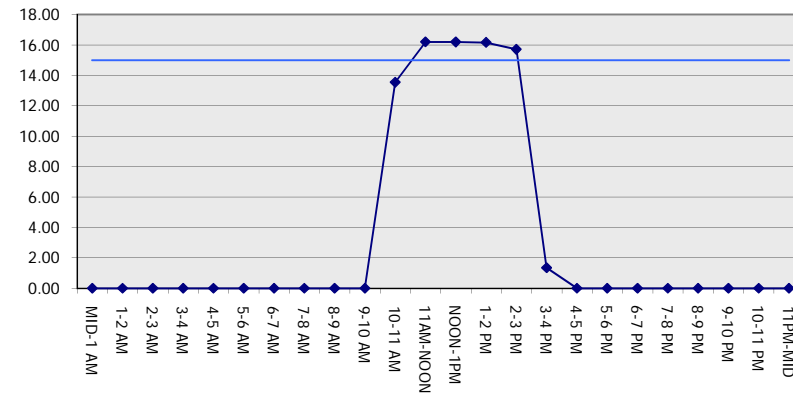
MON-THUR

NORTHBOUND DIRECTION

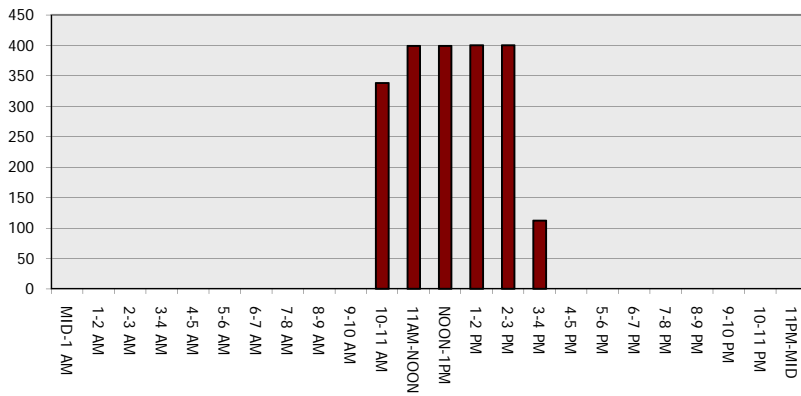
Main Route - Traffic Demand (Vehicles Per Hour)



Main Route Average Delay Per Vehicle (Minutes)



Main Route - Average Queue Length (Vehicles)



Main Route - Average Speed (MPH)

