

IH 94: CTH O TO STH 100 (WAUKESHA COUNTY) OFF-PEAK DAY CLOSURE NO DIVERSION ROUTE (MAX QUEUE METHOD)	OCTOBER
	Analyzed for 2009 Construction Season

SUMMARY OF TRAFFIC MODEL OUTPUT

SUNDAY WESTBOUND DIRECTION

TIME OF DAY	FLOWS AND CAPACITY IN VEH/HR						AVERAGE SPEEDS IN MPH				
	MAIN ROUTE		SITE CAPA CITY	FLOW		AV.DEL PER VEH (MINS)	AVERAGE QUEUE (VEH)	MAIN ROUTE		SITE	
	DEMAND FLOW	PCT HEAVY		MAIN ROUTE	'DIVER TED'			WITHOUT WORK ZONE	WITH WORK ZONE		
MID-1 AM	1123	0.0	OFF	1123	0	0.00	0	69.4	69.4	69.4	
1-2 AM	704	0.0	OFF	704	0	0.00	0	69.9	69.9	69.9	
2-3 AM	594	0.0	OFF	594	0	0.00	0	70.0	70.0	70.0	
3-4 AM	383	0.0	OFF	383	0	0.00	0	70.2	70.2	70.2	
4-5 AM	262	0.0	OFF	262	0	0.00	0	70.2	70.2	70.2	
5-6 AM	424	0.0	OFF	424	0	0.00	0	70.2	70.2	70.2	
6-7 AM	856	0.0	OFF	856	0	0.00	0	69.7	69.7	69.7	
7-8 AM	1128	0.0	OFF	1128	0	0.00	0	69.3	69.3	69.3	
8-9 AM	1467	0.0	OFF	1467	0	0.00	0	68.9	68.9	68.9	
9-10 AM	2266	0.0	2999	2266	0	0.36	0	67.9	60.1	48.6	
10-11 AM	3122	0.0	2999	3122	0	1.29	39	66.9	45.7	37.8	
11AM-NOON	3826	0.0	3000	3826	0	9.66+	554	64.7	15.8	37.3	
NOON-1PM	3687	0.0	2999	2897	791	16.13+	852	65.6	11.7	37.3	
1-2 PM	3372	0.0	2999	2991	382	16.11+	848	66.6	11.7	37.3	
2-3 PM	3246	0.0	2999	2993	252	16.11+	848	66.7	11.7	37.3	
3-4 PM	3524	0.0	2999	2996	528	16.11+	849	66.4	11.7	37.3	
4-5 PM	3839	0.0	2999	2997	841	16.05+	851	64.6	11.7	37.3	
5-6 PM	3288	0.0	3000	2997	291	16.11+	848	66.6	11.7	37.3	
6-7 PM	2881	0.0	2999	2867	14	15.45+	811	67.1	11.9	37.3	
7-8 PM	2403	0.0	OFF	2403	0	0.76	72	67.8	53.0	53.0	
8-9 PM	1830	0.0	OFF	1830	0	0.00	0	68.4	68.4	68.4	
9-10 PM	1495	0.0	OFF	1495	0	0.00	0	68.9	68.9	68.9	
10-11 PM	1437	0.0	OFF	1437	0	0.00	0	68.9	68.9	68.9	
11PM-MID	697	0.0	OFF	697	0	0.00	0	69.9	69.9	69.9	

"OFF" INDICATES NO ROAD WORK (ALL LANES OPEN TO TRAFFIC)

+ INDICATES QUEUEING EXCEEDS USER-SPECIFIED MAXIMUM LIMIT

----- SITE BREAKDOWN DELAYS -----	
BREAKDOWN DURATION (MINS)	0
RANGE OF QUEUE DELAY - MIN (VEH-H) MAX	0.0
AV BREAKDOWNS PER DAY	0.00
AV QUEUE DELAY/DAY (VEH-H)	0.0
AV TOTAL DELAY/DAY (VEH-H)	0.0

----- SITE ACCIDENT DELAYS -----	
BREAKDOWN DURATION (MINS)	0
RANGE OF QUEUE DELAY - MIN (VEH-H) MAX	0
AV BREAKDOWNS PER DAY	0
AV QUEUE DELAY/DAY (VEH-H)	0
AV TOTAL DELAY/DAY (VEH-H)	0

AVERAGE ACCIDENT NUMBERS (PIA/DAY)	
MAIN ROUTE WITHOUT WORKS	0.0236
MAIN ROUTE WITH WORKS	0.0201
'DIVERSION'	0.0035
PIA: Personal Injury Accidents	
IMPACTS ON ROAD USERS	
ROAD USER COSTS PER DAY	\$117,162
CONGESTED HOURS PER DAY*	8

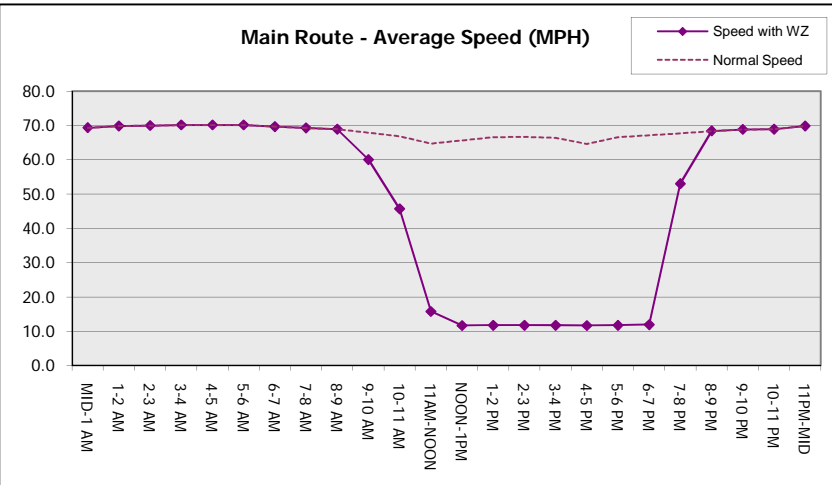
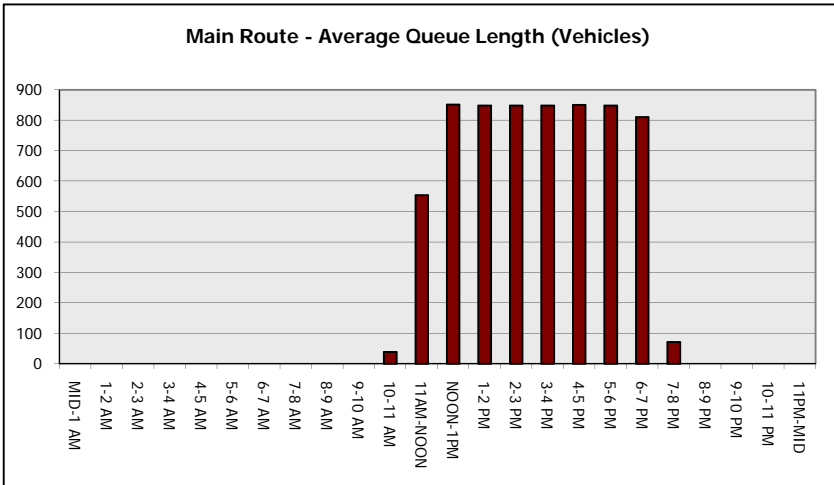
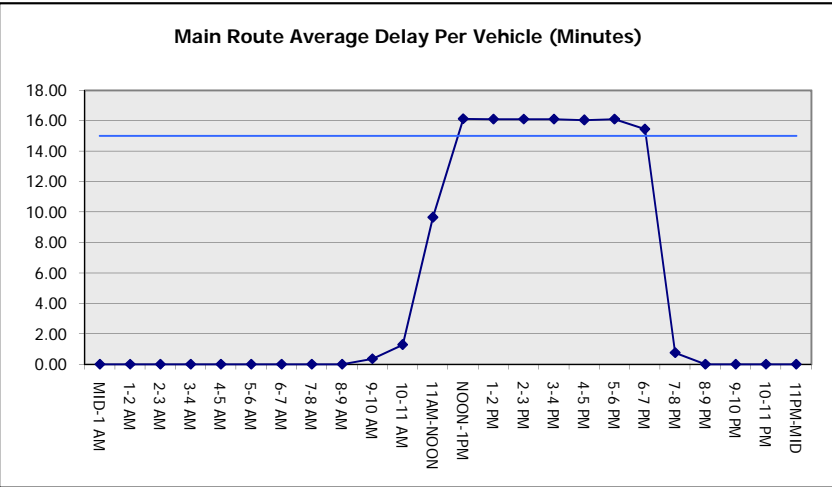
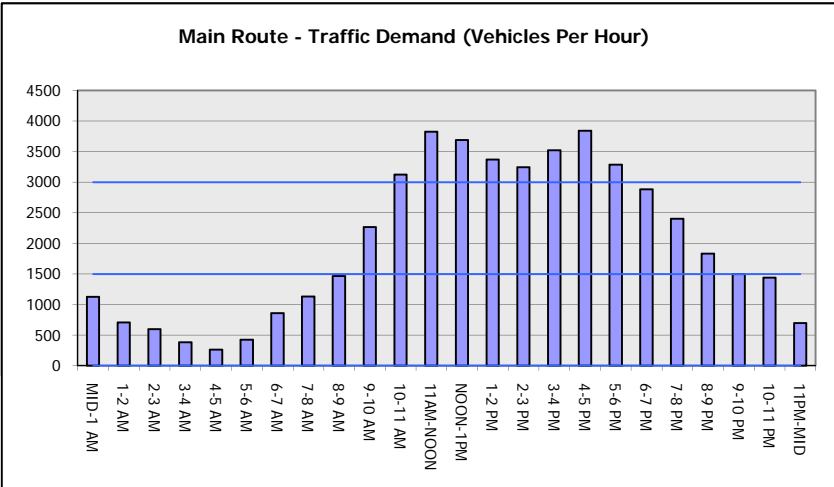
*Delays Exceeding User-Specified Maximum

**IH 94: CTH O TO STH 100 (WAUKESHA COUNTY)
OFF-PEAK DAY CLOSURE
NO DIVERSION ROUTE (MAX QUEUE METHOD)**

OCTOBER
Analyzed for 2009
Construction Season

GRAPHICAL REPRESENTATION OF TRAFFIC MODEL INPUT AND OUTPUT

SUNDAY WESTBOUND DIRECTION



IH 94: CTH O TO STH 100 (WAUKESHA COUNTY) OFF-PEAK DAY CLOSURE NO DIVERSION ROUTE (MAX QUEUE METHOD)	OCTOBER
	Analyzed for 2009 Construction Season

SUMMARY OF TRAFFIC MODEL OUTPUT

SUNDAY EASTBOUND DIRECTION

TIME OF DAY	FLOWS AND CAPACITY IN VEH/HR							AVERAGE SPEEDS IN MPH			
	MAIN ROUTE		SITE CAPA CITY	FLOW		AV.DEL PER VEH (MINS)	AVERAGE QUEUE (VEH)	MAIN ROUTE		SITE	
	DEMAND FLOW	PCT HEAVY		MAIN ROUTE	'DIVER TED'			WITHOUT WORK ZONE	WITH WORK ZONE		
MID-1 AM	1107	0.0	OFF	1107	0	0.00	0	69.4	69.4	69.4	
1-2 AM	573	0.0	OFF	573	0	0.00	0	70.0	70.0	70.0	
2-3 AM	399	0.0	OFF	399	0	0.00	0	70.2	70.2	70.2	
3-4 AM	261	0.0	OFF	261	0	0.00	0	70.2	70.2	70.2	
4-5 AM	277	0.0	OFF	277	0	0.00	0	70.2	70.2	70.2	
5-6 AM	382	0.0	OFF	382	0	0.00	0	70.2	70.2	70.2	
6-7 AM	843	0.0	OFF	843	0	0.00	0	69.7	69.7	69.7	
7-8 AM	1239	0.0	OFF	1239	0	0.00	0	69.2	69.2	69.2	
8-9 AM	1594	0.0	OFF	1594	0	0.00	0	68.7	68.7	68.7	
9-10 AM	2235	0.0	2999	2235	0	0.34	0	67.9	60.5	49.4	
10-11 AM	2956	0.0	2999	2956	0	0.94	18	67.1	50.1	39.2	
11AM-NOON	3785	0.0	3000	3785	0	7.49	439	65.0	18.6	37.3	
NOON-1PM	3841	0.0	2999	2997	843	16.05+	851	64.6	11.7	37.3	
1-2 PM	3605	0.0	3000	2998	607	16.12+	850	66.2	11.7	37.3	
2-3 PM	3685	0.0	2999	2999	687	16.09+	850	65.7	11.7	37.3	
3-4 PM	3762	0.0	3000	2999	763	16.07+	850	65.1	11.7	37.3	
4-5 PM	3474	0.0	3000	2999	475	16.11+	849	66.4	11.7	37.3	
5-6 PM	3251	0.0	3000	2999	252	16.11+	848	66.7	11.7	37.3	
6-7 PM	3768	0.0	2999	3000	768	16.07+	850	65.1	11.7	37.3	
7-8 PM	2906	0.0	OFF	2906	0	1.25	117	67.1	46.2	46.2	
8-9 PM	2167	0.0	OFF	2167	0	0.00	0	68.1	68.1	68.1	
9-10 PM	1794	0.0	OFF	1794	0	0.00	0	68.5	68.5	68.5	
10-11 PM	1188	0.0	OFF	1188	0	0.00	0	69.2	69.2	69.2	
11PM-MID	672	0.0	OFF	672	0	0.00	0	69.9	69.9	69.9	

"OFF" INDICATES NO ROAD WORK (ALL LANES OPEN TO TRAFFIC)

+ INDICATES QUEUEING EXCEEDS USER-SPECIFIED MAXIMUM LIMIT

----- SITE BREAKDOWN DELAYS -----	
BREAKDOWN DURATION (MINS)	0
RANGE OF QUEUE DELAY - MIN (VEH-H) MAX	0.0
AV BREAKDOWNS PER DAY	0.00
AV QUEUE DELAY/DAY (VEH-H)	0.0
AV TOTAL DELAY/DAY (VEH-H)	0.0

----- SITE ACCIDENT DELAYS -----	
BREAKDOWN DURATION (MINS)	0
RANGE OF QUEUE DELAY - MIN (VEH-H) MAX	0
AV BREAKDOWNS PER DAY	0
AV QUEUE DELAY/DAY (VEH-H)	0
AV TOTAL DELAY/DAY (VEH-H)	0

AVERAGE ACCIDENT NUMBERS (PIA/DAY)	
MAIN ROUTE WITHOUT WORKS	0.0246
MAIN ROUTE WITH WORKS	0.0204
'DIVERSION'	0.0050

PIA: Personal Injury Accidents

ECONOMIC IMPACT ON ROAD USERS	
ROAD USER COSTS PER DAY	\$122,209
CONGESTED HOURS PER DAY*	7

*Delays Exceeding User-Specified Maximum

**IH 94: CTH O TO STH 100 (WAUKESHA COUNTY)
OFF-PEAK DAY CLOSURE
NO DIVERSION ROUTE (MAX QUEUE METHOD)**

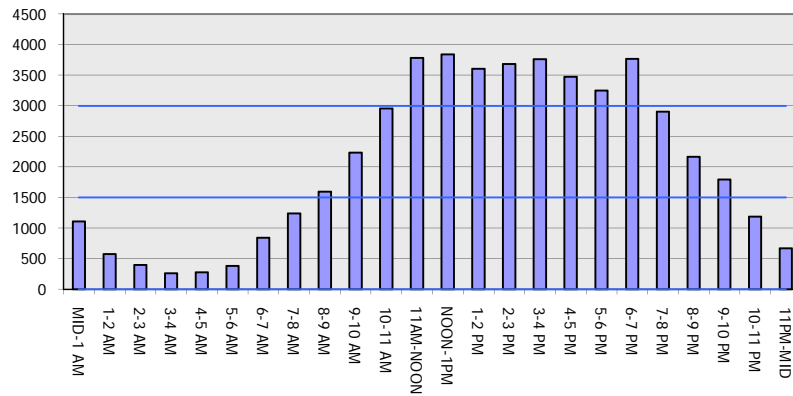
OCTOBER

Analyzed for 2009
Construction Season

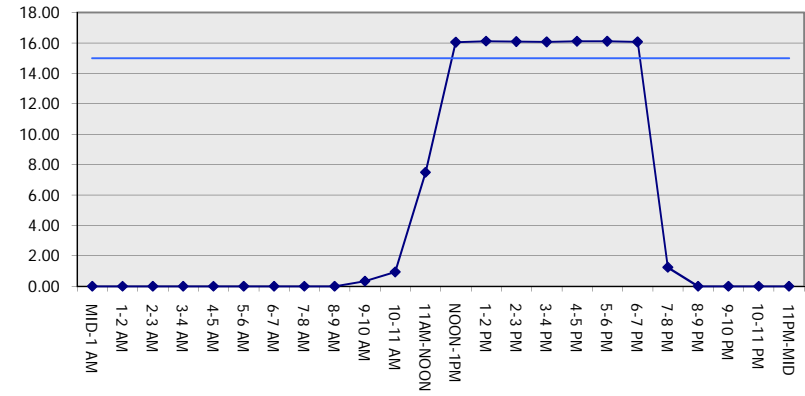
GRAPHICAL REPRESENTATION OF TRAFFIC MODEL INPUT AND OUTPUT

SUNDAY EASTBOUND DIRECTION

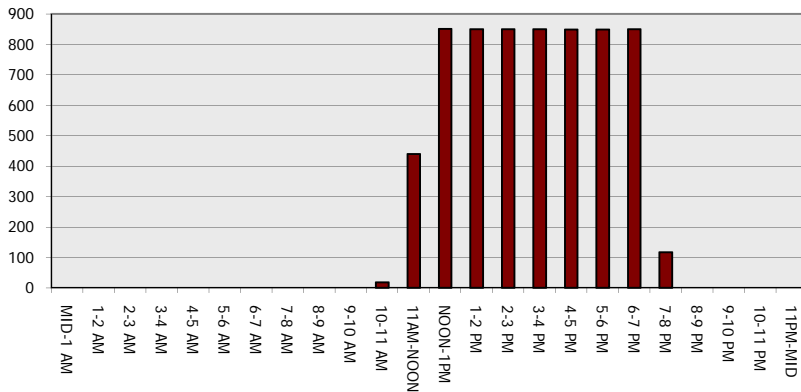
Main Route - Traffic Demand (Vehicles Per Hour)



Main Route Average Delay Per Vehicle (Minutes)



Main Route - Average Queue Length (Vehicles)



Main Route - Average Speed (MPH)

