

IH 94: CTH O TO STH 100 (WAUKESHA COUNTY) OFF-PEAK DAY CLOSURE NO DIVERSION ROUTE (MAX QUEUE METHOD)	OCTOBER
	Analyzed for 2009 Construction Season

SUMMARY OF TRAFFIC MODEL OUTPUT

SATURDAY WESTBOUND DIRECTION

TIME OF DAY	FLOWS AND CAPACITY IN VEH/HR						AVERAGE SPEEDS IN MPH			
	MAIN ROUTE		SITE CAPA CITY	FLOW		AV.DEL PER VEH (MINS)	AVERAGE QUEUE (VEH)	MAIN ROUTE		SITE
	DEMAND FLOW	PCT HEAVY		MAIN ROUTE	'DIVER TED'			WITHOUT WORK ZONE	WITH WORK ZONE	
MID-1 AM	990	0.0	OFF	990	0	0.00	0	69.5	69.5	69.5
1-2 AM	600	0.0	OFF	600	0	0.00	0	70.0	70.0	70.0
2-3 AM	589	0.0	OFF	589	0	0.00	0	70.0	70.0	70.0
3-4 AM	451	0.0	OFF	451	0	0.00	0	70.2	70.2	70.2
4-5 AM	568	0.0	OFF	568	0	0.00	0	70.0	70.0	70.0
5-6 AM	1054	0.0	OFF	1054	0	0.00	0	69.4	69.4	69.4
6-7 AM	1673	0.0	OFF	1673	0	0.00	0	68.7	68.7	68.7
7-8 AM	2450	0.0	OFF	2450	0	0.00	0	67.7	67.7	67.7
8-9 AM	3320	0.0	2999	3320	0	2.48	118	66.6	35.3	37.3
9-10 AM	3771	0.0	3000	3535	236	11.92+	648	65.1	13.7	37.3
10-11 AM	4077	0.0	3000	3001	1076	16.01+	854	63.0	11.7	37.3
11AM-NOON	4492	0.0	2999	3024	1468	16.21+	874	60.2	11.6	37.3
NOON-1PM	4750	0.0	2999	3000	1750	16.28+	884	58.4	11.5	37.3
1-2 PM	4600	0.0	3000	3000	1600	16.30+	882	59.4	11.6	37.3
2-3 PM	4471	0.0	3000	2991	1480	16.23+	875	60.3	11.6	37.3
3-4 PM	4146	0.0	3000	2983	1163	16.02+	856	62.5	11.7	37.3
4-5 PM	4154	0.0	2999	3002	1152	16.02+	856	62.5	11.7	37.3
5-6 PM	3565	0.0	3000	2998	567	16.12+	849	66.3	11.7	37.3
6-7 PM	3621	0.0	OFF	3621	0	1.81	153	66.1	40.2	40.2
7-8 PM	2652	0.0	OFF	2652	0	0.00	0	67.4	67.4	67.4
8-9 PM	2311	0.0	OFF	2311	0	0.00	0	67.9	67.9	67.9
9-10 PM	2291	0.0	OFF	2291	0	0.00	0	67.9	67.9	67.9
10-11 PM	2494	0.0	OFF	2494	0	0.00	0	67.6	67.6	67.6
11PM-MID	1596	0.0	OFF	1596	0	0.00	0	68.7	68.7	68.7

"OFF" INDICATES NO ROAD WORK (ALL LANES OPEN TO TRAFFIC)

+ INDICATES QUEUEING EXCEEDS USER-SPECIFIED MAXIMUM LIMIT

----- SITE BREAKDOWN DELAYS -----	
BREAKDOWN DURATION (MINS)	0
RANGE OF QUEUE DELAY - MIN	0.0
(VEH-H) MAX	0.0
AV BREAKDOWNS PER DAY	0.00
AV QUEUE DELAY/DAY (VEH-H)	0.0
AV TOTAL DELAY/DAY (VEH-H)	0.0

----- SITE ACCIDENT DELAYS -----	
BREAKDOWN DURATION (MINS)	0
RANGE OF QUEUE DELAY - MIN	0
(VEH-H) MAX	0
AV BREAKDOWNS PER DAY	0
AV QUEUE DELAY/DAY (VEH-H)	0
AV TOTAL DELAY/DAY (VEH-H)	0

AVERAGE ACCIDENT NUMBERS (PIA/DAY)	
MAIN ROUTE WITHOUT WORKS	0.0319
MAIN ROUTE WITH WORKS	0.0247
'DIVERSION'	0.0120
PIA: Personal Injury Accidents	
IMPACTS ON ROAD USERS	
ROAD USER COSTS PER DAY	\$166,333
CONGESTED HOURS PER DAY*	9

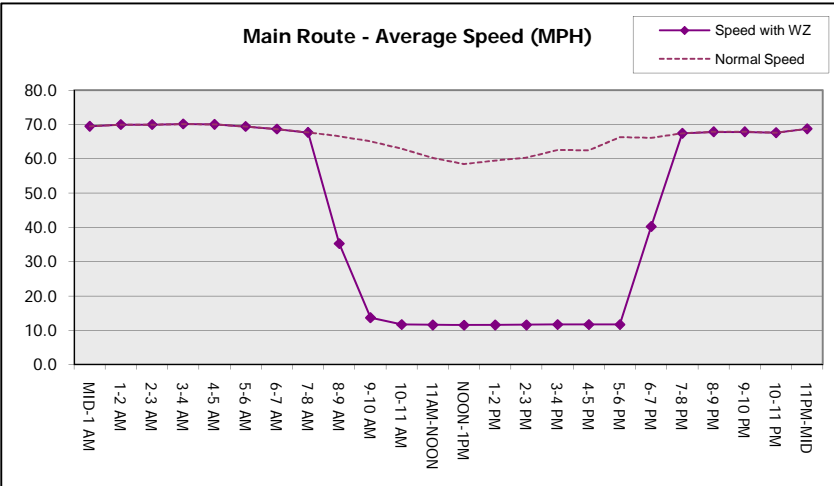
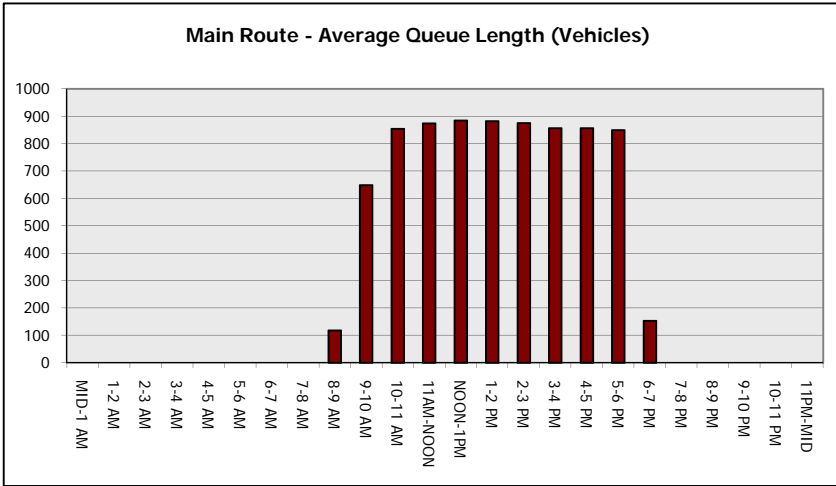
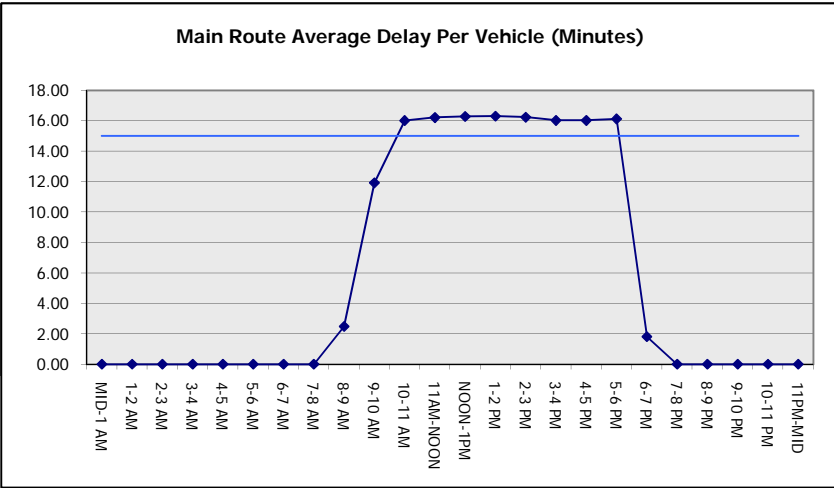
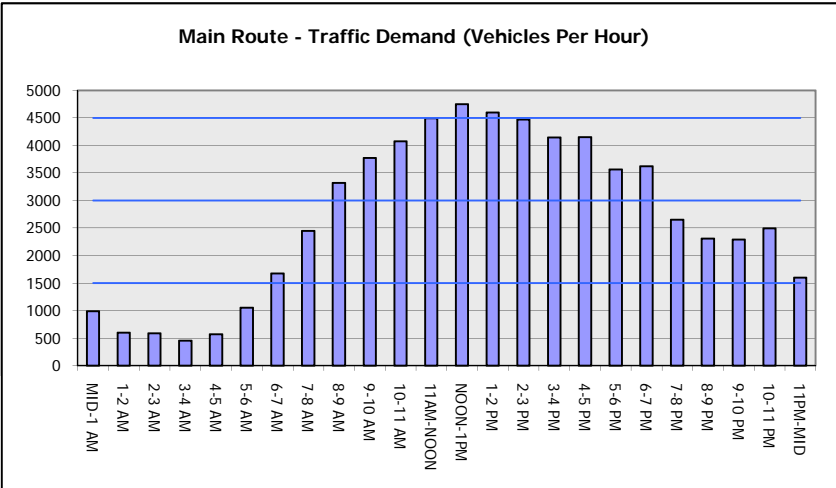
*Delays Exceeding User-Specified Maximum

**IH 94: CTH O TO STH 100 (WAUKESHA COUNTY)
OFF-PEAK DAY CLOSURE
NO DIVERSION ROUTE (MAX QUEUE METHOD)**

OCTOBER
Analyzed for 2009
Construction Season

GRAPHICAL REPRESENTATION OF TRAFFIC MODEL INPUT AND OUTPUT

SATURDAY WESTBOUND DIRECTION



IH 94: CTH O TO STH 100 (WAUKESHA COUNTY) OFF-PEAK DAY CLOSURE NO DIVERSION ROUTE (MAX QUEUE METHOD)	OCTOBER
	Analyzed for 2009 Construction Season

SUMMARY OF TRAFFIC MODEL OUTPUT

SATURDAY EASTBOUND DIRECTION

TIME OF DAY	FLOWS AND CAPACITY IN VEH/HR						AVERAGE SPEEDS IN MPH			
	MAIN ROUTE		SITE CAPA CITY	FLOW		AV.DEL PER VEH (MINS)	AVERAGE QUEUE (VEH)	MAIN ROUTE		SITE
	DEMAND FLOW	PCT HEAVY		MAIN ROUTE	'DIVER TED'			WITHOUT WORK ZONE	WITH WORK ZONE	
MID-1 AM	1057	0.0	OFF	1057	0	0.00	0	69.4	69.4	69.4
1-2 AM	530	0.0	OFF	530	0	0.00	0	70.0	70.0	70.0
2-3 AM	411	0.0	OFF	411	0	0.00	0	70.2	70.2	70.2
3-4 AM	276	0.0	OFF	276	0	0.00	0	70.2	70.2	70.2
4-5 AM	383	0.0	OFF	383	0	0.00	0	70.2	70.2	70.2
5-6 AM	874	0.0	OFF	874	0	0.00	0	69.7	69.7	69.7
6-7 AM	1437	0.0	OFF	1437	0	0.00	0	68.9	68.9	68.9
7-8 AM	1952	0.0	OFF	1952	0	0.00	0	68.3	68.3	68.3
8-9 AM	2898	0.0	2999	2898	0	0.78	8	67.1	52.4	39.6
9-10 AM	3342	0.0	3000	3342	0	3.70	185	66.6	28.6	37.3
10-11 AM	3600	0.0	3000	3538	62	12.08+	647	66.3	13.5	37.3
11AM-NOON	4029	0.0	2999	2950	1079	16.11+	858	63.3	11.7	37.3
NOON-1PM	4355	0.0	2999	3003	1352	16.13+	867	61.1	11.6	37.3
1-2 PM	4277	0.0	3000	2994	1283	16.09+	863	61.7	11.6	37.3
2-3 PM	4387	0.0	2999	3007	1380	16.15+	869	60.9	11.6	37.3
3-4 PM	4352	0.0	3000	2998	1354	16.14+	867	61.1	11.6	37.3
4-5 PM	4482	0.0	3000	3010	1472	16.21+	874	60.2	11.6	37.3
5-6 PM	4752	0.0	2999	3000	1752	16.27+	884	58.4	11.5	37.3
6-7 PM	4382	0.0	OFF	4382	0	2.72	238	60.9	32.2	32.2
7-8 PM	3510	0.0	OFF	3510	0	0.00	0	66.4	66.4	66.4
8-9 PM	2652	0.0	OFF	2652	0	0.00	0	67.4	67.4	67.4
9-10 PM	2837	0.0	OFF	2837	0	0.00	0	67.2	67.2	67.2
10-11 PM	2361	0.0	OFF	2361	0	0.00	0	67.8	67.8	67.8
11PM-MID	1753	0.0	OFF	1753	0	0.00	0	68.6	68.6	68.6

"OFF" INDICATES NO ROAD WORK (ALL LANES OPEN TO TRAFFIC)

+ INDICATES QUEUEING EXCEEDS USER-SPECIFIED MAXIMUM LIMIT

----- SITE BREAKDOWN DELAYS -----	
BREAKDOWN DURATION (MINS)	0
RANGE OF QUEUE DELAY - MIN	0.0
(VEH-H) MAX	0.0
AV BREAKDOWNS PER DAY	0.00
AV QUEUE DELAY/DAY (VEH-H)	0.0
AV TOTAL DELAY/DAY (VEH-H)	0.0

----- SITE ACCIDENT DELAYS -----	
BREAKDOWN DURATION (MINS)	0
RANGE OF QUEUE DELAY - MIN	0
(VEH-H) MAX	0
AV BREAKDOWNS PER DAY	0
AV QUEUE DELAY/DAY (VEH-H)	0
AV TOTAL DELAY/DAY (VEH-H)	0

AVERAGE ACCIDENT NUMBERS (PIA/DAY)	
MAIN ROUTE WITHOUT WORKS	0.0320
MAIN ROUTE WITH WORKS	0.0252
'DIVERSION'	0.0111

PIA: Personal Injury Accidents

ECONOMIC IMPACT ON ROAD USERS	
ROAD USER COSTS PER DAY	\$153,292
CONGESTED HOURS PER DAY*	8

*Delays Exceeding User-Specified Maximum

**IH 94: CTH O TO STH 100 (WAUKESHA COUNTY)
OFF-PEAK DAY CLOSURE
NO DIVERSION ROUTE (MAX QUEUE METHOD)**

OCTOBER

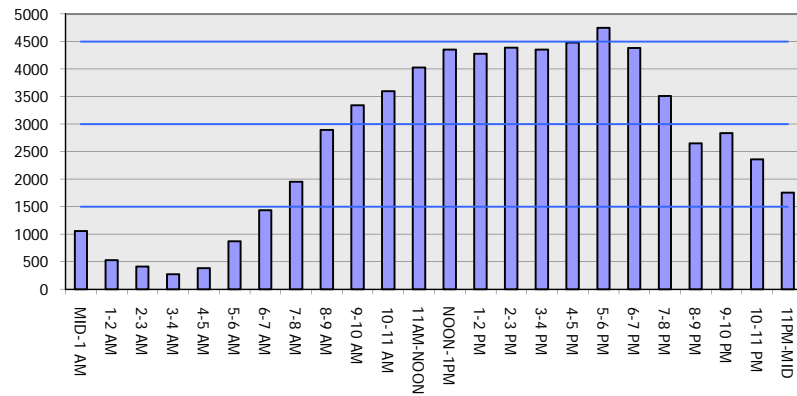
Analyzed for 2009
Construction Season

GRAPHICAL REPRESENTATION OF TRAFFIC MODEL INPUT AND OUTPUT

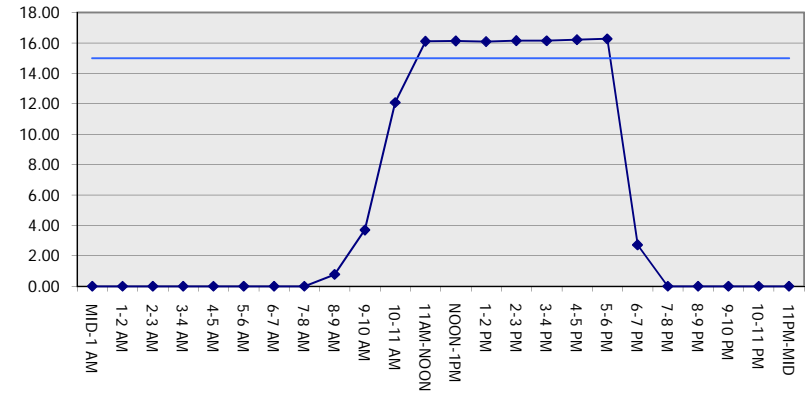
SATURDAY

EASTBOUND DIRECTION

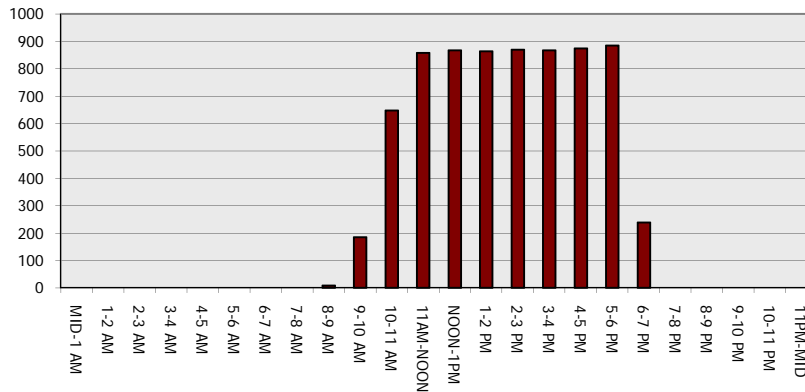
Main Route - Traffic Demand (Vehicles Per Hour)



Main Route Average Delay Per Vehicle (Minutes)



Main Route - Average Queue Length (Vehicles)



Main Route - Average Speed (MPH)

