

IH 94: CTH O TO STH 100 (WAUKESHA COUNTY) OFF-PEAK DAY CLOSURE NO DIVERSION ROUTE (MAX QUEUE METHOD)	OCTOBER
	Analyzed for 2009 Construction Season

SUMMARY OF TRAFFIC MODEL OUTPUT

MON-THUR WESTBOUND DIRECTION

TIME OF DAY	FLOWS AND CAPACITY IN VEH/HR						AVERAGE SPEEDS IN MPH				
	MAIN ROUTE		SITE CAPA CITY	FLOW		AV.DEL PER VEH (MINS)	AVERAGE QUEUE (VEH)	MAIN ROUTE		SITE	
	DEMAND FLOW	PCT HEAVY		MAIN ROUTE	'DIVER TED'			WITHOUT WORK ZONE	WITH WORK ZONE		
MID-1 AM	487	0.0	OFF	487	0	0.00	0	70.1	70.1	70.1	
1-2 AM	290	0.0	OFF	290	0	0.00	0	70.2	70.2	70.2	
2-3 AM	272	0.0	OFF	272	0	0.00	0	70.2	70.2	70.2	
3-4 AM	345	0.0	OFF	345	0	0.00	0	70.2	70.2	70.2	
4-5 AM	713	0.0	OFF	713	0	0.00	0	69.9	69.9	69.9	
5-6 AM	2019	0.0	OFF	2019	0	0.00	0	68.2	68.2	68.2	
6-7 AM	4050	0.0	OFF	4050	0	0.00	0	63.2	63.2	63.2	
7-8 AM	5016	0.0	OFF	5016	0	0.00	0	56.6	56.6	56.6	
8-9 AM	4828	0.0	OFF	4828	0	0.00	0	57.9	57.9	57.9	
9-10 AM	3654	0.0	OFF	3654	0	0.00	0	65.9	65.9	65.9	
10-11 AM	3495	0.0	2999	3495	0	4.43	241	66.4	25.7	37.3	
11AM-NOON	3846	0.0	3000	3378	468	14.42+	768	64.6	12.3	37.3	
NOON-1PM	4152	0.0	2999	2986	1165	16.04+	857	62.5	11.7	37.3	
1-2 PM	4292	0.0	3000	3009	1283	16.09+	863	61.5	11.6	37.3	
2-3 PM	4876	0.0	2999	3005	1871	16.20+	884	57.6	11.5	37.3	
3-4 PM	5766	0.0	OFF	5766	0	7.67	755	51.5	16.5	16.5	
4-5 PM	5664	0.0	OFF	5664	0	4.87	470	52.2	22.0	22.0	
5-6 PM	5454	0.0	OFF	5454	0	0.98	83	53.6	41.9	41.9	
6-7 PM	4386	0.0	OFF	4386	0	0.00	0	60.9	60.9	60.9	
7-8 PM	2910	0.0	OFF	2910	0	0.00	0	67.1	67.1	67.1	
8-9 PM	2270	0.0	OFF	2270	0	0.00	0	67.9	67.9	67.9	
9-10 PM	2039	0.0	OFF	2039	0	0.00	0	68.2	68.2	68.2	
10-11 PM	1476	0.0	OFF	1476	0	0.00	0	68.9	68.9	68.9	
11PM-MID	1016	0.0	OFF	1016	0	0.00	0	69.5	69.5	69.5	

"OFF" INDICATES NO ROAD WORK (ALL LANES OPEN TO TRAFFIC)

+ INDICATES QUEUEING EXCEEDS USER-SPECIFIED MAXIMUM LIMIT

----- SITE BREAKDOWN DELAYS -----	
BREAKDOWN DURATION (MINS)	0
RANGE OF QUEUE DELAY - MIN (VEH-H) MAX	0.0
AV BREAKDOWNS PER DAY	0.00
AV QUEUE DELAY/DAY (VEH-H)	0.0
AV TOTAL DELAY/DAY (VEH-H)	0.0

----- SITE ACCIDENT DELAYS -----	
BREAKDOWN DURATION (MINS)	0
RANGE OF QUEUE DELAY - MIN (VEH-H) MAX	0
AV BREAKDOWNS PER DAY	0
AV QUEUE DELAY/DAY (VEH-H)	0
AV TOTAL DELAY/DAY (VEH-H)	0

AVERAGE ACCIDENT NUMBERS (PIA/DAY)	
MAIN ROUTE WITHOUT WORKS	0.0362
MAIN ROUTE WITH WORKS	0.0328
'DIVERSION'	0.0055
PIA: Personal Injury Accidents	
IMPACTS ON ROAD USERS	
ROAD USER COSTS PER DAY	\$66,167
CONGESTED HOURS PER DAY*	4

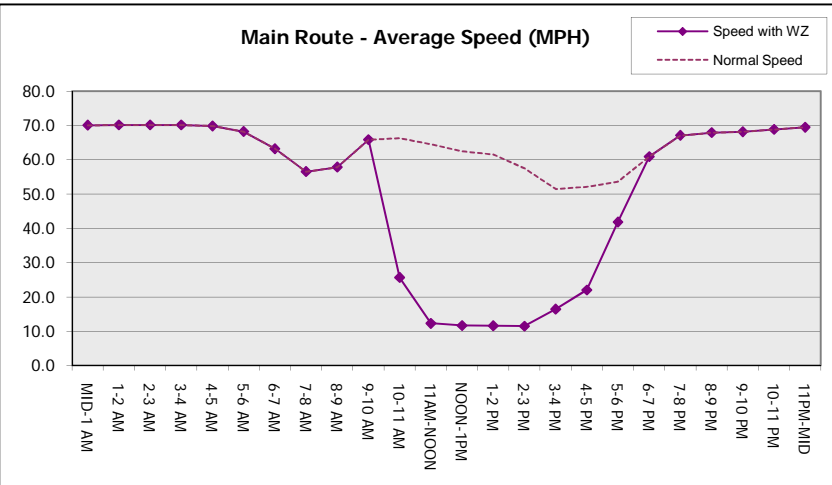
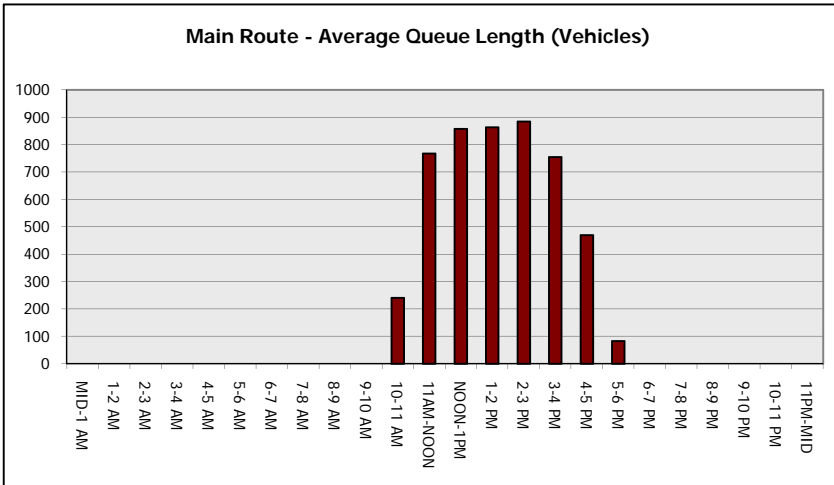
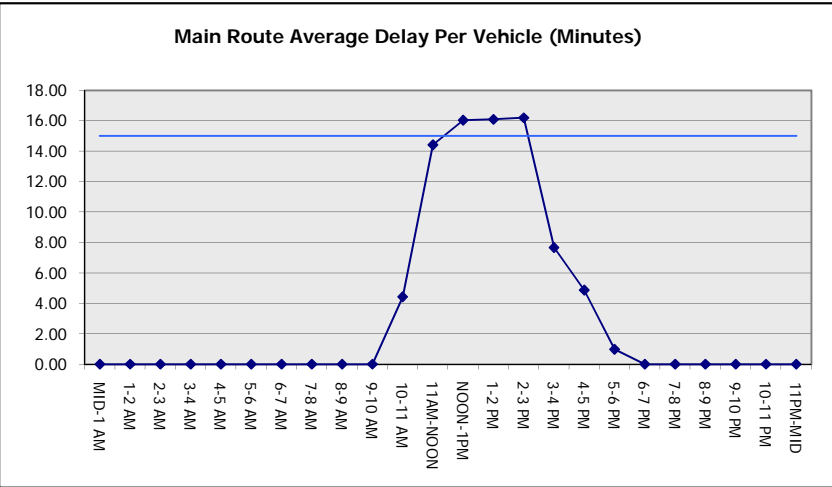
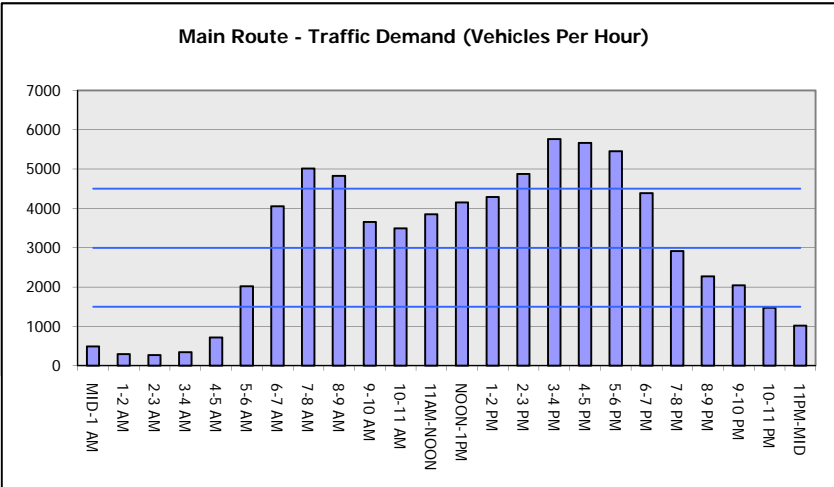
*Delays Exceeding User-Specified Maximum

**IH 94: CTH O TO STH 100 (WAUKESHA COUNTY)
OFF-PEAK DAY CLOSURE
NO DIVERSION ROUTE (MAX QUEUE METHOD)**

OCTOBER
Analyzed for 2009
Construction Season

GRAPHICAL REPRESENTATION OF TRAFFIC MODEL INPUT AND OUTPUT

MON-THUR WESTBOUND DIRECTION



IH 94: CTH O TO STH 100 (WAUKESHA COUNTY) OFF-PEAK DAY CLOSURE NO DIVERSION ROUTE (MAX QUEUE METHOD)	OCTOBER
	Analyzed for 2009 Construction Season

SUMMARY OF TRAFFIC MODEL OUTPUT

MON-THUR EASTBOUND DIRECTION

TIME OF DAY	FLOWS AND CAPACITY IN VEH/HR						AVERAGE SPEEDS IN MPH			
	MAIN ROUTE		SITE CAPA CITY	FLOW		AV.DEL PER VEH (MINS)	AVERAGE QUEUE (VEH)	MAIN ROUTE		SITE
	DEMAND FLOW	PCT HEAVY		MAIN ROUTE	'DIVER TED'			WITHOUT WORK ZONE	WITH WORK ZONE	
MID-1 AM	481	0.0	OFF	481	0	0.00	0	70.1	70.1	70.1
1-2 AM	302	0.0	OFF	302	0	0.00	0	70.2	70.2	70.2
2-3 AM	257	0.0	OFF	257	0	0.00	0	70.2	70.2	70.2
3-4 AM	320	0.0	OFF	320	0	0.00	0	70.2	70.2	70.2
4-5 AM	614	0.0	OFF	614	0	0.00	0	70.0	70.0	70.0
5-6 AM	2068	0.0	OFF	2068	0	0.00	0	68.2	68.2	68.2
6-7 AM	5066	0.0	OFF	5066	0	0.00	0	56.3	56.3	56.3
7-8 AM	5380	0.0	OFF	5380	0	0.00	0	54.1	54.1	54.1
8-9 AM	5059	0.0	OFF	5059	0	0.00	0	56.3	56.3	56.3
9-10 AM	4289	0.0	OFF	4289	0	0.00	0	61.5	61.5	61.5
10-11 AM	3809	0.0	2999	3809	0	6.99	414	64.8	19.4	37.3
11AM-NOON	3964	0.0	2999	3029	935	16.05+	853	63.8	11.7	37.3
NOON-1PM	4151	0.0	3000	3019	1132	16.01+	855	62.5	11.7	37.3
1-2 PM	4223	0.0	3000	3007	1215	16.04+	859	62.0	11.7	37.3
2-3 PM	4849	0.0	2999	3008	1841	16.21+	883	57.8	11.6	37.3
3-4 PM	5524	0.0	OFF	5524	0	6.57	633	53.1	18.4	18.4
4-5 PM	5528	0.0	OFF	5528	0	1.84	165	53.1	34.8	34.8
5-6 PM	5237	0.0	OFF	5237	0	0.00	0	55.1	55.1	55.1
6-7 PM	3902	0.0	OFF	3902	0	0.00	0	64.2	64.2	64.2
7-8 PM	2810	0.0	OFF	2810	0	0.00	0	67.3	67.3	67.3
8-9 PM	2489	0.0	OFF	2489	0	0.00	0	67.6	67.6	67.6
9-10 PM	2309	0.0	OFF	2309	0	0.00	0	67.9	67.9	67.9
10-11 PM	1630	0.0	OFF	1630	0	0.00	0	68.7	68.7	68.7
11PM-MID	1059	0.0	OFF	1059	0	0.00	0	69.4	69.4	69.4

"OFF" INDICATES NO ROAD WORK (ALL LANES OPEN TO TRAFFIC)

+ INDICATES QUEUEING EXCEEDS USER-SPECIFIED MAXIMUM LIMIT

----- SITE BREAKDOWN DELAYS -----	
BREAKDOWN DURATION (MINS)	0
RANGE OF QUEUE DELAY - MIN (VEH-H) MAX	0.0
AV BREAKDOWNS PER DAY	0.00
AV QUEUE DELAY/DAY (VEH-H)	0.0
AV TOTAL DELAY/DAY (VEH-H)	0.0

----- SITE ACCIDENT DELAYS -----	
BREAKDOWN DURATION (MINS)	0
RANGE OF QUEUE DELAY - MIN (VEH-H) MAX	0
AV BREAKDOWNS PER DAY	0
AV QUEUE DELAY/DAY (VEH-H)	0
AV TOTAL DELAY/DAY (VEH-H)	0

AVERAGE ACCIDENT NUMBERS (PIA/DAY)	
MAIN ROUTE WITHOUT WORKS	0.0372
MAIN ROUTE WITH WORKS	0.0336
'DIVERSION'	0.0059

PIA: Personal Injury Accidents

ECONOMIC IMPACT ON ROAD USERS	
ROAD USER COSTS PER DAY	\$63,753
CONGESTED HOURS PER DAY*	4

*Delays Exceeding User-Specified Maximum

**IH 94: CTH O TO STH 100 (WAUKESHA COUNTY)
OFF-PEAK DAY CLOSURE
NO DIVERSION ROUTE (MAX QUEUE METHOD)**

OCTOBER

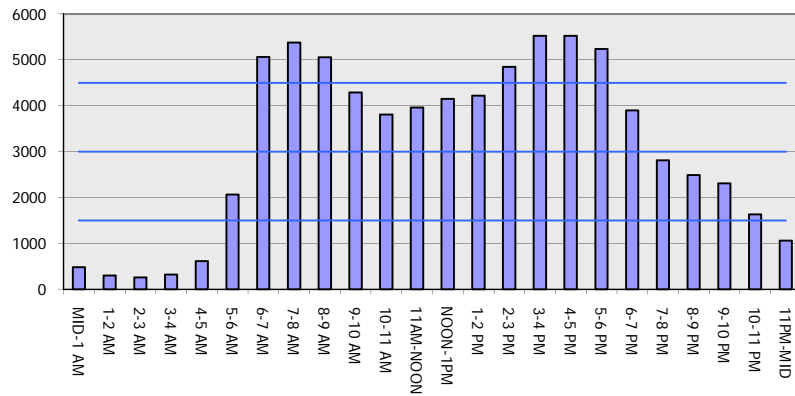
Analyzed for 2009
Construction Season

GRAPHICAL REPRESENTATION OF TRAFFIC MODEL INPUT AND OUTPUT

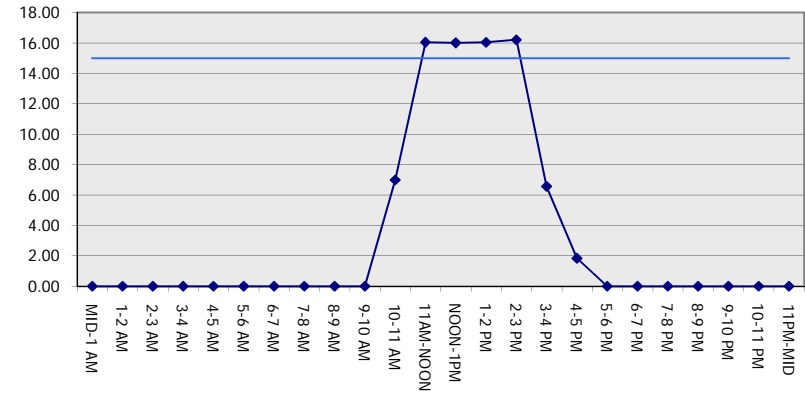
MON-THUR

EASTBOUND DIRECTION

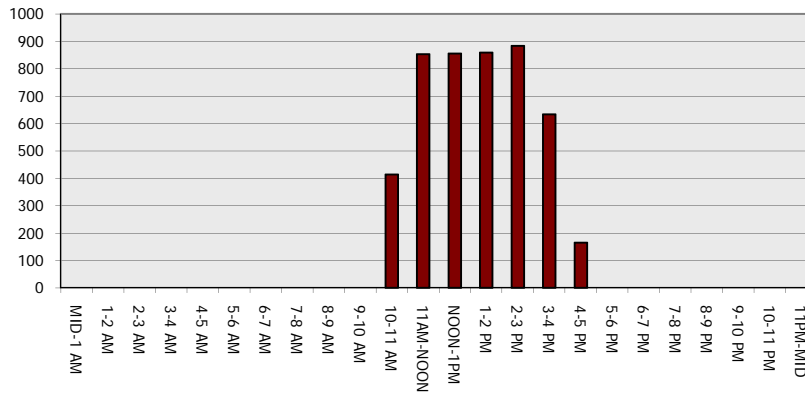
Main Route - Traffic Demand (Vehicles Per Hour)



Main Route Average Delay Per Vehicle (Minutes)



Main Route - Average Queue Length (Vehicles)



Main Route - Average Speed (MPH)

