

IH 94: CTH O TO STH 100 (WAUKESHA COUNTY) OFF-PEAK DAY 2 LANE CLOSURE NO DIVERSION ROUTE (MAX QUEUE METHOD)	OCTOBER
	Analyzed for 2009 Construction Season

SUMMARY OF TRAFFIC MODEL OUTPUT

FRIDAY WESTBOUND DIRECTION

TIME OF DAY	FLOWS AND CAPACITY IN VEH/HR						AVERAGE SPEEDS IN MPH				
	MAIN ROUTE		SITE CAPA CITY	FLOW		AV.DEL PER VEH (MINS)	AVERAGE QUEUE (VEH)	MAIN ROUTE		SITE	
	DEMAND FLOW	PCT HEAVY		MAIN ROUTE	'DIVER TED'			WITHOUT WORK ZONE	WITH WORK ZONE		
MID-1 AM	355	0.0	OFF	355	0	0.00	0	70.2	70.2	70.2	
1-2 AM	260	0.0	OFF	260	0	0.00	0	70.2	70.2	70.2	
2-3 AM	302	0.0	OFF	302	0	0.00	0	70.2	70.2	70.2	
3-4 AM	447	0.0	OFF	447	0	0.00	0	70.2	70.2	70.2	
4-5 AM	829	0.0	OFF	829	0	0.00	0	69.7	69.7	69.7	
5-6 AM	2169	0.0	OFF	2169	0	0.00	0	68.1	68.1	68.1	
6-7 AM	4576	0.0	OFF	4576	0	0.00	0	59.6	59.6	59.6	
7-8 AM	5783	0.0	OFF	5783	0	0.00	0	51.4	51.4	51.4	
8-9 AM	5099	0.0	OFF	5099	0	0.00	0	56.0	56.0	56.0	
9-10 AM	4134	0.0	OFF	4134	0	0.00	0	62.6	62.6	62.6	
10-11 AM	4297	0.0	1499	1550	2747	16.25+	412	61.5	9.6	36.6	
11AM-NOON	4756	0.0	1499	1841	2915	14.42+	381	58.4	10.6	35.5	
NOON-1PM	5042	0.0	1499	1500	3542	15.78+	399	56.4	9.7	30.8	
1-2 PM	5324	0.0	1500	1500	3824	15.66+	400	54.5	9.7	30.8	
2-3 PM	5857	0.0	1500	1500	4357	15.42+	400	50.9	9.7	30.8	
3-4 PM	6185	0.0	OFF	6185	0	4.73	483	48.6	21.7	21.7	
4-5 PM	5612	0.0	OFF	5612	0	4.00	381	52.5	24.7	24.7	
5-6 PM	5356	0.0	OFF	5356	0	0.36	27	54.3	49.2	49.2	
6-7 PM	5292	0.0	OFF	5292	0	0.00	0	54.7	54.7	54.7	
7-8 PM	3550	0.0	OFF	3550	0	0.00	0	66.3	66.3	66.3	
8-9 PM	2444	0.0	OFF	2444	0	0.00	0	67.7	67.7	67.7	
9-10 PM	2549	0.0	OFF	2549	0	0.00	0	67.6	67.6	67.6	
10-11 PM	2173	0.0	OFF	2173	0	0.00	0	68.1	68.1	68.1	
11PM-MID	1580	0.0	OFF	1580	0	0.00	0	68.7	68.7	68.7	

"OFF" INDICATES NO ROAD WORK (ALL LANES OPEN TO TRAFFIC)

+ INDICATES QUEUEING EXCEEDS USER-SPECIFIED MAXIMUM LIMIT

----- SITE BREAKDOWN DELAYS -----	
BREAKDOWN DURATION (MINS)	0
RANGE OF QUEUE DELAY - MIN (VEH-H) MAX	0.0
AV BREAKDOWNS PER DAY	0.00
AV QUEUE DELAY/DAY (VEH-H)	0.0
AV TOTAL DELAY/DAY (VEH-H)	0.0

----- SITE ACCIDENT DELAYS -----	
BREAKDOWN DURATION (MINS)	0
RANGE OF QUEUE DELAY - MIN (VEH-H) MAX	0
AV BREAKDOWNS PER DAY	0
AV QUEUE DELAY/DAY (VEH-H)	0
AV TOTAL DELAY/DAY (VEH-H)	0

AVERAGE ACCIDENT NUMBERS (PIA/DAY)	
MAIN ROUTE WITHOUT WORKS	0.0414
MAIN ROUTE WITH WORKS	0.0323
'DIVERSION'	0.0199
PIA: Personal Injury Accidents	
IMPACTS ON ROAD USERS	
ROAD USER COSTS PER DAY	\$90,925
CONGESTED HOURS PER DAY*	5

*Delays Exceeding User-Specified Maximum

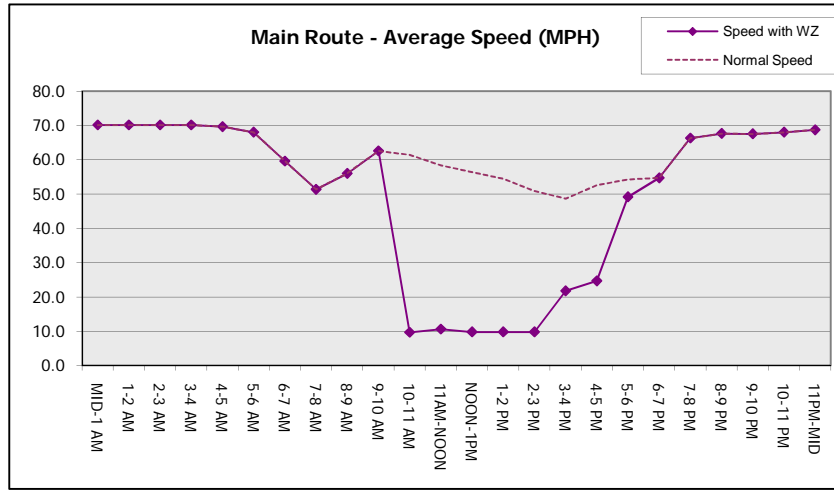
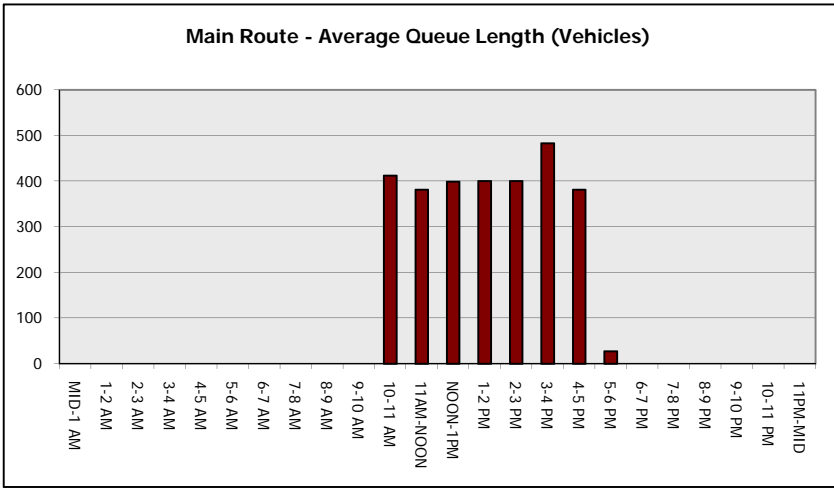
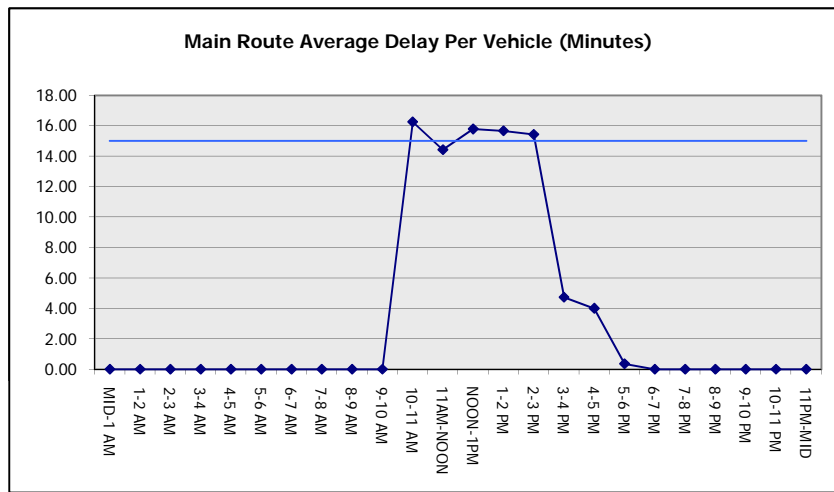
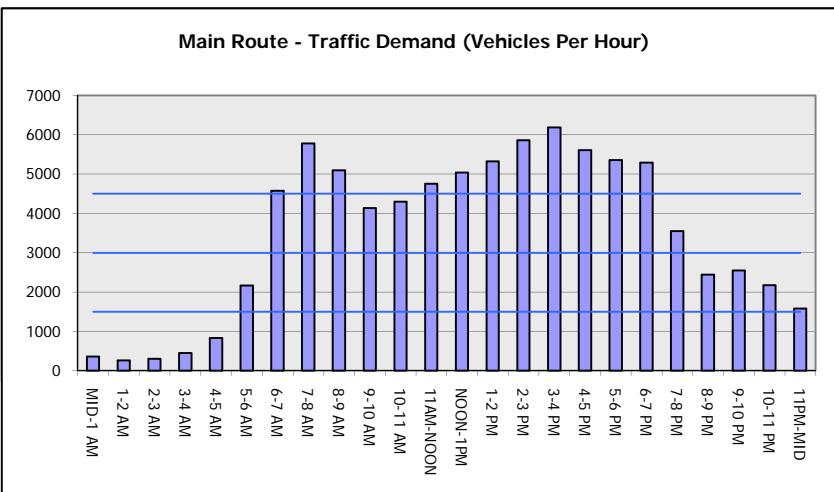
IH 94: CTH 0 TO STH 100 (WAUKESHA COUNTY)
OFF-PEAK DAY 2 LANE CLOSURE
NO DIVERSION ROUTE (MAX QUEUE METHOD)

OCTOBER

Analyzed for 2009
 Construction Season

GRAPHICAL REPRESENTATION OF TRAFFIC MODEL INPUT AND OUTPUT

FRIDAY WESTBOUND DIRECTION



IH 94: CTH O TO STH 100 (WAUKESHA COUNTY) OFF-PEAK DAY 2 LANE CLOSURE NO DIVERSION ROUTE (MAX QUEUE METHOD)	OCTOBER
	Analyzed for 2009 Construction Season

SUMMARY OF TRAFFIC MODEL OUTPUT

FRIDAY EASTBOUND DIRECTION

TIME OF DAY	FLOWS AND CAPACITY IN VEH/HR						AVERAGE SPEEDS IN MPH			
	MAIN ROUTE		SITE CAPA CITY	FLOW		AV.DEL PER VEH (MINS)	AVERAGE QUEUE (VEH)	MAIN ROUTE		SITE
	DEMAND FLOW	PCT HEAVY		MAIN ROUTE	'DIVER TED'			WITHOUT WORK ZONE	WITH WORK ZONE	
MID-1 AM	312	0.0	OFF	312	0	0.00	0	70.2	70.2	70.2
1-2 AM	223	0.0	OFF	223	0	0.00	0	70.2	70.2	70.2
2-3 AM	264	0.0	OFF	264	0	0.00	0	70.2	70.2	70.2
3-4 AM	402	0.0	OFF	402	0	0.00	0	70.2	70.2	70.2
4-5 AM	711	0.0	OFF	711	0	0.00	0	69.9	69.9	69.9
5-6 AM	2226	0.0	OFF	2226	0	0.00	0	67.9	67.9	67.9
6-7 AM	5331	0.0	OFF	5331	0	0.00	0	54.5	54.5	54.5
7-8 AM	6102	0.0	OFF	6102	0	0.00	0	49.2	49.2	49.2
8-9 AM	5154	0.0	OFF	5154	0	0.00	0	55.6	55.6	55.6
9-10 AM	4412	0.0	OFF	4412	0	0.00	0	60.7	60.7	60.7
10-11 AM	4082	0.0	1499	1550	2532	16.32+	412	63.0	9.6	36.6
11AM-NOON	4440	0.0	1499	1787	2652	14.40+	379	60.5	10.6	35.6
NOON-1PM	4689	0.0	1499	1500	3189	15.92+	399	58.8	9.7	30.8
1-2 PM	4845	0.0	1499	1500	3345	15.86+	400	57.8	9.7	30.8
2-3 PM	5593	0.0	1500	1500	4093	15.54+	400	52.7	9.7	30.8
3-4 PM	5942	0.0	OFF	5942	0	3.11	308	50.2	27.3	27.3
4-5 PM	5705	0.0	OFF	5705	0	1.46	131	51.9	36.9	36.9
5-6 PM	5445	0.0	OFF	5445	0	0.00	0	53.7	53.7	53.7
6-7 PM	4751	0.0	OFF	4751	0	0.00	0	58.4	58.4	58.4
7-8 PM	3729	0.0	OFF	3729	0	0.00	0	65.4	65.4	65.4
8-9 PM	2843	0.0	OFF	2843	0	0.00	0	67.2	67.2	67.2
9-10 PM	2872	0.0	OFF	2872	0	0.00	0	67.2	67.2	67.2
10-11 PM	2430	0.0	OFF	2430	0	0.00	0	67.7	67.7	67.7
11PM-MID	1737	0.0	OFF	1737	0	0.00	0	68.6	68.6	68.6

"OFF" INDICATES NO ROAD WORK (ALL LANES OPEN TO TRAFFIC)

+ INDICATES QUEUEING EXCEEDS USER-SPECIFIED MAXIMUM LIMIT

----- SITE BREAKDOWN DELAYS -----	
BREAKDOWN DURATION (MINS)	0
RANGE OF QUEUE DELAY - MIN	0.0
(VEH-H) MAX	0.0
AV BREAKDOWNS PER DAY	0.00
AV QUEUE DELAY/DAY (VEH-H)	0.0
AV TOTAL DELAY/DAY (VEH-H)	0.0

----- SITE ACCIDENT DELAYS -----	
BREAKDOWN DURATION (MINS)	0
RANGE OF QUEUE DELAY - MIN	0
(VEH-H) MAX	0
AV BREAKDOWNS PER DAY	0
AV QUEUE DELAY/DAY (VEH-H)	0
AV TOTAL DELAY/DAY (VEH-H)	0

AVERAGE ACCIDENT NUMBERS (PIA/DAY)	
MAIN ROUTE WITHOUT WORKS	0.0416
MAIN ROUTE WITH WORKS	0.0332
'DIVERSION'	0.0181

PIA: Personal Injury Accidents

ECONOMIC IMPACT ON ROAD USERS	
ROAD USER COSTS PER DAY	\$80,813
CONGESTED HOURS PER DAY*	5

*Delays Exceeding User-Specified Maximum

**IH 94: CTH O TO STH 100 (WAUKESHA COUNTY)
 OFF-PEAK DAY 2 LANE CLOSURE
 NO DIVERSION ROUTE (MAX QUEUE METHOD)**

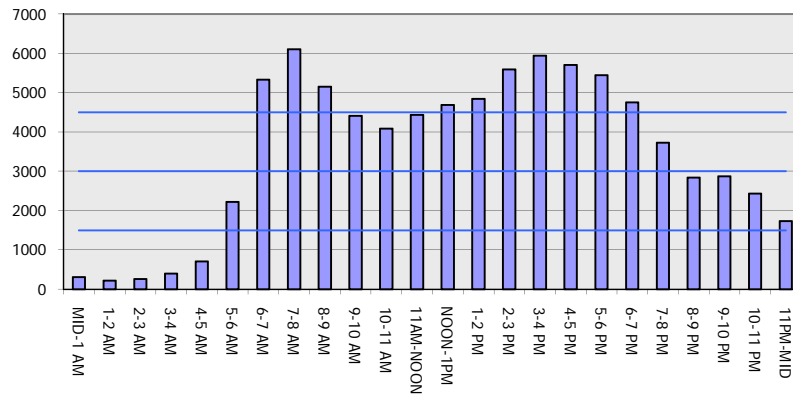
OCTOBER

Analyzed for 2009
 Construction Season

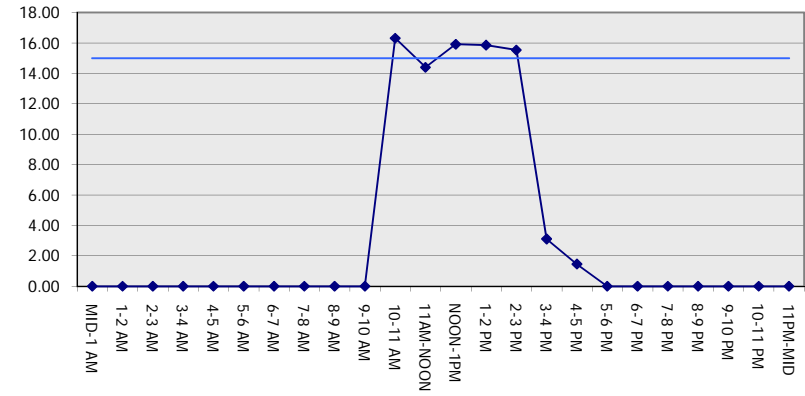
GRAPHICAL REPRESENTATION OF TRAFFIC MODEL INPUT AND OUTPUT

FRIDAY EASTBOUND DIRECTION

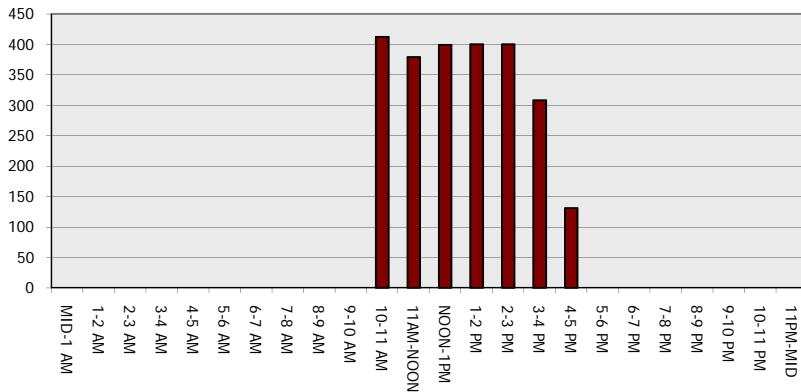
Main Route - Traffic Demand (Vehicles Per Hour)



Main Route Average Delay Per Vehicle (Minutes)



Main Route - Average Queue Length (Vehicles)



Main Route - Average Speed (MPH)

