

IH 94: CTH O TO STH 100 (WAUKESHA COUNTY) OFF-PEAK DAY CLOSURE NO DIVERSION ROUTE (MAX QUEUE METHOD)	OCTOBER
	Analyzed for 2009 Construction Season

SUMMARY OF TRAFFIC MODEL OUTPUT

FRIDAY WESTBOUND DIRECTION

TIME OF DAY	FLOWS AND CAPACITY IN VEH/HR						AVERAGE SPEEDS IN MPH			
	MAIN ROUTE		SITE CAPA CITY	FLOW		AV.DEL PER VEH (MINS)	AVERAGE QUEUE (VEH)	MAIN ROUTE		SITE
	DEMAND FLOW	PCT HEAVY		MAIN ROUTE	'DIVER TED'			WITHOUT WORK ZONE	WITH WORK ZONE	
MID-1 AM	355	0.0	OFF	355	0	0.00	0	70.2	70.2	70.2
1-2 AM	260	0.0	OFF	260	0	0.00	0	70.2	70.2	70.2
2-3 AM	302	0.0	OFF	302	0	0.00	0	70.2	70.2	70.2
3-4 AM	447	0.0	OFF	447	0	0.00	0	70.2	70.2	70.2
4-5 AM	829	0.0	OFF	829	0	0.00	0	69.7	69.7	69.7
5-6 AM	2169	0.0	OFF	2169	0	0.00	0	68.1	68.1	68.1
6-7 AM	4576	0.0	OFF	4576	0	0.00	0	59.6	59.6	59.6
7-8 AM	5783	0.0	OFF	5783	0	0.00	0	51.4	51.4	51.4
8-9 AM	5099	0.0	OFF	5099	0	0.00	0	56.0	56.0	56.0
9-10 AM	4134	0.0	OFF	4134	0	0.00	0	62.6	62.6	62.6
10-11 AM	4297	0.0	2999	3860	436	9.36+	564	61.5	16.2	37.3
11AM-NOON	4756	0.0	2999	3012	1743	16.24+	883	58.4	11.6	37.3
NOON-1PM	5042	0.0	3000	3000	2042	16.13+	884	56.4	11.5	37.3
1-2 PM	5324	0.0	3000	3000	2324	15.99+	884	54.5	11.5	37.3
2-3 PM	5857	0.0	3000	3000	2857	15.68+	884	50.9	11.5	37.3
3-4 PM	6185	0.0	OFF	6185	0	9.56	965	48.6	13.9	13.9
4-5 PM	5612	0.0	OFF	5612	0	8.82	863	52.5	15.0	15.0
5-6 PM	5356	0.0	OFF	5356	0	3.78	347	54.3	25.8	25.8
6-7 PM	5292	0.0	OFF	5292	0	0.02	0	54.7	54.5	54.5
7-8 PM	3550	0.0	OFF	3550	0	0.00	0	66.3	66.3	66.3
8-9 PM	2444	0.0	OFF	2444	0	0.00	0	67.7	67.7	67.7
9-10 PM	2549	0.0	OFF	2549	0	0.00	0	67.6	67.6	67.6
10-11 PM	2173	0.0	OFF	2173	0	0.00	0	68.1	68.1	68.1
11PM-MID	1580	0.0	OFF	1580	0	0.00	0	68.7	68.7	68.7

"OFF" INDICATES NO ROAD WORK (ALL LANES OPEN TO TRAFFIC)

+ INDICATES QUEUEING EXCEEDS USER-SPECIFIED MAXIMUM LIMIT

----- SITE BREAKDOWN DELAYS -----	
BREAKDOWN DURATION (MINS)	0
RANGE OF QUEUE DELAY - MIN (VEH-H) MAX	0.0
AV BREAKDOWNS PER DAY	0.00
AV QUEUE DELAY/DAY (VEH-H)	0.0
AV TOTAL DELAY/DAY (VEH-H)	0.0

----- SITE ACCIDENT DELAYS -----	
BREAKDOWN DURATION (MINS)	0
RANGE OF QUEUE DELAY - MIN (VEH-H) MAX	0
AV BREAKDOWNS PER DAY	0
AV QUEUE DELAY/DAY (VEH-H)	0
AV TOTAL DELAY/DAY (VEH-H)	0

AVERAGE ACCIDENT NUMBERS (PIA/DAY)	
MAIN ROUTE WITHOUT WORKS	0.0414
MAIN ROUTE WITH WORKS	0.0357
'DIVERSION'	0.0107
PIA: Personal Injury Accidents	
IMPACTS ON ROAD USERS	
ROAD USER COSTS PER DAY	\$86,459
CONGESTED HOURS PER DAY*	5

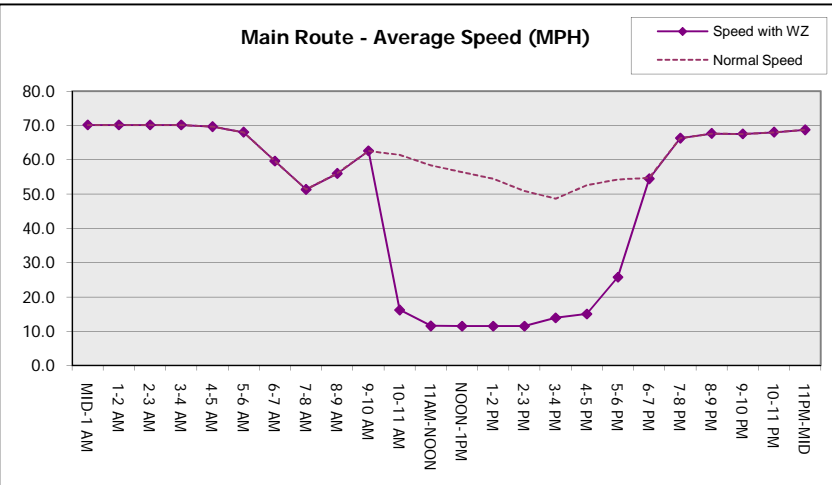
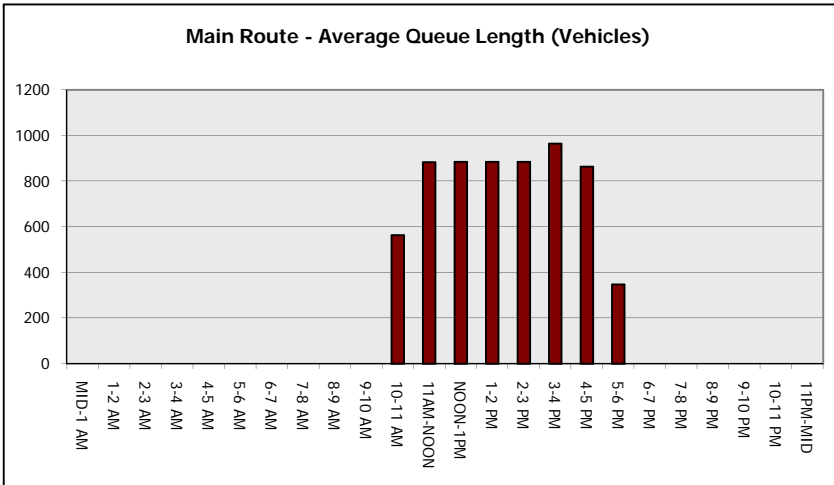
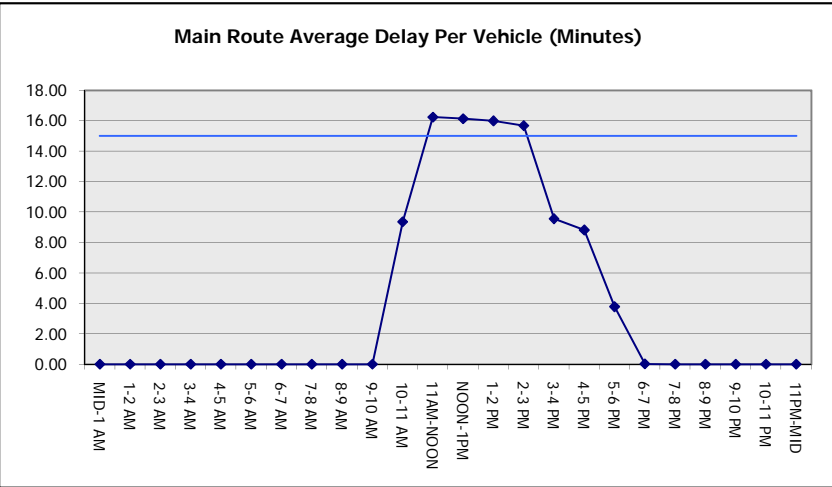
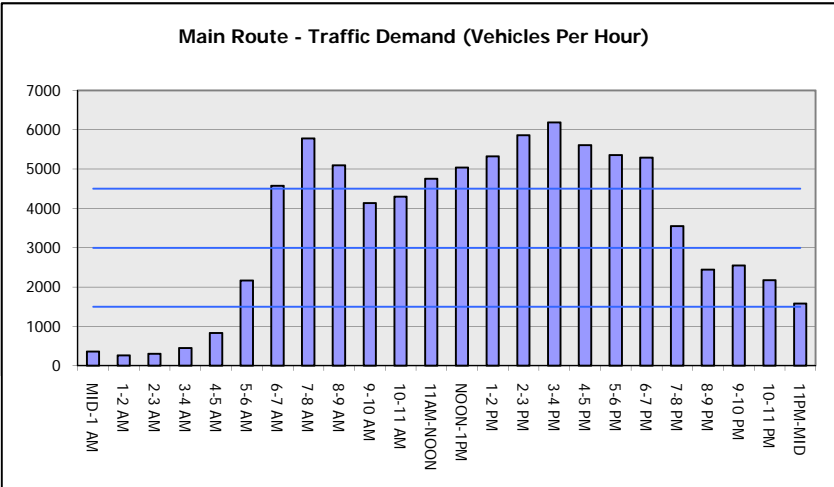
*Delays Exceeding User-Specified Maximum

**IH 94: CTH O TO STH 100 (WAUKESHA COUNTY)
OFF-PEAK DAY CLOSURE
NO DIVERSION ROUTE (MAX QUEUE METHOD)**

OCTOBER
Analyzed for 2009
Construction Season

GRAPHICAL REPRESENTATION OF TRAFFIC MODEL INPUT AND OUTPUT

FRIDAY WESTBOUND DIRECTION



IH 94: CTH O TO STH 100 (WAUKESHA COUNTY) OFF-PEAK DAY CLOSURE NO DIVERSION ROUTE (MAX QUEUE METHOD)	OCTOBER
	Analyzed for 2009 Construction Season

SUMMARY OF TRAFFIC MODEL OUTPUT

FRIDAY EASTBOUND DIRECTION

TIME OF DAY	FLOWS AND CAPACITY IN VEH/HR						AVERAGE SPEEDS IN MPH			
	MAIN ROUTE		SITE CAPA CITY	FLOW		AV.DEL PER VEH (MINS)	AVERAGE QUEUE (VEH)	MAIN ROUTE		SITE
	DEMAND FLOW	PCT HEAVY		MAIN ROUTE	'DIVER TED'			WITHOUT WORK ZONE	WITH WORK ZONE	
MID-1 AM	312	0.0	OFF	312	0	0.00	0	70.2	70.2	70.2
1-2 AM	223	0.0	OFF	223	0	0.00	0	70.2	70.2	70.2
2-3 AM	264	0.0	OFF	264	0	0.00	0	70.2	70.2	70.2
3-4 AM	402	0.0	OFF	402	0	0.00	0	70.2	70.2	70.2
4-5 AM	711	0.0	OFF	711	0	0.00	0	69.9	69.9	69.9
5-6 AM	2226	0.0	OFF	2226	0	0.00	0	67.9	67.9	67.9
6-7 AM	5331	0.0	OFF	5331	0	0.00	0	54.5	54.5	54.5
7-8 AM	6102	0.0	OFF	6102	0	0.00	0	49.2	49.2	49.2
8-9 AM	5154	0.0	OFF	5154	0	0.00	0	55.6	55.6	55.6
9-10 AM	4412	0.0	OFF	4412	0	0.00	0	60.7	60.7	60.7
10-11 AM	4082	0.0	2999	3964	118	8.59+	521	63.0	17.1	37.3
11AM-NOON	4440	0.0	2999	2916	1524	16.26+	876	60.5	11.6	37.3
NOON-1PM	4689	0.0	2999	3003	1686	16.30+	884	58.8	11.5	37.3
1-2 PM	4845	0.0	3000	3000	1845	16.23+	884	57.8	11.5	37.3
2-3 PM	5593	0.0	3000	3000	2593	15.84+	884	52.7	11.5	37.3
3-4 PM	5942	0.0	OFF	5942	0	8.56	852	50.2	15.2	15.2
4-5 PM	5705	0.0	OFF	5705	0	6.90	676	51.9	17.7	17.7
5-6 PM	5445	0.0	OFF	5445	0	2.77	251	53.7	29.8	29.8
6-7 PM	4751	0.0	OFF	4751	0	0.00	0	58.4	58.4	58.4
7-8 PM	3729	0.0	OFF	3729	0	0.00	0	65.4	65.4	65.4
8-9 PM	2843	0.0	OFF	2843	0	0.00	0	67.2	67.2	67.2
9-10 PM	2872	0.0	OFF	2872	0	0.00	0	67.2	67.2	67.2
10-11 PM	2430	0.0	OFF	2430	0	0.00	0	67.7	67.7	67.7
11PM-MID	1737	0.0	OFF	1737	0	0.00	0	68.6	68.6	68.6

"OFF" INDICATES NO ROAD WORK (ALL LANES OPEN TO TRAFFIC)

+ INDICATES QUEUEING EXCEEDS USER-SPECIFIED MAXIMUM LIMIT

----- SITE BREAKDOWN DELAYS -----	
BREAKDOWN DURATION (MINS)	0
RANGE OF QUEUE DELAY - MIN (VEH-H) MAX	0.0
AV BREAKDOWNS PER DAY	0.00
AV QUEUE DELAY/DAY (VEH-H)	0.0
AV TOTAL DELAY/DAY (VEH-H)	0.0

----- SITE ACCIDENT DELAYS -----	
BREAKDOWN DURATION (MINS)	0
RANGE OF QUEUE DELAY - MIN (VEH-H) MAX	0
AV BREAKDOWNS PER DAY	0
AV QUEUE DELAY/DAY (VEH-H)	0
AV TOTAL DELAY/DAY (VEH-H)	0

AVERAGE ACCIDENT NUMBERS (PIA/DAY)	
MAIN ROUTE WITHOUT WORKS	0.0416
MAIN ROUTE WITH WORKS	0.0367
'DIVERSION'	0.0089

PIA: Personal Injury Accidents

ECONOMIC IMPACT ON ROAD USERS	
ROAD USER COSTS PER DAY	\$78,151
CONGESTED HOURS PER DAY*	5

*Delays Exceeding User-Specified Maximum

**IH 94: CTH 0 TO STH 100 (WAUKESHA COUNTY)
OFF-PEAK DAY CLOSURE
NO DIVERSION ROUTE (MAX QUEUE METHOD)**

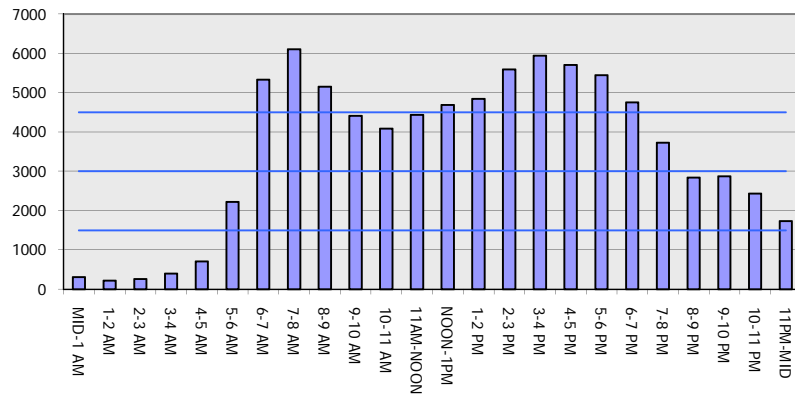
OCTOBER

Analyzed for 2009
Construction Season

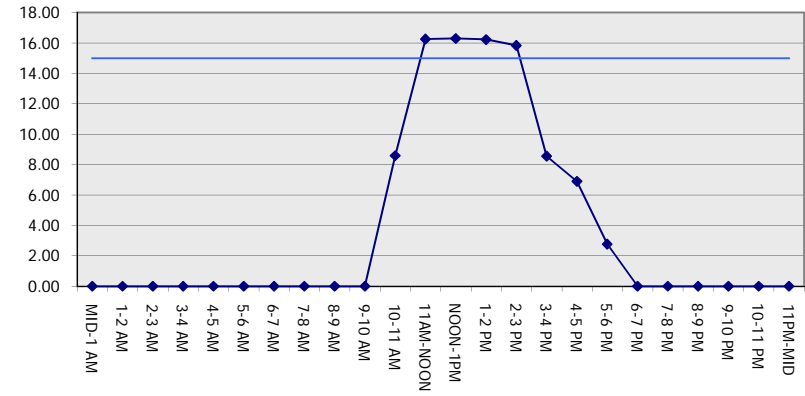
GRAPHICAL REPRESENTATION OF TRAFFIC MODEL INPUT AND OUTPUT

FRIDAY EASTBOUND DIRECTION

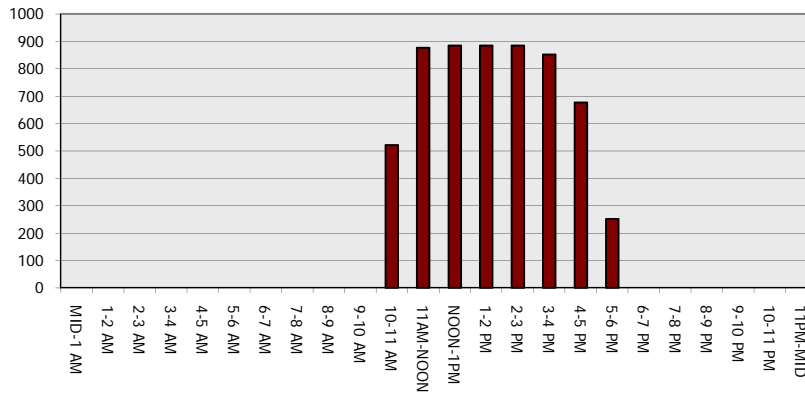
Main Route - Traffic Demand (Vehicles Per Hour)



Main Route Average Delay Per Vehicle (Minutes)



Main Route - Average Queue Length (Vehicles)



Main Route - Average Speed (MPH)

