

IH 94: CTH O TO STH 100 (WAUKESHA COUNTY) OFF-PEAK DAY CLOSURE NO DIVERSION ROUTE (MAX QUEUE METHOD)	AUGUST
	Analyzed for 2009 Construction Season

SUMMARY OF TRAFFIC MODEL OUTPUT

SUNDAY WESTBOUND DIRECTION

TIME OF DAY	FLOWS AND CAPACITY IN VEH/HR						AVERAGE SPEEDS IN MPH				
	MAIN ROUTE		SITE CAPA CITY	FLOW		AV.DEL PER VEH (MINS)	AVERAGE QUEUE (VEH)	MAIN ROUTE		SITE	
	DEMAND FLOW	PCT HEAVY		MAIN ROUTE	'DIVER TED'			WITHOUT WORK ZONE	WITH WORK ZONE		
MID-1 AM	950	0.0	OFF	950	0	0.00	0	69.6	69.6	69.6	
1-2 AM	643	0.0	OFF	643	0	0.00	0	69.9	69.9	69.9	
2-3 AM	278	0.0	OFF	278	0	0.00	0	70.2	70.2	70.2	
3-4 AM	208	0.0	OFF	208	0	0.00	0	70.2	70.2	70.2	
4-5 AM	114	0.0	OFF	114	0	0.00	0	70.2	70.2	70.2	
5-6 AM	187	0.0	OFF	187	0	0.00	0	70.2	70.2	70.2	
6-7 AM	300	0.0	OFF	300	0	0.00	0	70.2	70.2	70.2	
7-8 AM	830	0.0	OFF	830	0	0.00	0	69.7	69.7	69.7	
8-9 AM	915	0.0	OFF	915	0	0.00	0	69.6	69.6	69.6	
9-10 AM	1953	0.0	3000	1953	0	0.34	0	68.3	60.8	49.7	
10-11 AM	2382	0.0	3000	2382	0	0.33	0	67.8	60.5	49.7	
11AM-NOON	2688	0.0	2999	2688	0	0.52	0	67.4	56.7	42.9	
NOON-1PM	3665	0.0	2999	3665	0	4.99	296	65.8	23.8	37.3	
1-2 PM	3841	0.0	2999	3186	655	15.66+	830	64.6	11.8	37.3	
2-3 PM	3616	0.0	3000	3000	616	16.11+	850	66.1	11.7	37.3	
3-4 PM	3695	0.0	3000	3000	695	16.09+	850	65.6	11.7	37.3	
4-5 PM	3748	0.0	3000	3000	748	16.08+	850	65.3	11.7	37.3	
5-6 PM	3545	0.0	3000	3000	545	16.11+	849	66.3	11.7	37.3	
6-7 PM	3208	0.0	3000	2999	209	16.11+	848	66.8	11.7	37.3	
7-8 PM	2316	0.0	OFF	2316	0	1.02	97	67.9	49.4	49.4	
8-9 PM	1702	0.0	OFF	1702	0	0.00	0	68.6	68.6	68.6	
9-10 PM	1359	0.0	OFF	1359	0	0.00	0	69.1	69.1	69.1	
10-11 PM	1202	0.0	OFF	1202	0	0.00	0	69.2	69.2	69.2	
11PM-MID	576	0.0	OFF	576	0	0.00	0	70.0	70.0	70.0	

"OFF" INDICATES NO ROAD WORK (ALL LANES OPEN TO TRAFFIC)

+ INDICATES QUEUEING EXCEEDS USER-SPECIFIED MAXIMUM LIMIT

----- SITE BREAKDOWN DELAYS -----	
BREAKDOWN DURATION (MINS)	0
RANGE OF QUEUE DELAY - MIN (VEH-H) MAX	0.0
AV BREAKDOWNS PER DAY	0.00
AV QUEUE DELAY/DAY (VEH-H)	0.0
AV TOTAL DELAY/DAY (VEH-H)	0.0

----- SITE ACCIDENT DELAYS -----	
BREAKDOWN DURATION (MINS)	0
RANGE OF QUEUE DELAY - MIN (VEH-H) MAX	0
AV BREAKDOWNS PER DAY	0
AV QUEUE DELAY/DAY (VEH-H)	0
AV TOTAL DELAY/DAY (VEH-H)	0

AVERAGE ACCIDENT NUMBERS (PIA/DAY)	
MAIN ROUTE WITHOUT WORKS	0.0217
MAIN ROUTE WITH WORKS	0.0181
'DIVERSION'	0.0040
<small>PIA: Personal Injury Accidents</small>	
IMPACTS ON ROAD USERS	
ROAD USER COSTS PER DAY	\$101,268
CONGESTED HOURS PER DAY*	6

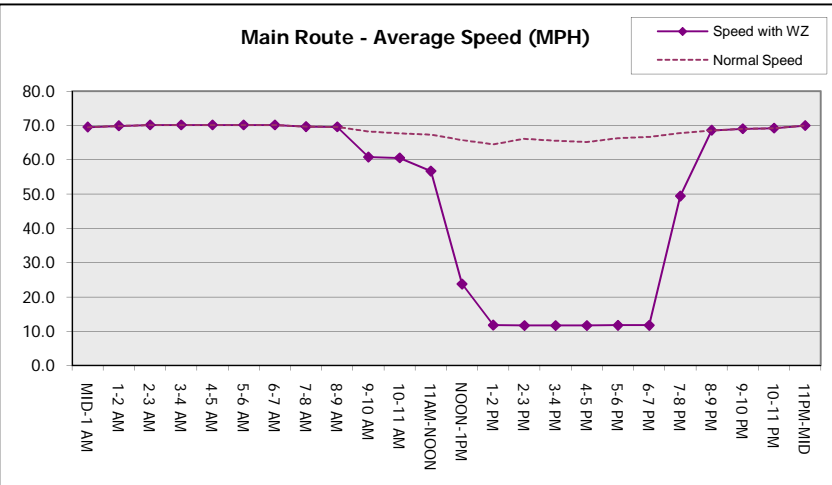
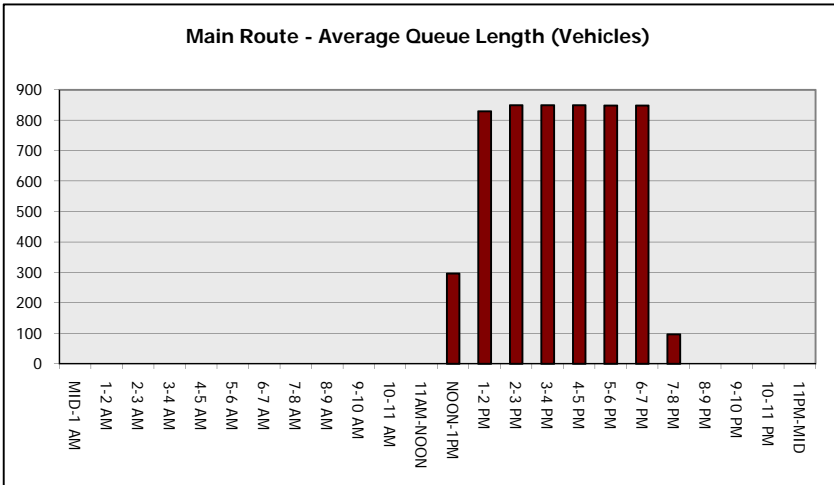
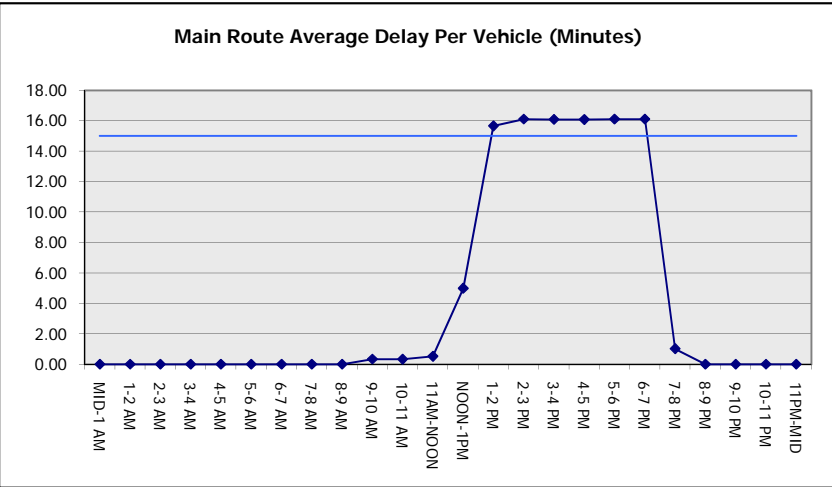
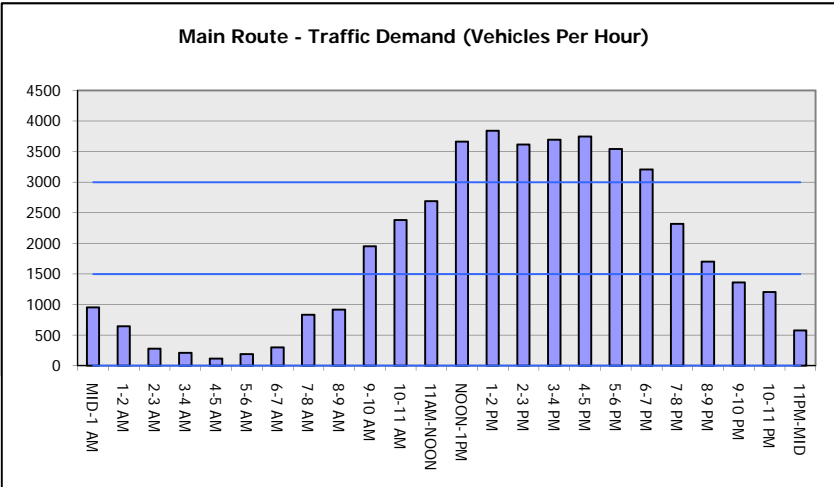
*Delays Exceeding User-Specified Maximum

**IH 94: CTH O TO STH 100 (WAUKESHA COUNTY)
OFF-PEAK DAY CLOSURE
NO DIVERSION ROUTE (MAX QUEUE METHOD)**

AUGUST
Analyzed for 2009
Construction Season

GRAPHICAL REPRESENTATION OF TRAFFIC MODEL INPUT AND OUTPUT

SUNDAY WESTBOUND DIRECTION



IH 94: CTH O TO STH 100 (WAUKESHA COUNTY) OFF-PEAK DAY CLOSURE NO DIVERSION ROUTE (MAX QUEUE METHOD)	AUGUST
	Analyzed for 2009 Construction Season

SUMMARY OF TRAFFIC MODEL OUTPUT

SUNDAY EASTBOUND DIRECTION

TIME OF DAY	FLOWS AND CAPACITY IN VEH/HR							AVERAGE SPEEDS IN MPH		
	MAIN ROUTE		SITE CAPA CITY	FLOW		AV.DEL PER VEH (MINS)	AVERAGE QUEUE (VEH)	MAIN ROUTE		SITE
	DEMAND FLOW	PCT HEAVY		MAIN ROUTE	'DIVER TED'			WITHOUT WORK ZONE	WITH WORK ZONE	
MID-1 AM	653	0.0	OFF	653	0	0.00	0	69.9	69.9	69.9
1-2 AM	329	0.0	OFF	329	0	0.00	0	70.2	70.2	70.2
2-3 AM	154	0.0	OFF	154	0	0.00	0	70.2	70.2	70.2
3-4 AM	141	0.0	OFF	141	0	0.00	0	70.2	70.2	70.2
4-5 AM	108	0.0	OFF	108	0	0.00	0	70.2	70.2	70.2
5-6 AM	146	0.0	OFF	146	0	0.00	0	70.2	70.2	70.2
6-7 AM	271	0.0	OFF	271	0	0.00	0	70.2	70.2	70.2
7-8 AM	735	0.0	OFF	735	0	0.00	0	69.8	69.8	69.8
8-9 AM	909	0.0	OFF	909	0	0.00	0	69.6	69.6	69.6
9-10 AM	1983	0.0	3000	1983	0	0.33	0	68.2	60.8	49.7
10-11 AM	2550	0.0	2999	2550	0	0.43	0	67.6	58.4	45.9
11AM-NOON	3146	0.0	2999	3146	0	1.30	38	66.8	45.6	37.4
NOON-1PM	3846	0.0	3000	3846	1	9.58+	552	64.6	15.9	37.3
1-2 PM	3929	0.0	3000	2894	1035	16.27+	865	64.0	11.6	37.3
2-3 PM	3765	0.0	2999	2987	778	16.07+	851	65.1	11.7	37.3
3-4 PM	3736	0.0	2999	2991	744	16.08+	850	65.3	11.7	37.3
4-5 PM	3981	0.0	2999	2994	987	16.01+	852	63.7	11.7	37.3
5-6 PM	3830	0.0	2999	2996	834	16.05+	851	64.7	11.7	37.3
6-7 PM	3637	0.0	2999	2997	640	16.11+	850	66.0	11.7	37.3
7-8 PM	2727	0.0	OFF	2727	0	1.17	112	67.3	47.3	47.3
8-9 PM	2211	0.0	OFF	2211	0	0.00	0	68.0	68.0	68.0
9-10 PM	1737	0.0	OFF	1737	0	0.00	0	68.6	68.6	68.6
10-11 PM	1352	0.0	OFF	1352	0	0.00	0	69.1	69.1	69.1
11PM-MID	525	0.0	OFF	525	0	0.00	0	70.1	70.1	70.1

"OFF" INDICATES NO ROAD WORK (ALL LANES OPEN TO TRAFFIC)

+ INDICATES QUEUEING EXCEEDS USER-SPECIFIED MAXIMUM LIMIT

----- SITE BREAKDOWN DELAYS -----	
BREAKDOWN DURATION (MINS)	0
RANGE OF QUEUE DELAY - MIN (VEH-H) MAX	0.0
AV BREAKDOWNS PER DAY	0.00
AV QUEUE DELAY/DAY (VEH-H)	0.0
AV TOTAL DELAY/DAY (VEH-H)	0.0

----- SITE ACCIDENT DELAYS -----	
BREAKDOWN DURATION (MINS)	0
RANGE OF QUEUE DELAY - MIN (VEH-H) MAX	0
AV BREAKDOWNS PER DAY	0
AV QUEUE DELAY/DAY (VEH-H)	0
AV TOTAL DELAY/DAY (VEH-H)	0

AVERAGE ACCIDENT NUMBERS (PIA/DAY)	
MAIN ROUTE WITHOUT WORKS	0.0229
MAIN ROUTE WITH WORKS	0.0185
'DIVERSION'	0.0057

PIA: Personal Injury Accidents

ECONOMIC IMPACT ON ROAD USERS	
ROAD USER COSTS PER DAY	\$113,233
CONGESTED HOURS PER DAY*	7

*Delays Exceeding User-Specified Maximum

**IH 94: CTH O TO STH 100 (WAUKESHA COUNTY)
OFF-PEAK DAY CLOSURE
NO DIVERSION ROUTE (MAX QUEUE METHOD)**

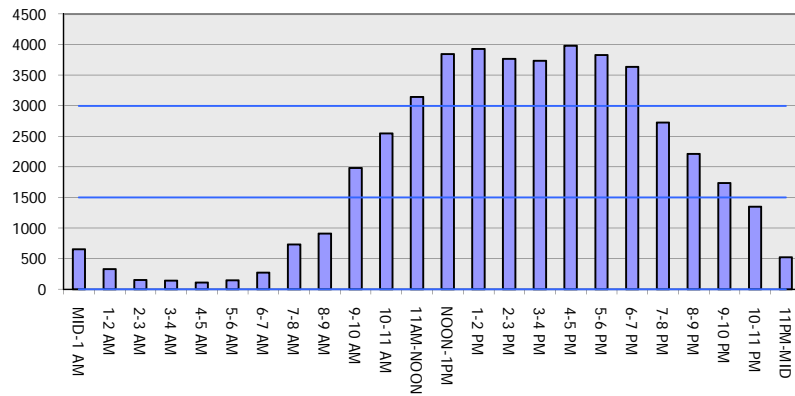
AUGUST

Analyzed for 2009
Construction Season

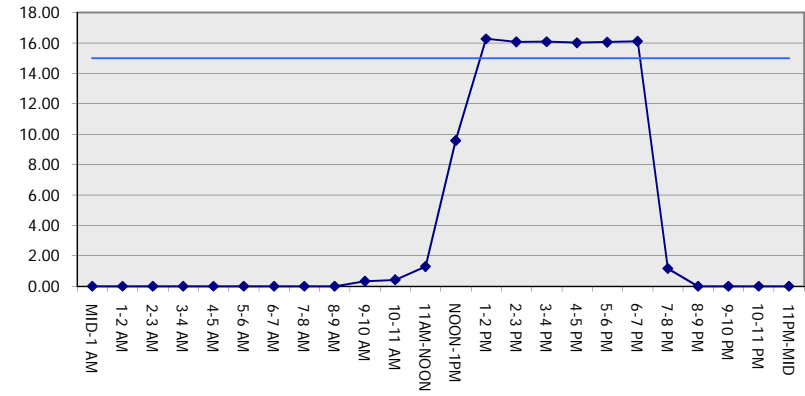
GRAPHICAL REPRESENTATION OF TRAFFIC MODEL INPUT AND OUTPUT

SUNDAY EASTBOUND DIRECTION

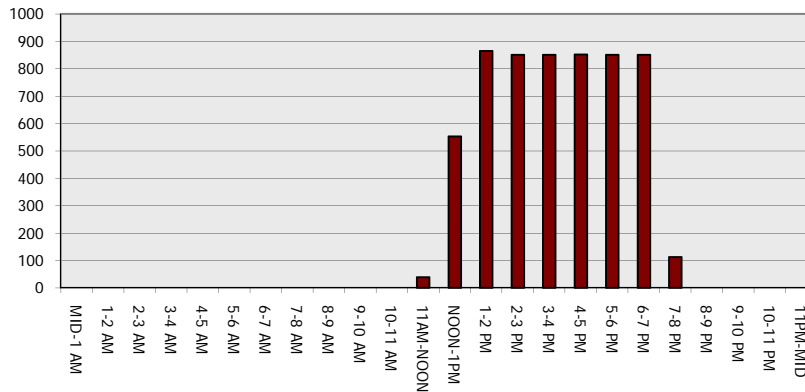
Main Route - Traffic Demand (Vehicles Per Hour)



Main Route Average Delay Per Vehicle (Minutes)



Main Route - Average Queue Length (Vehicles)



Main Route - Average Speed (MPH)

