

<b>IH 94: STH 100/RYAN RD TO STH 20 (MILWAUKEE AND RACINE COUNTIES)</b> <b>OFF-PEAK DAY 2 LANE CLOSURE</b> <b>NO DIVERSION ROUTE (MAX QUEUE METHOD)</b>	<b>OCTOBER</b> Analyzed for 2009 Construction Season
---	--

**SUMMARY OF TRAFFIC MODEL OUTPUT**

SUNDAY WESTBOUND DIRECTION

TIME OF DAY	FLOWS AND CAPACITY IN VEH/HR						AVERAGE SPEEDS IN MPH			
	MAIN ROUTE		SITE CAPA CITY	FLOW		AV.DEL PER VEH (MINS)	AVERAGE QUEUE (VEH)	MAIN ROUTE		SITE
	DEMAND FLOW	PCT HEAVY		MAIN ROUTE	'DIVER TED'			WITHOUT WORK ZONE	WITH WORK ZONE	
MID-1 AM	739	0.0	OFF	739	0	0.00	0	70.2	70.2	70.2
1-2 AM	464	0.0	OFF	464	0	0.00	0	70.2	70.2	70.2
2-3 AM	363	0.0	OFF	363	0	0.00	0	70.2	70.2	70.2
3-4 AM	258	0.0	OFF	258	0	0.00	0	70.2	70.2	70.2
4-5 AM	267	0.0	OFF	267	0	0.00	0	70.2	70.2	70.2
5-6 AM	407	0.0	OFF	407	0	0.00	0	70.2	70.2	70.2
6-7 AM	588	0.0	OFF	588	0	0.00	0	70.2	70.2	70.2
7-8 AM	887	0.0	OFF	887	0	0.00	0	70.2	70.2	70.2
8-9 AM	1390	0.0	OFF	1390	0	0.00	0	70.2	70.2	70.2
9-10 AM	1835	0.0	1499	1835	0	5.49	137	69.7	43.2	32.5
10-11 AM	2373	0.0	1499	1500	873	16.18+	399	69.1	24.7	32.5
11AM-NOON	2857	0.0	1500	1500	1357	16.10+	400	68.5	24.7	32.5
NOON-1PM	2979	0.0	1500	1500	1479	16.08+	400	68.3	24.7	32.5
1-2 PM	3045	0.0	1500	1500	1545	16.07+	400	68.2	24.7	32.5
2-3 PM	3048	0.0	1500	1500	1548	16.07+	400	68.2	24.7	32.5
3-4 PM	3035	0.0	1500	1500	1535	16.07+	400	68.2	24.7	32.5
4-5 PM	3111	0.0	1500	1500	1611	16.06+	400	68.2	24.7	32.5
5-6 PM	3021	0.0	1500	1500	1521	16.07+	400	68.3	24.7	32.5
6-7 PM	2784	0.0	1500	1500	1284	16.11+	400	68.6	24.7	32.5
7-8 PM	2478	0.0	OFF	2478	0	0.21	15	68.9	67.4	67.4
8-9 PM	1947	0.0	OFF	1947	0	0.00	0	69.6	69.6	69.6
9-10 PM	1553	0.0	OFF	1553	0	0.00	0	70.1	70.1	70.1
10-11 PM	1204	0.0	OFF	1204	0	0.00	0	70.2	70.2	70.2
11PM-MID	810	0.0	OFF	810	0	0.00	0	70.2	70.2	70.2

**"OFF" INDICATES NO ROAD WORK (ALL LANES OPEN TO TRAFFIC)**

**+ INDICATES QUEUEING EXCEEDS USER-SPECIFIED MAXIMUM LIMIT**

*----- SITE BREAKDOWN DELAYS -----*	
BREAKDOWN DURATION (MINS)	0
RANGE OF QUEUE DELAY - MIN (VEH-H) MAX	0.0
AV BREAKDOWNS PER DAY	0.00
AV QUEUE DELAY/DAY (VEH-H)	0.0
AV TOTAL DELAY/DAY (VEH-H)	0.0

*----- SITE ACCIDENT DELAYS -----*	
BREAKDOWN DURATION (MINS)	0
RANGE OF QUEUE DELAY - MIN (VEH-H) MAX	0
AV BREAKDOWNS PER DAY	0
AV QUEUE DELAY/DAY (VEH-H)	0
AV TOTAL DELAY/DAY (VEH-H)	0

AVERAGE ACCIDENT NUMBERS (PIA/DAY)	
MAIN ROUTE WITHOUT WORKS	0.0686
MAIN ROUTE WITH WORKS	0.0465
'DIVERSION'	0.0489
PIA: Personal Injury Accidents	
IMPACTS ON ROAD USERS	
ROAD USER COSTS PER DAY	\$119,599
CONGESTED HOURS PER DAY*	9

\*Delays Exceeding User-Specified Maximum

**IH 94: STH 100/RYAN RD TO STH 20 (MILWAUKEE AND RACINE COUNTIES)**  
**OFF-PEAK DAY 2 LANE CLOSURE**  
**NO DIVERSION ROUTE (MAX QUEUE METHOD)**

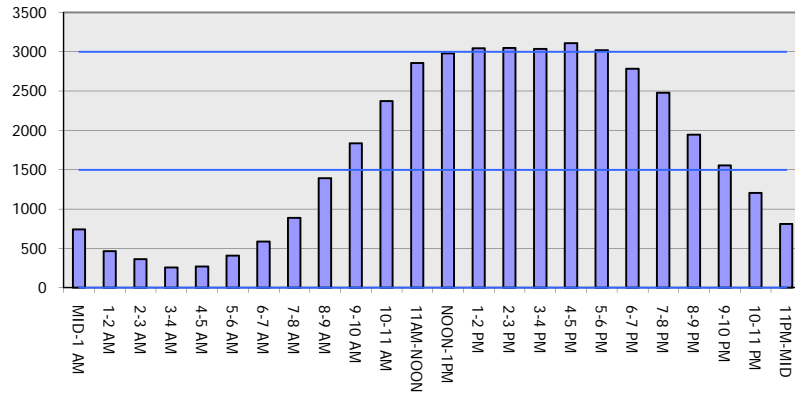
**OCTOBER**

Analyzed for 2009  
 Construction Season

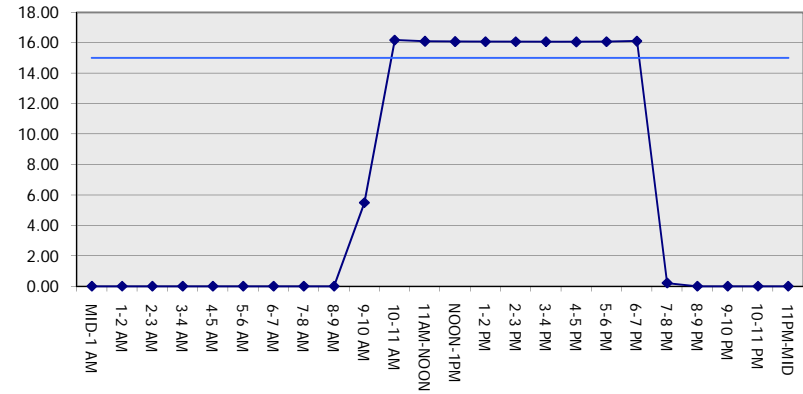
**GRAPHICAL REPRESENTATION OF TRAFFIC MODEL INPUT AND OUTPUT**

**SUNDAY WESTBOUND DIRECTION**

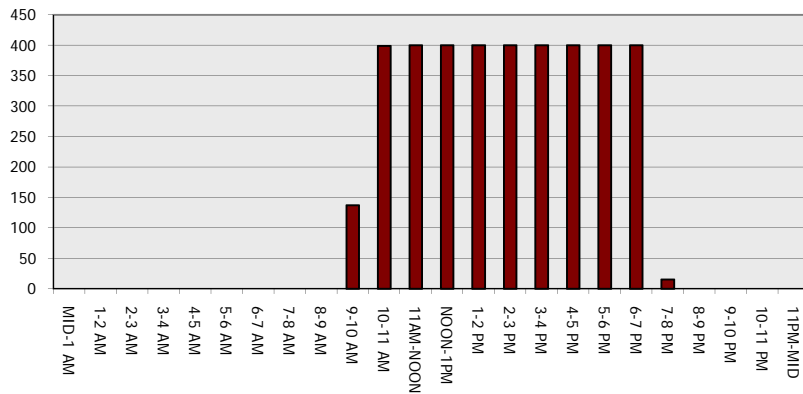
**Main Route - Traffic Demand (Vehicles Per Hour)**



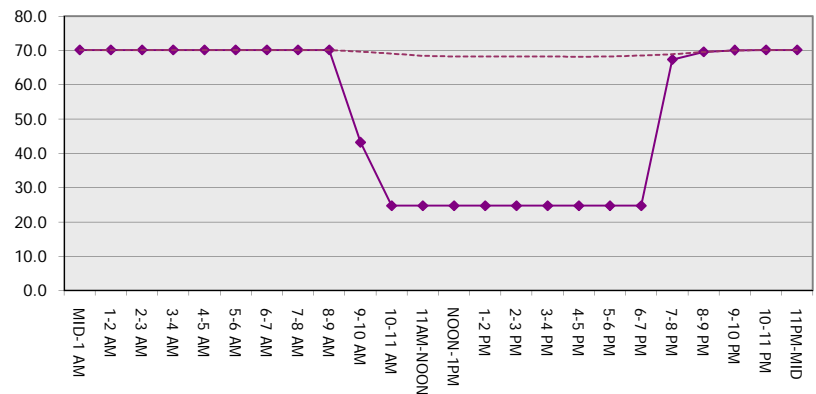
**Main Route Average Delay Per Vehicle (Minutes)**



**Main Route - Average Queue Length (Vehicles)**



**Main Route - Average Speed (MPH)**



<b>IH 94: STH 100/RYAN RD TO STH 20 (MILWAUKEE AND RACINE COUNTIES)</b> <b>OFF-PEAK DAY 2 LANE CLOSURE</b> <b>NO DIVERSION ROUTE (MAX QUEUE METHOD)</b>	<b>OCTOBER</b>
	Analyzed for 2009 Construction Season

**SUMMARY OF TRAFFIC MODEL OUTPUT**

SUNDAY EASTBOUND DIRECTION

TIME OF DAY	FLOWS AND CAPACITY IN VEH/HR						AVERAGE SPEEDS IN MPH			
	MAIN ROUTE		SITE CAPA CITY	FLOW		AV.DEL PER VEH (MINS)	AVERAGE QUEUE (VEH)	MAIN ROUTE		SITE
	DEMAND FLOW	PCT HEAVY		MAIN ROUTE	'DIVER TED'			WITHOUT WORK ZONE	WITH WORK ZONE	
MID-1 AM	686	0.0	OFF	686	0	0.00	0	70.2	70.2	70.2
1-2 AM	471	0.0	OFF	471	0	0.00	0	70.2	70.2	70.2
2-3 AM	432	0.0	OFF	432	0	0.00	0	70.2	70.2	70.2
3-4 AM	300	0.0	OFF	300	0	0.00	0	70.2	70.2	70.2
4-5 AM	271	0.0	OFF	271	0	0.00	0	70.2	70.2	70.2
5-6 AM	350	0.0	OFF	350	0	0.00	0	70.2	70.2	70.2
6-7 AM	544	0.0	OFF	544	0	0.00	0	70.2	70.2	70.2
7-8 AM	833	0.0	OFF	833	0	0.00	0	70.2	70.2	70.2
8-9 AM	1347	0.0	OFF	1347	0	0.00	0	70.2	70.2	70.2
9-10 AM	2113	0.0	1499	1967	147	8.68+	236	69.4	35.3	32.5
10-11 AM	2763	0.0	1500	1500	1263	16.12+	400	68.6	24.7	32.5
11AM-NOON	3077	0.0	1500	1500	1577	16.07+	400	68.2	24.7	32.5
NOON-1PM	3492	0.0	1500	1500	1992	16.00+	400	67.7	24.7	32.5
1-2 PM	3698	0.0	1500	1500	2198	15.89+	400	66.9	24.7	32.5
2-3 PM	3736	0.0	1500	1500	2236	15.85+	400	66.6	24.7	32.5
3-4 PM	3671	0.0	1500	1500	2171	15.91+	400	67.1	24.7	32.5
4-5 PM	3650	0.0	1500	1500	2150	15.93+	400	67.2	24.7	32.5
5-6 PM	3291	0.0	1500	1500	1791	16.03+	400	67.9	24.7	32.5
6-7 PM	2813	0.0	1500	1500	1313	16.11+	400	68.6	24.7	32.5
7-8 PM	2440	0.0	OFF	2440	0	0.38	30	69.0	66.2	66.2
8-9 PM	1791	0.0	OFF	1791	0	0.00	0	69.8	69.8	69.8
9-10 PM	1337	0.0	OFF	1337	0	0.00	0	70.2	70.2	70.2
10-11 PM	920	0.0	OFF	920	0	0.00	0	70.2	70.2	70.2
11PM-MID	688	0.0	OFF	688	0	0.00	0	70.2	70.2	70.2

"OFF" INDICATES NO ROAD WORK (ALL LANES OPEN TO TRAFFIC)

+ INDICATES QUEUEING EXCEEDS USER-SPECIFIED MAXIMUM LIMIT

BREAKDOWN DURATION (MINS)	0
RANGE OF QUEUE DELAY - MIN (VEH-H) MAX	0.0
AV BREAKDOWNS PER DAY	0.00
AV QUEUE DELAY/DAY (VEH-H)	0.0
AV TOTAL DELAY/DAY (VEH-H)	0.0

BREAKDOWN DURATION (MINS)	0
RANGE OF QUEUE DELAY - MIN (VEH-H) MAX	0
AV BREAKDOWNS PER DAY	0
AV QUEUE DELAY/DAY (VEH-H)	0
AV TOTAL DELAY/DAY (VEH-H)	0

MAIN ROUTE WITHOUT WORKS	0.0740
MAIN ROUTE WITH WORKS	0.0451
'DIVERSION'	0.0646

PIA: Personal Injury Accidents

ROAD USER COSTS PER DAY	\$138,602
CONGESTED HOURS PER DAY*	10

\*Delays Exceeding User-Specified Maximum

**IH 94: STH 100/RYAN RD TO STH 20 (MILWAUKEE AND RACINE COUNTIES)**  
**OFF-PEAK DAY 2 LANE CLOSURE**  
**NO DIVERSION ROUTE (MAX QUEUE METHOD)**

**OCTOBER**

Analyzed for 2009  
 Construction Season

**GRAPHICAL REPRESENTATION OF TRAFFIC MODEL INPUT AND OUTPUT**  
**SUNDAY EASTBOUND DIRECTION**

