

IH 94: STH 100/RYAN RD TO STH 20 (MILWAUKEE AND RACINE COUNTIES) OFF-PEAK DAY CLOSURE NO DIVERSION ROUTE (MAX QUEUE METHOD)	OCTOBER
	Analyzed for 2009 Construction Season

SUMMARY OF TRAFFIC MODEL OUTPUT

SUNDAY WESTBOUND DIRECTION

TIME OF DAY	FLOWS AND CAPACITY IN VEH/HR						AVERAGE SPEEDS IN MPH			
	MAIN ROUTE		SITE CAPA CITY	FLOW		AV.DEL PER VEH (MINS)	AVERAGE QUEUE (VEH)	MAIN ROUTE		SITE
	DEMAND FLOW	PCT HEAVY		MAIN ROUTE	'DIVER TED'			WITHOUT WORK ZONE	WITH WORK ZONE	
MID-1 AM	739	0.0	OFF	739	0	0.00	0	70.2	70.2	70.2
1-2 AM	464	0.0	OFF	464	0	0.00	0	70.2	70.2	70.2
2-3 AM	363	0.0	OFF	363	0	0.00	0	70.2	70.2	70.2
3-4 AM	258	0.0	OFF	258	0	0.00	0	70.2	70.2	70.2
4-5 AM	267	0.0	OFF	267	0	0.00	0	70.2	70.2	70.2
5-6 AM	407	0.0	OFF	407	0	0.00	0	70.2	70.2	70.2
6-7 AM	588	0.0	OFF	588	0	0.00	0	70.2	70.2	70.2
7-8 AM	887	0.0	OFF	887	0	0.00	0	70.2	70.2	70.2
8-9 AM	1390	0.0	OFF	1390	0	0.00	0	70.2	70.2	70.2
9-10 AM	1835	0.0	3000	1835	0	0.35	0	69.7	67.1	49.7
10-11 AM	2373	0.0	3000	2373	0	0.35	0	69.1	66.5	49.4
11AM-NOON	2857	0.0	2999	2857	0	0.67	0	68.5	63.8	39.2
NOON-1PM	2979	0.0	2999	2979	0	0.75	0	68.3	63.1	37.2
1-2 PM	3045	0.0	3000	3045	0	1.15	21	68.2	60.7	36.9
2-3 PM	3048	0.0	3000	3048	0	2.04	70	68.2	55.8	36.9
3-4 PM	3035	0.0	2999	3035	0	2.75	109	68.2	52.5	36.9
4-5 PM	3111	0.0	3000	3111	0	4.09	184	68.2	47.1	36.9
5-6 PM	3021	0.0	2999	3021	0	5.50	260	68.3	42.6	36.9
6-7 PM	2784	0.0	2999	2784	0	3.74	169	68.6	48.6	37.8
7-8 PM	2478	0.0	OFF	2478	0	0.01	0	68.9	68.9	68.9
8-9 PM	1947	0.0	OFF	1947	0	0.00	0	69.6	69.6	69.6
9-10 PM	1553	0.0	OFF	1553	0	0.00	0	70.1	70.1	70.1
10-11 PM	1204	0.0	OFF	1204	0	0.00	0	70.2	70.2	70.2
11PM-MID	810	0.0	OFF	810	0	0.00	0	70.2	70.2	70.2

"OFF" INDICATES NO ROAD WORK (ALL LANES OPEN TO TRAFFIC)

----- SITE BREAKDOWN DELAYS -----	
BREAKDOWN DURATION (MINS)	0
RANGE OF QUEUE DELAY - MIN (VEH-H) MAX	0.0
AV BREAKDOWNS PER DAY	0.00
AV QUEUE DELAY/DAY (VEH-H)	0.0
AV TOTAL DELAY/DAY (VEH-H)	0.0

----- SITE ACCIDENT DELAYS -----	
BREAKDOWN DURATION (MINS)	0
RANGE OF QUEUE DELAY - MIN (VEH-H) MAX	0
AV BREAKDOWNS PER DAY	0
AV QUEUE DELAY/DAY (VEH-H)	0
AV TOTAL DELAY/DAY (VEH-H)	0

AVERAGE ACCIDENT NUMBERS (PIA/DAY)	
MAIN ROUTE WITHOUT WORKS	0.0686
MAIN ROUTE WITH WORKS	0.0667
'DIVERSION'	0.0000
PIA: Personal Injury Accidents	
IMPACTS ON ROAD USERS	
ROAD USER COSTS PER DAY	\$17,230
CONGESTED HOURS PER DAY*	0

*Delays Exceeding User-Specified Maximum

IH 94: STH 100/RYAN RD TO STH 20 (MILWAUKEE AND RACINE COUNTIES)
OFF-PEAK DAY CLOSURE
NO DIVERSION ROUTE (MAX QUEUE METHOD)

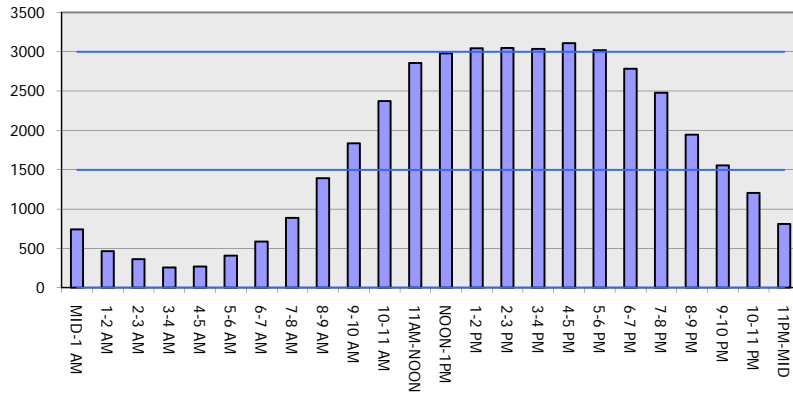
OCTOBER

Analyzed for 2009
 Construction Season

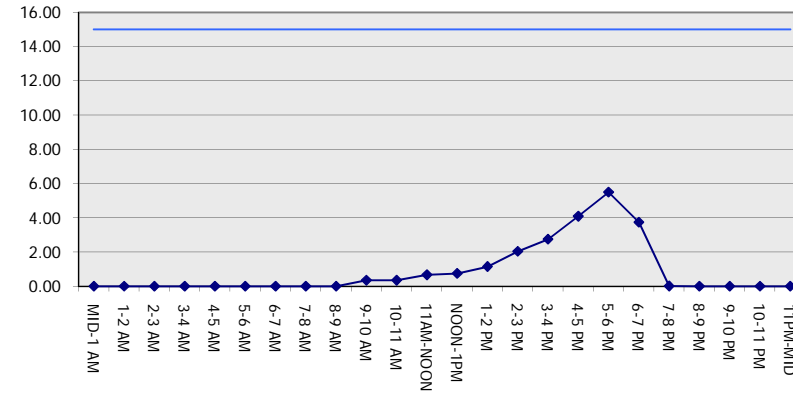
GRAPHICAL REPRESENTATION OF TRAFFIC MODEL INPUT AND OUTPUT

SUNDAY WESTBOUND DIRECTION

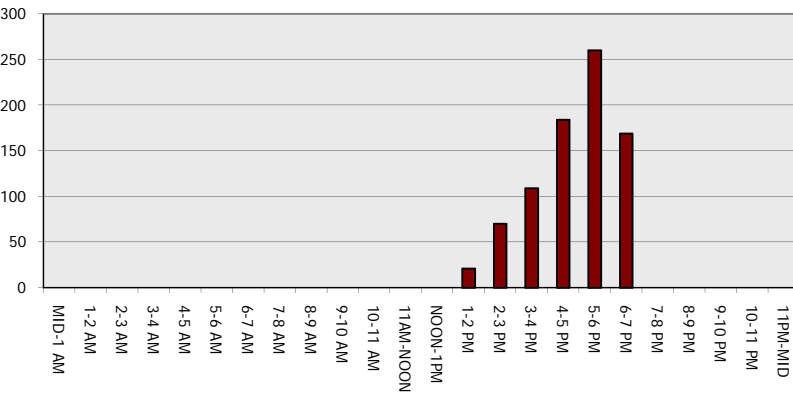
Main Route - Traffic Demand (Vehicles Per Hour)



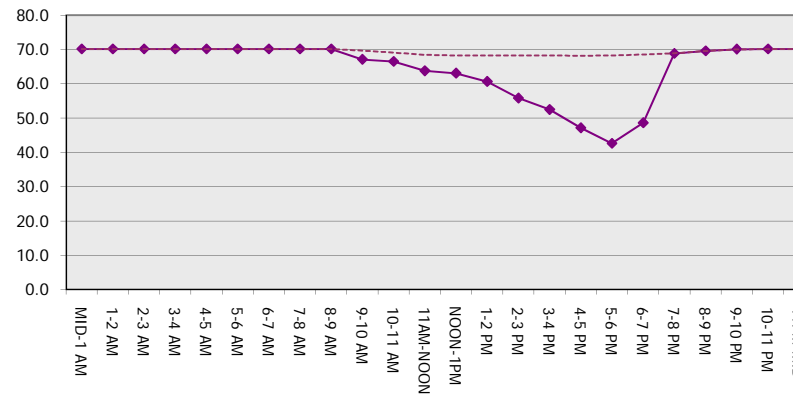
Main Route Average Delay Per Vehicle (Minutes)



Main Route - Average Queue Length (Vehicles)



Main Route - Average Speed (MPH)



IH 94: STH 100/RYAN RD TO STH 20 (MILWAUKEE AND RACINE COUNTIES) OFF-PEAK DAY CLOSURE NO DIVERSION ROUTE (MAX QUEUE METHOD)	OCTOBER
	Analyzed for 2009 Construction Season

SUMMARY OF TRAFFIC MODEL OUTPUT

SUNDAY EASTBOUND DIRECTION

TIME OF DAY	FLOWS AND CAPACITY IN VEH/HR						AVERAGE SPEEDS IN MPH			
	MAIN ROUTE		SITE CAPA CITY	FLOW		AV.DEL PER VEH (MINS)	AVERAGE QUEUE (VEH)	MAIN ROUTE		SITE
	DEMAND FLOW	PCT HEAVY		MAIN ROUTE	'DIVER TED'			WITHOUT WORK ZONE	WITH WORK ZONE	
MID-1 AM	686	0.0	OFF	686	0	0.00	0	70.2	70.2	70.2
1-2 AM	471	0.0	OFF	471	0	0.00	0	70.2	70.2	70.2
2-3 AM	432	0.0	OFF	432	0	0.00	0	70.2	70.2	70.2
3-4 AM	300	0.0	OFF	300	0	0.00	0	70.2	70.2	70.2
4-5 AM	271	0.0	OFF	271	0	0.00	0	70.2	70.2	70.2
5-6 AM	350	0.0	OFF	350	0	0.00	0	70.2	70.2	70.2
6-7 AM	544	0.0	OFF	544	0	0.00	0	70.2	70.2	70.2
7-8 AM	833	0.0	OFF	833	0	0.00	0	70.2	70.2	70.2
8-9 AM	1347	0.0	OFF	1347	0	0.00	0	70.2	70.2	70.2
9-10 AM	2113	0.0	3000	2113	0	0.35	0	69.4	66.8	49.7
10-11 AM	2763	0.0	2999	2763	0	0.61	0	68.6	64.3	40.9
11AM-NOON	3077	0.0	2999	3077	0	1.12	20	68.2	60.8	36.9
NOON-1PM	3492	0.0	3000	3492	0	6.00	310	67.7	41.0	36.9
1-2 PM	3698	0.0	3000	3274	423	14.44+	764	66.9	26.3	36.9
2-3 PM	3736	0.0	2999	3000	736	15.08+	799	66.6	25.5	36.9
3-4 PM	3671	0.0	3000	3000	671	15.14+	800	67.1	25.5	36.9
4-5 PM	3650	0.0	3000	3000	650	15.16+	800	67.2	25.5	36.9
5-6 PM	3291	0.0	2999	2956	335	15.17+	795	67.9	25.6	36.9
6-7 PM	2813	0.0	2999	2813	0	14.18+	738	68.6	26.8	36.9
7-8 PM	2440	0.0	OFF	2440	0	0.64	53	69.0	64.5	64.5
8-9 PM	1791	0.0	OFF	1791	0	0.00	0	69.8	69.8	69.8
9-10 PM	1337	0.0	OFF	1337	0	0.00	0	70.2	70.2	70.2
10-11 PM	920	0.0	OFF	920	0	0.00	0	70.2	70.2	70.2
11PM-MID	688	0.0	OFF	688	0	0.00	0	70.2	70.2	70.2

"OFF" INDICATES NO ROAD WORK (ALL LANES OPEN TO TRAFFIC)

+ INDICATES QUEUEING EXCEEDS USER-SPECIFIED MAXIMUM LIMIT

----- SITE BREAKDOWN DELAYS -----	
BREAKDOWN DURATION (MINS)	0
RANGE OF QUEUE DELAY - MIN	0.0
(VEH-H) MAX	0.0
AV BREAKDOWNS PER DAY	0.00
AV QUEUE DELAY/DAY (VEH-H)	0.0
AV TOTAL DELAY/DAY (VEH-H)	0.0

----- SITE ACCIDENT DELAYS -----	
BREAKDOWN DURATION (MINS)	0
RANGE OF QUEUE DELAY - MIN	0
(VEH-H) MAX	0
AV BREAKDOWNS PER DAY	0
AV QUEUE DELAY/DAY (VEH-H)	0
AV TOTAL DELAY/DAY (VEH-H)	0

AVERAGE ACCIDENT NUMBERS (PIA/DAY)	
MAIN ROUTE WITHOUT WORKS	0.0740
MAIN ROUTE WITH WORKS	0.0674
'DIVERSION'	0.0108

PIA: Personal Injury Accidents

ECONOMIC IMPACT ON ROAD USERS	
ROAD USER COSTS PER DAY	\$91,995
CONGESTED HOURS PER DAY*	6

*Delays Exceeding User-Specified Maximum

IH 94: STH 100/RYAN RD TO STH 20 (MILWAUKEE AND RACINE COUNTIES)
OFF-PEAK DAY CLOSURE
NO DIVERSION ROUTE (MAX QUEUE METHOD)

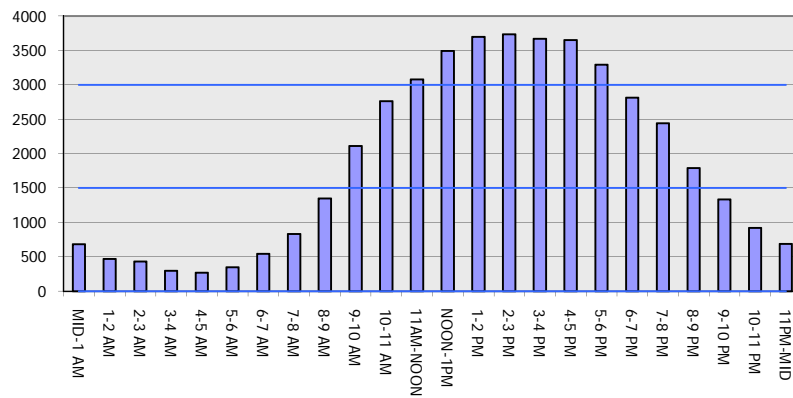
OCTOBER

Analyzed for 2009
 Construction Season

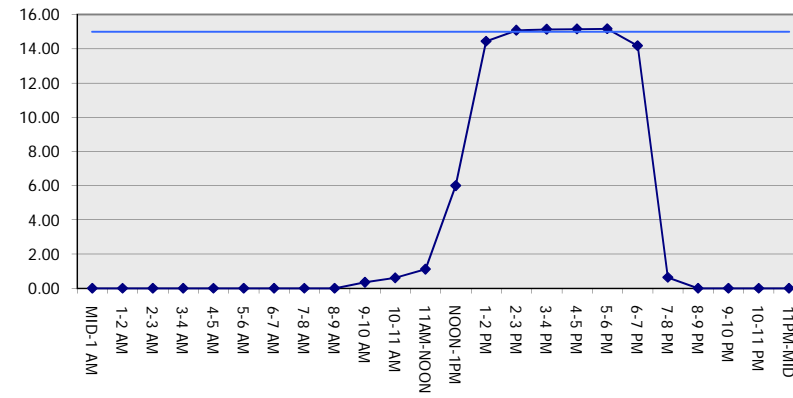
GRAPHICAL REPRESENTATION OF TRAFFIC MODEL INPUT AND OUTPUT

SUNDAY EASTBOUND DIRECTION

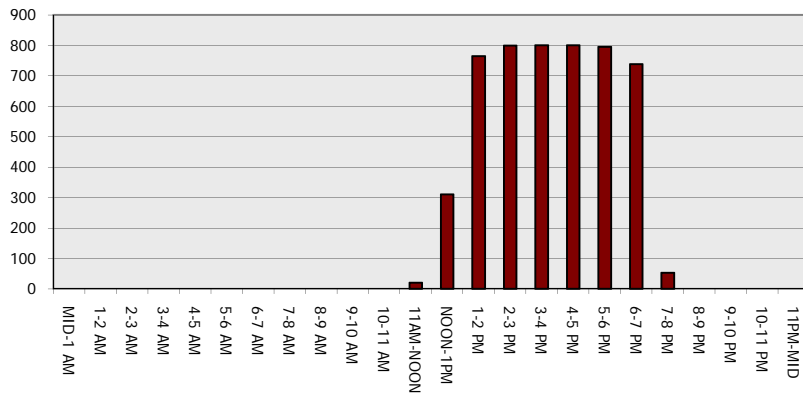
Main Route - Traffic Demand (Vehicles Per Hour)



Main Route Average Delay Per Vehicle (Minutes)



Main Route - Average Queue Length (Vehicles)



Main Route - Average Speed (MPH)

