

<b>IH 94: STH 100/RYAN RD TO STH 20 (MILWAUKEE AND RACINE COUNTIES)</b> <b>OFF-PEAK DAY 2 LANE CLOSURE</b> <b>NO DIVERSION ROUTE (MAX QUEUE METHOD)</b>	<b>OCTOBER</b> Analyzed for 2009 Construction Season
---	--

**SUMMARY OF TRAFFIC MODEL OUTPUT**

SATURDAY WESTBOUND DIRECTION

TIME OF DAY	FLOWS AND CAPACITY IN VEH/HR						AVERAGE SPEEDS IN MPH				
	MAIN ROUTE		SITE CAPA CITY	FLOW		AV.DEL PER VEH (MINS)	AVERAGE QUEUE (VEH)	MAIN ROUTE		SITE	
	DEMAND FLOW	PCT HEAVY		MAIN ROUTE	'DIVER TED'			WITHOUT WORK ZONE	WITH WORK ZONE		
MID-1 AM	703	0.0	OFF	703	0	0.00	0	70.2	70.2	70.2	
1-2 AM	456	0.0	OFF	456	0	0.00	0	70.2	70.2	70.2	
2-3 AM	389	0.0	OFF	389	0	0.00	0	70.2	70.2	70.2	
3-4 AM	373	0.0	OFF	373	0	0.00	0	70.2	70.2	70.2	
4-5 AM	475	0.0	OFF	475	0	0.00	0	70.2	70.2	70.2	
5-6 AM	843	0.0	OFF	843	0	0.00	0	70.2	70.2	70.2	
6-7 AM	1223	0.0	OFF	1223	0	0.00	0	70.2	70.2	70.2	
7-8 AM	1636	0.0	OFF	1636	0	0.00	0	70.0	70.0	70.0	
8-9 AM	2147	0.0	1499	1886	261	9.77+	259	69.4	33.2	32.5	
9-10 AM	2382	0.0	1499	1500	882	16.17+	399	69.1	24.8	32.5	
10-11 AM	2750	0.0	1500	1500	1250	16.11+	400	68.6	24.8	32.5	
11AM-NOON	3008	0.0	1500	1500	1508	16.06+	400	68.3	24.8	32.5	
NOON-1PM	2998	0.0	1500	1500	1498	16.07+	400	68.3	24.8	32.5	
1-2 PM	2852	0.0	1500	1500	1352	16.09+	400	68.5	24.8	32.5	
2-3 PM	3041	0.0	1500	1500	1541	16.06+	400	68.2	24.8	32.5	
3-4 PM	3069	0.0	1500	1500	1569	16.05+	400	68.2	24.8	32.5	
4-5 PM	3106	0.0	1500	1500	1606	16.05+	400	68.2	24.8	32.5	
5-6 PM	3119	0.0	1500	1500	1619	16.05+	400	68.2	24.8	32.5	
6-7 PM	2660	0.0	OFF	2660	0	0.29	22	68.7	66.6	66.6	
7-8 PM	2146	0.0	OFF	2146	0	0.00	0	69.4	69.4	69.4	
8-9 PM	1920	0.0	OFF	1920	0	0.00	0	69.7	69.7	69.7	
9-10 PM	1666	0.0	OFF	1666	0	0.00	0	70.0	70.0	70.0	
10-11 PM	1603	0.0	OFF	1603	0	0.00	0	70.0	70.0	70.0	
11PM-MID	1258	0.0	OFF	1258	0	0.00	0	70.2	70.2	70.2	

"OFF" INDICATES NO ROAD WORK (ALL LANES OPEN TO TRAFFIC)

+ INDICATES QUEUEING EXCEEDS USER-SPECIFIED MAXIMUM LIMIT

*----- SITE BREAKDOWN DELAYS -----*	
BREAKDOWN DURATION (MINS)	0
RANGE OF QUEUE DELAY - MIN (VEH-H) MAX	0.0
AV BREAKDOWNS PER DAY	0.00
AV QUEUE DELAY/DAY (VEH-H)	0.0
AV TOTAL DELAY/DAY (VEH-H)	0.0

*----- SITE ACCIDENT DELAYS -----*	
BREAKDOWN DURATION (MINS)	0
RANGE OF QUEUE DELAY - MIN (VEH-H) MAX	0
AV BREAKDOWNS PER DAY	0
AV QUEUE DELAY/DAY (VEH-H)	0
AV TOTAL DELAY/DAY (VEH-H)	0

AVERAGE ACCIDENT NUMBERS (PIA/DAY)	
MAIN ROUTE WITHOUT WORKS	0.0758
MAIN ROUTE WITH WORKS	0.0532
'DIVERSION'	0.0502
PIA: Personal Injury Accidents	
IMPACTS ON ROAD USERS	
ROAD USER COSTS PER DAY	\$121,734
CONGESTED HOURS PER DAY*	10

\*Delays Exceeding User-Specified Maximum

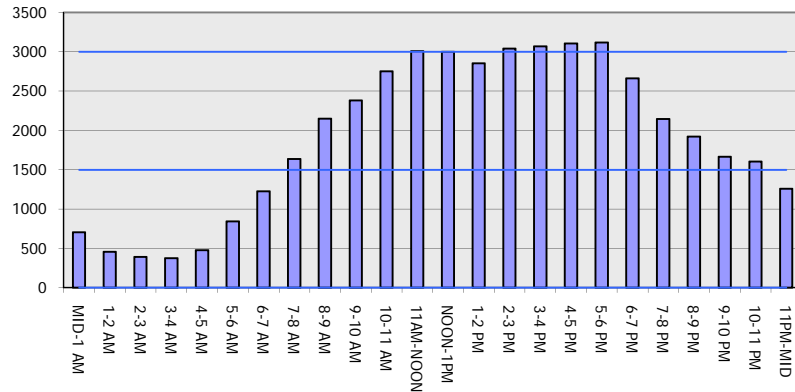
**IH 94: STH 100/RYAN RD TO STH 20 (MILWAUKEE AND RACINE COUNTIES)**  
**OFF-PEAK DAY 2 LANE CLOSURE**  
**NO DIVERSION ROUTE (MAX QUEUE METHOD)**

**OCTOBER**

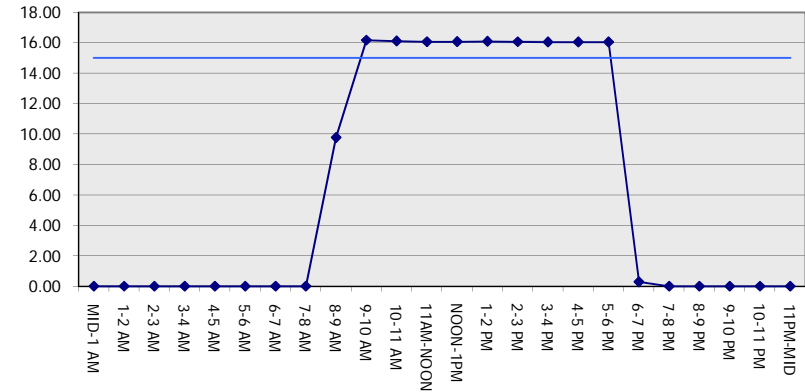
Analyzed for 2009  
 Construction Season

**GRAPHICAL REPRESENTATION OF TRAFFIC MODEL INPUT AND OUTPUT**  
**SATURDAY WESTBOUND DIRECTION**

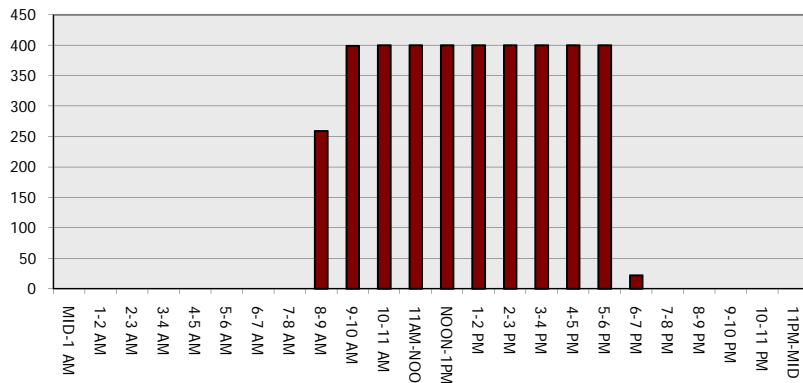
**Main Route - Traffic Demand (Vehicles Per Hour)**



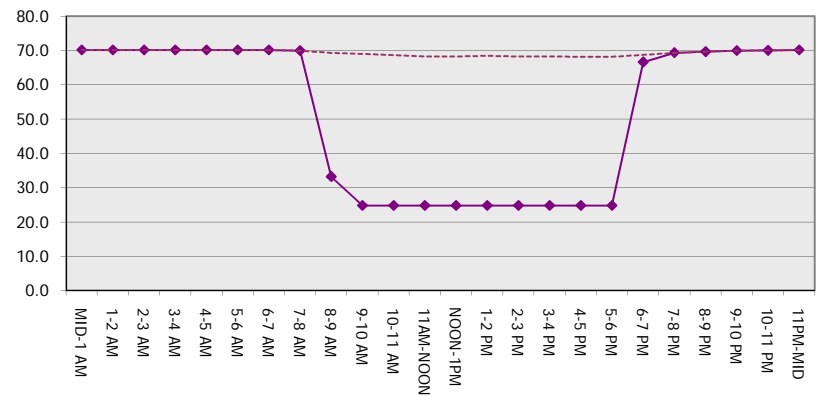
**Main Route Average Delay Per Vehicle (Minutes)**



**Main Route - Average Queue Length (Vehicles)**



**Main Route - Average Speed (MPH)**



<b>IH 94: STH 100/RYAN RD TO STH 20 (MILWAUKEE AND RACINE COUNTIES)</b> <b>OFF-PEAK DAY 2 LANE CLOSURE</b> <b>NO DIVERSION ROUTE (MAX QUEUE METHOD)</b>	<b>OCTOBER</b>
	Analyzed for 2009 Construction Season

**SUMMARY OF TRAFFIC MODEL OUTPUT**

SATURDAY EASTBOUND DIRECTION

TIME OF DAY	FLOWS AND CAPACITY IN VEH/HR							AVERAGE SPEEDS IN MPH		
	MAIN ROUTE		SITE CAPA CITY	FLOW		AV.DEL PER VEH (MINS)	AVERAGE QUEUE (VEH)	MAIN ROUTE		SITE
	DEMAND FLOW	PCT HEAVY		MAIN ROUTE	'DIVER TED'			WITHOUT WORK ZONE	WITH WORK ZONE	
MID-1 AM	695	0.0	OFF	695	0	0.00	0	70.2	70.2	70.2
1-2 AM	472	0.0	OFF	472	0	0.00	0	70.2	70.2	70.2
2-3 AM	446	0.0	OFF	446	0	0.00	0	70.2	70.2	70.2
3-4 AM	377	0.0	OFF	377	0	0.00	0	70.2	70.2	70.2
4-5 AM	393	0.0	OFF	393	0	0.00	0	70.2	70.2	70.2
5-6 AM	586	0.0	OFF	586	0	0.00	0	70.2	70.2	70.2
6-7 AM	911	0.0	OFF	911	0	0.00	0	70.2	70.2	70.2
7-8 AM	1451	0.0	OFF	1451	0	0.00	0	70.2	70.2	70.2
8-9 AM	2058	0.0	1499	2002	56	8.37+	230	69.5	36.0	32.5
9-10 AM	2685	0.0	1500	1472	1213	16.00+	397	68.7	24.9	33.3
10-11 AM	2985	0.0	1500	1500	1485	16.08+	400	68.3	24.7	32.5
11AM-NOON	3190	0.0	1500	1500	1690	16.05+	400	68.1	24.7	32.5
NOON-1PM	3248	0.0	1500	1500	1748	16.04+	400	68.0	24.7	32.5
1-2 PM	3173	0.0	1500	1500	1673	16.05+	399	68.1	24.7	32.5
2-3 PM	3230	0.0	1500	1500	1730	16.04+	400	68.0	24.7	32.5
3-4 PM	3077	0.0	1500	1500	1577	16.07+	400	68.2	24.7	32.5
4-5 PM	2851	0.0	1500	1500	1351	16.10+	400	68.5	24.7	32.5
5-6 PM	2695	0.0	1500	1500	1195	16.13+	400	68.7	24.7	32.5
6-7 PM	2237	0.0	OFF	2237	0	0.38	29	69.2	66.5	66.5
7-8 PM	1793	0.0	OFF	1793	0	0.00	0	69.8	69.8	69.8
8-9 PM	1507	0.0	OFF	1507	0	0.00	0	70.2	70.2	70.2
9-10 PM	1360	0.0	OFF	1360	0	0.00	0	70.2	70.2	70.2
10-11 PM	1291	0.0	OFF	1291	0	0.00	0	70.2	70.2	70.2
11PM-MID	909	0.0	OFF	909	0	0.00	0	70.2	70.2	70.2

"OFF" INDICATES NO ROAD WORK (ALL LANES OPEN TO TRAFFIC)

+ INDICATES QUEUEING EXCEEDS USER-SPECIFIED MAXIMUM LIMIT

*----- SITE BREAKDOWN DELAYS -----*	
BREAKDOWN DURATION (MINS)	0
RANGE OF QUEUE DELAY - MIN (VEH-H) MAX	0.0
AV BREAKDOWNS PER DAY	0.00
AV QUEUE DELAY/DAY (VEH-H)	0.0
AV TOTAL DELAY/DAY (VEH-H)	0.0

*----- SITE ACCIDENT DELAYS -----*	
BREAKDOWN DURATION (MINS)	0
RANGE OF QUEUE DELAY - MIN (VEH-H) MAX	0
AV BREAKDOWNS PER DAY	0
AV QUEUE DELAY/DAY (VEH-H)	0
AV TOTAL DELAY/DAY (VEH-H)	0

AVERAGE ACCIDENT NUMBERS (PIA/DAY)	
MAIN ROUTE WITHOUT WORKS	0.0722
MAIN ROUTE WITH WORKS	0.0485
'DIVERSION'	0.0526

PIA: Personal Injury Accidents

ECONOMIC IMPACT ON ROAD USERS	
ROAD USER COSTS PER DAY	\$124,179
CONGESTED HOURS PER DAY*	10

\*Delays Exceeding User-Specified Maximum

**IH 94: STH 100/RYAN RD TO STH 20 (MILWAUKEE AND RACINE COUNTIES)**  
**OFF-PEAK DAY 2 LANE CLOSURE**  
**NO DIVERSION ROUTE (MAX QUEUE METHOD)**

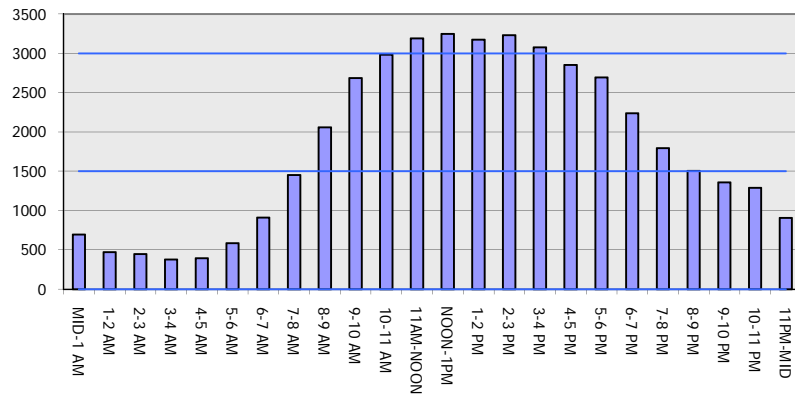
**OCTOBER**

Analyzed for 2009  
 Construction Season

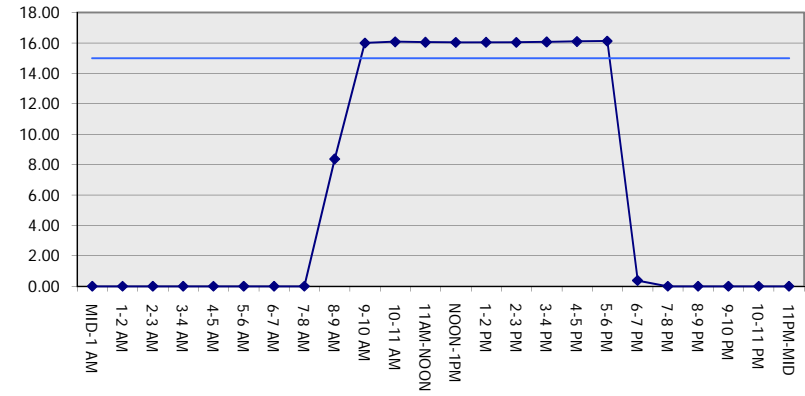
**GRAPHICAL REPRESENTATION OF TRAFFIC MODEL INPUT AND OUTPUT**

**SATURDAY EASTBOUND DIRECTION**

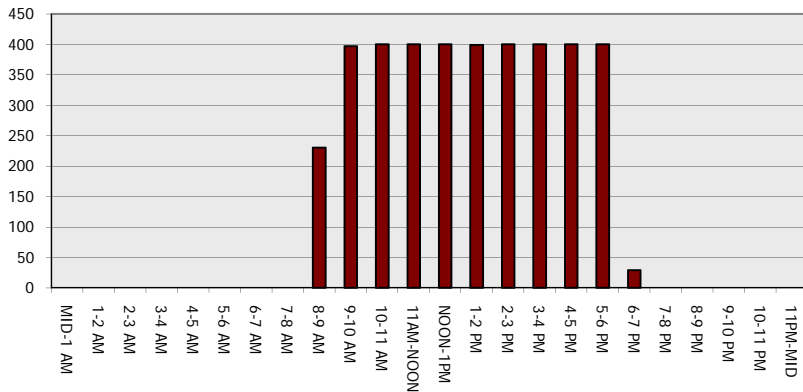
**Main Route - Traffic Demand (Vehicles Per Hour)**



**Main Route Average Delay Per Vehicle (Minutes)**



**Main Route - Average Queue Length (Vehicles)**



**Main Route - Average Speed (MPH)**

