

IH 94: STH 100/RYAN RD TO STH 20 (MILWAUKEE AND RACINE COUNTIES) OFF-PEAK DAY CLOSURE NO DIVERSION ROUTE (MAX QUEUE METHOD)	Analyzed for 2009 Construction Season
--	--

SUMMARY OF TRAFFIC MODEL OUTPUT

SUNDAY WESTBOUND DIRECTION

TIME OF DAY	FLOWS AND CAPACITY IN VEH/HR						AVERAGE SPEEDS IN MPH			
	MAIN ROUTE		SITE CAPA CITY	FLOW		AV.DEL PER VEH (MINS)	AVERAGE QUEUE (VEH)	MAIN ROUTE		SITE
	DEMAND FLOW	PCT HEAVY		MAIN ROUTE	'DIVER TED'			WITHOUT WORK ZONE	WITH WORK ZONE	
MID-1 AM	698	0.0	OFF	698	0	0.00	0	70.2	70.2	70.2
1-2 AM	417	0.0	OFF	417	0	0.00	0	70.2	70.2	70.2
2-3 AM	295	0.0	OFF	295	0	0.00	0	70.2	70.2	70.2
3-4 AM	232	0.0	OFF	232	0	0.00	0	70.2	70.2	70.2
4-5 AM	236	0.0	OFF	236	0	0.00	0	70.2	70.2	70.2
5-6 AM	346	0.0	OFF	346	0	0.00	0	70.2	70.2	70.2
6-7 AM	608	0.0	OFF	608	0	0.00	0	70.2	70.2	70.2
7-8 AM	915	0.0	OFF	915	0	0.00	0	70.2	70.2	70.2
8-9 AM	1422	0.0	OFF	1422	0	0.00	0	70.2	70.2	70.2
9-10 AM	1825	0.0	3000	1825	0	0.35	0	69.7	67.1	49.7
10-11 AM	2527	0.0	2999	2527	0	0.45	0	68.9	65.6	45.8
11AM-NOON	2987	0.0	2999	2987	0	0.85	6	68.3	62.5	37.4
NOON-1PM	3047	0.0	3000	3047	0	1.67	50	68.2	57.7	36.9
1-2 PM	2956	0.0	2999	2956	0	1.93	64	68.4	56.4	37.0
2-3 PM	2609	0.0	3000	2609	0	0.53	1	68.8	65.0	43.7
3-4 PM	3033	0.0	2999	3033	0	0.92	9	68.2	62.0	36.9
4-5 PM	2932	0.0	2999	2932	0	0.96	12	68.4	61.9	37.6
5-6 PM	2872	0.0	3000	2872	0	0.68	0	68.5	63.7	38.9
6-7 PM	2735	0.0	3000	2735	0	0.59	0	68.6	64.5	41.3
7-8 PM	2477	0.0	OFF	2477	0	0.00	0	68.9	68.9	68.9
8-9 PM	2036	0.0	OFF	2036	0	0.00	0	69.5	69.5	69.5
9-10 PM	1630	0.0	OFF	1630	0	0.00	0	70.0	70.0	70.0
10-11 PM	1231	0.0	OFF	1231	0	0.00	0	70.2	70.2	70.2
11PM-MID	801	0.0	OFF	801	0	0.00	0	70.2	70.2	70.2

"OFF" INDICATES NO ROAD WORK (ALL LANES OPEN TO TRAFFIC)

----- SITE BREAKDOWN DELAYS -----	
BREAKDOWN DURATION (MINS)	0
RANGE OF QUEUE DELAY - MIN (VEH-H) MAX	0.0
AV BREAKDOWNS PER DAY	0.00
AV QUEUE DELAY/DAY (VEH-H)	0.0
AV TOTAL DELAY/DAY (VEH-H)	0.0

----- SITE ACCIDENT DELAYS -----	
BREAKDOWN DURATION (MINS)	0
RANGE OF QUEUE DELAY - MIN (VEH-H) MAX	0
AV BREAKDOWNS PER DAY	0
AV QUEUE DELAY/DAY (VEH-H)	0
AV TOTAL DELAY/DAY (VEH-H)	0

AVERAGE ACCIDENT NUMBERS (PIA/DAY)	
MAIN ROUTE WITHOUT WORKS	0.0676
MAIN ROUTE WITH WORKS	0.0658
'DIVERSION'	0.0000
<small>PIA: Personal Injury Accidents</small>	
IMPACTS ON ROAD USERS	
ROAD USER COSTS PER DAY	\$6,987
CONGESTED HOURS PER DAY*	0

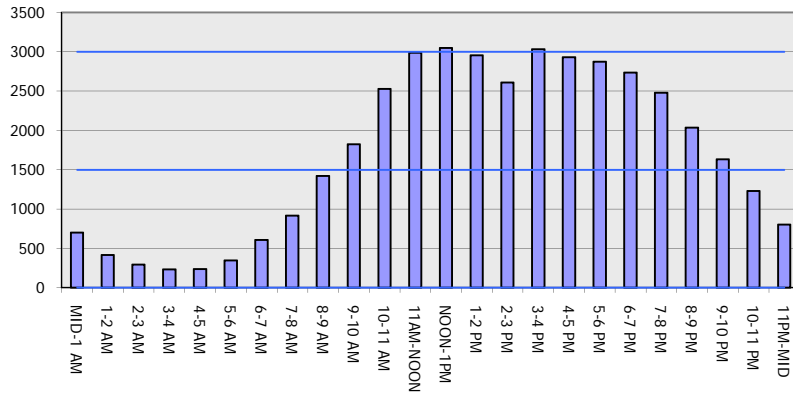
*Delays Exceeding User-Specified Maximum

IH 94: STH 100/RYAN RD TO STH 20 (MILWAUKEE AND RACINE COUNTIES)
OFF-PEAK DAY CLOSURE
NO DIVERSION ROUTE (MAX QUEUE METHOD)

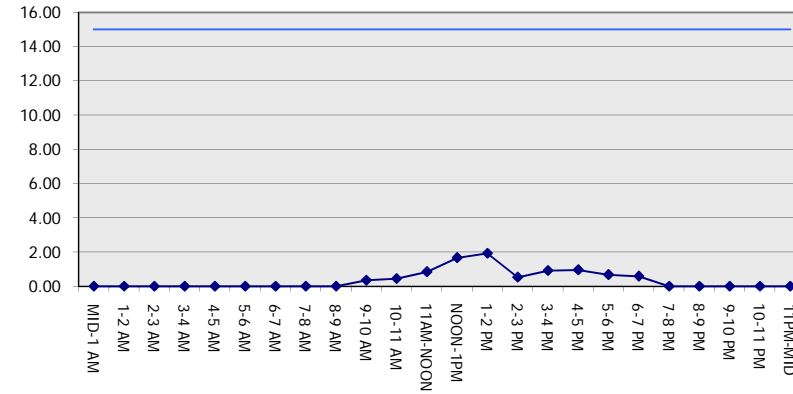
Analyzed for 2009
 Construction Season

GRAPHICAL REPRESENTATION OF TRAFFIC MODEL INPUT AND OUTPUT
SUNDAY WESTBOUND DIRECTION

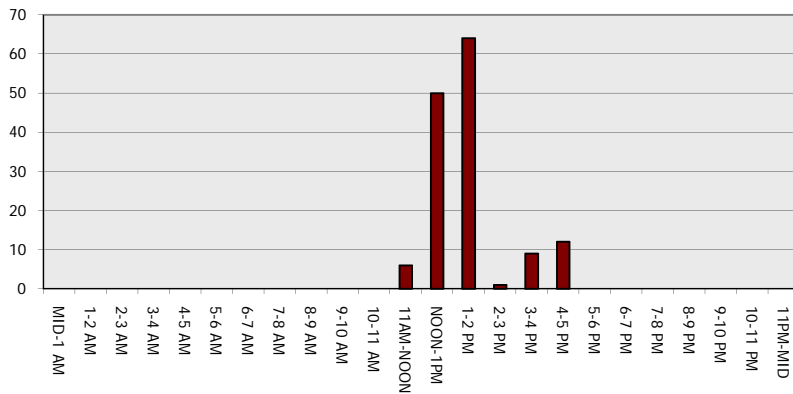
Main Route - Traffic Demand (Vehicles Per Hour)



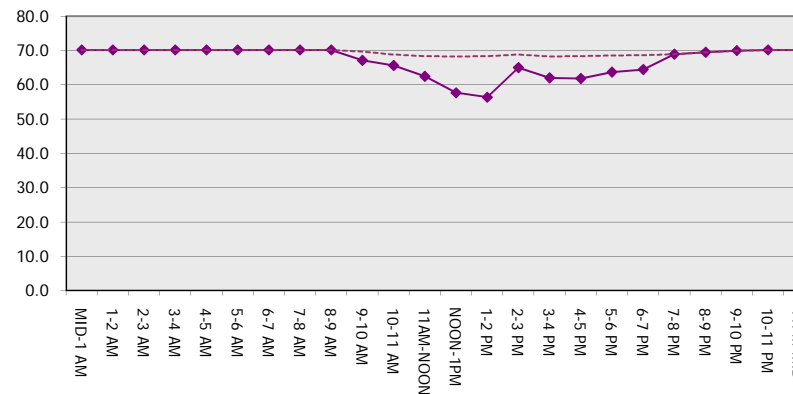
Main Route Average Delay Per Vehicle (Minutes)



Main Route - Average Queue Length (Vehicles)



Main Route - Average Speed (MPH)



IH 94: STH 100/RYAN RD TO STH 20 (MILWAUKEE AND RACINE COUNTIES) OFF-PEAK DAY CLOSURE NO DIVERSION ROUTE (MAX QUEUE METHOD)	Analyzed for 2009 Construction Season
--	--

SUMMARY OF TRAFFIC MODEL OUTPUT

SUNDAY EASTBOUND DIRECTION

TIME OF DAY	FLOWS AND CAPACITY IN VEH/HR						AVERAGE SPEEDS IN MPH			
	MAIN ROUTE		SITE CAPA CITY	FLOW		AV.DEL PER VEH (MINS)	AVERAGE QUEUE (VEH)	MAIN ROUTE		SITE
	DEMAND FLOW	PCT HEAVY		MAIN ROUTE	'DIVER TED'			WITHOUT WORK ZONE	WITH WORK ZONE	
MID-1 AM	614	0.0	OFF	614	0	0.00	0	70.2	70.2	70.2
1-2 AM	421	0.0	OFF	421	0	0.00	0	70.2	70.2	70.2
2-3 AM	392	0.0	OFF	392	0	0.00	0	70.2	70.2	70.2
3-4 AM	276	0.0	OFF	276	0	0.00	0	70.2	70.2	70.2
4-5 AM	233	0.0	OFF	233	0	0.00	0	70.2	70.2	70.2
5-6 AM	353	0.0	OFF	353	0	0.00	0	70.2	70.2	70.2
6-7 AM	575	0.0	OFF	575	0	0.00	0	70.2	70.2	70.2
7-8 AM	917	0.0	OFF	917	0	0.00	0	70.2	70.2	70.2
8-9 AM	1354	0.0	OFF	1354	0	0.00	0	70.2	70.2	70.2
9-10 AM	2107	0.0	3000	2107	0	0.35	0	69.4	66.8	49.7
10-11 AM	2730	0.0	2999	2730	0	0.58	0	68.6	64.5	41.5
11AM-NOON	3207	0.0	2999	3207	0	2.15	81	68.1	55.1	36.9
NOON-1PM	3424	0.0	3000	3424	0	7.88	407	67.8	36.5	36.9
1-2 PM	3549	0.0	2999	3230	320	14.76+	775	67.6	26.0	36.9
2-3 PM	3636	0.0	3000	3000	636	15.17+	800	67.3	25.5	36.9
3-4 PM	3598	0.0	3000	3000	598	15.21+	800	67.6	25.5	36.9
4-5 PM	3751	0.0	3000	3000	751	15.06+	800	66.5	25.5	36.9
5-6 PM	3409	0.0	2999	2947	462	15.13+	794	67.8	25.6	36.9
6-7 PM	2753	0.0	2999	2753	0	13.78+	718	68.6	27.3	36.9
7-8 PM	2276	0.0	OFF	2276	0	0.51	42	69.2	65.5	65.5
8-9 PM	2040	0.0	OFF	2040	0	0.00	0	69.5	69.5	69.5
9-10 PM	1517	0.0	OFF	1517	0	0.00	0	70.2	70.2	70.2
10-11 PM	1063	0.0	OFF	1063	0	0.00	0	70.2	70.2	70.2
11PM-MID	722	0.0	OFF	722	0	0.00	0	70.2	70.2	70.2

"OFF" INDICATES NO ROAD WORK (ALL LANES OPEN TO TRAFFIC)

+ INDICATES QUEUEING EXCEEDS USER-SPECIFIED MAXIMUM LIMIT

----- SITE BREAKDOWN DELAYS -----	
BREAKDOWN DURATION (MINS)	0
RANGE OF QUEUE DELAY - MIN (VEH-H) MAX	0.0
AV BREAKDOWNS PER DAY	0.00
AV QUEUE DELAY/DAY (VEH-H)	0.0
AV TOTAL DELAY/DAY (VEH-H)	0.0

----- SITE ACCIDENT DELAYS -----	
BREAKDOWN DURATION (MINS)	0
RANGE OF QUEUE DELAY - MIN (VEH-H) MAX	0
AV BREAKDOWNS PER DAY	0
AV QUEUE DELAY/DAY (VEH-H)	0
AV TOTAL DELAY/DAY (VEH-H)	0

AVERAGE ACCIDENT NUMBERS (PIA/DAY)	
MAIN ROUTE WITHOUT WORKS	0.0744
MAIN ROUTE WITH WORKS	0.0678
'DIVERSION'	0.0106

PIA: Personal Injury Accidents

ECONOMIC IMPACT ON ROAD USERS	
ROAD USER COSTS PER DAY	\$94,104
CONGESTED HOURS PER DAY*	6

*Delays Exceeding User-Specified Maximum

**IH 94: STH 100/RYAN RD TO STH 20 (MILWAUKEE AND RACINE COUNTIES)
 OFF-PEAK DAY CLOSURE
 NO DIVERSION ROUTE (MAX QUEUE METHOD)**

Analyzed for 2009
 Construction Season

GRAPHICAL REPRESENTATION OF TRAFFIC MODEL INPUT AND OUTPUT
SUNDAY EASTBOUND DIRECTION

