

IH 43: STH 57/167 TO STH 100 (MILWAUKEE AND OZAUKEE COUNTIES) OFF-PEAK DAY CLOSURE NO DIVERSION ROUTE (MAX QUEUE METHOD)	OCTOBER
	Analyzed for 2009 Construction Season

SUMMARY OF TRAFFIC MODEL OUTPUT

SUNDAY SOUTHBOUND DIRECTION

TIME OF DAY	FLOWS AND CAPACITY IN VEH/HR						AVERAGE SPEEDS IN MPH			
	MAIN ROUTE		SITE CAPA CITY	FLOW		AV.DEL PER VEH (MINS)	AVERAGE QUEUE (VEH)	MAIN ROUTE		SITE
	DEMAND FLOW	PCT HEAVY		MAIN ROUTE	'DIVER TED'			WITHOUT WORK ZONE	WITH WORK ZONE	
MID-1 AM	421	0.0	OFF	421	0	0.00	0	65.6	65.6	65.6
1-2 AM	212	0.0	OFF	212	0	0.00	0	66.0	66.0	66.0
2-3 AM	124	0.0	OFF	124	0	0.00	0	66.1	66.1	66.1
3-4 AM	103	0.0	OFF	103	0	0.00	0	66.2	66.2	66.2
4-5 AM	116	0.0	OFF	116	0	0.00	0	66.2	66.2	66.2
5-6 AM	205	0.0	OFF	205	0	0.00	0	66.0	66.0	66.0
6-7 AM	377	0.0	OFF	377	0	0.00	0	65.7	65.7	65.7
7-8 AM	706	0.0	OFF	706	0	0.00	0	65.1	65.1	65.1
8-9 AM	985	0.0	OFF	985	0	0.00	0	64.5	64.5	64.5
9-10 AM	1547	0.0	1499	1547	0	1.60	21	63.5	41.0	31.5
10-11 AM	1956	0.0	1500	1867	89	10.12+	275	62.7	14.5	30.8
11AM-NOON	2276	0.0	1500	1498	778	16.08+	408	62.2	10.4	30.8
NOON-1PM	2521	0.0	1499	1493	1028	16.03+	408	60.7	10.3	30.8
1-2 PM	2507	0.0	1499	1495	1011	16.03+	408	60.8	10.3	30.8
2-3 PM	2495	0.0	1499	1497	999	16.03+	408	60.9	10.3	30.8
3-4 PM	2697	0.0	1499	1492	1205	15.95+	409	58.9	10.3	30.8
4-5 PM	2776	0.0	1499	1493	1283	15.91+	409	58.1	10.3	30.8
5-6 PM	2819	0.0	1499	1496	1322	15.90+	410	57.6	10.3	30.8
6-7 PM	2701	0.0	1499	1499	1203	15.94+	409	58.8	10.3	30.8
7-8 PM	1891	0.0	OFF	1891	0	0.64	40	62.8	51.6	51.6
8-9 PM	1152	0.0	OFF	1152	0	0.00	0	64.2	64.2	64.2
9-10 PM	921	0.0	OFF	921	0	0.00	0	64.6	64.6	64.6
10-11 PM	541	0.0	OFF	541	0	0.00	0	65.4	65.4	65.4
11PM-MID	408	0.0	OFF	408	0	0.00	0	65.6	65.6	65.6

"OFF" INDICATES NO ROAD WORK (ALL LANES OPEN TO TRAFFIC)

+ INDICATES QUEUEING EXCEEDS USER-SPECIFIED MAXIMUM LIMIT

----- SITE BREAKDOWN DELAYS -----	
BREAKDOWN DURATION (MINS)	0
RANGE OF QUEUE DELAY - MIN (VEH-H) MAX	0.0
AV BREAKDOWNS PER DAY	0.00
AV QUEUE DELAY/DAY (VEH-H)	0.0
AV TOTAL DELAY/DAY (VEH-H)	0.0

----- SITE ACCIDENT DELAYS -----	
BREAKDOWN DURATION (MINS)	0
RANGE OF QUEUE DELAY - MIN (VEH-H) MAX	0
AV BREAKDOWNS PER DAY	0
AV QUEUE DELAY/DAY (VEH-H)	0
AV TOTAL DELAY/DAY (VEH-H)	0

AVERAGE ACCIDENT NUMBERS (PIA/DAY)	
MAIN ROUTE WITHOUT WORKS	0.0160
MAIN ROUTE WITH WORKS	0.0106
'DIVERSION'	0.0102
PIA: Personal Injury Accidents	
IMPACTS ON ROAD USERS	
ROAD USER COSTS PER DAY	\$98,477
CONGESTED HOURS PER DAY*	9

*Delays Exceeding User-Specified Maximum

IH 43: STH 57/167 TO STH 100 (MILWAUKEE AND OZAUKEE COUNTIES)
OFF-PEAK DAY CLOSURE
NO DIVERSION ROUTE (MAX QUEUE METHOD)

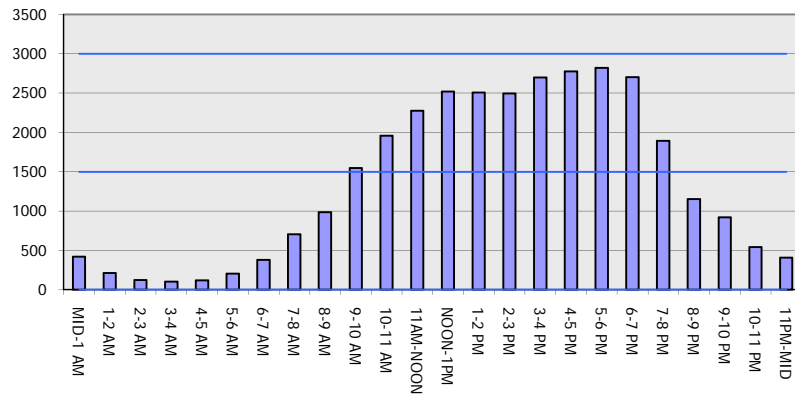
OCTOBER

Analyzed for 2009
 Construction Season

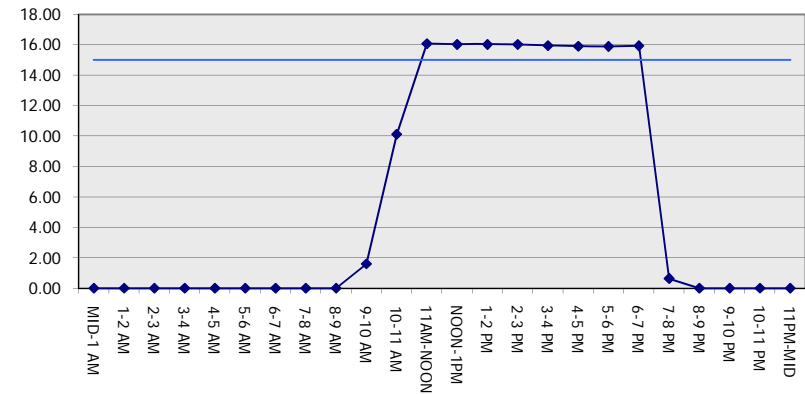
GRAPHICAL REPRESENTATION OF TRAFFIC MODEL INPUT AND OUTPUT

SUNDAY SOUTHBOUND DIRECTION

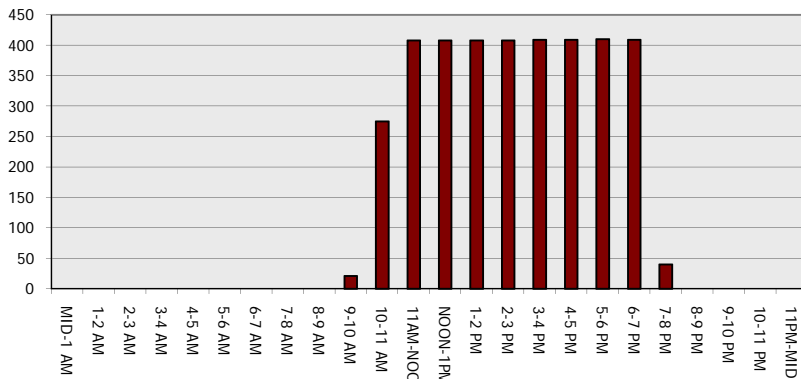
Main Route - Traffic Demand (Vehicles Per Hour)



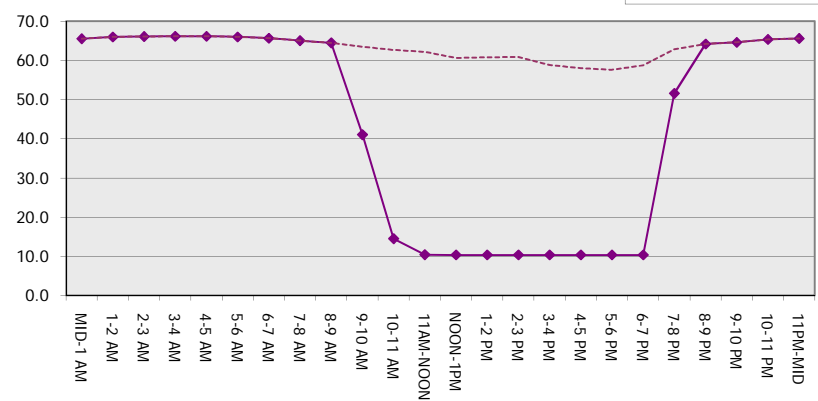
Main Route Average Delay Per Vehicle (Minutes)



Main Route - Average Queue Length (Vehicles)



Main Route - Average Speed (MPH)



IH 43: STH 57/167 TO STH 100 (MILWAUKEE AND OZAUKEE COUNTIES) OFF-PEAK DAY CLOSURE NO DIVERSION ROUTE (MAX QUEUE METHOD)	OCTOBER
	Analyzed for 2009 Construction Season

SUMMARY OF TRAFFIC MODEL OUTPUT

SUNDAY NORTHBOUND DIRECTION

TIME OF DAY	FLOWS AND CAPACITY IN VEH/HR						AVERAGE SPEEDS IN MPH			
	MAIN ROUTE		SITE CAPA CITY	FLOW		AV.DEL PER VEH (MINS)	AVERAGE QUEUE (VEH)	MAIN ROUTE		SITE
	DEMAND FLOW	PCT HEAVY		MAIN ROUTE	'DIVER TED'			WITHOUT WORK ZONE	WITH WORK ZONE	
MID-1 AM	526	0.0	OFF	526	0	0.00	0	65.4	65.4	65.4
1-2 AM	316	0.0	OFF	316	0	0.00	0	65.8	65.8	65.8
2-3 AM	286	0.0	OFF	286	0	0.00	0	65.8	65.8	65.8
3-4 AM	209	0.0	OFF	209	0	0.00	0	66.0	66.0	66.0
4-5 AM	150	0.0	OFF	150	0	0.00	0	66.1	66.1	66.1
5-6 AM	254	0.0	OFF	254	0	0.00	0	65.9	65.9	65.9
6-7 AM	610	0.0	OFF	610	0	0.00	0	65.3	65.3	65.3
7-8 AM	1044	0.0	OFF	1044	0	0.00	0	64.5	64.5	64.5
8-9 AM	1394	0.0	OFF	1394	0	0.00	0	63.8	63.8	63.8
9-10 AM	1616	0.0	1499	1616	0	2.52	46	63.4	34.1	30.8
10-11 AM	1772	0.0	1500	1772	0	9.12	234	63.1	15.4	30.8
11AM-NOON	2175	0.0	1499	1501	674	16.08+	407	62.3	10.4	30.8
NOON-1PM	2309	0.0	1500	1501	808	16.07+	408	62.1	10.4	30.8
1-2 PM	2272	0.0	1500	1501	771	16.08+	408	62.2	10.4	30.8
2-3 PM	2276	0.0	1500	1501	775	16.08+	408	62.2	10.4	30.8
3-4 PM	2376	0.0	1500	1501	875	16.07+	408	62.0	10.4	30.8
4-5 PM	2195	0.0	1500	1501	694	16.08+	407	62.3	10.4	30.8
5-6 PM	1886	0.0	1500	1501	385	16.10+	407	62.8	10.4	30.8
6-7 PM	1632	0.0	1500	1512	120	16.06+	405	63.3	10.4	30.8
7-8 PM	1287	0.0	OFF	1287	0	0.49	30	64.0	54.8	54.8
8-9 PM	921	0.0	OFF	921	0	0.00	0	64.6	64.6	64.6
9-10 PM	770	0.0	OFF	770	0	0.00	0	65.0	65.0	65.0
10-11 PM	628	0.0	OFF	628	0	0.00	0	65.2	65.2	65.2
11PM-MID	435	0.0	OFF	435	0	0.00	0	65.6	65.6	65.6

"OFF" INDICATES NO ROAD WORK (ALL LANES OPEN TO TRAFFIC)

+ INDICATES QUEUEING EXCEEDS USER-SPECIFIED MAXIMUM LIMIT

----- SITE BREAKDOWN DELAYS -----	
BREAKDOWN DURATION (MINS)	0
RANGE OF QUEUE DELAY - MIN	0.0
(VEH-H) MAX	0.0
AV BREAKDOWNS PER DAY	0.00
AV QUEUE DELAY/DAY (VEH-H)	0.0
AV TOTAL DELAY/DAY (VEH-H)	0.0

----- SITE ACCIDENT DELAYS -----	
BREAKDOWN DURATION (MINS)	0
RANGE OF QUEUE DELAY - MIN	0
(VEH-H) MAX	0
AV BREAKDOWNS PER DAY	0
AV QUEUE DELAY/DAY (VEH-H)	0
AV TOTAL DELAY/DAY (VEH-H)	0

AVERAGE ACCIDENT NUMBERS (PIA/DAY)	
MAIN ROUTE WITHOUT WORKS	0.0145
MAIN ROUTE WITH WORKS	0.0109
'DIVERSION'	0.0058

PIA: Personal Injury Accidents

ECONOMIC IMPACT ON ROAD USERS	
ROAD USER COSTS PER DAY	\$81,977
CONGESTED HOURS PER DAY*	8

*Delays Exceeding User-Specified Maximum

**IH 43: STH 57/167 TO STH 100 (MILWAUKEE AND OZAUKEE COUNTIES)
 OFF-PEAK DAY CLOSURE
 NO DIVERSION ROUTE (MAX QUEUE METHOD)**

OCTOBER

Analyzed for 2009
 Construction Season

GRAPHICAL REPRESENTATION OF TRAFFIC MODEL INPUT AND OUTPUT
SUNDAY NORTHBOUND DIRECTION

