

IH 43: STH 57/167 TO STH 100 (MILWAUKEE AND OZAUKEE COUNTIES) OFF-PEAK DAY CLOSURE NO DIVERSION ROUTE (MAX QUEUE METHOD)	OCTOBER
	Analyzed for 2009 Construction Season

SUMMARY OF TRAFFIC MODEL OUTPUT

FRIDAY SOUTHBOUND DIRECTION

TIME OF DAY	FLOWS AND CAPACITY IN VEH/HR						AVERAGE SPEEDS IN MPH				
	MAIN ROUTE		SITE CAPA CITY	FLOW		AV.DEL PER VEH (MINS)	AVERAGE QUEUE (VEH)	MAIN ROUTE		SITE	
	DEMAND FLOW	PCT HEAVY		MAIN ROUTE	'DIVER TED'			WITHOUT WORK ZONE	WITH WORK ZONE		
MID-1 AM	223	0.0	OFF	223	0	0.00	0	66.0	66.0	66.0	
1-2 AM	137	0.0	OFF	137	0	0.00	0	66.1	66.1	66.1	
2-3 AM	121	0.0	OFF	121	0	0.00	0	66.1	66.1	66.1	
3-4 AM	145	0.0	OFF	145	0	0.00	0	66.1	66.1	66.1	
4-5 AM	312	0.0	OFF	312	0	0.00	0	65.8	65.8	65.8	
5-6 AM	1005	0.0	OFF	1005	0	0.00	0	64.5	64.5	64.5	
6-7 AM	2539	0.0	OFF	2539	0	0.00	0	60.5	60.5	60.5	
7-8 AM	3685	0.0	OFF	3685	0	0.00	0	48.7	48.7	48.7	
8-9 AM	2842	0.0	OFF	2842	0	0.00	0	57.4	57.4	57.4	
9-10 AM	2176	0.0	1499	1887	289	11.16+	300	62.3	13.5	30.8	
10-11 AM	2060	0.0	1500	1501	559	16.09+	407	62.5	10.4	30.8	
11AM-NOON	2178	0.0	1500	1501	677	16.08+	407	62.3	10.4	30.8	
NOON-1PM	2274	0.0	1500	1501	773	16.08+	408	62.2	10.4	30.8	
1-2 PM	2260	0.0	1500	1501	759	16.08+	407	62.2	10.4	30.8	
2-3 PM	2447	0.0	1500	1501	946	16.05+	408	61.4	10.4	30.8	
3-4 PM	2768	0.0	1500	1507	1261	15.91+	409	58.1	10.3	30.8	
4-5 PM	2799	0.0	OFF	2799	0	1.24	66	57.8	41.7	41.7	
5-6 PM	2993	0.0	OFF	2993	0	0.00	0	55.8	55.8	55.8	
6-7 PM	2460	0.0	OFF	2460	0	0.00	0	61.3	61.3	61.3	
7-8 PM	1741	0.0	OFF	1741	0	0.00	0	63.2	63.2	63.2	
8-9 PM	1188	0.0	OFF	1188	0	0.00	0	64.1	64.1	64.1	
9-10 PM	1097	0.0	OFF	1097	0	0.00	0	64.3	64.3	64.3	
10-11 PM	920	0.0	OFF	920	0	0.00	0	64.6	64.6	64.6	
11PM-MID	661	0.0	OFF	661	0	0.00	0	65.1	65.1	65.1	

"OFF" INDICATES NO ROAD WORK (ALL LANES OPEN TO TRAFFIC)

+ INDICATES QUEUEING EXCEEDS USER-SPECIFIED MAXIMUM LIMIT

----- SITE BREAKDOWN DELAYS -----	
BREAKDOWN DURATION (MINS)	0
RANGE OF QUEUE DELAY - MIN (VEH-H) MAX	0.0
AV BREAKDOWNS PER DAY	0.00
AV QUEUE DELAY/DAY (VEH-H)	0.0
AV TOTAL DELAY/DAY (VEH-H)	0.0

----- SITE ACCIDENT DELAYS -----	
BREAKDOWN DURATION (MINS)	0
RANGE OF QUEUE DELAY - MIN (VEH-H) MAX	0
AV BREAKDOWNS PER DAY	0
AV QUEUE DELAY/DAY (VEH-H)	0
AV TOTAL DELAY/DAY (VEH-H)	0

AVERAGE ACCIDENT NUMBERS (PIA/DAY)	
MAIN ROUTE WITHOUT WORKS	0.0202
MAIN ROUTE WITH WORKS	0.0169
'DIVERSION'	0.0060
PIA: Personal Injury Accidents	
IMPACTS ON ROAD USERS	
ROAD USER COSTS PER DAY	\$55,051
CONGESTED HOURS PER DAY*	7

*Delays Exceeding User-Specified Maximum

IH 43: STH 57/167 TO STH 100 (MILWAUKEE AND OZAUKEE COUNTIES)
OFF-PEAK DAY CLOSURE
NO DIVERSION ROUTE (MAX QUEUE METHOD)

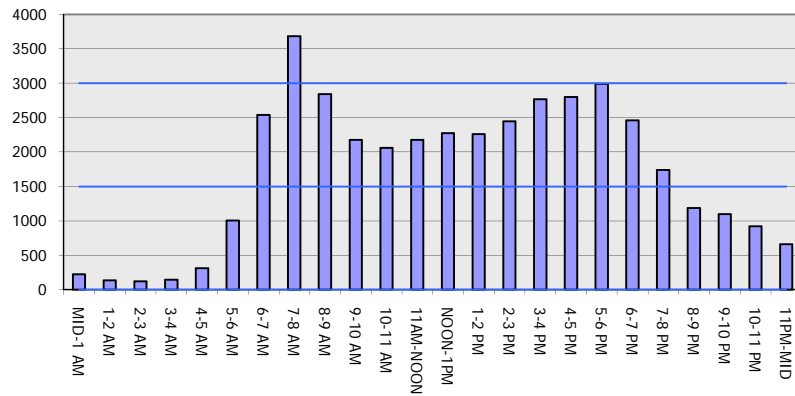
OCTOBER

Analyzed for 2009
 Construction Season

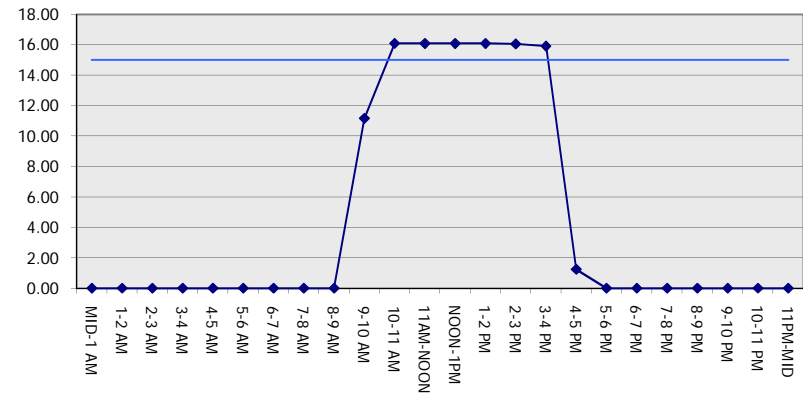
GRAPHICAL REPRESENTATION OF TRAFFIC MODEL INPUT AND OUTPUT

FRIDAY SOUTHBOUND DIRECTION

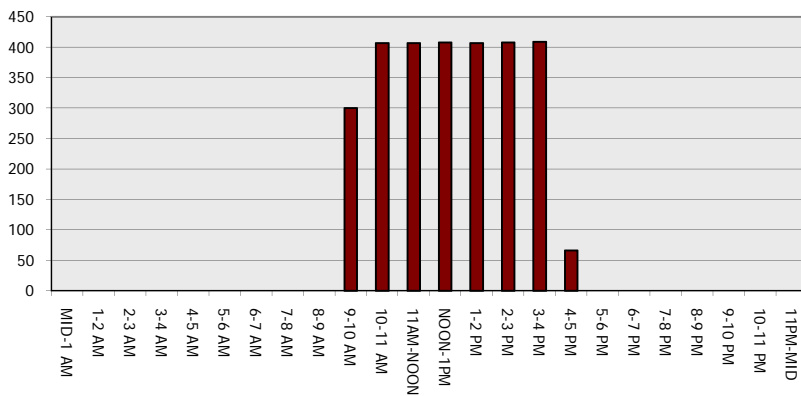
Main Route - Traffic Demand (Vehicles Per Hour)



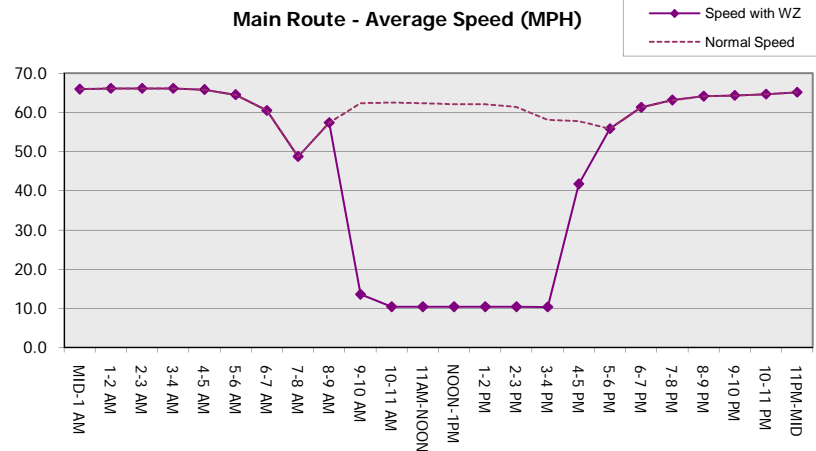
Main Route Average Delay Per Vehicle (Minutes)



Main Route - Average Queue Length (Vehicles)



Main Route - Average Speed (MPH)



IH 43: STH 57/167 TO STH 100 (MILWAUKEE AND OZAUKEE COUNTIES) OFF-PEAK DAY CLOSURE NO DIVERSION ROUTE (MAX QUEUE METHOD)	OCTOBER
	Analyzed for 2009 Construction Season

SUMMARY OF TRAFFIC MODEL OUTPUT

FRIDAY NORTHBOUND DIRECTION

TIME OF DAY	FLOWS AND CAPACITY IN VEH/HR						AVERAGE SPEEDS IN MPH			
	MAIN ROUTE		SITE CAPA CITY	FLOW		AV.DEL PER VEH (MINS)	AVERAGE QUEUE (VEH)	MAIN ROUTE		SITE
	DEMAND FLOW	PCT HEAVY		MAIN ROUTE	'DIVER TED'			WITHOUT WORK ZONE	WITH WORK ZONE	
MID-1 AM	363	0.0	OFF	363	0	0.00	0	65.7	65.7	65.7
1-2 AM	223	0.0	OFF	223	0	0.00	0	66.0	66.0	66.0
2-3 AM	198	0.0	OFF	198	0	0.00	0	66.0	66.0	66.0
3-4 AM	191	0.0	OFF	191	0	0.00	0	66.0	66.0	66.0
4-5 AM	270	0.0	OFF	270	0	0.00	0	65.9	65.9	65.9
5-6 AM	714	0.0	OFF	714	0	0.00	0	65.1	65.1	65.1
6-7 AM	1677	0.0	OFF	1677	0	0.00	0	63.3	63.3	63.3
7-8 AM	2578	0.0	OFF	2578	0	0.00	0	60.1	60.1	60.1
8-9 AM	2547	0.0	OFF	2547	0	0.00	0	60.4	60.4	60.4
9-10 AM	2137	0.0	1499	1850	287	10.27+	284	62.4	14.4	30.8
10-11 AM	2350	0.0	1499	1507	843	16.09+	408	62.0	10.3	30.8
11AM-NOON	2632	0.0	1500	1513	1119	16.00+	409	59.6	10.3	30.8
NOON-1PM	2779	0.0	1500	1514	1265	15.92+	409	58.0	10.3	30.8
1-2 PM	2949	0.0	1500	1511	1438	15.85+	411	56.3	10.3	30.8
2-3 PM	3341	0.0	1500	1500	1840	15.65+	412	52.3	10.3	30.8
3-4 PM	3637	0.0	1500	1500	2137	15.42+	413	49.2	10.3	30.8
4-5 PM	3763	0.0	OFF	3763	0	4.38	278	47.9	22.5	22.5
5-6 PM	3614	0.0	OFF	3614	0	0.62	32	49.5	42.4	42.4
6-7 PM	3202	0.0	OFF	3202	0	0.00	0	53.7	53.7	53.7
7-8 PM	2044	0.0	OFF	2044	0	0.00	0	62.6	62.6	62.6
8-9 PM	1737	0.0	OFF	1737	0	0.00	0	63.2	63.2	63.2
9-10 PM	1637	0.0	OFF	1637	0	0.00	0	63.3	63.3	63.3
10-11 PM	1321	0.0	OFF	1321	0	0.00	0	63.9	63.9	63.9
11PM-MID	784	0.0	OFF	784	0	0.00	0	64.9	64.9	64.9

"OFF" INDICATES NO ROAD WORK (ALL LANES OPEN TO TRAFFIC)

+ INDICATES QUEUEING EXCEEDS USER-SPECIFIED MAXIMUM LIMIT

----- SITE BREAKDOWN DELAYS -----	
BREAKDOWN DURATION (MINS)	0
RANGE OF QUEUE DELAY - MIN (VEH-H) MAX	0.0
AV BREAKDOWNS PER DAY	0.00
AV QUEUE DELAY/DAY (VEH-H)	0.0
AV TOTAL DELAY/DAY (VEH-H)	0.0

----- SITE ACCIDENT DELAYS -----	
BREAKDOWN DURATION (MINS)	0
RANGE OF QUEUE DELAY - MIN (VEH-H) MAX	0
AV BREAKDOWNS PER DAY	0
AV QUEUE DELAY/DAY (VEH-H)	0
AV TOTAL DELAY/DAY (VEH-H)	0

AVERAGE ACCIDENT NUMBERS (PIA/DAY)	
MAIN ROUTE WITHOUT WORKS	0.0230
MAIN ROUTE WITH WORKS	0.0179
'DIVERSION'	0.0102

PIA: Personal Injury Accidents

ECONOMIC IMPACT ON ROAD USERS	
ROAD USER COSTS PER DAY	\$69,854
CONGESTED HOURS PER DAY*	7

*Delays Exceeding User-Specified Maximum

IH 43: STH 57/167 TO STH 100 (MILWAUKEE AND OZAUKEE COUNTIES)
OFF-PEAK DAY CLOSURE
NO DIVERSION ROUTE (MAX QUEUE METHOD)

OCTOBER

Analyzed for 2009
 Construction Season

GRAPHICAL REPRESENTATION OF TRAFFIC MODEL INPUT AND OUTPUT
FRIDAY NORTHBOUND DIRECTION

