

IH 94: CTH BB/RAWSON AVE TO STH 100/Ryan RD (MILWAUKEE COUNTY) OFF-PEAK DAY CLOSURE NO DIVERSION ROUTE (MAX QUEUE METHOD)	OCTOBER
	Analyzed for 2009 Construction Season

SUMMARY OF TRAFFIC MODEL OUTPUT

SUNDAY WESTBOUND DIRECTION

TIME OF DAY	FLOWS AND CAPACITY IN VEH/HR						AVERAGE SPEEDS IN MPH			
	MAIN ROUTE		SITE CAPA CITY	FLOW		AV.DEL PER VEH (MINS)	AVERAGE QUEUE (VEH)	MAIN ROUTE		SITE
	DEMAND FLOW	PCT HEAVY		MAIN ROUTE	'DIVER TED'			WITHOUT WORK ZONE	WITH WORK ZONE	
MID-1 AM	870	0.0	OFF	870	0	0.00	0	70.2	70.2	70.2
1-2 AM	479	0.0	OFF	479	0	0.00	0	70.2	70.2	70.2
2-3 AM	400	0.0	OFF	400	0	0.00	0	70.2	70.2	70.2
3-4 AM	267	0.0	OFF	267	0	0.00	0	70.2	70.2	70.2
4-5 AM	288	0.0	OFF	288	0	0.00	0	70.2	70.2	70.2
5-6 AM	422	0.0	OFF	422	0	0.00	0	70.2	70.2	70.2
6-7 AM	754	0.0	OFF	754	0	0.00	0	70.2	70.2	70.2
7-8 AM	964	0.0	OFF	964	0	0.00	0	70.2	70.2	70.2
8-9 AM	1342	0.0	OFF	1342	0	0.00	0	70.2	70.2	70.2
9-10 AM	1843	0.0	3000	1843	0	0.35	0	69.7	61.4	49.7
10-11 AM	2386	0.0	3000	2386	0	0.36	0	69.1	60.7	49.1
11AM-NOON	2778	0.0	2999	2778	0	0.62	0	68.6	55.5	40.6
NOON-1PM	3008	0.0	2999	3008	0	0.84	4	68.3	51.8	37.0
1-2 PM	3023	0.0	2999	3023	0	1.33	31	68.3	45.4	36.9
2-3 PM	2994	0.0	2999	2994	0	1.39	34	68.3	44.7	36.9
3-4 PM	3181	0.0	3000	3181	0	2.83	121	68.1	32.9	36.9
4-5 PM	3166	0.0	2999	3166	0	6.19	302	68.1	20.4	36.9
5-6 PM	3100	0.0	3000	3100	0	8.84	445	68.2	15.7	36.9
6-7 PM	2773	0.0	2999	2773	0	7.78	392	68.6	17.3	36.9
7-8 PM	2373	0.0	OFF	2373	0	0.10	9	69.1	66.4	66.4
8-9 PM	1843	0.0	OFF	1843	0	0.00	0	69.7	69.7	69.7
9-10 PM	1667	0.0	OFF	1667	0	0.00	0	70.0	70.0	70.0
10-11 PM	1226	0.0	OFF	1226	0	0.00	0	70.2	70.2	70.2
11PM-MID	874	0.0	OFF	874	0	0.00	0	70.2	70.2	70.2

"OFF" INDICATES NO ROAD WORK (ALL LANES OPEN TO TRAFFIC)

----- SITE BREAKDOWN DELAYS -----	
BREAKDOWN DURATION (MINS)	0
RANGE OF QUEUE DELAY - MIN (VEH-H) MAX	0.0
AV BREAKDOWNS PER DAY	0.00
AV QUEUE DELAY/DAY (VEH-H)	0.0
AV TOTAL DELAY/DAY (VEH-H)	0.0

----- SITE ACCIDENT DELAYS -----	
BREAKDOWN DURATION (MINS)	0
RANGE OF QUEUE DELAY - MIN (VEH-H) MAX	0
AV BREAKDOWNS PER DAY	0
AV QUEUE DELAY/DAY (VEH-H)	0
AV TOTAL DELAY/DAY (VEH-H)	0

AVERAGE ACCIDENT NUMBERS (PIA/DAY)	
MAIN ROUTE WITHOUT WORKS	0.0201
MAIN ROUTE WITH WORKS	0.0182
'DIVERSION'	0.0000
PIA: Personal Injury Accidents	
IMPACTS ON ROAD USERS	
ROAD USER COSTS PER DAY	\$24,982
CONGESTED HOURS PER DAY*	0

*Delays Exceeding User-Specified Maximum

IH 94: CTH BB/RAWSON AVE TO STH 100/RYAN RD (MILWAUKEE COUNTY)
OFF-PEAK DAY CLOSURE
NO DIVERSION ROUTE (MAX QUEUE METHOD)

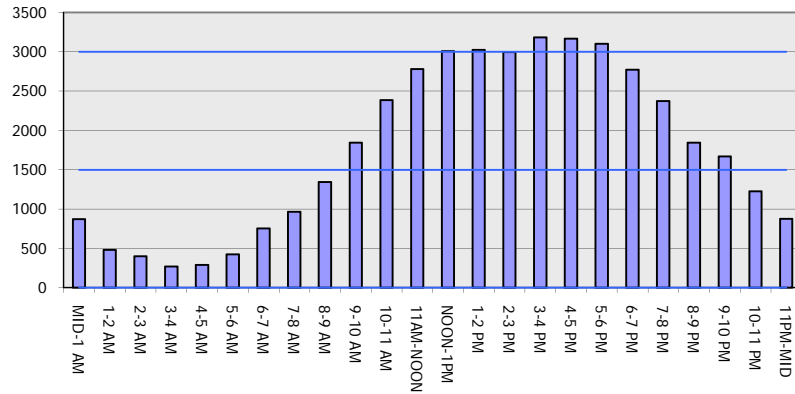
OCTOBER

Analyzed for 2009
 Construction Season

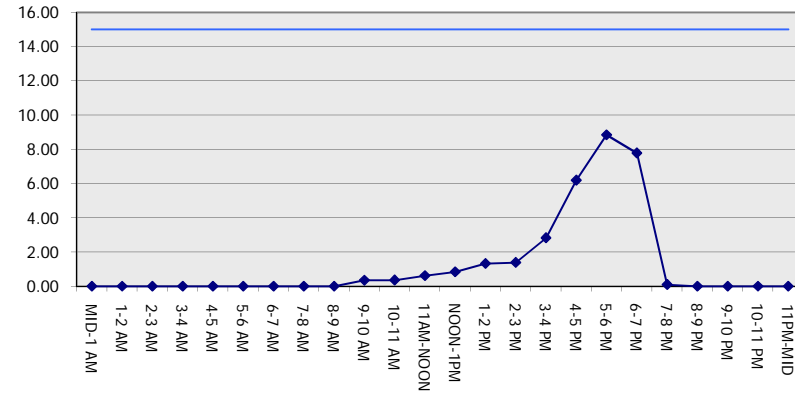
GRAPHICAL REPRESENTATION OF TRAFFIC MODEL INPUT AND OUTPUT

SUNDAY WESTBOUND DIRECTION

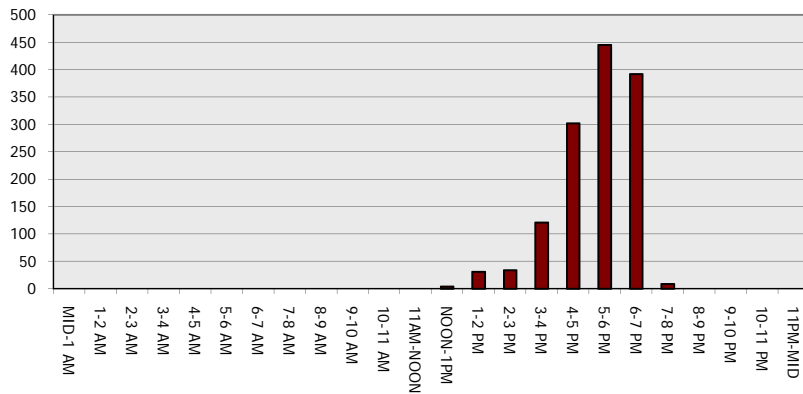
Main Route - Traffic Demand (Vehicles Per Hour)



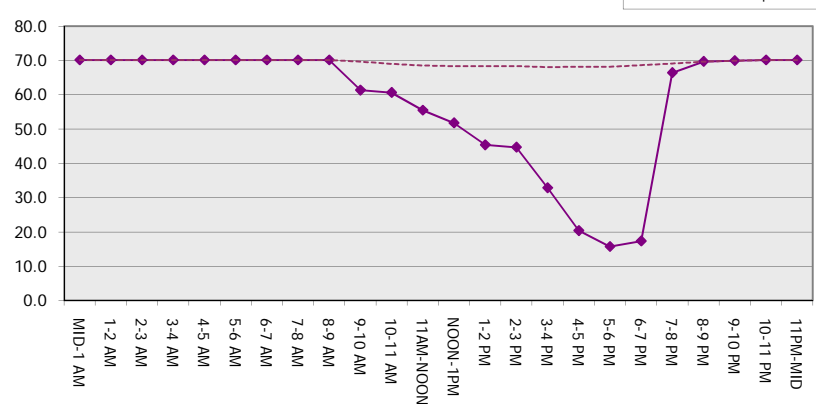
Main Route Average Delay Per Vehicle (Minutes)



Main Route - Average Queue Length (Vehicles)



Main Route - Average Speed (MPH)



IH 94: CTH BB/RAWSON AVE TO STH 100/Ryan Rd (MILWAUKEE COUNTY) OFF-PEAK DAY CLOSURE NO DIVERSION ROUTE (MAX QUEUE METHOD)	OCTOBER
	Analyzed for 2009 Construction Season

SUMMARY OF TRAFFIC MODEL OUTPUT

SUNDAY EASTBOUND DIRECTION

TIME OF DAY	FLOWS AND CAPACITY IN VEH/HR							AVERAGE SPEEDS IN MPH			
	MAIN ROUTE		SITE CAPA CITY	FLOW		AV.DEL PER VEH (MINS)	AVERAGE QUEUE (VEH)	MAIN ROUTE		SITE	
	DEMAND FLOW	PCT HEAVY		MAIN ROUTE	'DIVER TED'			WITHOUT WORK ZONE	WITH WORK ZONE		
MID-1 AM	867	0.0	OFF	867	0	0.00	0	70.2	70.2	70.2	
1-2 AM	587	0.0	OFF	587	0	0.00	0	70.2	70.2	70.2	
2-3 AM	629	0.0	OFF	629	0	0.00	0	70.2	70.2	70.2	
3-4 AM	395	0.0	OFF	395	0	0.00	0	70.2	70.2	70.2	
4-5 AM	424	0.0	OFF	424	0	0.00	0	70.2	70.2	70.2	
5-6 AM	585	0.0	OFF	585	0	0.00	0	70.2	70.2	70.2	
6-7 AM	868	0.0	OFF	868	0	0.00	0	70.2	70.2	70.2	
7-8 AM	1099	0.0	OFF	1099	0	0.00	0	70.2	70.2	70.2	
8-9 AM	1483	0.0	OFF	1483	0	0.00	0	70.2	70.2	70.2	
9-10 AM	2204	0.0	3000	2204	0	0.35	0	69.3	61.1	49.7	
10-11 AM	2703	0.0	2999	2703	0	0.57	0	68.7	56.4	42.0	
11AM-NOON	2955	0.0	2999	2955	0	0.80	4	68.4	52.4	37.9	
NOON-1PM	3355	0.0	3000	3355	0	3.58	178	67.9	28.9	36.9	
1-2 PM	3507	0.0	3000	3507	0	11.72+	621	67.7	13.5	36.9	
2-3 PM	3532	0.0	2999	2991	541	16.17+	849	67.6	11.6	36.9	
3-4 PM	3633	0.0	2999	2994	639	16.17+	849	67.3	11.6	36.9	
4-5 PM	3581	0.0	2999	2995	586	16.17+	849	67.6	11.6	36.9	
5-6 PM	3189	0.0	2999	2996	193	16.16+	847	68.1	11.6	36.9	
6-7 PM	2986	0.0	2999	2947	39	15.99+	837	68.3	11.7	36.9	
7-8 PM	2500	0.0	OFF	2500	0	0.96	92	68.9	50.4	50.4	
8-9 PM	1828	0.0	OFF	1828	0	0.00	0	69.7	69.7	69.7	
9-10 PM	1483	0.0	OFF	1483	0	0.00	0	70.2	70.2	70.2	
10-11 PM	1063	0.0	OFF	1063	0	0.00	0	70.2	70.2	70.2	
11PM-MID	817	0.0	OFF	817	0	0.00	0	70.2	70.2	70.2	

"OFF" INDICATES NO ROAD WORK (ALL LANES OPEN TO TRAFFIC)

+ INDICATES QUEUEING EXCEEDS USER-SPECIFIED MAXIMUM LIMIT

----- SITE BREAKDOWN DELAYS -----	
BREAKDOWN DURATION (MINS)	0
RANGE OF QUEUE DELAY - MIN (VEH-H) MAX	0.0
AV BREAKDOWNS PER DAY	0.00
AV QUEUE DELAY/DAY (VEH-H)	0.0
AV TOTAL DELAY/DAY (VEH-H)	0.0

----- SITE ACCIDENT DELAYS -----	
BREAKDOWN DURATION (MINS)	0
RANGE OF QUEUE DELAY - MIN (VEH-H) MAX	0
AV BREAKDOWNS PER DAY	0
AV QUEUE DELAY/DAY (VEH-H)	0
AV TOTAL DELAY/DAY (VEH-H)	0

AVERAGE ACCIDENT NUMBERS (PIA/DAY)	
MAIN ROUTE WITHOUT WORKS	0.0221
MAIN ROUTE WITH WORKS	0.0192
'DIVERSION'	0.0022

PIA: Personal Injury Accidents

ECONOMIC IMPACT ON ROAD USERS	
ROAD USER COSTS PER DAY	\$90,734
CONGESTED HOURS PER DAY*	6

*Delays Exceeding User-Specified Maximum

IH 94: CTH BB/RAWSON AVE TO STH 100/RYAN RD (MILWAUKEE COUNTY)
OFF-PEAK DAY CLOSURE
NO DIVERSION ROUTE (MAX QUEUE METHOD)

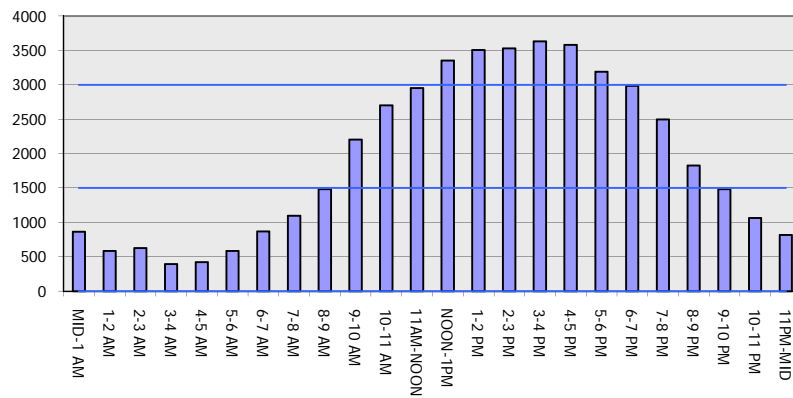
OCTOBER

Analyzed for 2009
 Construction Season

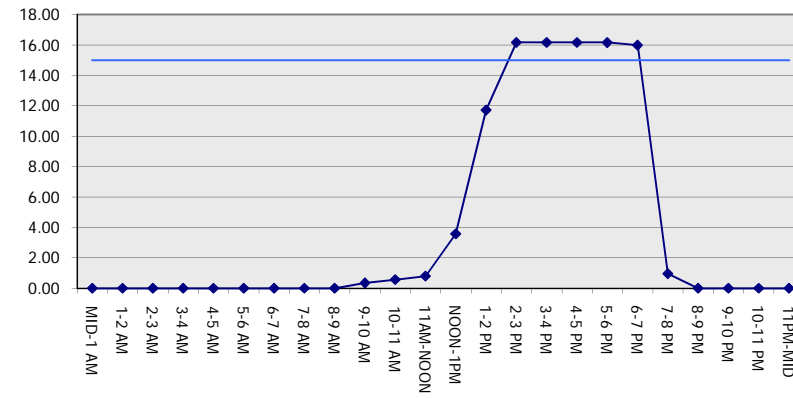
GRAPHICAL REPRESENTATION OF TRAFFIC MODEL INPUT AND OUTPUT

SUNDAY EASTBOUND DIRECTION

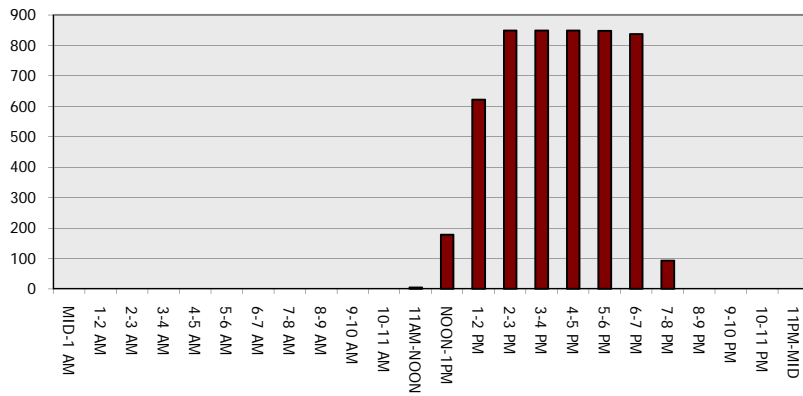
Main Route - Traffic Demand (Vehicles Per Hour)



Main Route Average Delay Per Vehicle (Minutes)



Main Route - Average Queue Length (Vehicles)



Main Route - Average Speed (MPH)

